

Self Priming Centrifugal Pump



**Models 81 1/2E3-X1.5 1P
and 81 1/2E3-X1.5 3P**



Size 1 1/2" x 1 1/2"

PUMP SPECIFICATIONS

- Size:** 1 1/2" x 1 1/2" (38 mm x 38 mm) NPT Female.
- Casing:** Gray Iron 30.
Maximum Operating Pressure 47 psi (324 kPa).*
- Semi-Open Type, Five Vane Impeller:** Copper Alloy C93700.
Handles 1/4" (6,4 mm) Spherical Solids.
- Impeller Shaft:** Stainless Steel 416 (Provided with Motor).
- Replaceable Vane Plate:** Gray Iron 30.
- Intermediate Bracket:** Gray Iron 30.
- Gaskets:** Vegetable Fiber.
- O-Rings:** Buna-N.
- Internal Wetted Hardware:** Brass and Standard Plated Steel.
- External Hardware:** Standard Plated Steel.
- Strainer:**

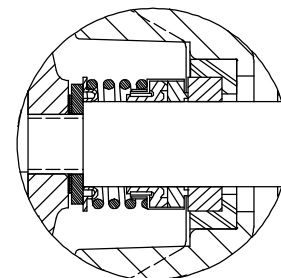
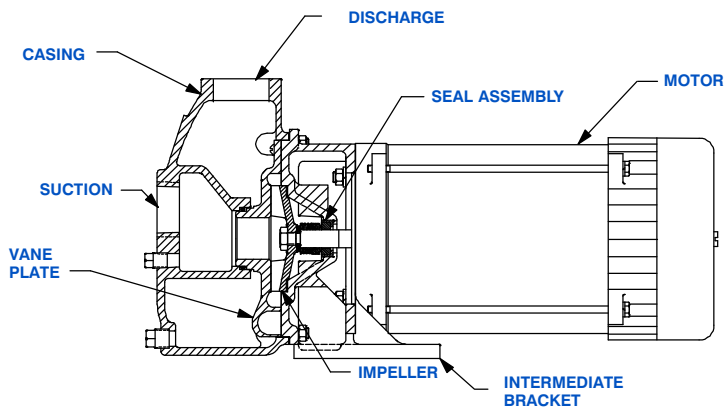


Optional Equipment: Consult Factory.

**Consult Factory for Applications Exceeding Maximum Pressure and/or Temperature Indicated.*

MOTOR SPECIFICATIONS

Type	Description	Frame Size	Hertz	Service Factor	Horsepower	RPM	Voltage
X	Single Phase. Totally Enclosed; Fan Cooled. Capacity Start/Induction Run. Thermal Overload Protection. Explosion Proof.	56	60	1.0	1.5	3450	115/230
X	Three Phase. Totally Enclosed; Fan Cooled. Induction Start; Induction Run. Thermal Overload Protection. Explosion Proof.						230/460



SEAL DETAIL: Type 21, Mechanical, Self-Lubricated. Carbon Rotating Face. Ni-Resist Stationary Face. Fluorocarbon Elastomers (DuPont Viton® or Equivalent). Stainless Steel 18-8 Cage and Spring. Maximum Temperature of Liquid Pumped, 160°F (71°C).*



GORMAN-RUPP PUMPS

www.grpumps.com

Specifications Subject to Change Without Notice

Printed in U.S.A.

Specification Data

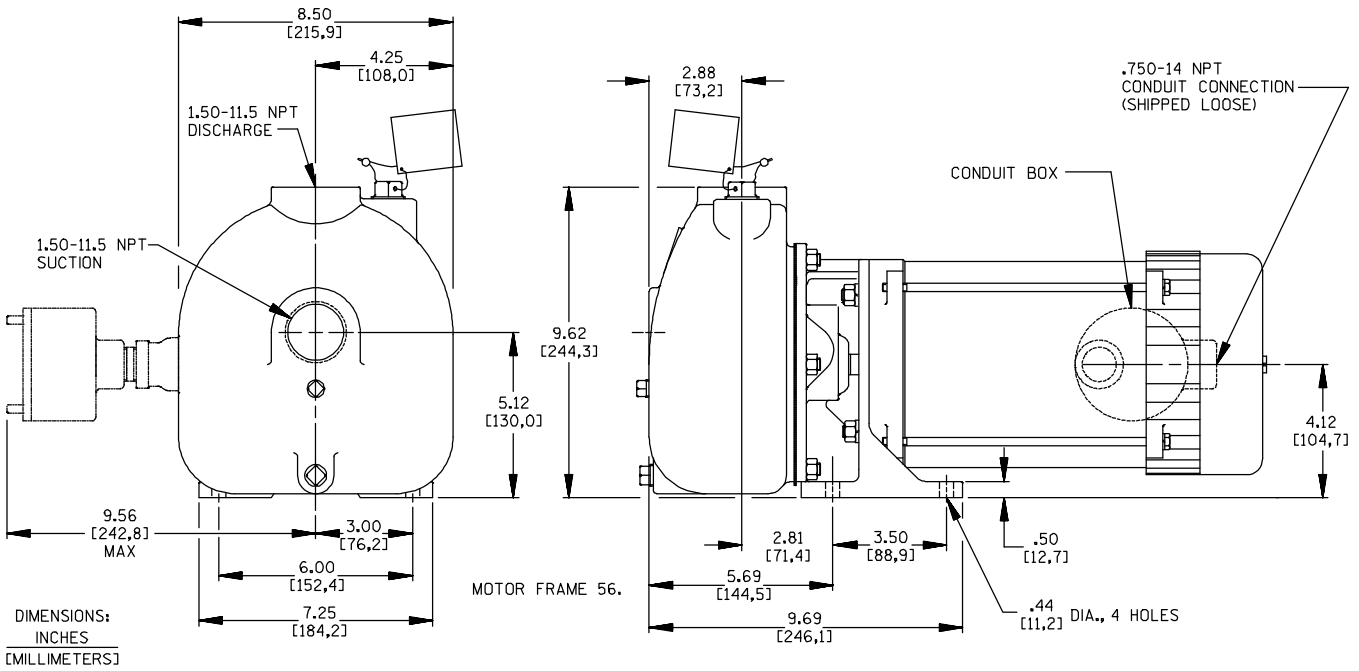
APPROXIMATE
DIMENSIONS and WEIGHTS

NET WEIGHT: 66 LBS. (29,9 KG.)

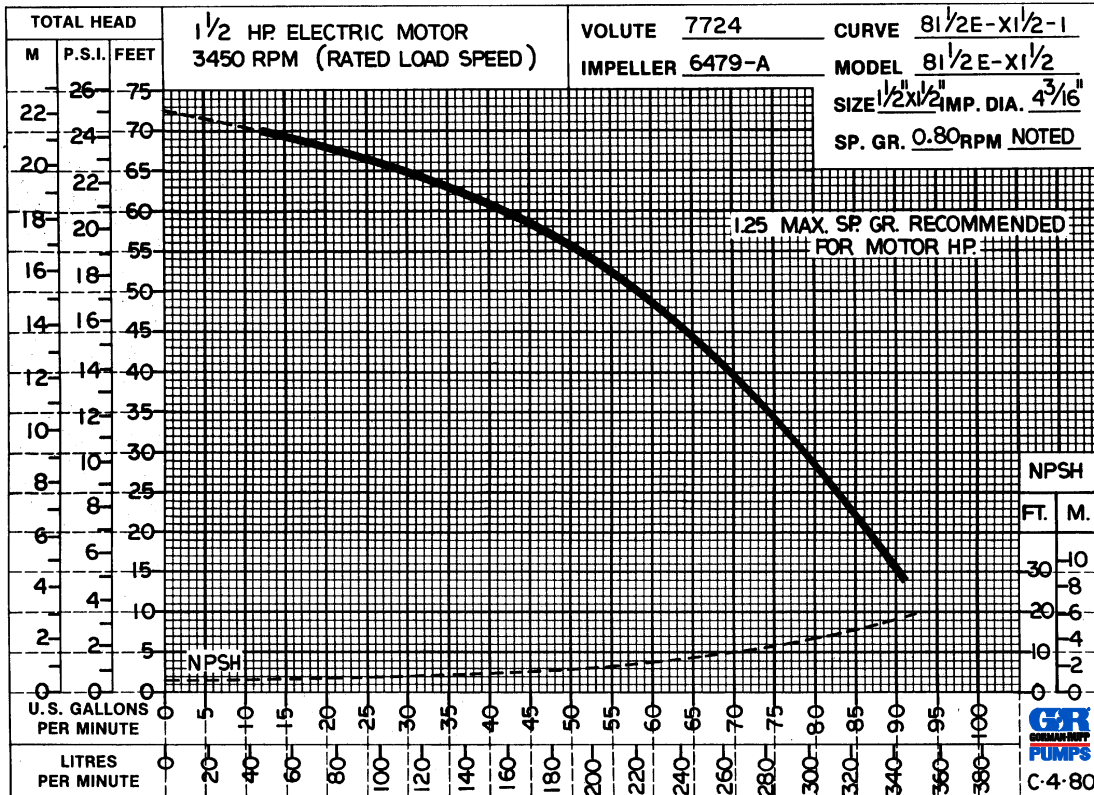
SHIPPING WEIGHT: 76 LBS. (32,2 KG.)

EXPORT CRATE: 3.5 CU. FT. (0,1 CU. M.)

SECTION 50, PAGE 742



DIMENSIONS:
INCHES
[MILLIMETERS]



60 HERTZ
Performance
Based on
Petroleum



GORMAN-RUPP PUMPS

www.grpumps.com

Specifications Subject to Change Without Notice

Printed in U.S.A.

