

Self Priming Centrifugal Pump



Model 81 1/4B3-E.33 1P

Size 1 1/4" x 1 1/4"



PUMP SPECIFICATIONS

Size: 1 1/4" x 1 1/4" (31,8 mm x 31,8 mm) NPT - Female.

Casing: Gray Iron 30.

Maximum Operating Pressure 26 psi (179 kPa).*

Semi-Open Type, Five Vane Impeller: Copper Alloy C83600.

Handles 5/16" (7,9 mm) Diameter Spherical Solids.

Impeller Shaft: Stainless Steel 416 (Provided with Motor).

Suction Head: Gray Iron 30.

Suction Flange: Gray Iron 30.

Flap Valve: Brass; Buna-N.

Gaskets: Cork.

8 Ft. (2,4 M) Electric Power Cord.

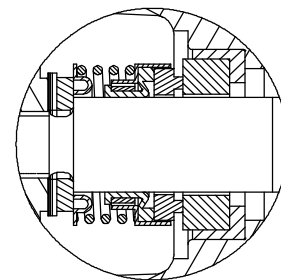
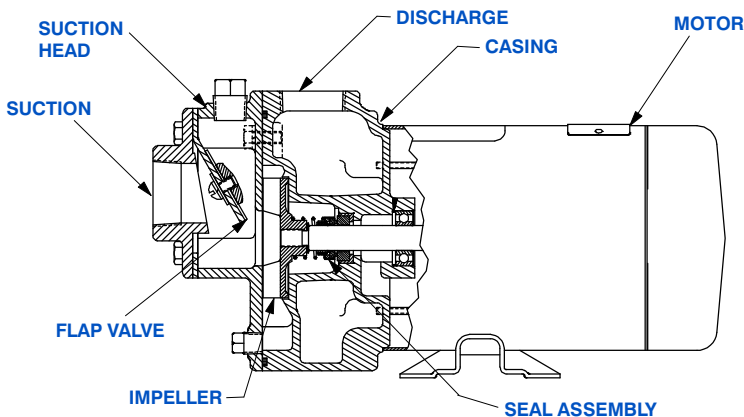
Optional Equipment: Consult Factory.



WARNING!
Do not use in explosive atmosphere or for pumping volatile flammable liquids.

MOTOR SPECIFICATIONS

Type	Description	Frame Size	Hertz	Horse power	Service Factor	RPM	Voltage
E	Single Phase. Open Drip Proof. Capacitor Start. Auto Reset Thermostat. Self-Lubricated, Shielded Ball, Radial/Thrust Bearings.	56Y	60	0.33	1.0	3450	115/230



SEAL DETAIL

Type 21, Mechanical, Self-Lubricated. Carbon Rotating Face. Ni-Resist Stationary Face. Fluorocarbon Elastomers (DuPont Viton® or Equivalent). Stainless Steel 18-8 Cage and Spring. Maximum Temperature of Liquid Pumped, 160°F (71°C).*

*Consult Factory for Applications Exceeding Maximum Pressure and/or Temperature Indicated.



GORMAN-RUPP PUMPS

www.grpumps.com

Specifications Subject to Change Without Notice

Printed in U.S.A.

Specification Data

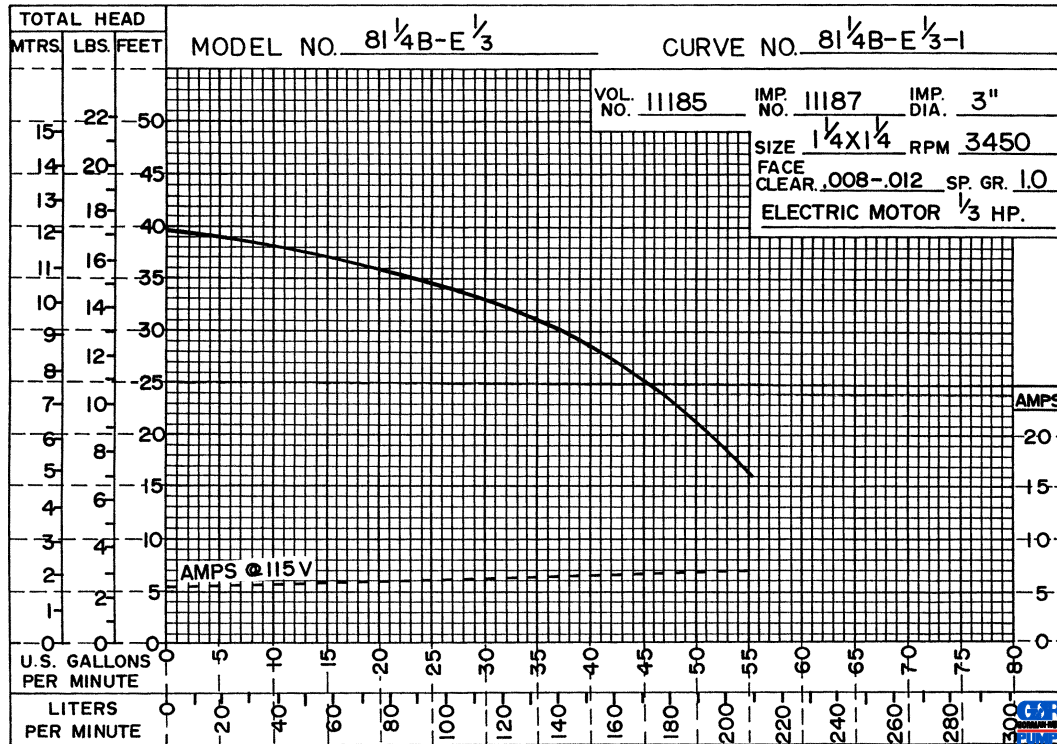
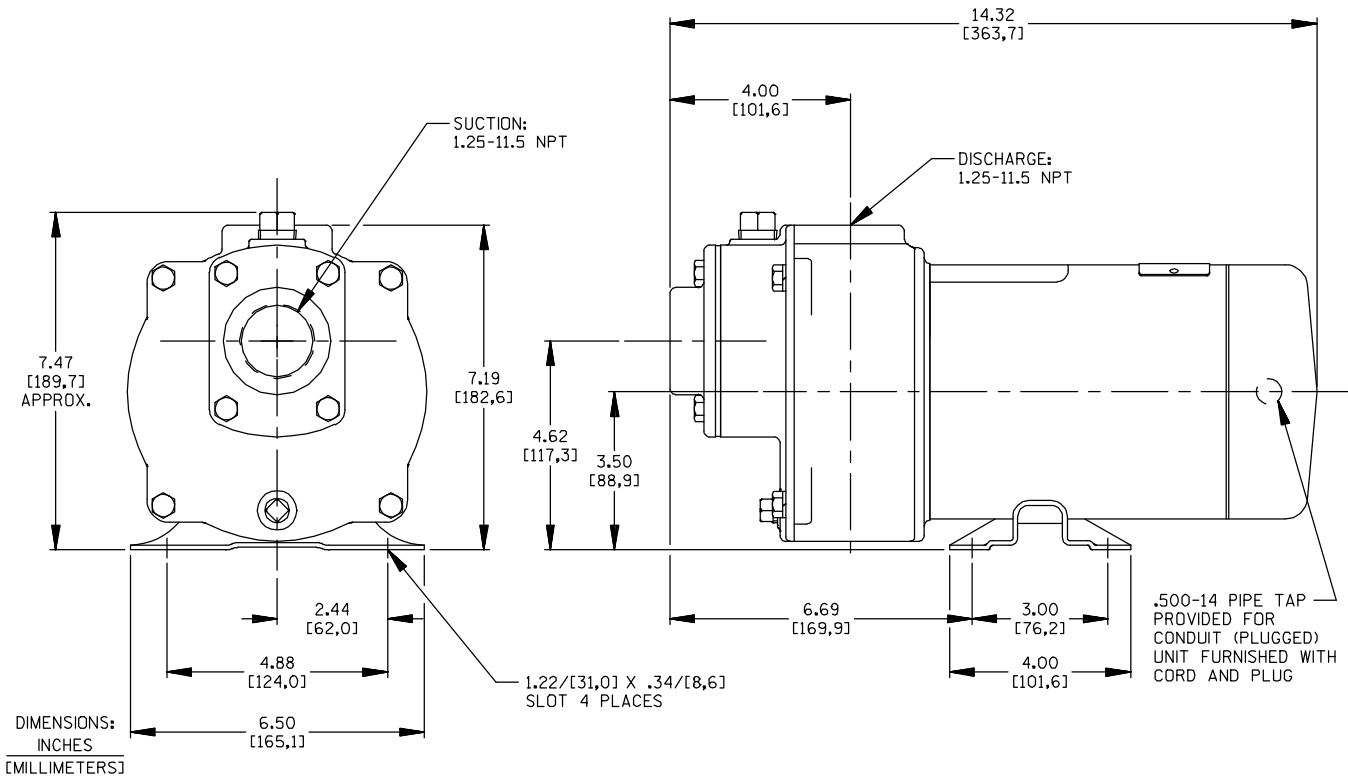
SECTION 50, PAGE 450

APPROXIMATE DIMENSIONS and WEIGHTS

NET WEIGHT (w/o Float Switch): 34 LBS. (15,4 KG.)

SHIPPING WEIGHT: 42 LBS.(19,1 KG.)

EXPORT CRATE: 1.1 CU. FT. (0,03 CU. M.)



60 HERTZ
Performance
Based on
Water

T-11-18-76-REV.



GORMAN-RUPP PUMPS

www.grpumps.com

Specifications Subject to Change Without Notice

Printed in U.S.A.