

**Priming Assisted Centrifugal Pump
w/Autostart**

Model PA4A60C-ZPP428-ESP

Size 4" x 4"



RELIAPRIME
BACK-UP SYSTEM

Total Head		Capacity of Pump in U.S. Gallons per Minute (GPM) at Continuous Performance				
P.S.I.	Feet					
52.5	121	210	210	210	210	210
47.7	110	400	475	475	475	475
43.4	100	419	565	672	715	715
39.0	90	421	572	690	804	865
34.7	80	427	575	704	820	891
30.3	70	430	580	711	830	902
26.0	60	435	584	719	838	912
21.7	50	440	590	721	841	922
17.3	40	444	593	727	848	930
13.0	30	450	600	730	852	935
Suction Lift		25'	20'	15'	10'	5'

PUMP SPECIFICATIONS

Size: 4" x 4" (102 mm x 102 mm) Flanged.

Casing: Gray Iron 30.

Maximum Operating Pressure 88 psi (607 kPa).*

Semi-Open Type, Two Vane Impeller: Ductile Iron 65-45-12.

Handles 3" (76.2 mm) Diameter Spherical Solids.

Impeller Shaft: Stainless Steel 17-4 PH.

Suction Flange/Flap Valve Seat: Gray Iron 30.

Bearing Housing: Gray Iron 30.

Seal Plate: Gray Iron 30.

Seal: Cartridge Type, Mechanical, Oil-Lubricated, Double Floating, Self-Aligning. Silicon Carbide Rotating and Stationary Faces. Stainless Steel 316 Stationary Seat. Fluorocarbon Elastomers (DuPont Viton® or Equivalent). Stainless Steel 18-8 Cage and Spring. Maximum Temperature of Liquid Pumped, 160°F (71°C).*

Shaft Sleeve: Stainless Steel 17-4 PH.

Radial Bearing: Open Single Row Ball.

Thrust Bearing: Open Double Row Ball.

Bearing and Seal Cavity Lubrication: SAE 30 Non-Detergent Oil.

Flanges: Gray Iron 30.

Gaskets: Buna-N, Compressed Synthetic Fibers, Vegetable Fiber, PTFE, Cork and Rubber.

O-Rings: Buna-N.

Hardware: Standard Plated Steel.

Brass Pressure Relief Valve.

Bearing and Seal Cavity Oil Level Sight Gauges.

*Consult Factory for Applications Exceeding Maximum Pressure and/or Temperature Indicated.

Standard Equipment: Natural or LP Gas Pressure Regulator. Solar Battery Maintenance Kit. Soundproof (EPA Average 63 dBA at 23 feet [7 meters] Under Load). Lightweight Aluminum Enclosure - Removable for Maintenance of Pump or Engine - w/Padlockable Door Panels. Spill Containment Base w/Integral Drains and Fork Lift Pockets. Electronic Suction Vacuum and Discharge Pressure Gauge Kit. Hoisting Bail. Skid Base. Strainer. Submersible Transducer Liquid Level Sensor.**

Optional Equipment: Battery. LP Gas Pressure Regulator.

**100 Ft. (30 m) Standard Length; Dual Switches Available From the Factory.



ENGINE SPECIFICATIONS

Model: Zenith Model ZPP428. EPA/CARB Certified.

Type: Four Cylinder Power Unit Dual Fuel (Natural Gas and Vapor LP Gas).

Displacement 171 Cu. In. (2.8 Liters).

Lubrication: Forced Circulation.

Air Cleaner: Dry Type.

Fuel Consumption at Continuous Performance:

Natural Gas: 614 CFH (17387 L/hr) @ 100% Volume.

LP Gas: 671,159 BTU/hr @ 100% Volume.

Starter: 12V Electric.

Standard Features: Muffler w/Weather Cap.

Engine Control Features: Throttle Control, Tachometer, Coolant Temperature, Oil Pressure, Voltage and Overstart Indicators/Shutdowns. Dual Fuel Toggle Switch. Manual/Stop/Auto Keyswitch. Audible Startup Warning Delay. Suction Vacuum/Discharge Pressure Displays.

ZENITH PUBLISHED PERFORMANCE:

Maximum Continuous B.H.P.

64 (47.7 kW) @ 3000 RPM



GORMAN-RUPP PUMPS

www.grpumps.com

Specifications Subject to Change Without Notice

Printed in U.S.A.

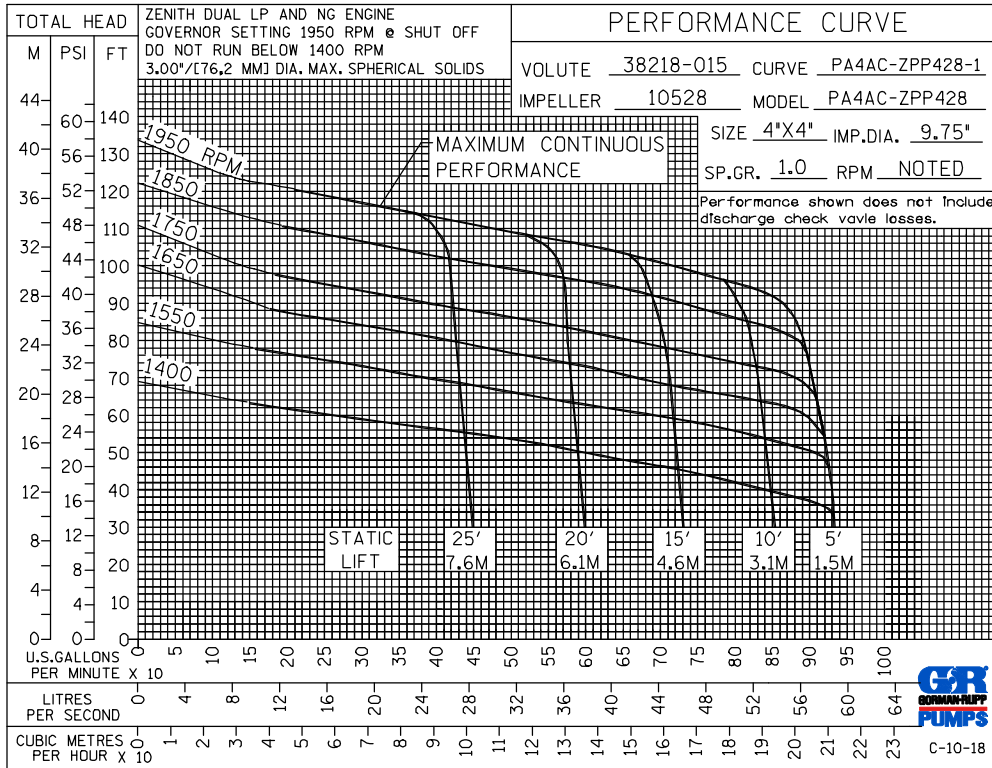
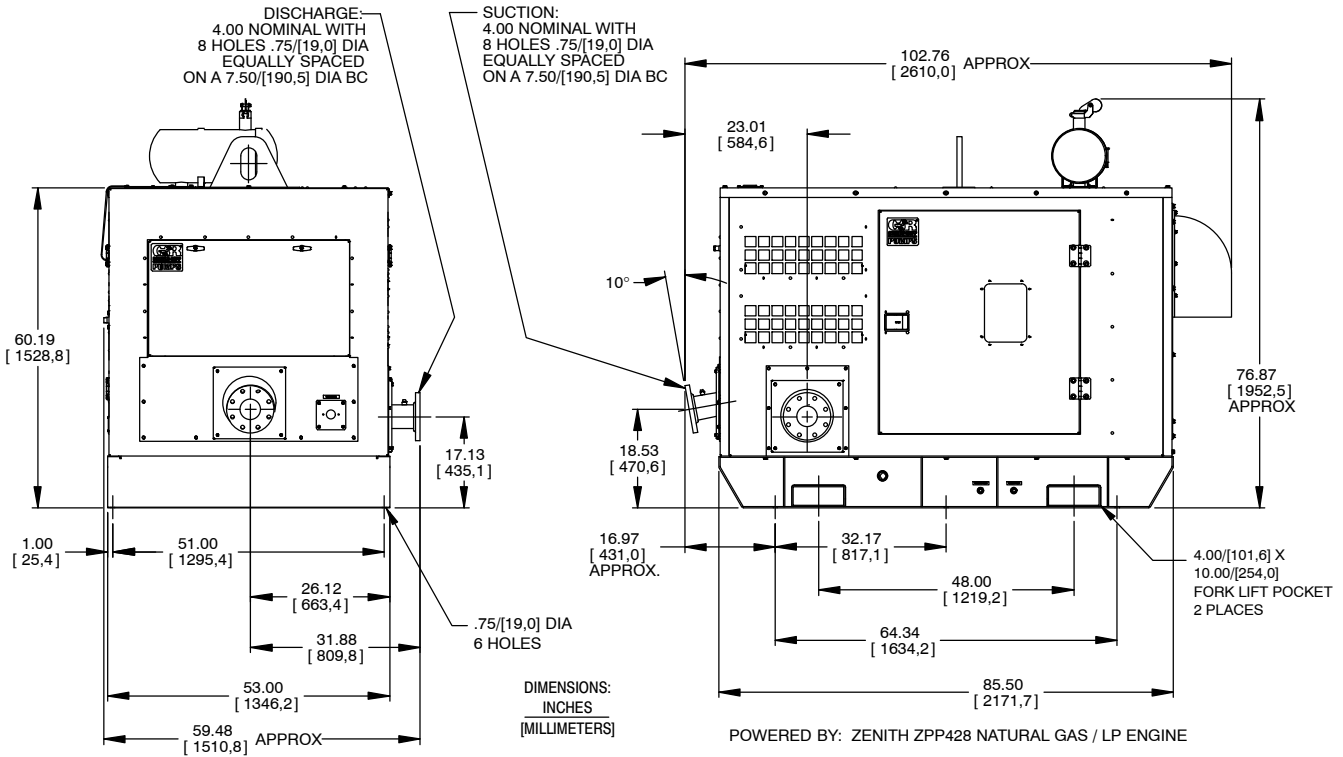
Specification Data

SECTION 48, PAGE 85

APPROXIMATE DIMENSIONS and WEIGHTS

NET WEIGHT:
SHIPPING WEIGHT:
EXPORT CRATE SIZE:

2990 LBS. (1356 KG.)
3200 LBS. (1452 KG.)
321 CU. FT. (9,1 CU. M.)



GORMAN-RUPP PUMPS

www.grpumps.com

Specifications Subject to Change Without Notice

Printed in U.S.A.