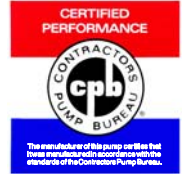


Diesel Engine Driven

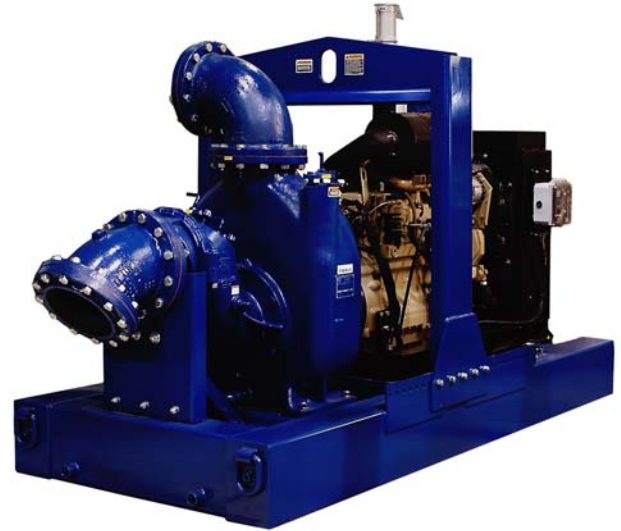


**Self Priming Centrifugal Pump  
w/Autostart  
Model T10A65S-6068T  
Size 10" x 10"**



200 M

Total Head		Capacity of Pump in U.S. Gallons per Minute (GPM) at Continuous Performance			
P.S.I.	Feet				
66.8	154	790	790	790	790
60.7	140	1450	1450	1450	1450
52.0	120	1800	2325	2550	2550
43.4	100	1870	2420	2880	3200
34.7	80	1930	2500	2900	3325
26.0	60	1950	2575	3025	3400
17.3	40	2050	2650	3100	3450
<b>Suction Lift</b>		<b>25'</b>	<b>20'</b>	<b>15'</b>	<b>10'</b>



**PUMP SPECIFICATIONS**

**Size:** 10" x 10" (254 mm x 254 mm) Flanged.  
**Casing:** Stainless Steel CD4MCu.  
**Maximum Operating Pressure** 114 psi (786 kPa).  
**Semi-Open Type, Two Vane Impeller:** Stainless Steel CD4MCu.  
 Handles 3" (76,2 mm) Diameter Spherical Solids.  
**Impeller Shaft:** Stainless Steel 17-4 PH.  
**Replaceable Wear Plate:** Stainless Steel CD4MCu.  
**Seal Plate:** Stainless Steel CD4MCu.  
**Removable Clean-out Cover Plate:** Stainless Steel CD4MCu; 9 lbs. (4 kg).  
**Flap Valve:** Fluorocarbon (DuPont Viton® or Equivalent) w/Stainless Steel Reinforcing.  
**Shaft Sleeve:** Stainless Steel 17-4PH.  
**Seal:** Cartridge Type, Mechanical, Oil-Lubricated, Double Floating, Self-Aligning. Silicon Carbide Rotating and Stationary Faces. Stainless Steel 316 Stationary Seat. Fluorocarbon Elastomers (DuPont Viton® or Equivalent). Stainless Steel 18-8 Cage and Spring.  
**Maximum Temperature of Liquid Pumped** 160°F (71 °C).  
**Seal Plate:** Stainless Steel CD4MCu.  
**Radial and Thrust Bearings:** Open Double Row Ball.  
**Bearing Housing:** Stainless Steel CD4MCu.  
**Bearing and Seal Cavity Lubrication:** SAE 30 Non-Detergent Oil.  
**Suction Flange:** Stainless Steel CD4MCu.  
**Suction Head:** Stainless Steel CD4MCu.  
**Gaskets:** Fluorocarbon (DuPont Viton® or Equivalent), and PTFE.  
**O-Rings:** Fluorocarbon (DuPont Viton® or Equivalent).  
**Hardware:** Stainless Steel 316.  
**Pressure Relief Valve:** Stainless Steel 316.  
**Bearing and Seal Cavity Oil Level Sight Gauges.**  
*\*Consult Factory for Applications Exceeding Maximum Pressure and/or Temperature Indicated.*

**WARNING!**  
Do not use in explosive atmosphere or for pumping volatile flammable liquids.

**ENGINE SPECIFICATIONS**

**Model:** John Deere 6068T "Power Tech".  
**EPA Tier:** Interim Tier 3.  
**Type:** Six Cylinder, Four Cycle, Water Cooled Diesel Engine.  
**Displacement:** 414 Cu. In. (6,8 Liters).  
**Lubrication:** Forced Circulation.  
**Air Cleaner:** Dry Type.  
**Fuel Tank:** 130 U.S. Gallons (492 Liters).  
**Full Load Operating Time:** 29.6 Hrs.  
**Starter:** 12V Electric.  
**Standard Features:** Muffler w/Weather Cap.  
**Optional:** Electronic Fuel Level Sensor.  
**Engine Control Features:** Padlockable Box with Throttle Control, Tachometer, Coolant Temperature, Oil Pressure, Voltage and Overstart Indicators/Shutdowns. Manual/Stop/Auto Key-switch. Audible Startup Warning Delay. Fuel Level Display/Alarm/Shutdown (For Use With Optional Fuel Level Sensor).

**JOHN DEERE PUBLISHED PERFORMANCE:**

Maximum Gross Continuous  
B.H.P. 153 (114 kW) @ 2500 RPM

**Standard Equipment:** Hoisting Bail. 90° Discharge Elbow. Strainer.  
**Single Ball Type Float Switch.\*\***  
**\*\*50 Ft. (15 m) Standard Length; Dual Switches and Alternate Cable Lengths Available From the Factory.**  
**Optional Equipment:** Battery. High Speed (55 MPH/89 KM/H) Tandem Axle Pneumatic-Tired Wheel Kit. Tandem Axle Over-the-Road Trailer (Meets DOT Requirements) Available w/Either Electric or Hydraulic Surge Brakes, Running Lights, Jack Stands and Safety Cables/Chains. Full Feature Control Panel For Use w/Submersible Transducer Liquid Level Sensor (50 Ft. [15 M] Cable Standard, Alternate Lengths Available).



**GORMAN-RUPP PUMPS**

www.grpumps.com

Specifications Subject to Change Without Notice

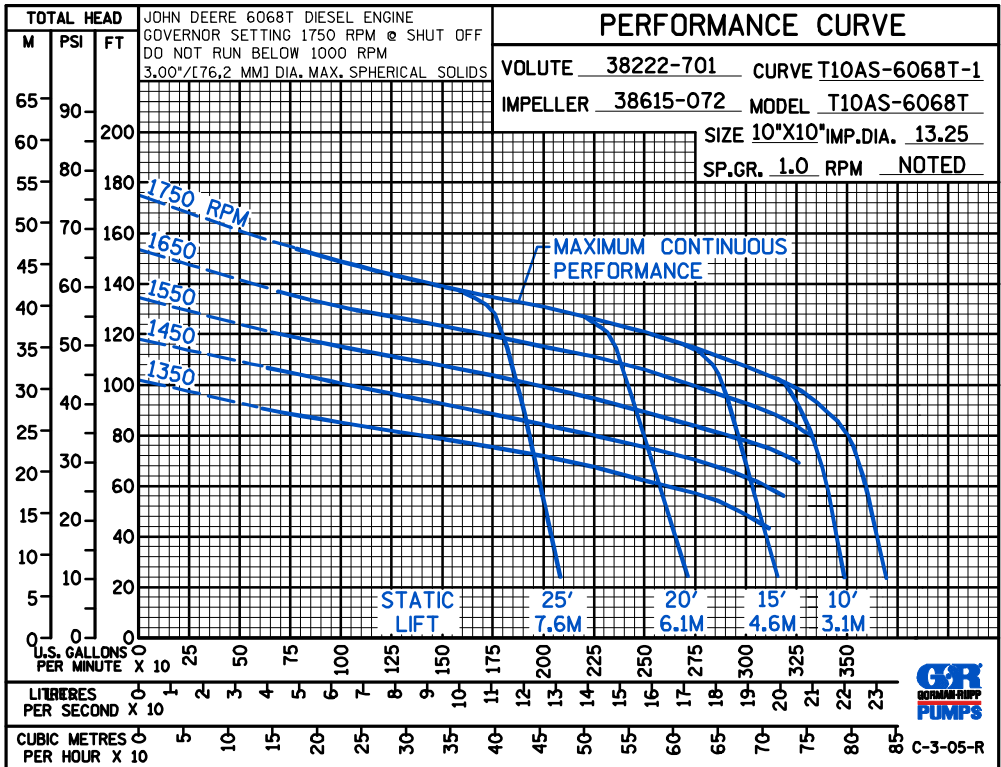
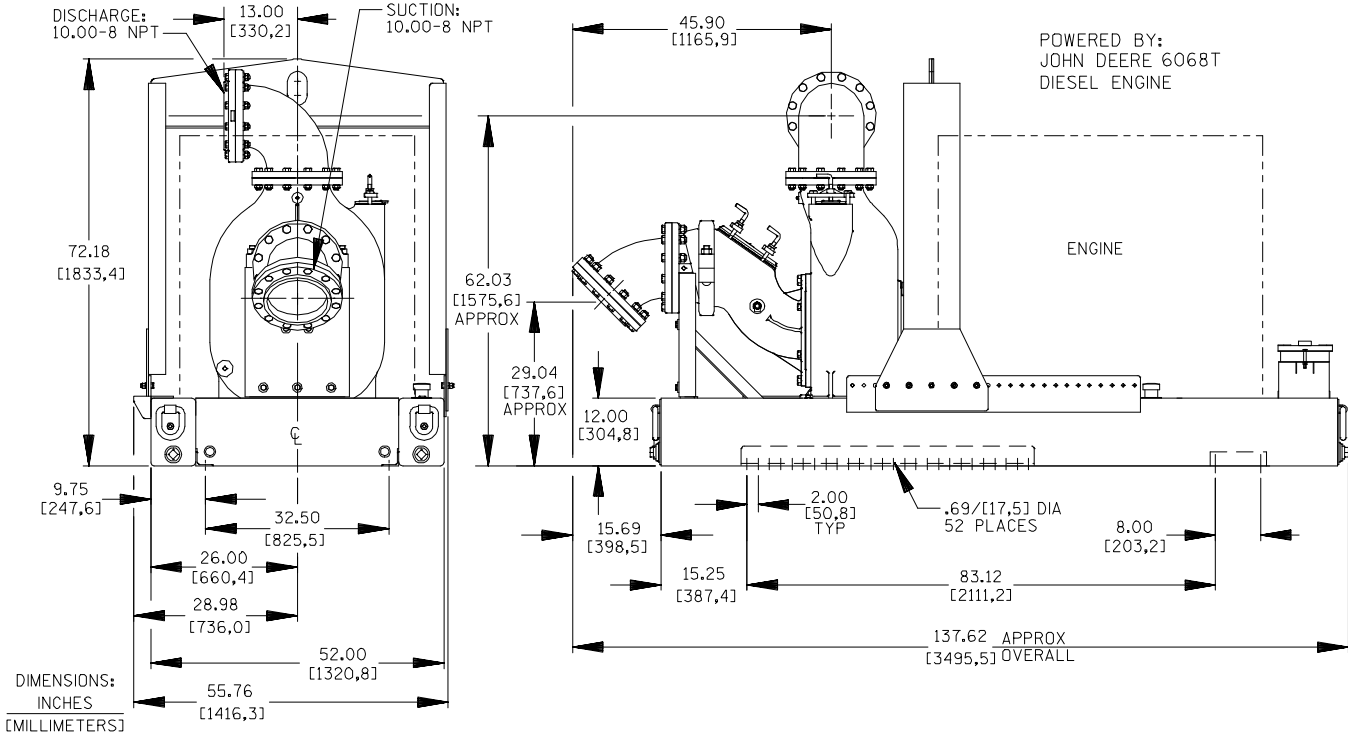
Printed in U.S.A.

# Specification Data

SECTION 45, PAGE 1705

APPROXIMATE DIMENSIONS and WEIGHTS

	<b>SKID BASE</b>	<b>2-WHEEL</b>
<b>NET WEIGHT:</b>	5815 LBS. (2638 KG.)	6150 LBS. (2790 KG.)
<b>SHIPPING WEIGHT:</b>	6165 LBS. (2796 KG.)	6150 LBS. (2790 KG.)
<b>EXPORT CRATE SIZE:</b>	408 CU. FT. (11,6 CU. M.)	



GORMAN-RUPP PUMPS

www.grpumps.com

Specifications Subject to Change Without Notice

Printed in U.S.A.