



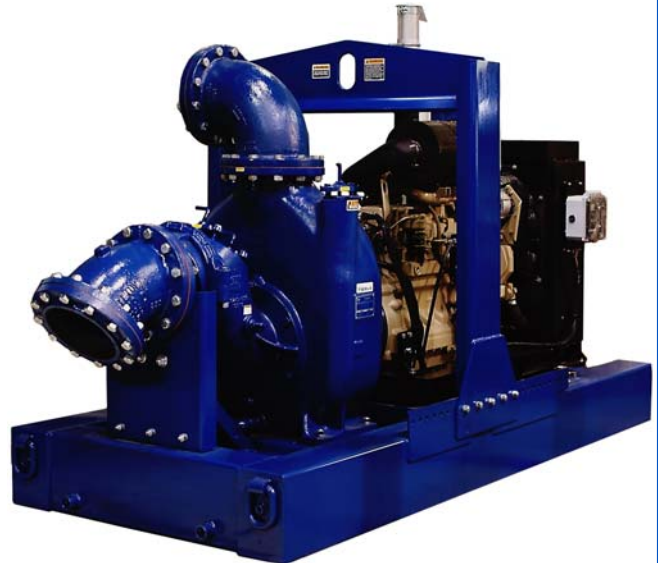
# Self Priming Centrifugal Pump w/Autostart

**Model T10A60S-6068T**  
**Size 10" x 10"**



200 M

Total Head		Capacity of Pump in U.S. Gallons per Minute (GPM) at Continuous Performance			
P.S.I.	Feet				
66.8	154	790	790	790	790
60.7	140	1450	1450	1450	1450
52.0	120	1800	2325	2550	2550
43.4	100	1870	2420	2880	3200
34.7	80	1930	2500	2900	3325
26.0	60	1950	2575	3025	3400
17.3	40	2050	2650	3100	3450
<b>Suction Lift</b>		<b>25'</b>	<b>20'</b>	<b>15'</b>	<b>10'</b>



**PUMP SPECIFICATIONS**

**Size:** 10" x 10" (254 mm x 254 mm) NPT - Female.  
**Casing:** Gray Iron 30.  
 Maximum Operating Pressure 114 psi (786 kPa). \*  
**Semi-Open Type, Two Vane Impeller:** Ductile Iron 65-45-12.  
 Handles 3" (76,2 mm) Diameter Spherical Solids.  
**Impeller Shaft:** Stainless Steel 17-4 PH.  
**Replaceable Front Wear Plate:** Ductile Iron 80-55-06.  
**Replaceable Rear Wear Plate:** Carbon Steel M1026.  
**Removable Clean-Out Cover Plate:** Gray Iron 30; 9 lbs. (4 kg).  
**Flap Valve:** Neoprene w/Steel Reinforcing.  
**Seal Plate:** Gray Iron 30.  
**Shaft Sleeve:** Alloy Steel 4130.  
**Seal:** Cartridge Type, Mechanical, Oil-Lubricated, Double Floating, Self-Aligning. Silicon Carbide Rotating and Stationary Faces. Stainless Steel 316 Stationary Seat. Fluorocarbon Elastomers (DuPont Viton® or Equivalent). Stainless Steel 18-8 Cage and Spring. Maximum Temperature of Liquid Pumped 160°F (71°C). \*  
**Bearing Housing:** Gray Iron 30.  
**Radial/Thrust Bearings:** Open Double Ball.  
**Bearing and Seal Cavity Lubrication:** SAE 30 Non-Detergent Oil.  
**Flanges:** Gray Iron 30.  
**Suction Head:** Gray Iron 30.  
**Gaskets:** Buna-N, PTFE, Cork, and Rubber.  
**O-Rings:** Buna-N.  
**Hardware:** Standard Plated Steel.  
**Brass Pressure Relief Valve.**  
**Bearing and Seal Cavity Oil Level Sight Gauges.**  
**Standard Equipment:** Hoisting Bail. 90° Discharge Elbow. Strainer. Single Ball Type Float Switch. \*\*  
**\*\*50 Ft. (15 m) Standard Length; Dual Switches and Alternate Cable Lengths Available From the Factory.**  
**Optional Equipment:** Battery. G-R Hard Iron Impeller, Seal Plate and Wear Plate. High Speed (55 MPH/89 KM/H) Single Axle Pneumatic-Tired Wheel Kit w/wo DOT-Approved Lights and Electric Brakes. Tandem Axle Over-the-Road Trailer (Meets DOT Requirements) Available w/Either Electric or Hydraulic Surge Brakes, Running Lights, Jack Stands and Safety Cables/Chains. EPS w/Submersible Transducer Liquid Level Sensor (50 Ft. [15,2 M] Cable Standard, Alternate Lengths Available).  
**\*Consult Factory for Applications Exceeding Maximum Pressure and/or Temperature Indicated.**

**WARNING!**  
Do not use in explosive atmosphere or for pumping volatile flammable liquids.

**ENGINE SPECIFICATIONS**

**Model:** John Deere 6068T "Power Tech".  
**Type:** Six Cylinder, Four Cycle, Water Cooled Diesel Engine.  
**Displacement:** 414 Cu. In. (6,8 Liters).  
**Governor:** Mechanical.  
**Lubrication:** Forced Circulation.  
**Air Cleaner:** Oil Bath.  
**Oil Reservoir:** 19 U.S. Qts. (18,0 Liters) Dry; 18 U.S. Qts. (17,0 Liters) Refill.  
**Fuel Tank:** 130 U.S. Gallons (492 Liters).  
**Full Load Operating Time:** 29.6 Hrs.  
**Starter:** 12 Volt Electric.  
**Standard Features:** Low Oil Pressure, High Coolant Temperature, Start Failure and Engine Over-Speed Safety Shut Down Switches. Fuel Level Gauge. Auto-start Instrument Panel Display Includes: RPM, Engine Hours, Coolant Temperature, Oil Pressure and Battery Voltage. Manual/Off/Auto Key Switch, Audible Startup Warning Delay, and Throttle Control. Muffler w/Guard and Weather Cap.

**JOHN DEERE PUBLISHED PERFORMANCE:**  
Maximum Continuous B.H.P. 153 (114 kW) @ 2500 RPM



**THE GORMAN-RUPP COMPANY • MANSFIELD, OHIO**

GORMAN-RUPP OF CANADA LIMITED • ST. THOMAS, ONTARIO, CANADA

www.grpumps.com

Specifications Subject to Change Without Notice

Printed in U.S.A.

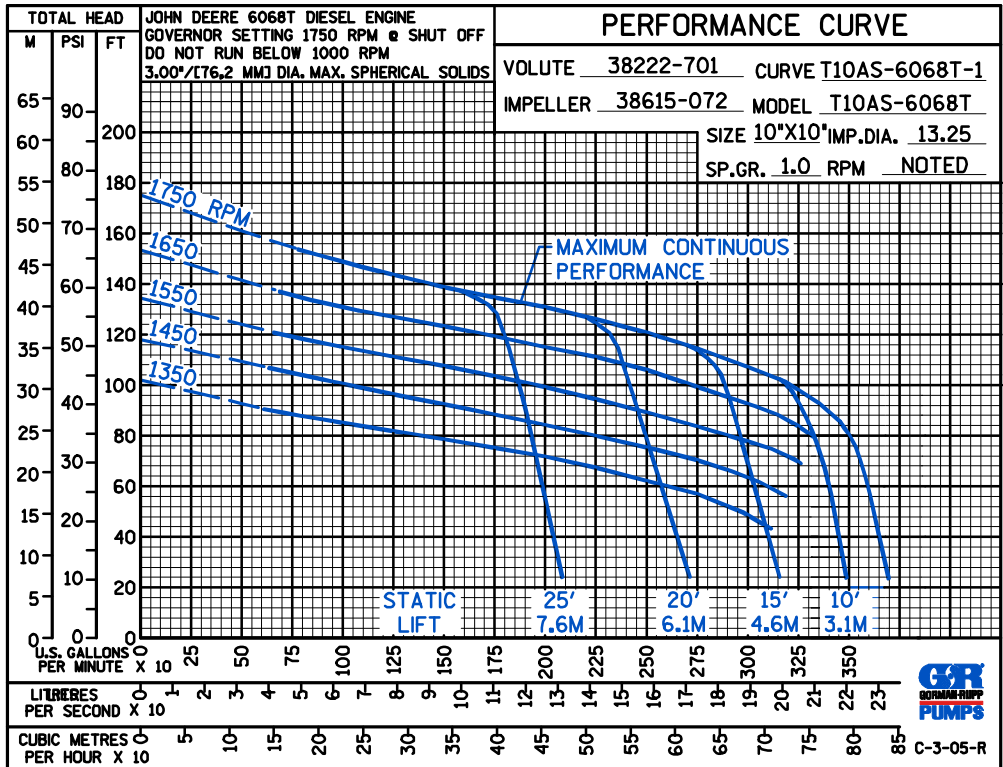
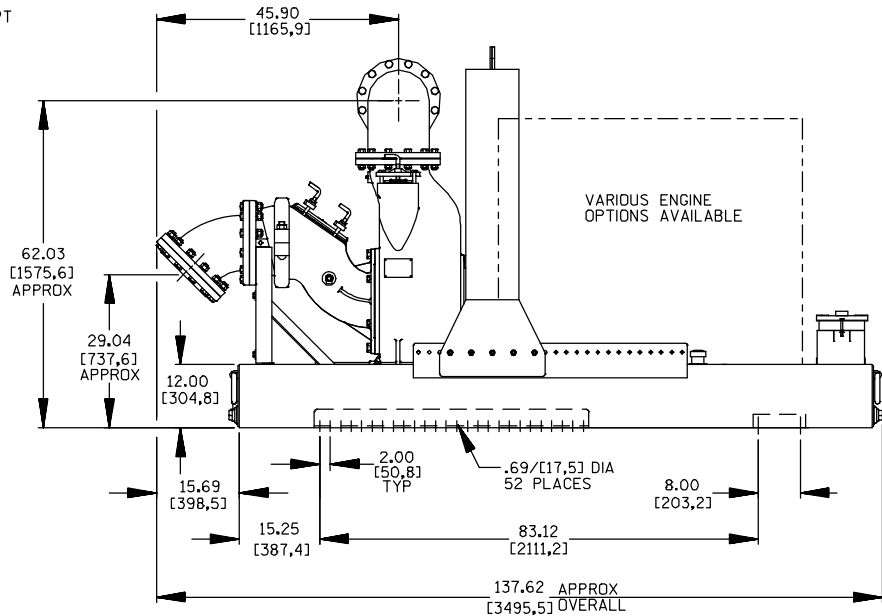
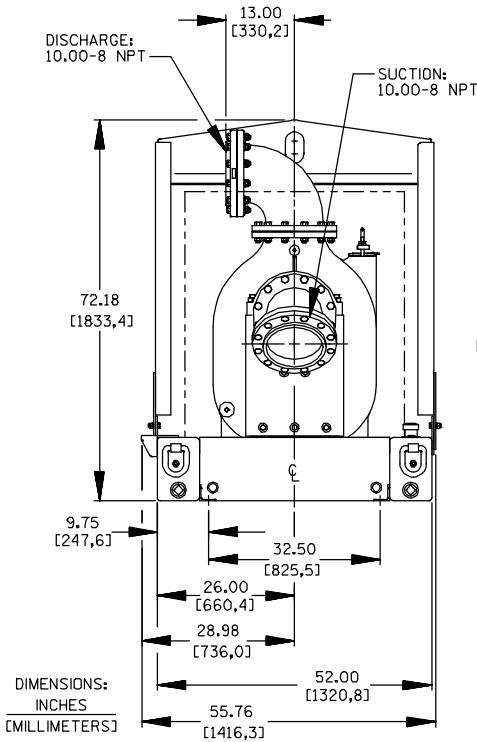
# Specification Data

SECTION 45, PAGE 1700

APPROXIMATE DIMENSIONS and WEIGHTS

**SKID BASE**  
**NET WEIGHT:** 5750 LBS. ( KG.)  
**SHIPPING WEIGHT:** 6100 LBS. (2771,4 KG.)  
**EXPORT CRATE SIZE:** 395 CU. FT. (11,2 CU. M.)

**2-WHEEL**  
**6085 LBS. (2760 KG.)**  
**6085 LBS. (2760 KG.)**



THE GORMAN-RUPP COMPANY • MANSFIELD, OHIO

GORMAN-RUPP OF CANADA LIMITED • ST. THOMAS, ONTARIO, CANADA

Specifications Subject to Change Without Notice

Printed in U.S.A.