

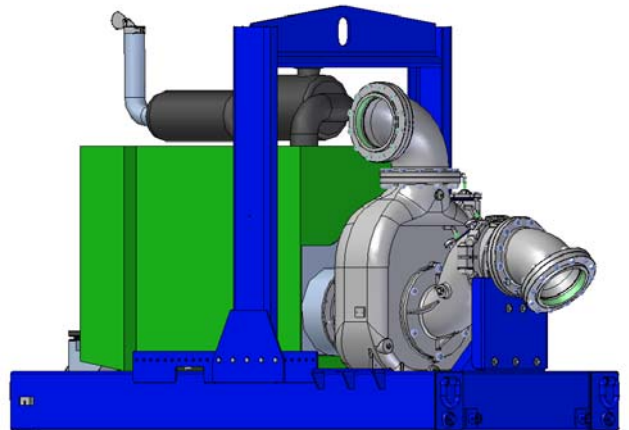


# Self Priming Centrifugal Pump w/Autostart

**Model T10A60S-6068H**  
**Size 10" x 10"**



Total Head		Capacity of Pump in U.S. Gallons per Minute (GPM) at Continuous Performance			
P.S.I.	Feet				
66.8	154	790	790	790	790
60.7	140	1450	1450	1450	1450
52.0	120	1800	2325	2550	2550
43.4	100	1870	2420	2880	3200
34.7	80	1930	2500	2900	3325
26.0	60	1950	2575	3025	3400
17.3	40	2050	2650	3100	3450
<b>Suction Lift</b>		<b>25'</b>	<b>20'</b>	<b>15'</b>	<b>10'</b>



**PUMP SPECIFICATIONS**

**Size:** 10" x 10" (254 mm x 254 mm) NPT.  
**Casing:** Gray Iron 30.  
 Maximum Operating Pressure 114 psi (786 kPa).  
**Semi-Open Type, Two Vane Impeller:** Ductile Iron 65-45-12.  
 Handles 3" (76,2 mm) Diameter Spherical Solids.  
**Impeller Shaft:** Stainless Steel 17-4 PH.  
**Replaceable Front Wear Plate:** Ductile Iron 80-55-06.  
**Replaceable Rear Wear Plate:** Carbon Steel ASTM A36.  
**Removable Clean-Out Cover Plate:** Gray Iron 30; 9 lbs. (4 kg).  
**Flap Valve:** Neoprene w/Steel Reinforcing.  
**Seal Plate:** Gray Iron 30.  
**Shaft Sleeve:** Alloy Steel 4130.  
**Seal:** Cartridge Type, Mechanical, Oil-Lubricated, Double Floating, Self-Aligning. Silicon Carbide Rotating and Stationary Faces. Stainless Steel 316 Stationary Seat. Fluorocarbon Elastomers (DuPont Viton® or Equivalent). Stainless Steel 316 Cage and Spring. Maximum Temperature of Liquid Pumped 160°F (71°C).  
**Bearing Housing:** Gray Iron 30.  
**Radial/Thrust Bearings:** Open Double Ball.  
**Bearing and Seal Cavity Lubrication:** SAE 30 Non-Detergent Oil.  
**Flanges:** Gray Iron 30.  
**Suction Head:** Gray Iron 30.  
**Gaskets:** Buna-N, PTFE, Cork, and Rubber.  
**O-Rings:** Buna-N.  
**Hardware:** Standard Plated Steel.  
**Brass Pressure Relief Valve.**  
**Bearing and Seal Cavity Oil Level Sight Gauges.**  
*\*Consult Factory for Applications Exceeding Maximum Pressure and/or Temperature Indicated.*  
**Standard Equipment:** Hoisting Bail. 90° Discharge Elbow. Strainer. Combination Skid Base w/Fuel Tank. **Single Ball Type Float Switch.**  
*\*\*50 Ft. (15 m) Standard Length; Dual Switches and Alternate Cable Lengths Available From the Factory.*  
**Optional Equipment:** Battery. G-R Hard Iron Impeller, Seal Plate and Wear Plate. High Speed (55 MPH/89 KM/H) Single Axle Pneumatic-Tired Wheel Kit w/w/o DOT-Approved Lights and Electric Brakes. **Tandem Axle Over-the-Road Trailer** (Meets DOT Requirements) Available w/Either Electric or Hydraulic Surge Brakes, Running Lights, Jack Stands and Safety Cables/Chains. **Full Feature Control Panel** For Use w/Submersible Transducer Liquid Level Sensor (50 Ft. [15 M] Cable Standard, Alternate Lengths Available).



**ENGINE SPECIFICATIONS**

**Model:** John Deere 6068H285.  
**EPA Tier:** Tier 3.  
**Type:** Six Cylinder, Four Cycle, Charge Air Cooled, Enclosed, Diesel Engine.  
**Displacement:** 415 Cu. In. (6,8 Liters).  
**Lubrication:** Forced Circulation.  
**Air Cleaner:** Dry Type.  
**Fuel Tank:** 130 U.S. Gallons (492 Liters).  
**Full Load Operating Time:** 16 Hrs.  
**Starter:** 12V Electric.  
**Standard Features:** Muffler w/Weather Cap.  
**Optional:** Electronic Fuel Level Sensor.  
**Engine Control Features:** Padlockable Box with Throttle Control, Tachometer, Coolant Temperature, Oil Pressure, Voltage and Overstart Indicators/Shut-downs. Manual/Stop/Auto Keyswitch. Audible Startup Warning Delay. Fuel Level Display/Alarm/Shutdown (For Use With Optional Fuel Level Sensor).

**JOHN DEERE PUBLISHED PERFORMANCE:**  
 Maximum Gross BHP (Heavy Duty)  
 173 (129 kW) @ 2400 RPM



**GORMAN-RUPP PUMPS**

www.grpumps.com

Specifications Subject to Change Without Notice

Printed in U.S.A.

**Specification Data**

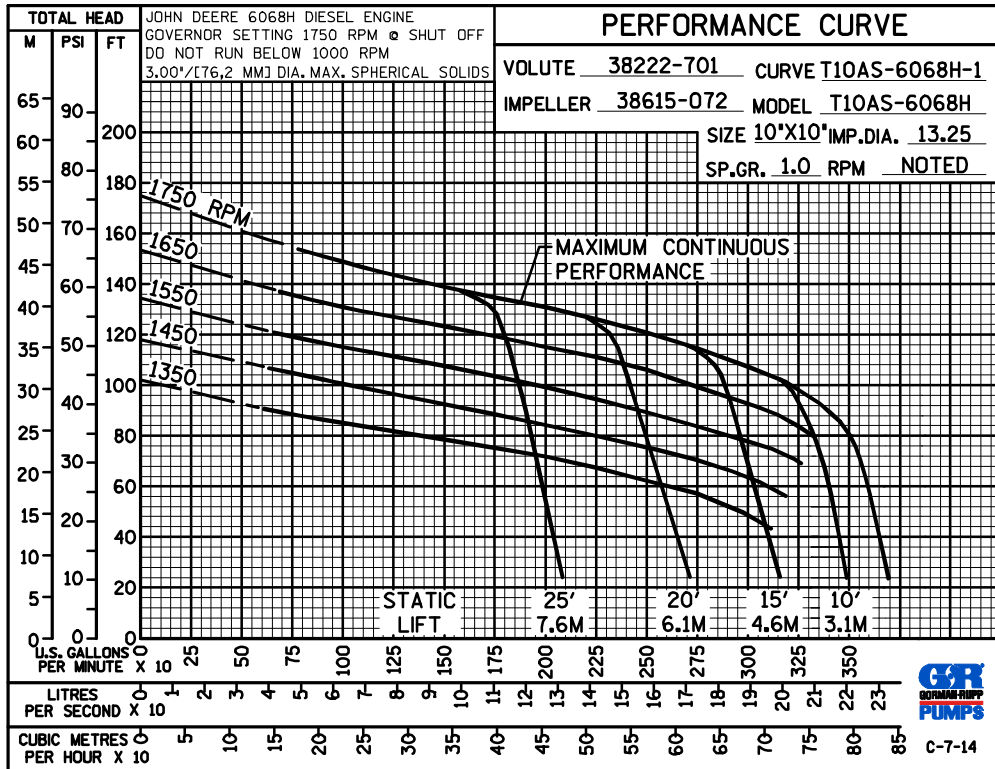
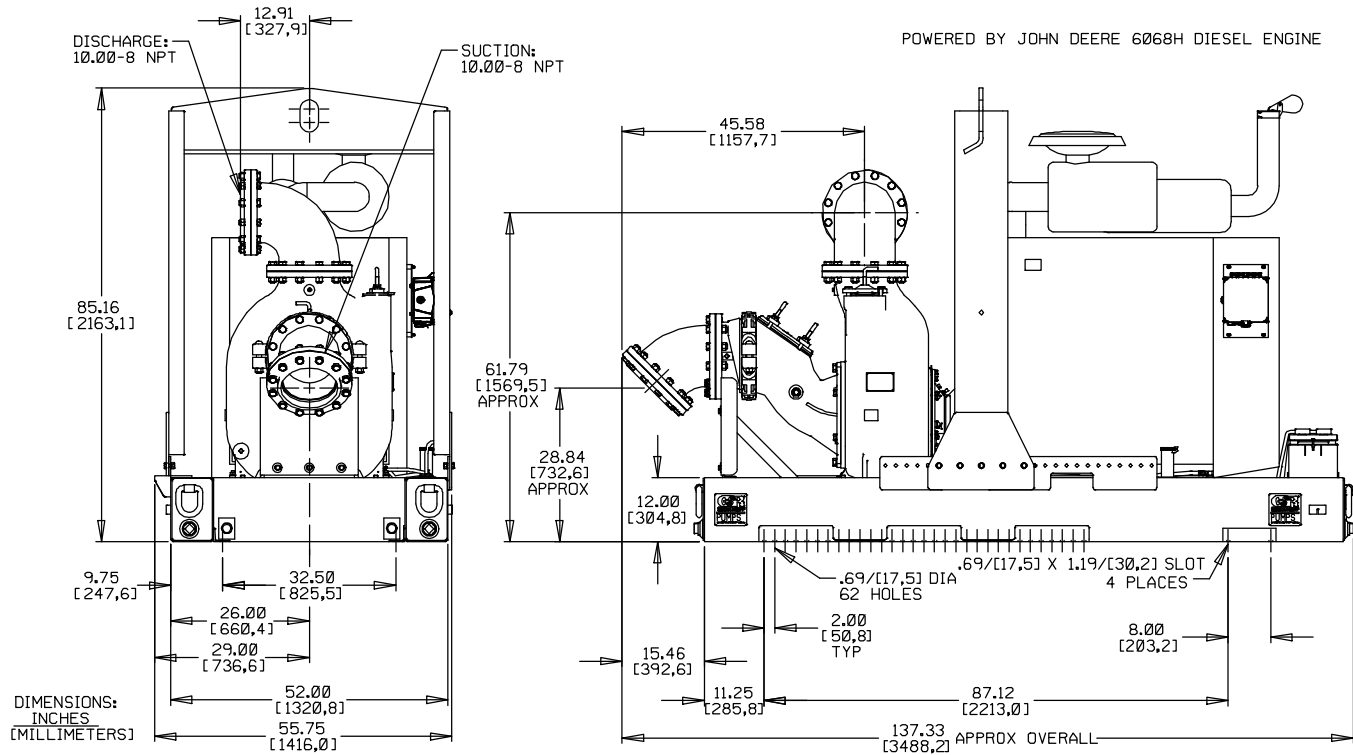
SECTION 45, PAGE 1697

APPROXIMATE DIMENSIONS and WEIGHTS

NET WEIGHT:  
SHIPPING WEIGHT:  
EXPORT CRATE SIZE:

SKID BASE  
6250 LBS. (2835 KG.)  
6550 LBS. (2971 KG.)  
467 CU. FT. (13,2 CU. M.)

2-WHEEL  
8225 LBS. (3731 KG.)  
8225 LBS. (3731 KG.)



**GORMAN-RUPP PUMPS**

www.grpumps.com

Specifications Subject to Change Without Notice

Printed in U.S.A.