

Diesel Engine Driven

Self Priming Centrifugal Pump w/Autostart

Model T6A60S-F4L

Size 6" x 6"



Total Head		Capacity of Pump in U.S. Gallons per Minute (GPM) at Continuous Performance			
P.S.I.	Feet				
59.4	137	410	410	410	410
52.0	120	730	750	750	750
43.4	100	750	1050	1170	1170
34.7	80	760	1060	1290	1470
26.0	60	770	1070	1300	1500
17.4	40	780	1080	1310	1510
Suction Lift		25'	20'	15'	10'

PHOTO NOT AVAILABLE AT TIME OF PUBLISHING

PUMP SPECIFICATIONS

Size: 6" x 6" (152 mm x 152 mm) NPT - Female.
Casing: Gray Iron 30. Maximum Operating Pressure 99 psi (683 kPa).*
Semi-Open Type, Two Vane Impeller: Ductile Iron 65-45-12.
 Handles 3" (76,2 mm) Diameter Spherical Solids.
Impeller Shaft: Stainless Steel 17-4 PH.
Replaceable Wear Plate: Carbon Steel 1015.
Removable Adjustable Cover Plate: Gray Iron 30.
Removable Inspection Cover Plate: Gray Iron 30; 20 lbs. (9,1 kg.).
Flap Valve: Neoprene w/Steel Reinforcement.
Drive Flange: Gray Iron 30.
Seal Plate: Gray Iron 30.
Shaft Sleeve: Alloy Steel 4130.
Seal: Cartridge Type, Mechanical, Oil-Lubricated, Double Floating, Self-Aligning. Silicon Carbide Rotating and Stationary Faces. Stainless Steel 316 Stationary Seat. Fluorocarbon Elastomers (DuPont Viton® or Equivalent). Stainless Steel 18-8 Cage and Spring. Maximum Temperature of Liquid Pumped 160°F (71°C).*
Bearing Housing: Gray Iron 30.
Radial Bearing: Open Single Row Ball.
Thrust Bearing: Open Double Row Ball.
Bearing and Seal Cavity Lubrication: SAE 30 Non-Detergent Oil.
Flanges: Gray Iron 30.
Gaskets: Buna-N, Compressed Synthetic Fibers, PTFE, Vegetable Fiber, Cork, and Rubber.
O-Rings: Buna-N.
Hardware: Standard Plated Steel.
Brass Pressure Relief Valve.
Bearing and Seal Cavity Oil Level Sight Gauges.
Standard Equipment: Hoisting Bail. 90° Discharge Elbow. Combination Skid Base w/Fuel Tank. Single Ball Type Float Switch.**
****50 Ft. (15 m) Standard Length; Dual Switches and Alternate Cable Lengths Available From the Factory.**
Optional Equipment: Battery. G-R Hard Iron Impeller and Seal Plate. Hardened Steel Wear Plate. Eradicator Wear Plate. High Speed (55 MPH/89 KM/H) Single Axle Pneumatic-Tired Wheel Kit w/w₀ DOT-Approved Lights and Electric Brakes. Tandem Axle Over-the-Road Trailer (Meets DOT Requirements) Available w/Either Electric or Hydraulic Surge Brakes, Running Lights, Jack Stands and Safety Cables/Chains. EPS w/Submersible Transducer Liquid Level Sensor.
 *Consult Factory for Applications Exceeding Maximum Pressure and/or Temperature Indicated.

WARNING!

Do not use in explosive atmosphere or for pumping volatile flammable liquids.

ENGINE SPECIFICATIONS

Model: Deutz D914L4.
Type: Four Cylinder, Four Cycle, Air Cooled Diesel Engine.
Displacement: 263.2 Cu. In. (4,3 Liters).
Governor: Mechanical.
Lubrication: Forced Circulation.
Air Cleaner: Dry Element.
Oil Reservoir: 13.7 U.S. Qts. (13 Liters) Dry; 12.7 U.S. Qts. (12 Liters) Refill.
Fuel Tank: 88 U.S. Gallons (333 Liters).
Full Load Operating Time: 31.5 Hrs.
Starter: 12Volt Electric.
Standard Features: High Oil Temperature, Low Oil Pressure, V-belt, Alternator and Start Failure Safety Shut Down Switches/Indicators. Fuel Level Gauge. Throttle Control. Autostart Instrument Panel Includes: Temperature Gauge, Oil Pressure Gauge, Ammeter, Hourmeter, Tachometer, Manual/Stop/ Auto Key Switch, 15 Amp Fuse, Audible Startup Warning Delay. Muffler w/Guard and Weather Cap.

DEUTZ PUBLISHED PERFORMANCE:
 Maximum Gross Continuous B.H.P.
 73.7 (55 kW) @ 2300 RPM



GORMAN-RUPP PUMPS

www.grpumps.com

Specifications Subject to Change Without Notice

Printed in U.S.A.

Specification Data

SECTION 45, PAGE 1590

APPROXIMATE DIMENSIONS and WEIGHTS

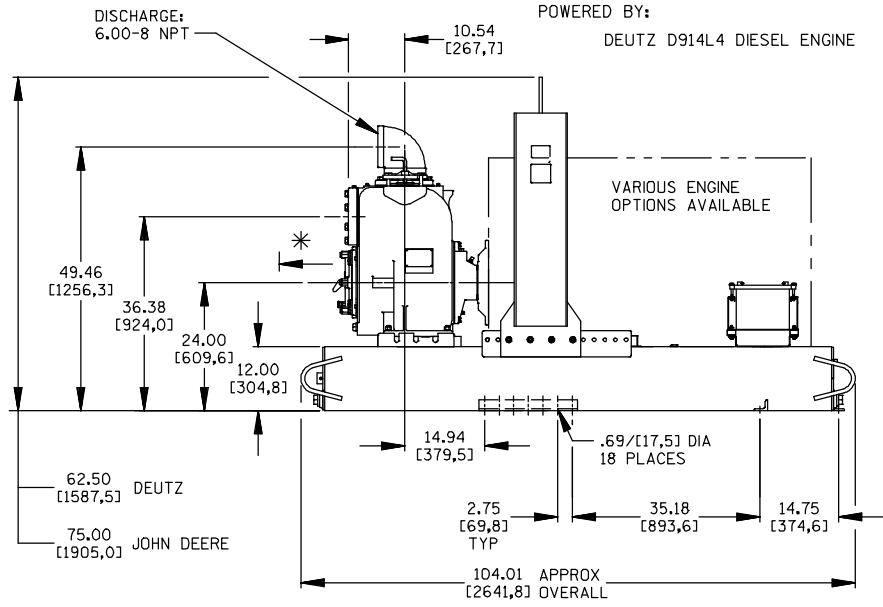
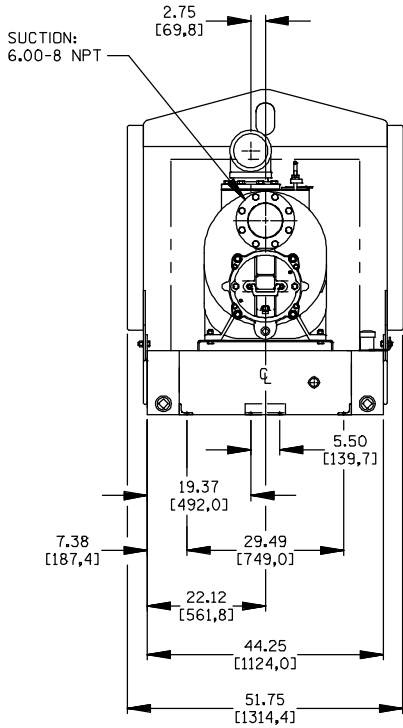
NET WEIGHT:
SHIPPING WEIGHT:
EXPORT CRATE SIZE:

SKID BASE

3055 LBS. (1386 KG.)
3290 LBS. (1492 KG.)
273 CU. FT. (7,7 CU. M.)

2-WHEEL

3565 LBS. (1617 KG.)
3565 LBS. (1617 KG.)

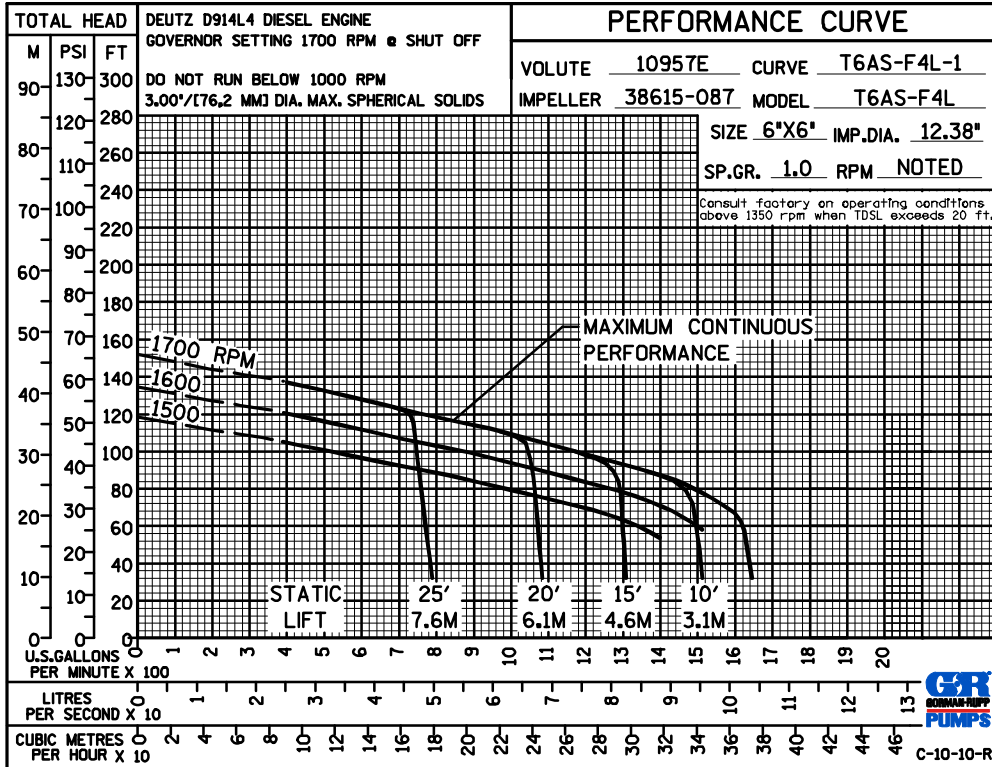


DIMENSIONS:
INCHES
[MILLIMETERS]

* 18.00/[457,2] RECOMMENDED FOR REMOVAL OF BACK COVER PLATE
11.00/[279,4] REQUIRED FOR REMOVAL OF BACK COVER PLATE

POWERED BY:
DEUTZ D914L4 DIESEL ENGINE

VARIOUS ENGINE
OPTIONS AVAILABLE



GORMAN-RUPP PUMPS

www.grpumps.com

Specifications Subject to Change Without Notice

Printed in U.S.A.