

ACE

# Self Priming Centrifugal Pump

Diesel Engine Driven

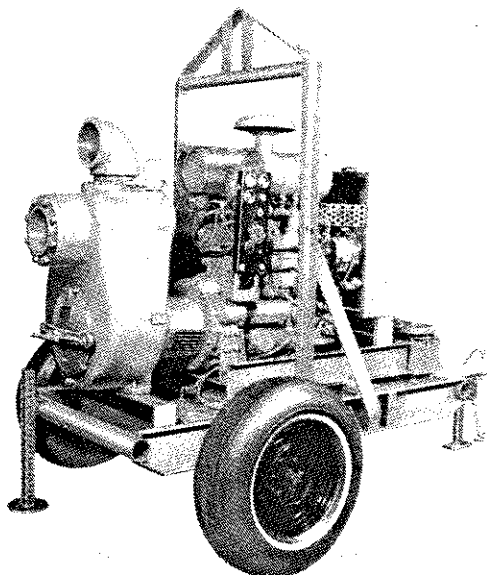
Model 16C2-4039D and 16C20-4039D

Size 6" x 6"



70 MT

Total Head		CAPACITY OF PUMP IN U.S. GALLONS PER MINUTE AT CONTINUOUS PERFORMANCE				
P.S.I.	Feet					
64	147	420	420	420	420	420
54	125	615	875	930	939	930
43.5	100	660	945	1170	1340	1350
33	75	685	960	1195	1425	1515
22	50	695	960	1205	1455	1565
Suction lift		25'	20'	15'	10'	5'



**PUMP SPECIFICATIONS**

Size: 6" [152,4 mm] x 6" [152,4 mm] N.P.T.-Female  
 Casing: Gray Iron No. 30  
 (Maximum Operating Pressure 130 psi. [896 kPa])  
 Impeller: Open Type, Two Vanes, Ductile Iron No. 60-40-18  
 (Handles 3" [76,2 mm] Dia. Spherical Solids)  
 Impeller Shaft: Alloy Steel No. 4140  
 Wear Plate; Replaceable: Steel No. 1018  
 Cover Plate; Removable: Gray Iron No. 30 (47 lbs. [21.3 kg.])  
 Intermediate Bracket: Gray Iron No. 30  
 Seal Plate: Gray Iron No. 30  
**Seal: (Model 16C2-4039D Only)**  
 Double Grease-Lubricated with Spring Loaded Grease Cup.  
 Sintered Bronze Stationary Seal Seats. Rotating Faces Are Steel.  
 Maximum Temperature of Liquid Pumped, 110°F [43°C]  
 Maximum Suction Pressure 10 Pounds Per Square Inch [69 kPa].  
**Seal: (Model 16C20-4039D Only)**  
 Mechanical Oil-Lubricated Double Floating Self-Aligning.  
 Rotating and Stationary Faces are Tungsten Titanium Carbide.  
 Stationary Seat is Stainless Steel No. 316. Elastomers are Viton.  
 Cage and Spring are Stainless Steel No. 18-8. Maximum  
 Temperature of Liquid Pumped is 160°F [71°C]\*  
 \* Consult factory for applications with liquids in excess of  
 temperature indicated.  
 Seal Liner: Bronze No. C83600 (Model 16C2-4039D Only)  
 Shaft Sleeve: Alloy Steel No. 4130 (Model 16C20-4039D Only)  
 Flap Valve: Neoprene with Steel Reinforcing  
 Radial Bearing: Open Ball  
 Thrust Bearing: Open Double Ball  
 Bearing Lubrication: Oil  
 Flanges: Gray Iron No. 30  
 Gaskets: Resistant Synthetic Rubber & Cork; Vegetable Fiber;  
 Compressed Synthetic Fibers; Teflon  
 Hardware: Standard Plated Steel  
**Standard Equipment:**  
 Hoisting Bail  
 Skid Base  
 90° Discharge Elbow  
 Strainer  
 Oil Level Sight Gauge  
**Optional Equipment:**  
 2 Wheel Truck Assy with Pneumatic Tires, P235/75R15  
 Battery  
 Over the Road Trailer (Meets D.O.T. Requirements)

**ENGINE SPECIFICATIONS**

Model: John Deere 4039D  
 Type: Four Cylinder, Four Cycle,  
 Liquid Cooled Diesel Engine  
 Displacement: 239 Cu. In. [3.9 L]  
 Governor: Mechanical  
 Lubrication: Forced Circulation  
 Air Cleaner: Dry Type  
 Oil Reservoir: 9 U.S. Quarts [8.5 L]  
 Fuel Tank: 38.9 U.S. Gallons [147.2 L]  
 Operating Time; Full Load: 12.5 Hours  
 Starter: 12 Volt Electric

**Standard Features:**

Safety Shut Down Switches for Low Oil Pressure  
 and High Coolant Temperature.  
 Instrument Panel with Temp. Gauge, Oil pressure  
 Gauge, Ammeter, Hourmeter & Tachometer.  
 Muffler with Guard and Weather Cap.

**JOHN DEERE PUBLISHED PERFORMANCE:**

Max. Cont. B.H.P. 71 @ 2200 RPM  
 Max. Dyn. B.H.P. 80 @ 2500 RPM

**WARNING**  
 DO NOT USE IN EXPLOSIVE  
 ATMOSPHERE OR FOR PUMPING  
 VOLATILE FLAMMABLE LIQUIDS



THE GORMAN-RUPP COMPANY • MANSFIELD, OHIO

GORMAN-RUPP OF CANADA LIMITED • ST. THOMAS, ONTARIO, CANADA

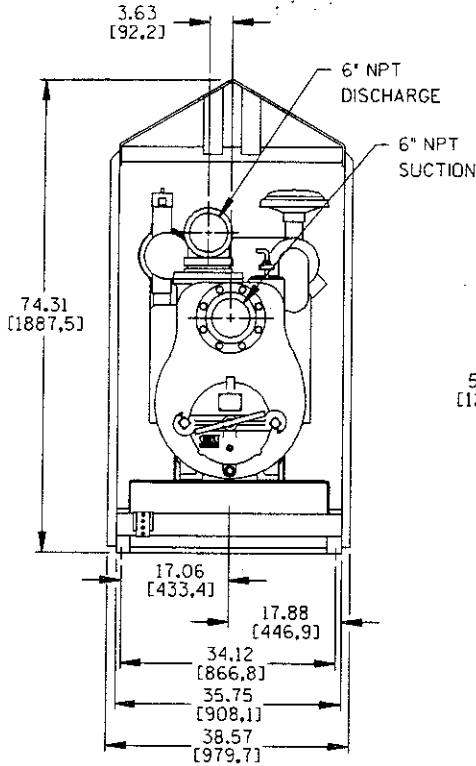
Printed in U.S.A.

**Specification Data**

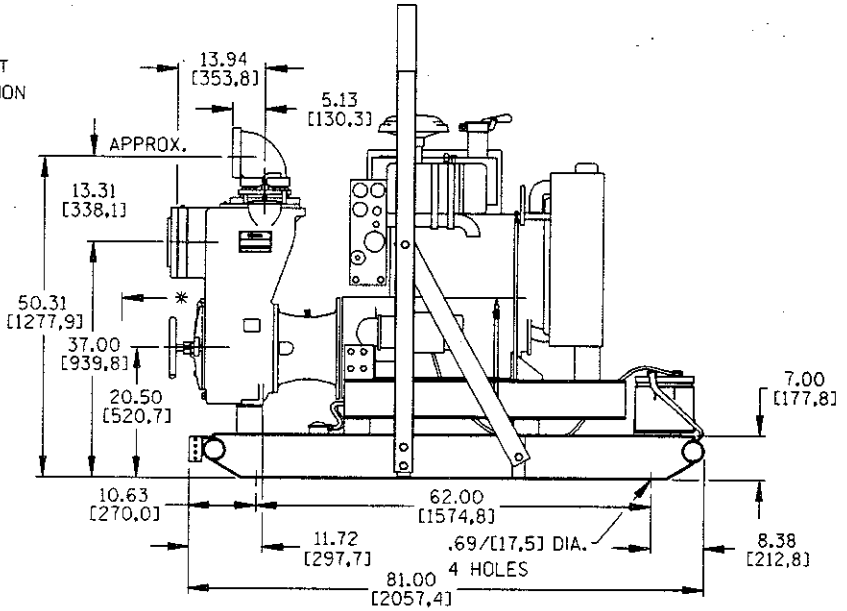
SECTION 45, PAGE 1460

OVERALL DIMENSIONS  
and  
WEIGHTS APPROXIMATE

	<b>SKID BASE</b>	<b>2-WHEEL</b>
<b>NET WEIGHT:</b>	2482 LBS. [1126 KG.]	2756 LBS. [1250 KG.]
<b>SHIPPING WEIGHT:</b>	2582 LBS. [1171 KG.]	2756 LBS. [1250 KG.]
<b>EXPORT CRATE:</b>	156 CU. FT. [4.4 CU. M.]	174 CU. FT. [4.9 CU. M.]

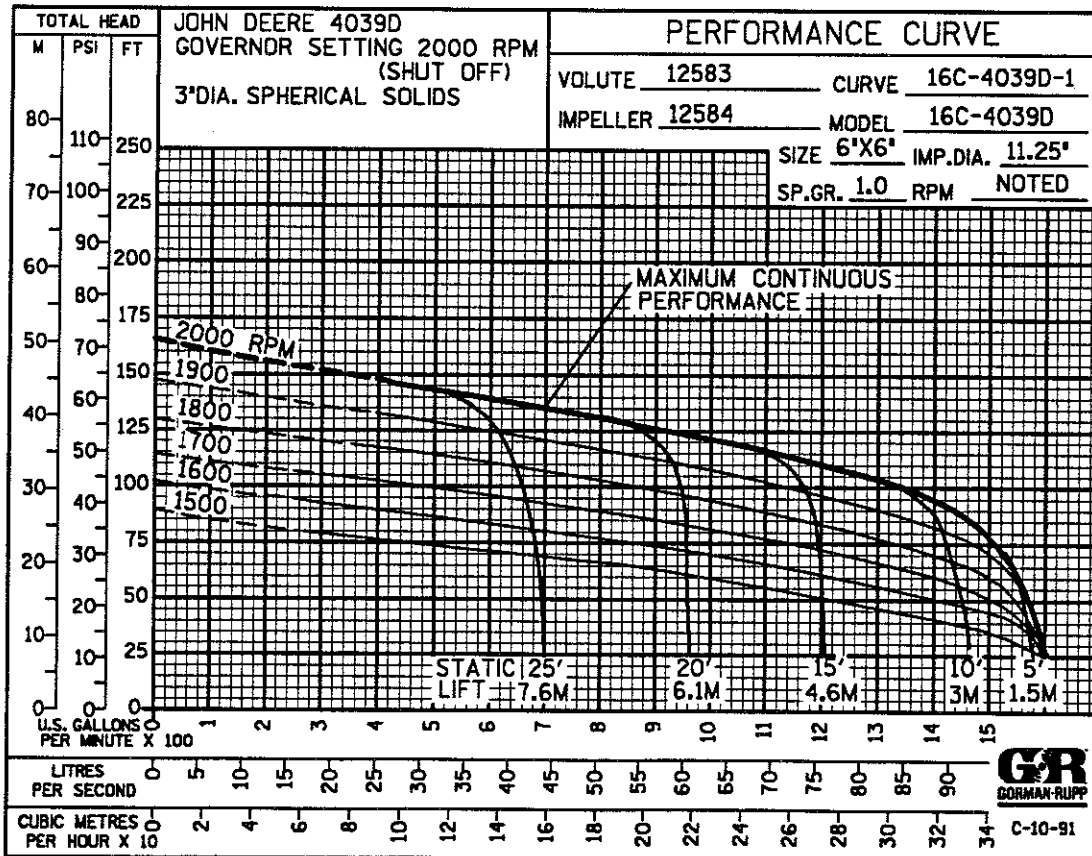


\* 18.00/[457,2] REQUIRED FOR  
REMOVAL OF BACK COVER PLATE



POWERED BY:  
JOHN DEERE 4039D DIESEL ENGINE

DIMENSIONS:  
INCHES  
[MILLIMETERS]



THE GORMAN-RUPP COMPANY • MANSFIELD, OHIO

GORMAN-RUPP OF CANADA LIMITED • ST. THOMAS, ONTARIO, CANADA

Printed in U.S.A.