



Self Priming Centrifugal Pump

Gasoline Engine Driven

Models 16C2-F300 and 16C20-F300

Size 6" x 6"



70 MT

| Total Head | | Capacity Of Pump In U.S. Gallons Per Minute (GPM) At Continuous Performance | | | | |
|--------------|------|---|-----|------|------|------|
| PS.I. | Feet | | | | | |
| 75.9 | 175 | 580 | 580 | 580 | 580 | 580 |
| 65.0 | 150 | 605 | 895 | 1050 | 1050 | 1050 |
| 54.2 | 125 | 640 | 920 | 1160 | 1330 | 1370 |
| 43.4 | 100 | 660 | 935 | 1180 | 1380 | 1500 |
| 32.5 | 75 | 680 | 945 | 1195 | 1415 | 1550 |
| 21.7 | 50 | 690 | 950 | 1205 | 1440 | 1570 |
| 10.8 | 25 | 700 | 960 | 1210 | 1460 | 1580 |
| Suction Lift | | 25' | 20' | 15' | 10' | 5' |

PUMP SPECIFICATIONS

Size: 6" x 6" (152 mm x 152 mm) N.P.T. Female.

Pump Casing: Gray Iron No. 30. Maximum Operating Pressure 130 psi. (896 kPa).*

Open Type, Two Vane Impeller: Ductile Iron No. 65-45-12. Handles 3" (76,2 mm) Diameter Spherical Solids.

Impeller Shaft: Alloy Steel 4140.

Replaceable Wear Plate: Carbon Steel Grade C-1045.

Removable Cover Plate: Gray Iron No. 30. 47 lbs. (21.3 kg.).

Intermediate Bracket: Gray Iron No. 30.

Seal Plate: Gray Iron No. 30.

Seal (Model 16C2-F300 Only): Double Grease-Lubricated with Spring Loaded Grease Cup. Sintered Bronze Stationary Seal Seats. Steel Rotating Faces. Neoprene Packing Rings. Maximum Temperature of Liquid Pumped, 110°F (43°C).* Maximum Suction Pressure 10 psi (69 kPa).*

Seal (Model 16C20-F300 Only): Mechanical Oil-Lubricated Floating Self-Aligning. Tungsten Titanium Carbide Rotating and Stationary Faces. Stainless Steel Type 316 Stationary Seat. Fluorocarbon Elastomers (DuPont Viton® or Equivalent). Stainless Steel Type 18-8 Cage and Spring. Maximum Temperature of Liquid Pumped 160°F (71°C).*

Seal Liner (Model 16C2-F300 Only): Bronze No. C83600.

Shaft Sleeve (Model 16C20-F300 Only): Alloy Steel No. 4130.

Flap Valve: Neoprene with Steel Reinforcing.

Radial Bearing: Open Ball.

Thrust Bearing: Open Double Ball.

Bearing Lubrication: Oil.

Flanges: Gray Iron No. 30.

Gaskets: Cork with Nitrile Binder (NC710), Vegetable Fiber, Buna-N and PTFE.

Hardware: Standard Plated Steel.

Hoisting Bail.

Skid Base.

90° Discharge Elbow.

Strainer.

Oil Level Sight Gauge.

Optional Equipment: Battery. Two Wheel Truck Assembly with P235/75R15 Pneumatic Tires. Over-the-Road Trailer (Meets D.O.T and Transport Canada Requirements)

*Consult Factory for Applications Exceeding Maximum Pressure and/or Temperature Indicated.



Shown with Optional Wheel Kit



ENGINE SPECIFICATIONS

Model: Ford C5PG (F300).

Type: Six Cylinder, Four Cycle, Liquid Cooled Gasoline Engine.

Displacement: 300 Cu. In. (4.9 Liters).

Governor: Mechanical.

Lubrication: Pressure System.

Air Cleaner: Oil Bath.

Oil Reservoir: 7 U.S. Quarts (6.6 Liters) Dry.
6 U.S. Quarts (5.7 Liters) Refill.

Fuel Tank: 38.9 U.S. Gallons (147.3 Liters).

Full Load Operating Time: 3.8 Hours.

Starter: 12 Volt Electric.

Standard Features: Safety Shut Down Switches for Low Oil Pressure and High Coolant Temperature. Instrument Panel with: Temperature Gauge, Oil Pressure and Alternator Warning Lights. Hood and Side Panels. Muffler with Guard and Weather Cap.

Optional Equipment: Hourmeter, Tachometer.

FORD PUBLISHED PERFORMANCE:

Maximum Continuous B.H.P. 101 @ 2800 RPM

Maximum Dynamic B.H.P. 124 @ 3600 RPM



THE GORMAN-RUPP COMPANY • MANSFIELD, OHIO

GORMAN-RUPP OF CANADA LIMITED • ST. THOMAS, ONTARIO, CANADA

Specifications Subject to Change Without Notice

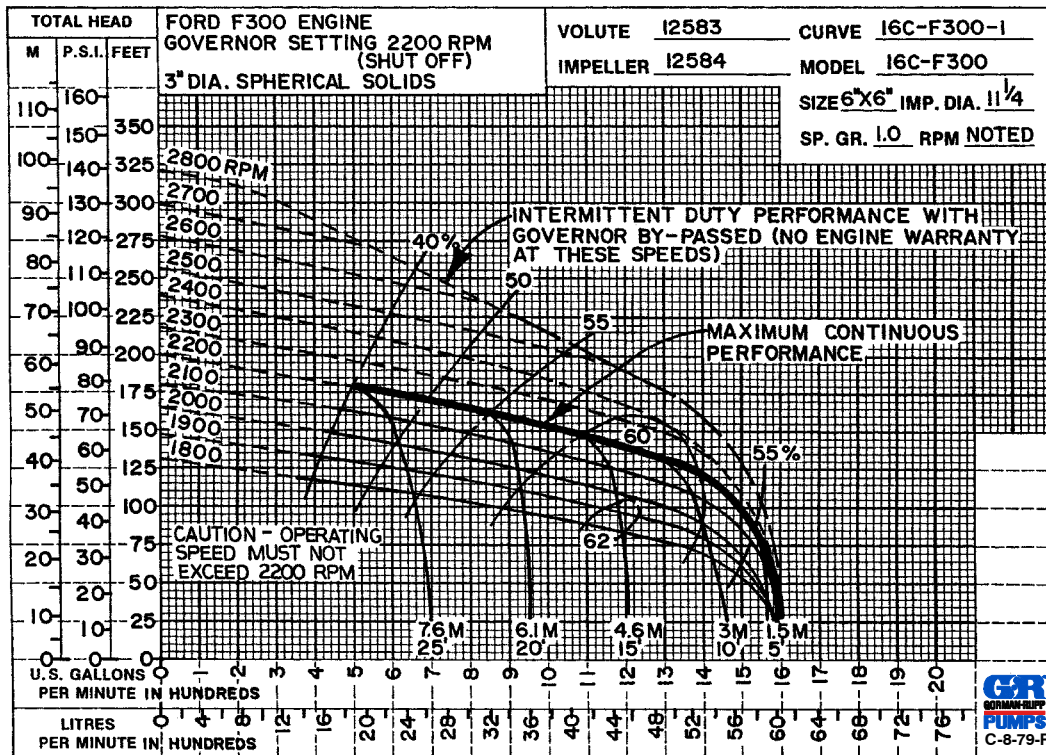
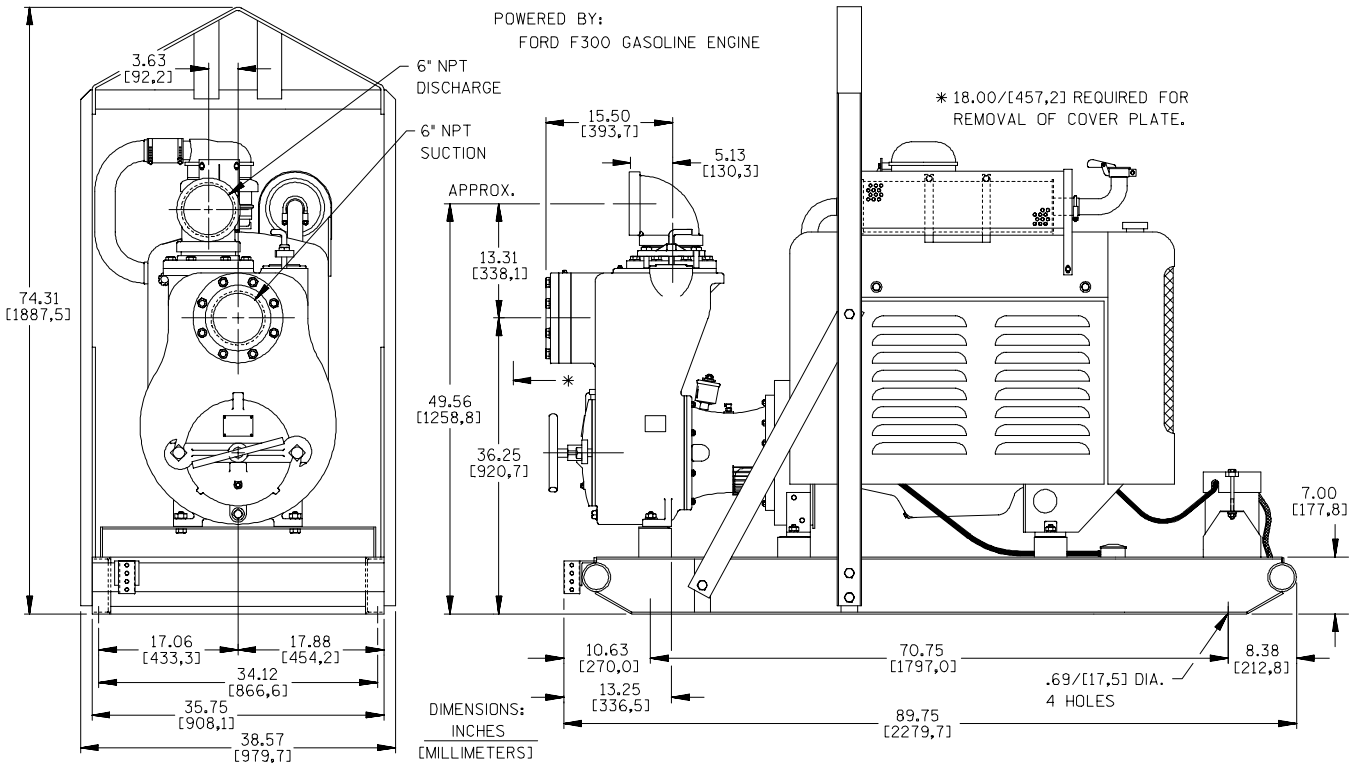
Printed in U.S.A.

Specification Data

SECTION 45 PAGE 1425

APPROXIMATE
DIMENSIONS and
WEIGHTS

| | | |
|-------------------------|----------------------------|-----------------------|
| | SKID BASE | 2-WHEEL |
| NET WEIGHT: | 1844 LBS. [836.4 KG.] | 2142 LBS. [971.6 KG.] |
| SHIPPING WEIGHT: | 1900 LBS. [861.8 KG.] | 2142 LBS. [971.6 KG.] |
| EXPORT CRATE: | 182.7 CU. FT. [5.2 CU. M.] | |



THE GORMAN-RUPP COMPANY • MANSFIELD, OHIO

GORMAN-RUPP OF CANADA LIMITED • ST. THOMAS, ONTARIO, CANADA

Specifications Subject to Change Without Notice

Printed in U.S.A.