

Diesel Engine Driven

# Self Priming Centrifugal Pump

Model 16A2-4045T

Size 6" x 6"



Total Head		Capacity of Pump in U.S. Gallons per Minute (GPM) at Continuous Performance				
P.S.I.	Feet					
62.9	145	380	380	380	380	380
54.2	125	520	800	840	840	840
43.4	100	582	895	1061	1200	1244
32.5	75	640	940	1120	1262	1378
21.7	50	680	962	1164	1320	1410
10.8	25	710	990	1220	1380	1420
<b>Suction Lift</b>		<b>25'</b>	<b>20'</b>	<b>15'</b>	<b>10'</b>	<b>5'</b>



**PUMP SPECIFICATIONS**

**Size:** 6" x 6" (152 mm x 152 mm) NPT - Female.  
**Casing:** Gray Iron 30.  
 Maximum Operating Pressure 107 psi (738 kPa). \*  
**Semi-Open, Two Vane Impeller:** Ductile Iron 60-40-18.  
 Handles 2 1/2" (63,5 mm) Diameter Spherical Solids.  
**Impeller Shaft:** Alloy Steel 4150.  
**Replaceable Wear Plate:** Carbon Steel ASTM A36.  
**Removable Cover Plate:** Gray Iron 30; 60 lbs. (27 kg).  
**Intermediate:** Gray Iron 30.  
**Seal Plate:** Gray Iron 30.  
**Seal:** Double, Grease-Lubricated w/Spring Loaded Grease Cup. Sintered Bronze Stationary Seal Seats. Steel Rotating Faces. Neoprene Packing Rings. Maximum Temperature of Liquid Pumped, 110°F (43°C). Maximum Suction Pressure 10 psi (69 kPa)\*.  
**Seal Liner:** Copper Alloy C93700.  
**Flap Valve:** Buna-N w/Nylon Reinforcement and Steel.  
**Radial Bearing:** Open Single Row Ball.  
**Thrust Bearing:** Open Double Row Ball.  
**Bearing Lubrication:** SAE 30 Non-Detergent Oil.  
**Suction Flange:** Gray Iron 30.  
**Gaskets:** Cork, Vegetable Fiber and PTFE.  
**Hardware:** Standard Plated Steel.  
**Standard Equipment:** Hoisting Bail. Combination Skid Base w/Fuel Tank. Strainer. 90° Discharge Elbow. Oil Level Sight Gauge.  
**Optional Equipment:** Battery. High Speed (55 MPH/89 KM/H) Single Axle Pneumatic-Tired Wheel Kit w/wo DOT-Approved Lights and Electric Brakes. Tandem Axle Over-the-Road Trailer.

*\*Consult Factory for Applications Exceeding Maximum Pressure and/or Temperature Indicated.*

**WARNING!**  
 Do not use in explosive atmosphere or for pumping volatile flammable liquids.

**ENGINE SPECIFICATIONS**

**Model:** John Deere 4045T "Power Tech".  
**EPA Tier:** Interim Tier 4.  
**Type:** Four Cylinder, Four Cycle, Turbocharged, Liquid Cooled Diesel Engine.  
**Displacement:** 276 Cu. In. (4,5 liter).  
**Lubrication:** Forced Circulation.  
**Air Cleaner:** Dry Type.  
**Fuel Tank:** 61 U.S. Gals. (231 Liter).  
**Full Load Operating Time:** 22 Hrs.  
**Starter:** 12Volt Electric.  
**Standard Features:** Muffler w/Weather Cap.  
**Optional:** Electronic Fuel Level Sensor.  
**Engine Control Features:** Padlockable Box with Throttle Control, Tachometer, Coolant Temperature, Oil Pressure, Voltage and Overstart Indicators/Shutdowns. Manual/Stop Keyswitch. Fuel Level Display/Alarm/Shutdown (For Use With Optional Fuel Level Sensor).

**JOHN DEERE PUBLISHED PERFORMANCE:**  
 Maximum Gross Intermittent  
 74 BHP (55 kW) @ 2400 RPM



GORMAN-RUPP PUMPS

www.grpumps.com

Specifications Subject to Change Without Notice

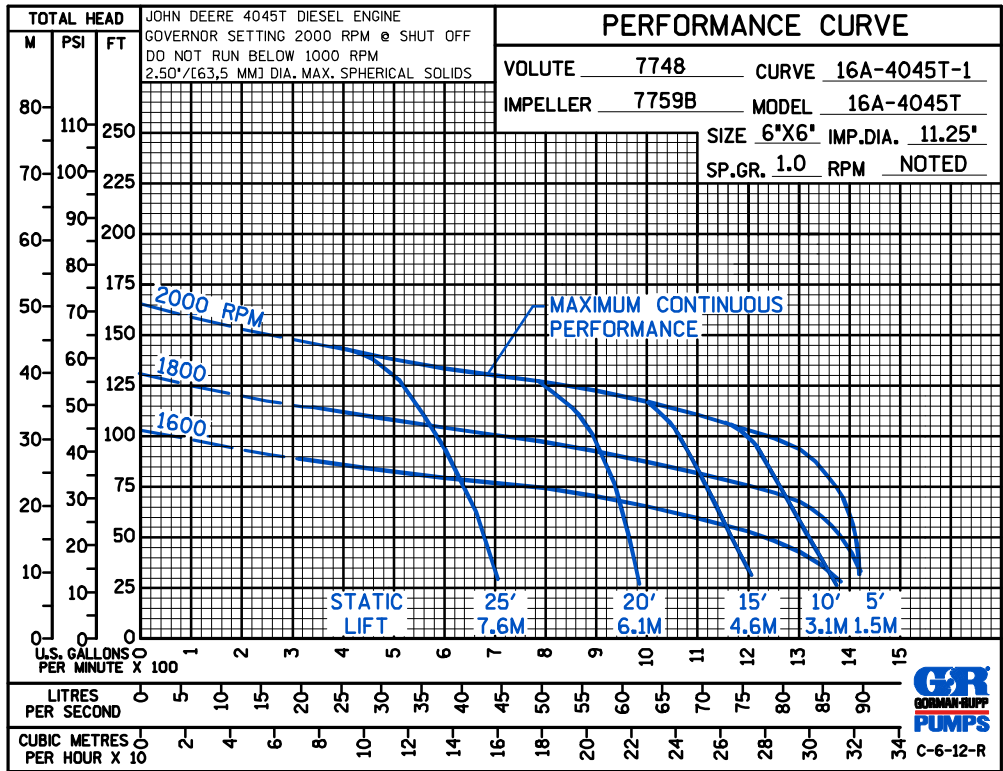
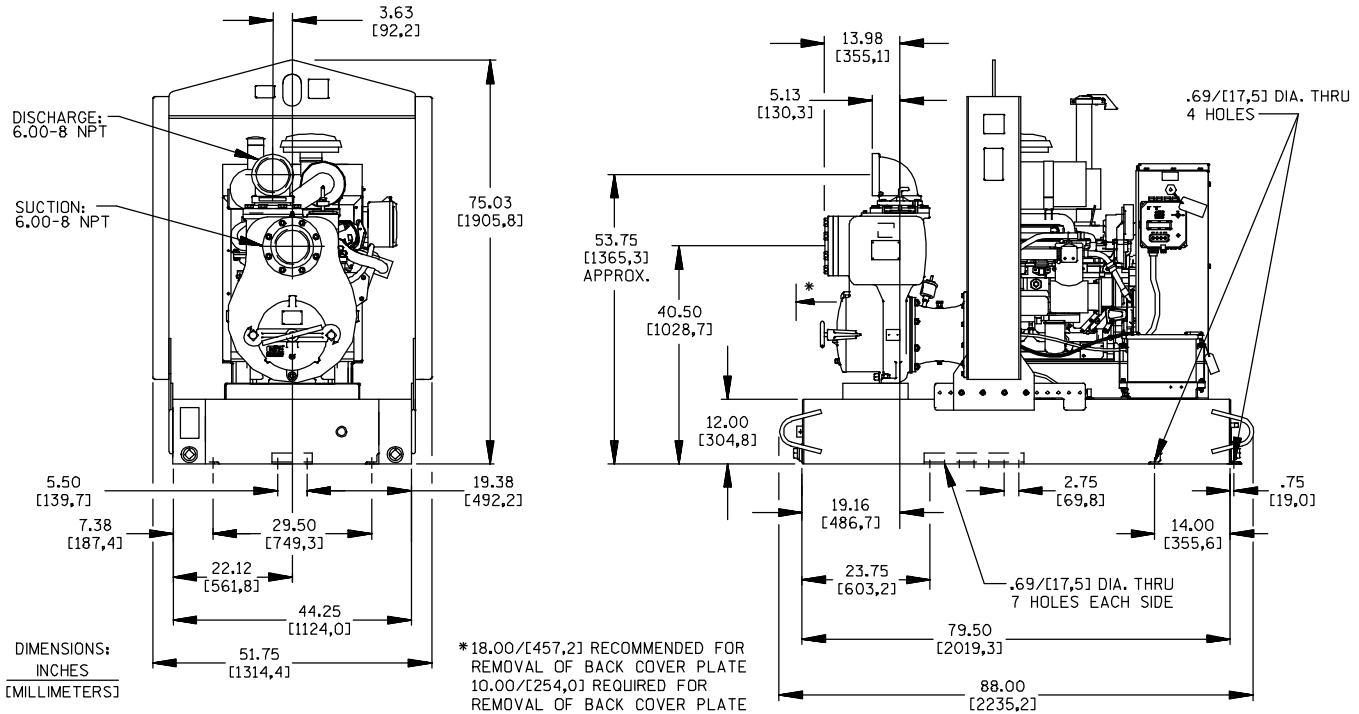
Printed in U.S.A.

# Specification Data

SECTION 45, PAGE 1355

APPROXIMATE DIMENSIONS and WEIGHTS

	SKID BASE	2-WHEEL
NET WEIGHT:	2510 LBS. (1139 KG.)	2794 LBS. (1267 KG.)
SHIPPING WEIGHT:	2700 LBS. (1225 KG.)	2794 LBS. (1267 KG.)
EXPORT CRATE SIZE:	134 CU. FT. (3,8 CU. M.)	152 CU. FT. (4,3 CU. M.)



GORMAN-RUPP PUMPS

www.grpumps.com

Specifications Subject to Change Without Notice

Printed in U.S.A.