

Diesel Engine Driven

ACDEU



Self Priming Centrifugal Pump

Model 16A2-4045D

Size 6" x 6"



70 MT

Total Head		Capacity of Pump in U.S. Gallons per Minute (GPM) at Continuous Performance				
P.S.I.	Feet					
80.0	185	290	290	290	290	290
75.9	175	315	415	415	415	415
65.0	150	440	695	915	915	915
54.2	125	518	800	1010	1130	1300
43.4	100	585	870	1060	1205	1375
32.5	75	635	930	1120	1265	1395
21.7	50	675	960	1170	1320	1410
Suction Lift		25'	20'	15'	10'	5'



PUMP SPECIFICATIONS

- Size:** 6" x 6" (152 mm x 152 mm) NPT - Female.
- Casing:** Gray Iron 30.
Maximum Operating Pressure 130 psi (896 kPa).*
- Semi-Open, Two Vane Impeller:** Ductile Iron 60-40-18.
Handles 2 1/2" (63,5 mm) Diameter Spherical Solids.
- Impeller Shaft:** Alloy Steel 4150.
- Replaceable Wear Plate:** Carbon Steel C1015.
- Removable Cover Plate:** Gray Iron 30; 60 lbs. (27 kg).
- Intermediate:** Gray Iron 30.
- Seal Plate:** Gray Iron 30.
- Seal:** Double, Grease-Lubricated with Spring Loaded Grease Cup. Sintered Bronze Stationary Seal Seats. Steel Rotating Faces. Maximum Temperature of Liquid Pumped, 110°F (43°C). Maximum Suction Pressure 10 psi (69 kPa)*.
- Seal Liner:** Copper Alloy C93700.
- Flap Valve:** Buna-N ^w/Nylon Reinforcement and Steel.
- Radial Bearing:** Open Single Row Ball.
- Thrust Bearing:** Open Double Row Ball.
Bearing Lubrication: SAE 30 Non-Detergent Oil.
- Suction Flange:** Gray Iron 30.
- Gaskets:** Cork, Vegetable Fiber and PTFE.
- Oil Level Sight Gage.**
- Hardware:** Standard Plated Steel.
- Standard Equipment:** Hoisting Bail. Skid Base. 90° Ductile Iron Discharge Elbow. Strainer. Oil Level Sight Gauge.
- Optional Equipment:** High Speed (55 MPH/89 KM/H) Single Axle Pneumatic-Tired Wheel Kit ^{w/wo} DOT-Approved Lights and Electric Brakes. Single Axle Over-the-Road Trailer (Meets DOT Requirements) Available ^w/Either Electric or Hydraulic Surge Brakes, Running Lights, Jack Stands and Safety Cables.

*Consult Factory for Applications Exceeding Maximum Pressure and/or Temperature Indicated.



ENGINE SPECIFICATIONS

- Model:** John Deere 4045D "Power Tech".
- Type:** Four Cylinder, Four Cycle, Liquid Cooled Diesel Engine.
- Displacement:** 276 Cu. In. (4,5 liter).
- Governor:** Mechanical.
- Lubrication:** Forced Circulation.
- Air Cleaner:** Dry Type.
- Oil Reservoir:** 9 U.S. Qts. (8,5 liter) Dry
8 U.S. Qts. (7,6 liter) Refill.
- Fuel Tank:** 38.9 U.S. Gals. (147,3 liter).
- Full Load Operating Time:** 16 Hrs.
- Starter:** 12Volt Electric.
- Standard Features:** Low Oil Pressure and High Coolant Temperature Shut Down Switches/Indicators. Throttle Control. Instrument Panel Includes: Tachometer, Voltmeter, Hourmeter, Coolant Temperature and Oil Pressure Indicators, Start/Stop Key Switch, 10 Amp Fuse, Muffler ^w/Guard and Weather Cap.

JOHN DEERE PUBLISHED PERFORMANCE:

Maximum Gross Continuous 72 BHP (54 kW) @ 2500 RPM



THE GORMAN-RUPP COMPANY • MANSFIELD, OHIO

GORMAN-RUPP OF CANADA LIMITED • ST. THOMAS, ONTARIO, CANADA

www.grpumps.com

Specifications Subject to Change Without Notice

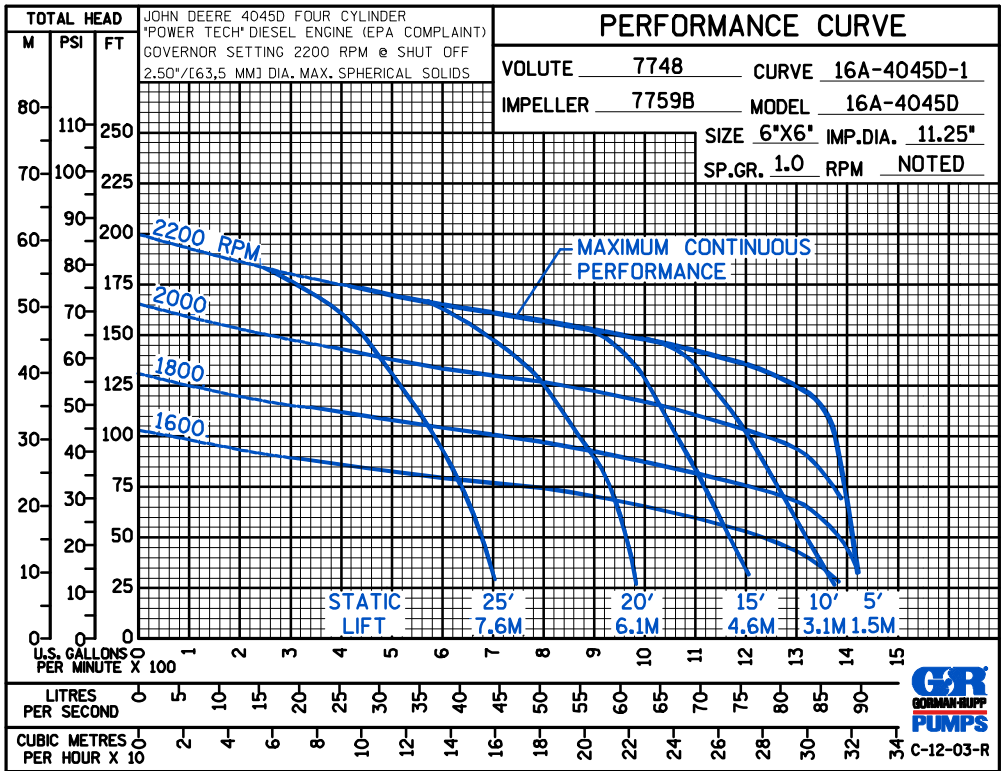
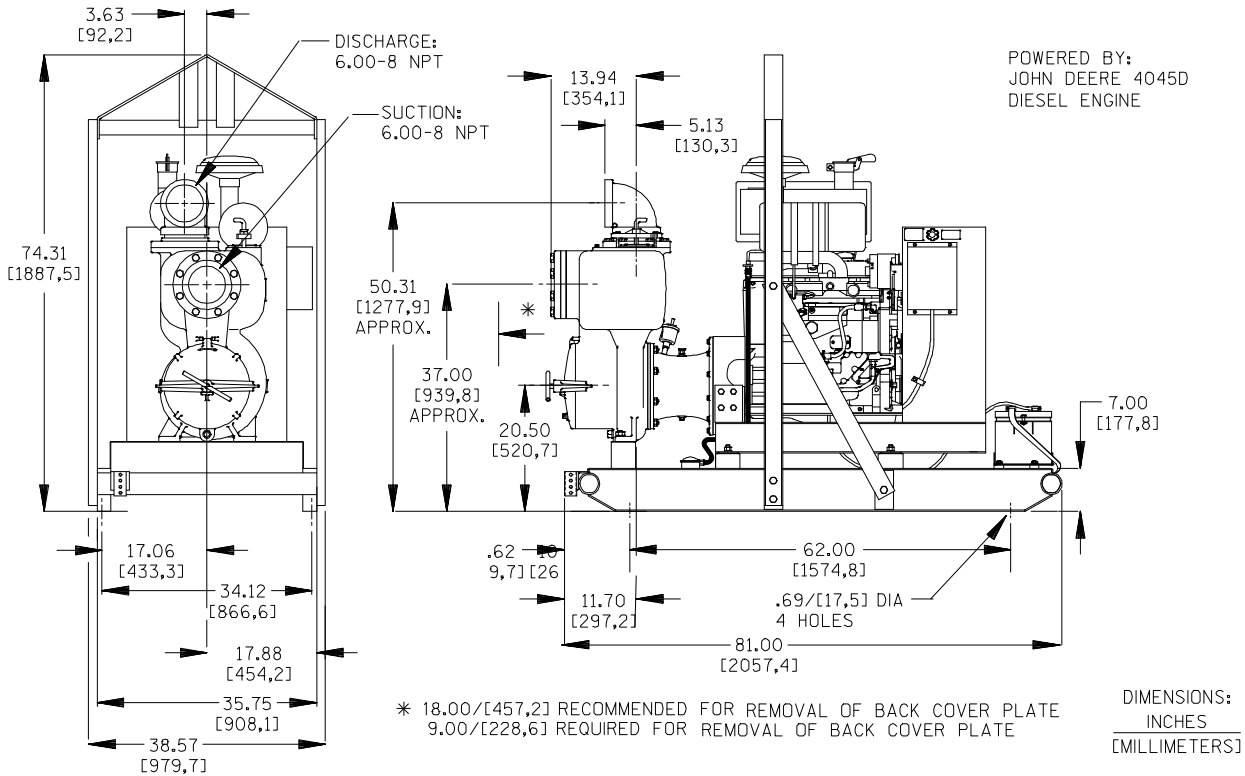
Printed in U.S.A.

Specification Data

SECTION 45, PAGE 1350

APPROXIMATE DIMENSIONS and WEIGHTS

	SKID BASE	2-WHEEL
NET WEIGHT:	2510 LBS. (1139 KG.)	2794 LBS. (1267 KG.)
SHIPPING WEIGHT:	2700 LBS. (1225 KG.)	2794 LBS. (1267 KG.)
EXPORT CRATE SIZE:	134 CU. FT. (3,8 CU. M.)	152 CU. FT. (4,3 CU. M.)



THE GORMAN-RUPP COMPANY • MANSFIELD, OHIO

GORMAN-RUPP OF CANADA LIMITED • ST. THOMAS, ONTARIO, CANADA

Specifications Subject to Change Without Notice

Printed in U.S.A.