

CDS

ULTRAV
SERIES

VARIOUS PATENTS APPLY

Diesel Engine Driven Self Priming Centrifugal Pump w/Autostart Model V6A60-D914L6 Size 8" x 6"



Total Head		Capacity of Pump in U.S. Gallons per Minute (GPM) at Continuous Performance			
P.S.I.	Feet				
74.6	172	490	490	490	490
69.4	160	760	880	880	880
60.7	140	938	1240	1400	1400
52.0	120	975	1300	1525	1735
43.4	100	1000	1320	1560	1795
34.7	80	1020	1340	1592	1840
26.0	60	1048	1365	1623	1862
17.3	40	1070	1390	1655	1890
8.7	20	1098	1418	1680	1918
Suction Lift		25'	20'	15'	10'

PUMP SPECIFICATIONS**Size:** 8" x 6" (203 mm x 154 mm) Flanged.**Casing:** Gray Iron 30. Maximum Operating Pressure 129 psi (889 kPa).***Semi-Open Type, Two Vane Impeller:** Ductile Iron 65-45-12.

Handles 3" (76.2 mm) Diameter Spherical Solids.

Impeller Shaft: Stainless Steel 17-4PH.**Self-Cleaning Replaceable Wear Plate:** Carbon Steel.**Shimless Adjustable Cover Plate:** Gray Iron 30.**Externally Removable Flap Valve:** Neoprene ^{w/}Nylon and Steel Reinforcing.**Suction Flange/Flap Valve Seat:** Gray Iron 30.**Bearing Housing:** Gray Iron 30.**Seal:** Cartridge Type, Mechanical, Oil-Lubricated, Double Floating, Self-Aligning. Silicon Carbide Rotating and Stationary Faces. Stainless Steel 316 Stationary Seat. Fluorocarbon Elastomers (DuPont Viton[®] or Equivalent). Stainless Steel 18-8 Cage and Spring. Maximum Temperature of Liquid Pumped, 160°F (71°C).***Seal Plate:** Gray Iron 30.**Shaft Sleeve:** Stainless Steel 17-4PH.**Radial and Thrust Bearings:** Open Double Row Ball.**Bearing and Seal Cavity Lubrication:** SAE 30 Non-Detergent Oil.**Gaskets:** Buna-N, Fluorocarbon (DuPont Viton[®] or Equivalent), PTFE, Compressed Synthetic Fibers, Vegetable Fiber, Cork and Rubber.**O-Rings:** Buna-N.**Hardware:** Standard Plated Steel.**Brass Pressure Relief Valve.****Bearing and Seal Cavity Oil Level Sight Gauges.*** **Consult Factory for Applications Exceeding Maximum Pressure and/or Temperature Indicated.****Standard Equipment:** Hoisting Bail. Combination Skid Base w/Fuel Tank. Strainer. Single Ball Type Float Switch.****Optional Equipment:** Gray Iron Flange Kits:

8" and 6" 125# Female NPT Suction/Discharge Flange Kits.

8" and 6" ASA Suction/Discharge Spool Flange Kits.

200 mm and 150 mm PN 16 Suction/Discharge Spool Flange Kits.

Stainless Steel/G-R Hard Iron Impeller and Wear Plate. Battery.

Single Axle Pneumatic-Tired Wheel Kit w/wo DOT-Approved Lights

and Electric Brakes. Over-the-Road Trailer (Meets D.O.T. and Transport

Canada Requirements) Available ^{w/}Either Electric or Hydraulic

Surge Brakes, Running Lights, Two Trailer Jack Stands and Safety

Chains. Two Float Switches. EPS ^{w/}Submersible Transducer Liquid

Level Sensor (50 Ft. [15 M] Cable Standard, Alternate Lengths Available).

**50 Ft. (15 m) Standard Length; Dual Switches and Alternate Cable Lengths Available From the Factory.



Shown with Optional Wheel Kit

**WARNING!**

Do not use in explosive atmosphere or for pumping volatile flammable liquids.

ENGINE SPECIFICATIONS**Model:** Deutz D914L6.**Type:** Six Cylinder, Four Cycle, Air Cooled Diesel Engine.**Displacement:** 395 Cu. In. (6,5 Liters).**Governor:** Mechanical.**Lubrication:** Forced Circulation.**Air Cleaner:** Oil Bath.**Oil Reservoir:** 17.4 U.S. Qts. (16,5 Liters) Dry; 15.8 U.S. Qts. (15,0 Liters) Refill.**Fuel Tank:** 88 U.S. Gallons (333 Liters).**Full Load Operating Time:** 19.7 Hrs.**Starter:** 12V Electric.**Standard Features:** High Oil Temperature, Low Oil Pressure, V-belt, Alternator and Start Failure Safety Shut Down Switches/Indicators. Fuel Level Gauge. Throttle Control. Autostart Instrument Panel with: Temperature Gauge, Oil Pressure Gauge, Ammeter, Hourmeter, Tachometer, Manual/Stop/Auto Key Switch, 15 Amp Fuse, Audible Startup Warning Delay. Muffler ^{w/}Guard and Weather Cap.**DEUTZ PUBLISHED PERFORMANCE:**

Maximum Gross Intermittent B.H.P. 115.9 (86 kW) @ 2300 RPM



THE GORMAN-RUPP COMPANY • MANSFIELD, OHIO

GORMAN-RUPP OF CANADA LIMITED • ST. THOMAS, ONTARIO, CANADA

www.grpumps.com

Specifications Subject to Change Without Notice

Printed in U.S.A.

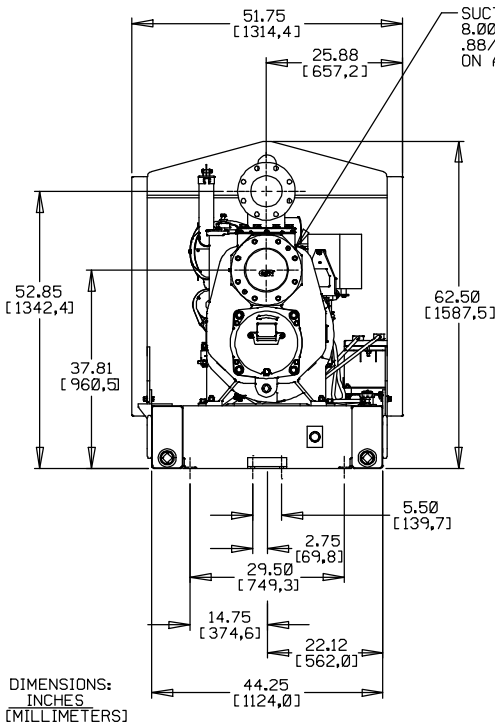
Specification Data

SECTION 45, PAGE 1625

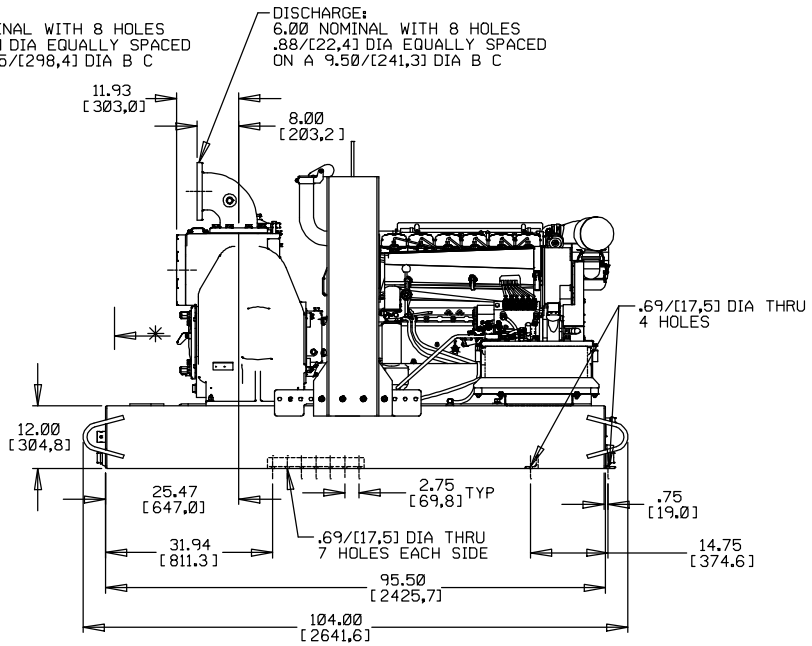
APPROXIMATE DIMENSIONS and WEIGHTS

SKID BASE
NET WEIGHT: 3126 LBS. (1417,9 KG.)
SHIPPING WEIGHT: 3426 LBS. (1554 KG.)
EXPORT CRATE SIZE: 215.2 CU. FT. (6,1 CU. M.)

2-WHEEL
3861 LBS. (1751,3 KG.)
3861 LBS. (1751,3 KG.)



SUCTION:
 8.00 NOMINAL WITH 8 HOLES
 .88/[22,4] DIA EQUALLY SPACED
 ON A 11.75/[298,4] DIA B C

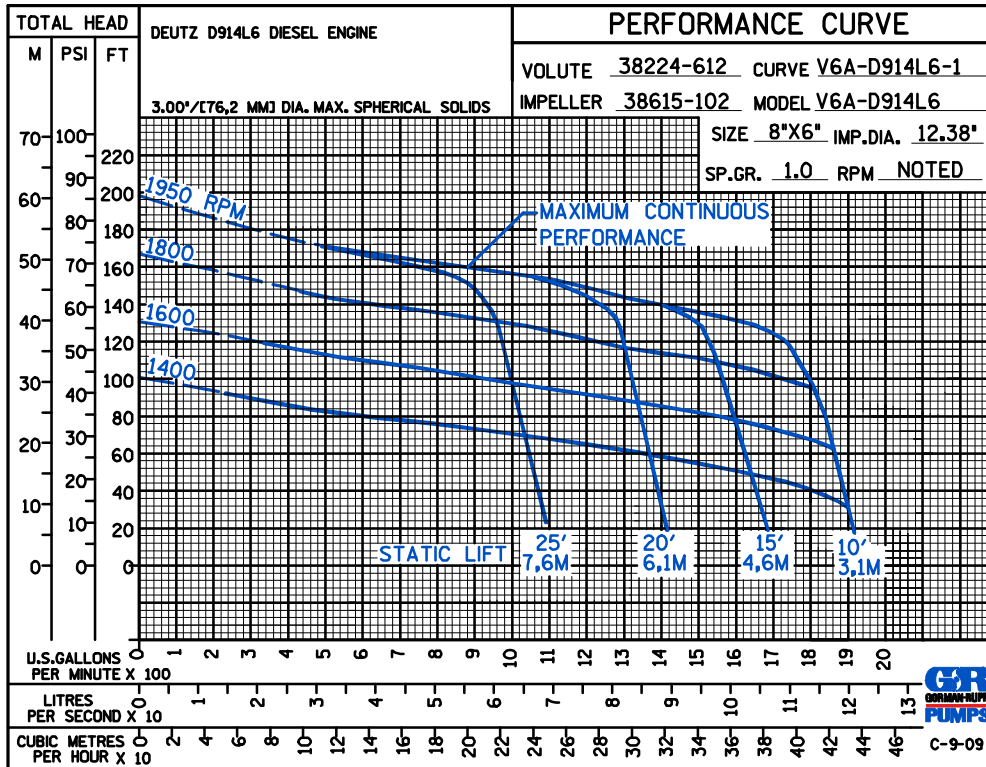


DISCHARGE:
 6.00 NOMINAL WITH 8 HOLES
 .88/[22,4] DIA EQUALLY SPACED
 ON A 9.50/[241,3] DIA B C

POWERED BY A DEUTZ D914L6 DIESEL ENGINE

* 18.00/[457,2] RECOMMENDED FOR REMOVAL OF BACK COVER PLATE
 10.50/[266,7] REQUIRED FOR REMOVAL OF BACK COVER PLATE

DIMENSIONS:
 INCHES
 [MILLIMETERS]



THE GORMAN-RUPP COMPANY • MANSFIELD, OHIO

GORMAN-RUPP OF CANADA LIMITED • ST. THOMAS, ONTARIO, CANADA

Specifications Subject to Change Without Notice

Printed in U.S.A.