

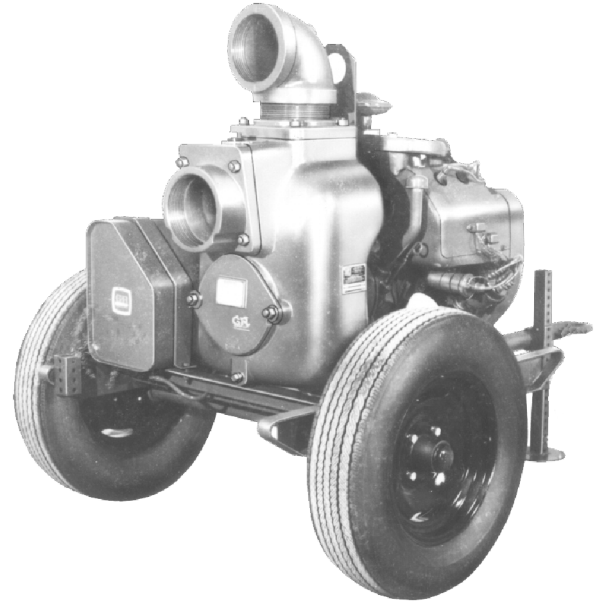
ACDEU

Self Priming Centrifugal Pump



Gasoline Engine Driven Model 16D-VH4D S/G Size 6" x 6"

Total Head		Capacity Of Pump In U.S. Gallons Per Minute (GPM) At Continuous Performance				
P.S.I.	Feet					
46.8	108	115	115	115	115	115
43.4	100	290	290	290	290	290
39.0	90	405	440	440	440	440
34.7	80	450	560	560	560	560
30.3	70	460	650	680	680	680
26.0	60	520	695	785	795	795
21.7	50	540	730	850	890	890
17.3	40	560	755	895	980	980
13.0	30	580	775	930	1060	1070
8.7	20	595	795	960	1100	1140
Suction Lift		25'	20'	15'	10'	5'



Shown with Optional Wheel Kit



PUMP SPECIFICATIONS

Size: 6" X 6" NPT (152,4 mm X 152,4 mm) Female.

Pump Casing: Aluminum Alloy 356-T6. Maximum Operating Pressure 74 psi (510 kPa).*

Open Type, Three Vane Impeller: Gray Iron No. 30. Handles 2 5/8" (66,7 mm) Diameter Spherical Solids.

Replaceable Wear Plate: Carbon Steel Grade C-1045.

Removable Cover Plate: Aluminum Alloy 356-T6.

Intermediate Bracket: Gray Iron No. 30.

Seal: Double, Grease-Lubricated, with Spring Loaded Grease Cup. Sintered Bronze Stationary Seal Seats. Steel Rotating Faces. Neoprene Packing Rings. Maximum Temperature of Liquid Pumped, 110°F (43°C).* Maximum Suction Pressure 10 psi (69 kPa).*

Seal Liner: Copper Alloy C26000.

Flap Valve: Buna-N with Nylon Reinforcement and Carbon Steel Grade C-1045.

Flanges: Aluminum Alloy 356-T6.

Gaskets: Vegetable Fiber and Cork with Nitrile Binder (NC710).

Hoisting Bail.

Skid Base.

90° Discharge Elbow.

Strainer.

Optional Equipment: Battery. Two Wheel Truck Assembly with P-225/75R15 Pneumatic Tires.

*Consult Factory for Applications Exceeding Maximum Pressure and/or Temperature Indicated.

ENGINE SPECIFICATIONS

Model: Wisconsin VH4D.

Type: Four Cylinder, Four Cycle, Air Cooled, Gasoline Engine.

Displacement: 107.7 Cu. In. (1765 cc).

Governor: Mechanical Flyball.

Lubrication: Pressure System.

Air Cleaner: Oil Bath.

Oil Reservoir: 4 U.S. Qts. (3,8 Liters).

Fuel Tank: 11 U.S. Gallons. (41,6 Liters).

Full Load Operating Time: 3.9 Hrs.

Starter: 12V Electric.

Standard Features: Muffler. Panel Assembly Includes: Ignition Switch, Ammeter, Manual Throttle and Choke Control..

WISCONSIN PUBLISHED PERFORMANCE:

Max. Continuous 24.0 BHP (17,9 kW) @ 2800 RPM

Max. Dynamic 30.0 BHP (22,3 kW) @ 2800 RPM



THE GORMAN-RUPP COMPANY • MANSFIELD, OHIO

GORMAN-RUPP OF CANADA LIMITED • ST. THOMAS, ONTARIO, CANADA

Specifications Subject to Change Without Notice

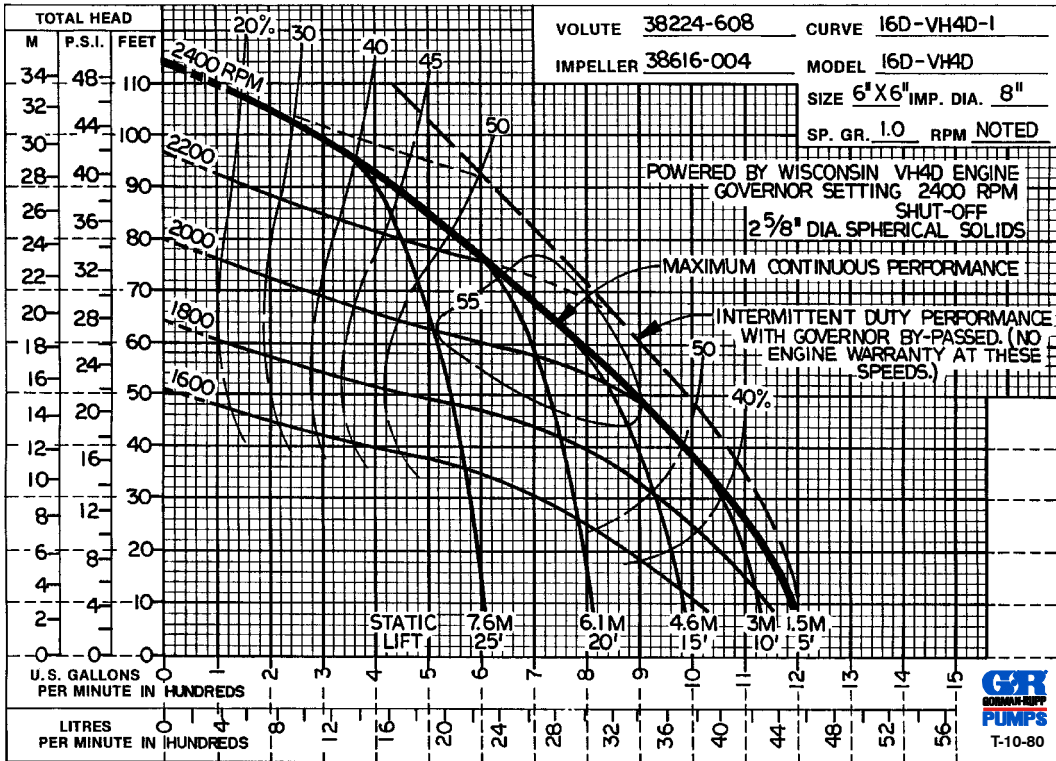
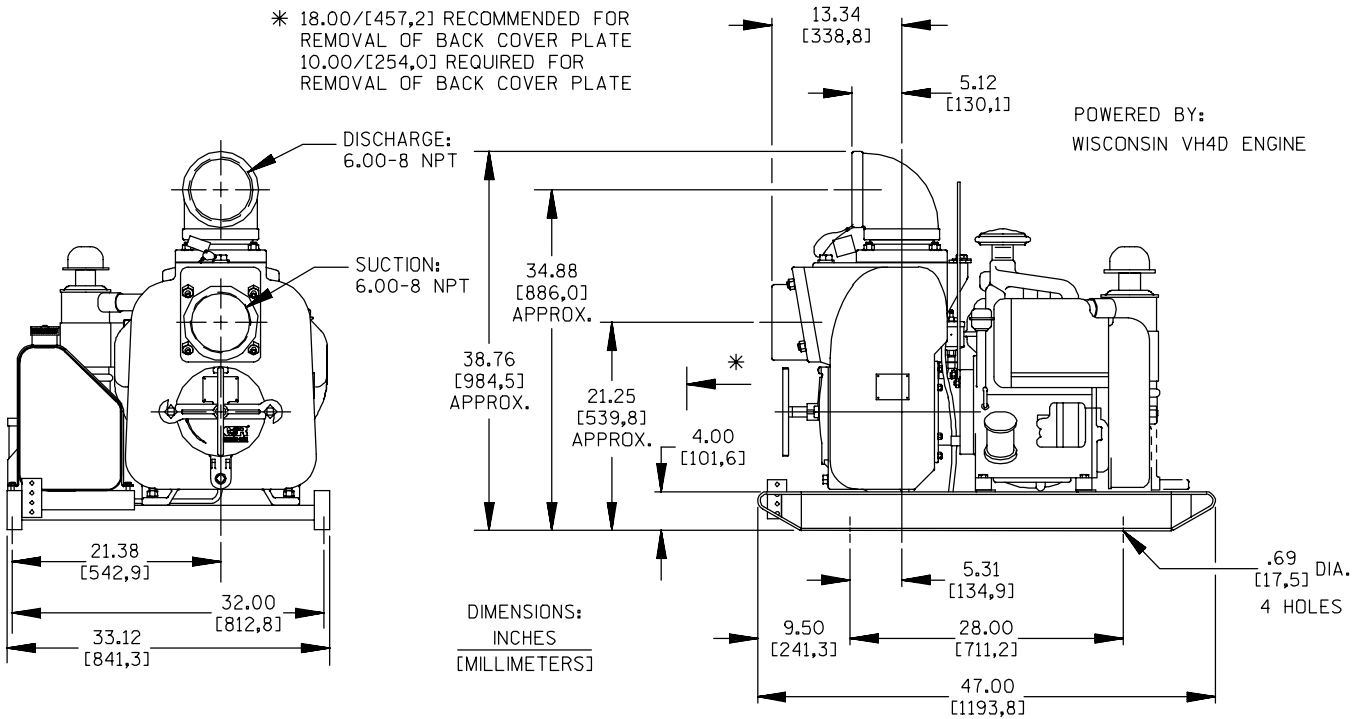
Printed in U.S.A.

Specification Data

APPROXIMATE
DIMENSIONS and
WEIGHTS

SKID BASE **2-WHEEL**
NET WEIGHT: 715 LBS. [324,3 KG.] 933 LBS. [423,2 KG.]
SHIPPING WEIGHT: 841 LBS. [381,5 KG.] 933 LBS. [423,2 KG.]
EXPORT CRATE: 61.3 CU. FT. [1,74 CU. M.]

SECTION 45, PAGE 1255



THE GORMAN-RUPP COMPANY • MANSFIELD, OHIO

GORMAN-RUPP OF CANADA LIMITED • ST. THOMAS, ONTARIO, CANADA

Specifications Subject to Change Without Notice

Printed in U.S.A.