



Self Priming Centrifugal Pump

Model 16D60-F3L

Size 6" x 6"



| Total Head | | Capacity of Pump in U.S. Gallons per Minute (GPM) at Continuous Performance | | | |
|--------------|------|---|-----|-----|------|
| P.S.I. | Feet | | | | |
| 46.8 | 108 | 220 | 220 | 220 | 220 |
| 43.4 | 100 | 338 | 460 | 460 | 460 |
| 39.0 | 90 | 390 | 595 | 700 | 710 |
| 34.7 | 80 | 430 | 630 | 795 | 850 |
| 30.3 | 70 | 460 | 680 | 830 | 942 |
| 26.0 | 60 | 495 | 711 | 860 | 980 |
| 21.7 | 50 | 510 | 730 | 985 | 1005 |
| 17.3 | 40 | 535 | 748 | 910 | 1040 |
| 13.0 | 30 | 550 | 760 | 930 | 1060 |
| Suction Lift | | 25' | 20' | 15' | 10' |



Shown w/Optional Wheel Kit

PUMP SPECIFICATIONS

Size: 6" x 6" (152 mm x 152 mm) NPT - Female.

Casing: Gray Iron 30.

Maximum Operating Pressure 78 psi (538 kPa)*.

Semi-Open, Three Vane Impeller: Gray Iron 30.

Handles 2 5/8" (66,5 mm) Diameter Spherical Solids.

Impeller Shaft: Alloy Steel 4150.

Replaceable Wear Plate: Carbon Steel C1015.

Removable Cover Plate: Gray Iron 30. 22 lbs. (10 kg.).

Intermediate: Gray Iron 30.

Seal Plate: Gray Iron 30.

Seal: Type 31, Mechanical, Self-Lubricated. Silicon Carbide Rotating and Stationary Faces. Fluorocarbon Elastomers (DuPont Viton® or Equivalent). Stainless Steel 316 Cage and Spring. Maximum Temperature of Liquid Pumped, 160°F (71°C).*

Seal Sleeve: Alloy Steel 4130.

Flap Valve: Buna-N w/Nylon Reinforcement and Steel.

Radial Bearing: Open Single Row Ball.

Thrust Bearing: Open Double Row Ball.

Bearing Lubrication: SAE 30 Non-Detergent Oil.

Suction Flange: Gray Iron 30.

Gaskets: Cork, Vegetable Fiber and PTFE.

Hardware: Standard Plated Steel.

Standard Equipment: Hoisting Bail. 90° Discharge Elbow. Combination Skid Base w/Fuel Tank. Strainer. Oil Level Sight Gauge.

Optional Equipment: Battery. High Speed (55 MPH/89 KM/H) Single Axle Pneumatic-Tired Wheel Kit w/wo DOT-Approved Lights and Electric Brakes. [Tandem Axle Over-the-Road Trailer](#).

*Consult Factory for Applications Exceeding Maximum Pressure and/or Temperature Indicated.



ENGINE SPECIFICATIONS

Model: Deutz D914L3.

EPA Tier: Interim Tier 4.

Type: Three Cylinder, Four Cycle, Air Cooled Diesel Engine.

Displacement: 197.4 Cu. In. (3,24 Liters).

Lubrication: Forced Circulation.

Air Cleaner: Oil Bath.

Fuel Tank: 61 U.S. Gallons (230,9 Liters).

Full Load Operating Time: 31.1 Hours.

Starter: 12 Volt Electric.

Standard Features: High Oil Temperature, Low Oil Pressure, V-Belt, Alternator and Start Failure Safety Shut Down Switches/Indicators. Fuel Level Gauge. Throttle Control. Instrument Panel Includes: Temperature Gauge, Oil Pressure Gauge, Ammeter, Hourmeter, Tachometer, Manual/Stop Key Switch, 15 Amp Fuse. Muffler w/Guard and Weather Cap.

DEUTZ PUBLISHED PERFORMANCE:

Maximum Gross Continuous B.H.P.

54.9 (41 kW) @ 2300 RPM



GORMAN-RUPP PUMPS

www.grpumps.com

Specifications Subject to Change Without Notice

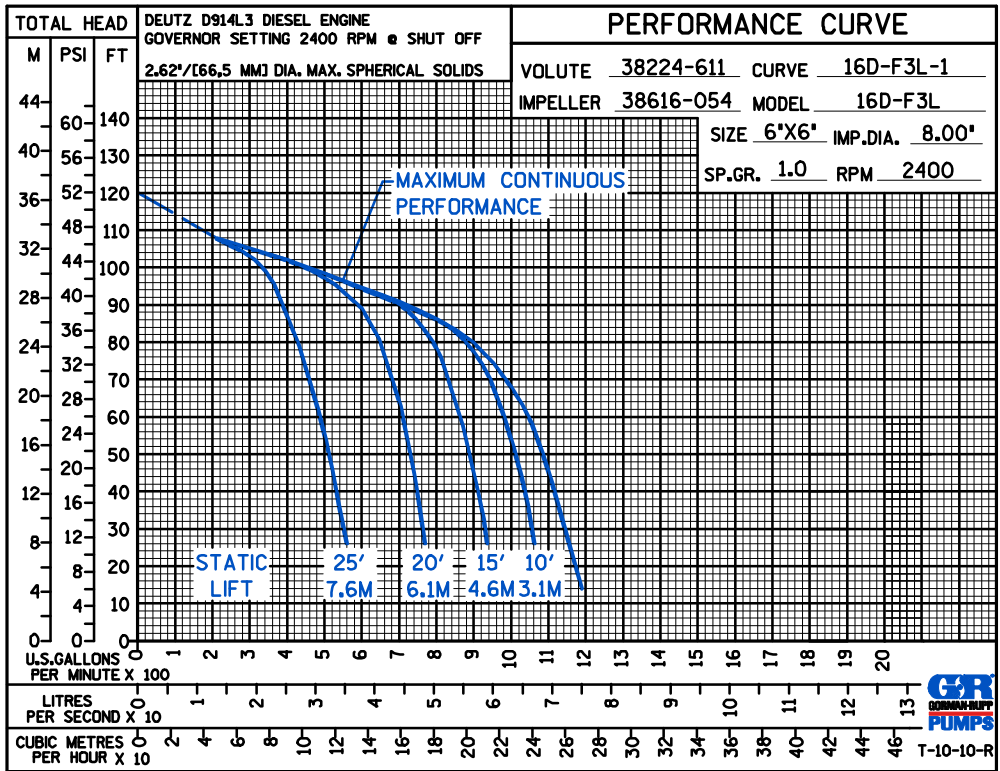
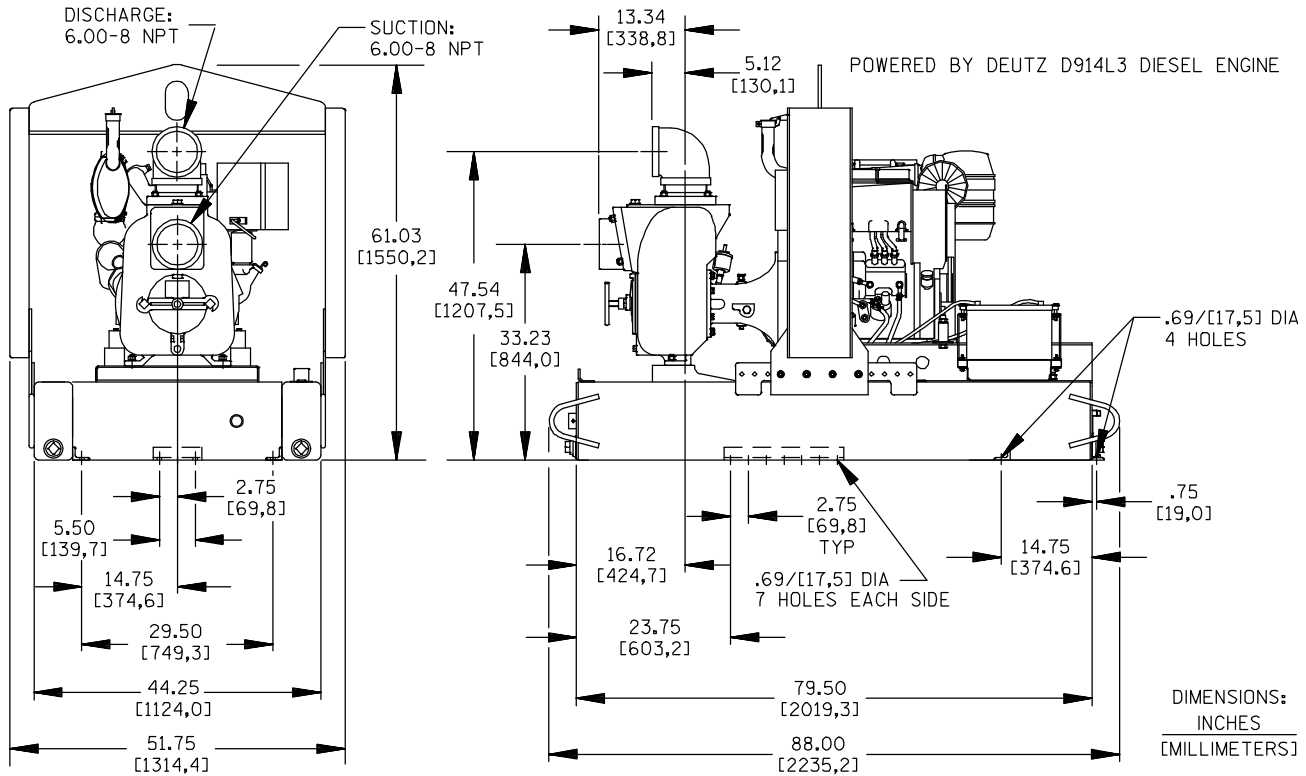
Printed in U.S.A.

Specification Data

APPROXIMATE DIMENSIONS and WEIGHTS

| | | |
|--------------------------|--------------------------|------------------------|
| | SKID BASE | 2-WHEEL |
| NET WEIGHT: | 2340 LBS. [1061,4 KG.] | 2700 LBS. [1224,7 KG.] |
| SHIPPING WEIGHTS: | 2490 LBS. [1129,4 KG.] | 2700 LBS. [1224,7 KG.] |
| EXPORT CRATE: | 211 CU. FT. [6,0 CU. M.] | |

SECTION 45, PAGE 1251



GORMAN-RUPP PUMPS

www.grpumps.com

Specifications Subject to Change Without Notice

Printed in U.S.A.