

Self Priming Centrifugal Pump w/Autostart

**Super
T SERIES**
VARIOUS PATENTS APPLY

Model T4A60S-4LE2T FT4

Size 4" x 4"



Total Head		Capacity Of Pump In U.S. Gallons Per Minute (GPM) At Continuous Performance				
P.S.I.	Feet	300	300	300	300	300
54.6	126	300	300	300	300	300
43.4	100	373	495	622	680	680
34.7	80	380	505	632	720	792
26.0	60	388	512	642	725	805
17.3	40	395	520	650	730	815
8.7	20	405	530	660	740	825
Suction Lift		25'	20'	15'	10'	5'

PUMP SPECIFICATIONS

Size: 4" x 4" (101 mm x 101 mm) NPT - Female.

Casing: Gray Iron 30.

Maximum Operating Pressure 98 psi (676 kPa).*

Semi-Open Type, Two Vane Impeller: Ductile Iron 65-45-12.

Handles 3" (76,2 mm) Diameter Spherical Solids.

Impeller Shaft: Stainless Steel 17-4 PH.

Replaceable Wear Plate: Carbon Steel ASTM A36.

Removable Adjustable Cover Plate: Gray Iron 30.

Removable Inspection Cover Plate: Gray Iron 30; 12 lbs. (5,4 kg.).

Seal Plate: Gray Iron 30.

Seal: Cartridge Type, Mechanical, Oil-Lubricated, Double Floating, Self-Aligning. Silicon Carbide Rotating and Stationary Faces. Stainless Steel 316 Stationary Seat. Fluorocarbon Elastomers (DuPont Viton® or Equivalent). Stainless Steel 18-8 Cage and Spring. Maximum Temperature of Liquid Pumped 160°F (71°C).*

Flap Valve: Neoprene w/Steel Reinforcement.

Shaft Sleeve: Alloy Steel 4130.

Intermediate: Gray Iron 30.

Radial Bearing: Open Single Ball.

Thrust Bearing: Open Double Ball.

Bearing Lubrication: SAE 30 Non-Detergent Oil.

Flange: Gray Iron 30.

Gaskets: Compressed Synthetic Fibers and PTFE.

O-Rings: Buna-N, PTFE, Fluorocarbon Elastomers (DuPont Viton® or Equivalent).

Hardware: Standard Plated Steel.

Brass Pressure Relief Valve.

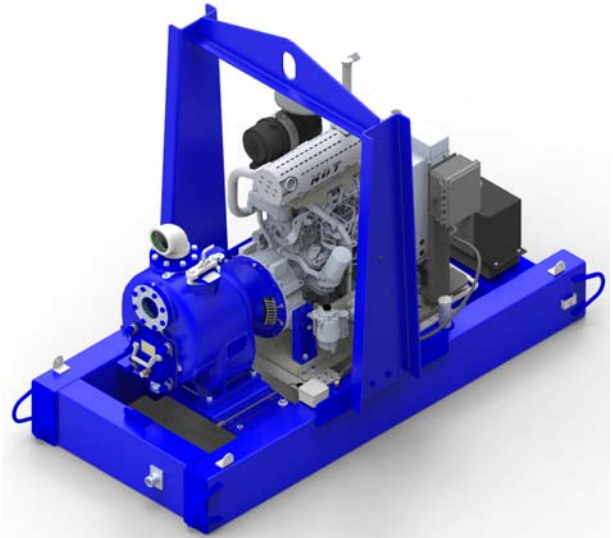
Bearing and Seal Cavity Oil Level Sight Gauges.

*Consult Factory for Applications Exceeding Maximum Pressure and/or Temperature Indicated.

Standard Equipment: Hoisting Bail. 90° Discharge Elbow. Strainer. Combination Skid Base w/Fuel Tank. [Full Feature Control Panel](#) [Single Ball Type Float Switch](#).**

**50 Ft. (15 m) Standard Length; Dual Switches and Alternate Cable Lengths Available From the Factory.

Optional Equipment: Battery. G-R Hard Iron Impeller and Seal Plate. Hardened Steel Wear Plate. High Speed (55 MPH/89 KM/H) Single Axle Pneumatic-Tired Wheel Kit w/wo DOT-Approved Lights and Electric Brakes. [Tandem Axle Over-the-Road Trailer](#) (Meets DOT Requirements) Liquid Level Transducer.



ENGINE SPECIFICATIONS

Model: Isuzu 4LE2T.

EPA Tier: Final Tier 4.

Type: Four Cylinder, Four Cycle, Turbocharged, Charge Air Cooled, Liquid Cooled Diesel Engine.

Displacement: 134 Cu. In. (2,2 Liters).

Lubrication: Forced Circulation.

Air Cleaner: Dry Type.

Fuel Tank: 70 U.S. Gals. (265 Liters).

Full Load Operating Time: 36.6 Hrs.

Starter: 12V Electric.

Standard Features: Muffler w/Weather Cap. DOC Exhaust After-Treatment System.

Engine Control Features: Padlockable Box with Throttle Control, Tachometer, Coolant Temperature, Oil Pressure, Voltage and Overstart Indicators/Shutdowns. Manual/Stop/Auto Keyswitch. Audible Startup Warning Delay. Fuel Level Display/Alarm/Shutdown.

ISUZU PUBLISHED PERFORMANCE:

Maximum Gross Continuous BHP
48 (35.8 kW) @ 2400 RPM



GORMAN-RUPP PUMPS

www.grpumps.com

Specifications Subject to Change Without Notice

Printed in U.S.A.

Specification Data

SECTION 45, PAGE 1247

APPROXIMATE DIMENSIONS and WEIGHTS

NET WEIGHT:

SKID BASE

2560 LBS. (1161 KG.)

SHIPPING WEIGHT:

2830 LBS. (1284 KG.)

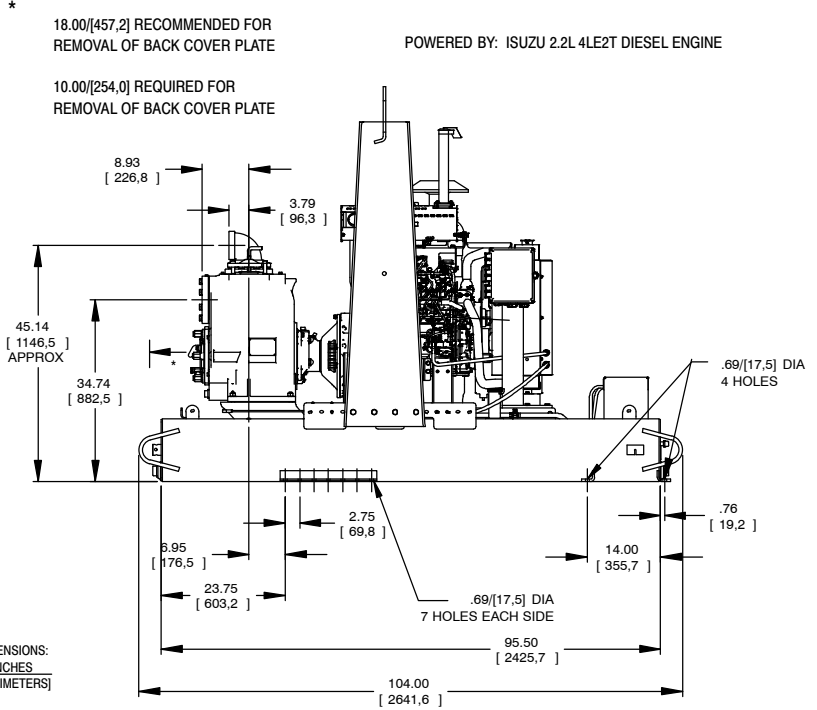
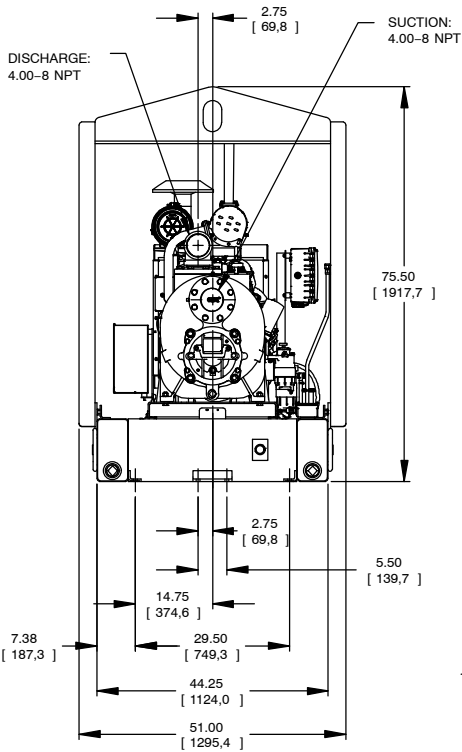
EXPORT CRATE SIZE:

261 CU. FT. (7,4 CU. M.)

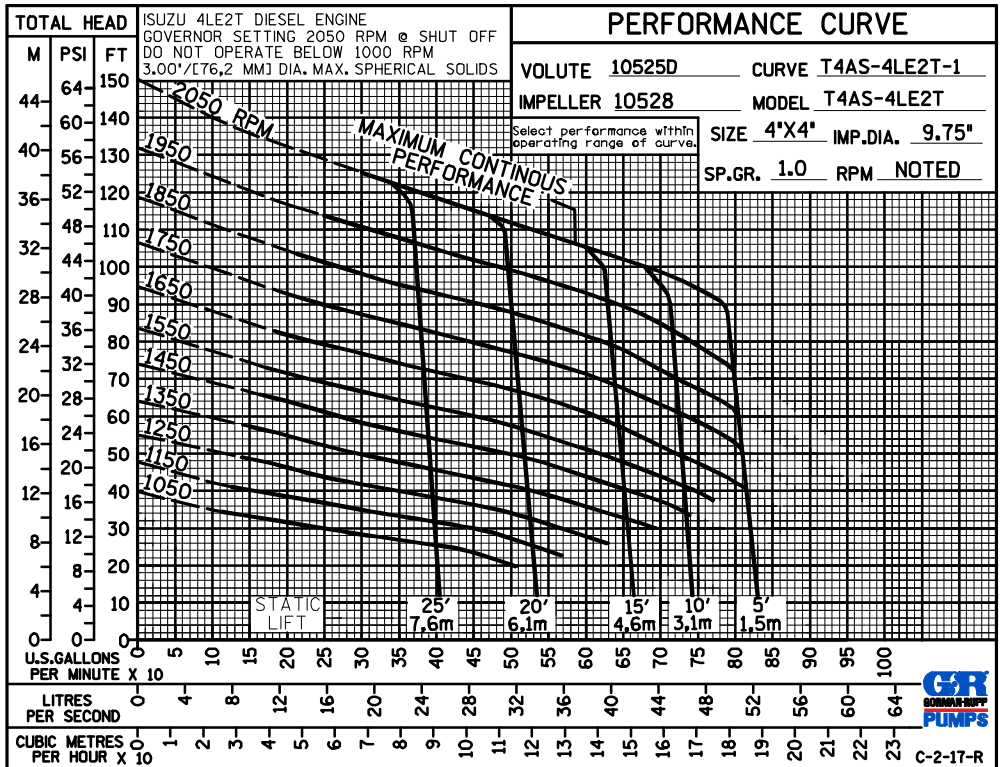
2-WHEEL

3030 LBS. (1374 KG.)

3030 LBS. (1374 KG.)



DIMENSIONS:
INCHES
[MILLIMETERS]



GORMAN-RUPP PUMPS

www.grpumps.com

Specifications Subject to Change Without Notice

Printed in U.S.A.