



Diesel Engine Driven Self Priming Centrifugal Pump

Model 14A2-TS2 S/G

Size 4" x 4"



33MT

Total Head		Capacity of Pump in U.S. Gallons per Minute (GPM) at Continuous Performance				
P.S.I.	Feet					
49.0	113	125	125	125	125	125
47.7	110	165	165	165	165	165
43.4	100	267	300	300	300	300
39.0	90	300	408	440	440	440
34.7	80	312	442	525	555	555
30.3	70	318	460	551	615	643
26.0	60	322	466	562	636	690
21.7	50	330	471	570	643	708
17.3	40	332	477	574	650	718
13.0	30	338	480	580	655	724
Suction Lift		25'	20'	15'	10'	5'



PUMP SPECIFICATIONS

- Size:** 4" x 4" (102 mm x 102 mm) NPT - Female.
 - Casing:** Gray Iron No. 30.
Maximum Operating Pressure 81 psi (558 kPa).*
 - Semi-Open, Two Vane Impeller:** Ductile Iron No. 65-45-12.
Handles 2" (51 mm) Diameter Spherical Solids.
 - Stub Shaft:** Ductile Iron No. 120-90-02.
 - Replaceable Wear Plate:** Carbon Steel No. 1026.
 - Removable Cover Plate:** Gray Iron No. 30; 22 lbs. (10 kg).
 - Intermediate:** Ductile Iron No. 65-45-12.
 - Seal Plate:** Gray Iron No. 30.
 - Seal:** Double, Grease-Lubricated with Spring Loaded Grease Cup. Sintered Bronze Stationary Seal Seats. Steel Rotating Faces. Maximum Temperature of Liquid Pumped, 110°F (43°C). Maximum Suction Pressure 10 psi (69 kPa).*
 - Seal Liner:** Copper Alloy No. C26000.
 - Flap Valve:** Buna-N ^W/Nylon Reinforcement; Gray Iron No. 30.
 - Suction Flange:** Gray Iron No. 30.
 - Gaskets:** Vegetable Fiber, PTFE, and Rubber.
 - Hardware:** Standard Plated Steel.
 - Standard Equipment:** Hoisting Bail. Skid Base. 90° Ductile Iron Discharge Elbow. Strainer.
 - Optional Equipment:** Battery. Two-Wheel Truck Assembly with P225/75R15 Pneumatic Tires.
- *Consult Factory for Applications Exceeding Maximum Pressure and/or Temperature Indicated.*

WARNING!

Do not use in explosive atmosphere or for pumping volatile flammable liquids.

ENGINE SPECIFICATIONS

- Model:** Lister-Petter TR2.
- Type:** Two Cylinder, Four Cycle, Air Cooled, Diesel Engine.
- Displacement:** 94.3 Cu. In. (1,55 liter).
- Governor:** Variable Speed Control.
- Air Cleaner:** Dry Type; Medium Duty.
- Oil Reservoir:** 4.2 U.S. Qts. (4,0 liter).
- Fuel Tank:** 11 U. S. Gals. (41,6 liter).
- Full Load Operating Time:** 11.6 Hrs.
- Starter:** 12V Electric. Detachable Hand Crank.
- Standard Equipment:** Oil Cup. Cold Start Aid. Exhaust Silencer. Instrument Panel ^W/Starter Button and Ammeter.

LISTER-PETTER PUBLISHED PERFORMANCE:
Maximum Continuous 23.2 BHP (17,3 kW) @ 2500 RPM



THE GORMAN-RUPP COMPANY • MANSFIELD, OHIO

GORMAN-RUPP OF CANADA LIMITED • ST. THOMAS, ONTARIO, CANADA
www.gormanrupp.com

Specifications Subject to Change Without Notice

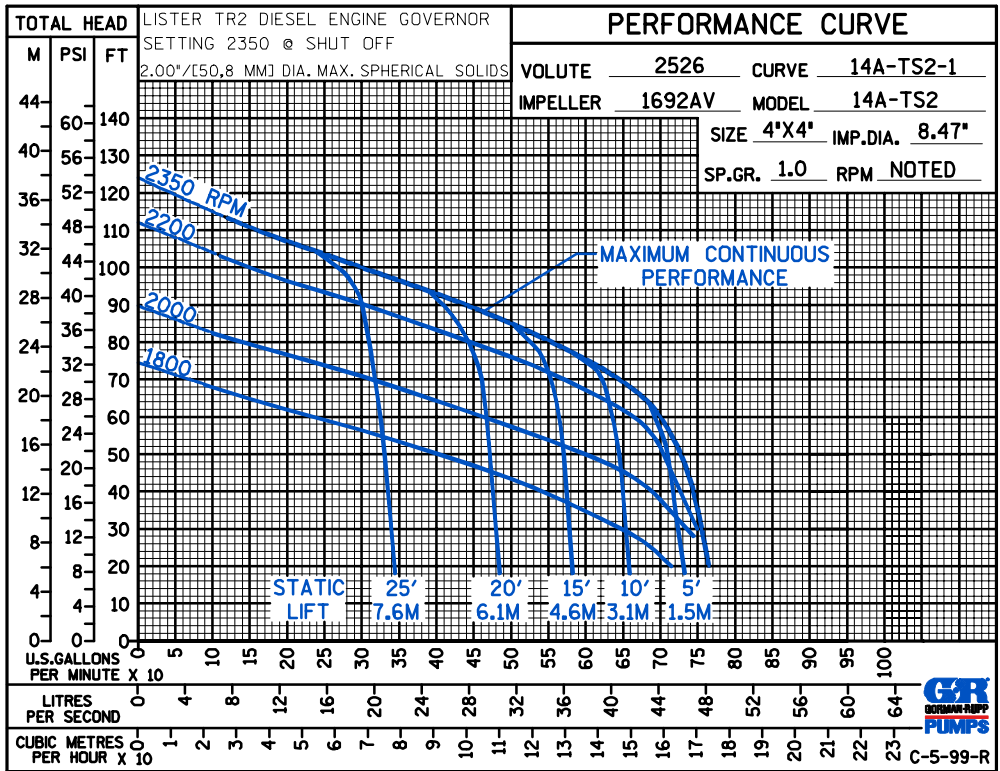
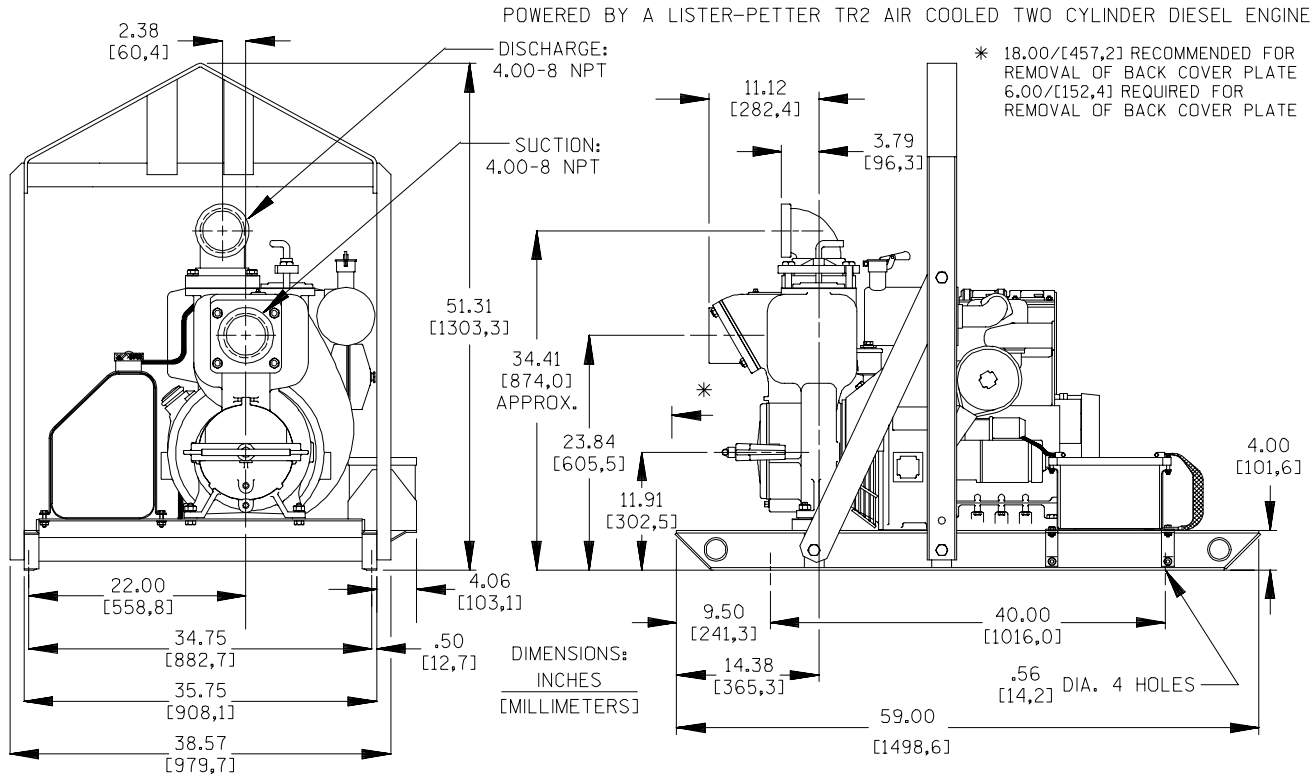
Printed in U.S.A.

Specification Data

SECTION 45, PAGE 950

APPROXIMATE
DIMENSIONS and WEIGHTS

	SKID BASE	2-WHEEL
NET WEIGHT:	960 LBS. (436 KG.)	1156 LBS. (524 KG.)
SHIPPING WEIGHT:	1010 LBS. (458 KG.)	1156 LBS. (524 KG.)
EXPORT CRATE:	65.0 CU. FT. (1,8 CU. M.)	80 CU. FT. (2,3 CU. M.)



THE GORMAN-RUPP COMPANY • MANSFIELD, OHIO

GORMAN-RUPP OF CANADA LIMITED • ST. THOMAS, ONTARIO, CANADA

Specifications Subject to Change Without Notice

Printed in U.S.A.