

ACDE

# Self Priming Centrifugal Pump



Gasoline Engine Driven  
Model 14A2-VH4D S/G

Size 4" x 4"

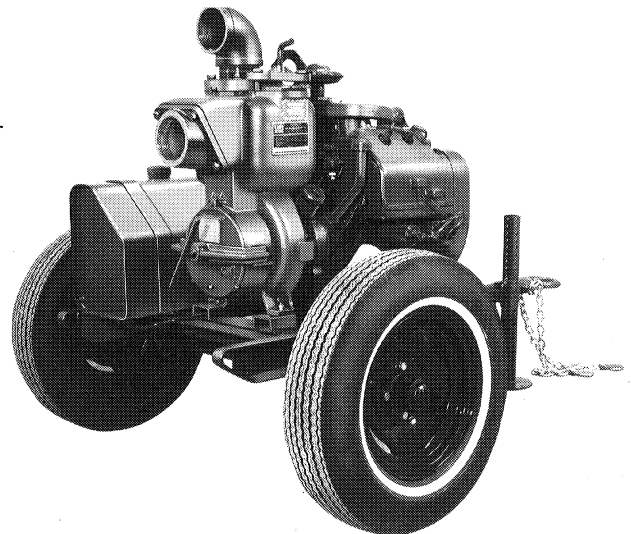
CERTIFIED PERFORMANCE



The Manufacturer of this pump certifies that it was manufactured in accordance with the standards of the Contractors Pump Bureau.

33MT

Total Head		Capacity of Pump in U.S. Gallons per Minute (GPM) at Continuous Performance				
P.S.I.	Feet					
52.0	120	120	120	120	120	120
47.7	110	240	270	270	270	270
43.4	100	273	400	425	425	425
39.0	90	294	428	510	545	545
34.7	80	309	445	534	608	650
30.3	70	319	456	550	630	675
26.0	60	325	462	560	640	690
21.7	50	330	469	567	648	703
17.3	40	334	472	572	651	712
13.0	30	340	476	578	656	720
<b>Suction Lift</b>		<b>25'</b>	<b>20'</b>	<b>15'</b>	<b>10'</b>	<b>5'</b>



## PUMP SPECIFICATIONS

**Size:** 4" x 4" NPT (102 mm x 102 mm) - Female.  
**Casing:** Gray Iron No. 30. Maximum Operating Pressure 86 psi (6,0 kg/cm<sup>2</sup>).\*  
**Open Type, Two Vane Impeller:** Ductile Iron No. 60-40-18. Handles 2" (51 mm) Diameter Spherical Solids.  
**Replaceable Wear Plate:** Steel No. 1026.  
**Removable Cover Plate:** Gray Iron No. 30; 26 lbs. (12 kg).  
**Intermediate Bracket:** Gray Iron No. 30.  
**Seal:** Double, Grease-Lubricated, with Spring Loaded Grease Cup. Sintered Bronze Stationary Seal Seats. Steel Rotating Faces. Maximum Temperature of Liquid Pumped, 110°F (43°C). \* Maximum Suction Pressure 10 psi (0,7 kg/cm<sup>2</sup>).  
*\*Consult Factory for Applications Exceeding Maximum Pressure and/or Temperature Indicated.*  
**Seal Liner:** Brass No. 70-30.  
**Flap Valve:** Buna-N <sup>w</sup>/Nylon Reinforcement; Gray Iron No. 30.  
**Flanges:** Gray Iron No. 30.  
**Gaskets:** Vegetable Fiber, PTFE, and Rubber.

**Standard Equipment:** Hoisting Bail. Skid Base. 90° Discharge Elbow. Strainer.

**Optional Equipment:** Battery. Two Wheel Truck Assembly with P195/75R15 Pneumatic Tires.



**WARNING!**

Do not use in explosive atmosphere or for pumping volatile flammable products.

## ENGINE SPECIFICATIONS

**Model:** Wisconsin VH4D.  
**Type:** Four Cylinder, Four Cycle, Air Cooled, Gasoline Engine.  
**Displacement:** 107.7 Cu. In. (1765 cc).  
**Governor:** Mechanical Flyball.  
**Lubrication:** Pressure System.  
**Air Cleaner:** Oil Bath.  
**Oil Reservoir:** 4 U.S. Qts. (3,8 liter).  
**Fuel Tank:** 11 U.S. Gals. (41,6 liter).  
**Full Load Operating Time:** 10.4 Hrs.  
**Starter:** 12V Electric.

**Standard Equipment:** Muffler. Panel Assembly Includes: Manual Throttle Control, Choke Control, Starter Switch, Ignition Switch, and Ammeter.

## WISCONSIN PUBLISHED PERFORMANCE:

Maximum Continuous 24.0 BHP (17,9 kW)  
 @ 2800 RPM  
 Maximum Dynamic 30.0 BHP (22,3 kW)  
 @ 2800 RPM



THE GORMAN-RUPP COMPANY • MANSFIELD, OHIO

GORMAN-RUPP OF CANADA LIMITED • ST. THOMAS, ONTARIO, CANADA

Specifications Subject to Change Without Notice

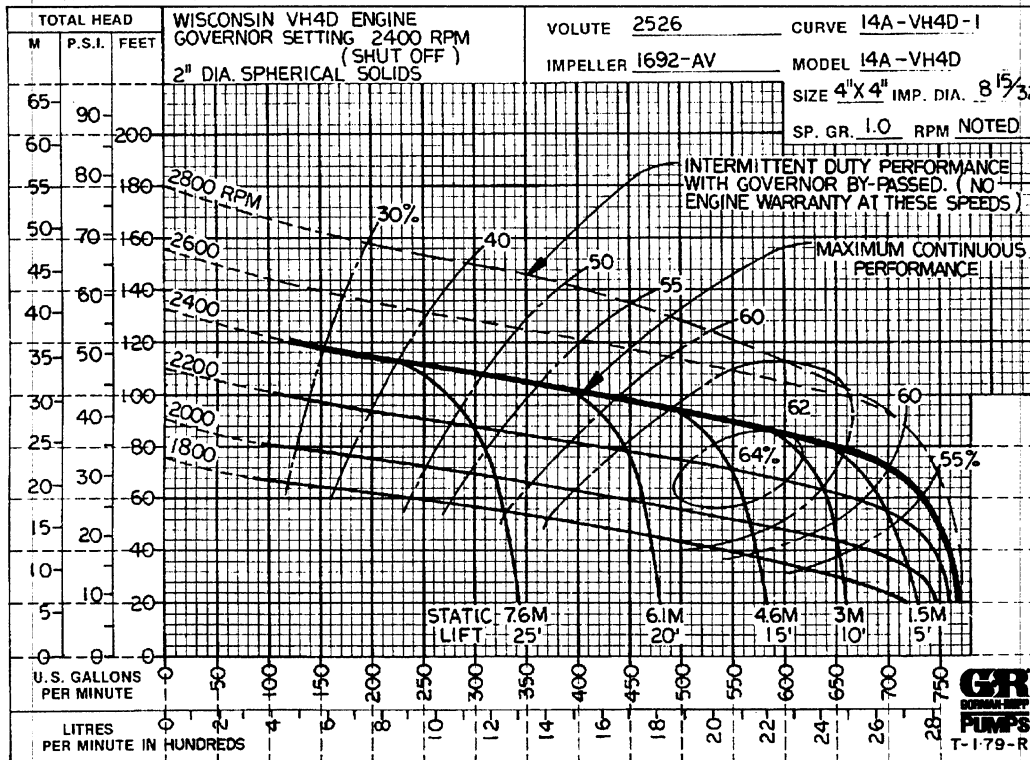
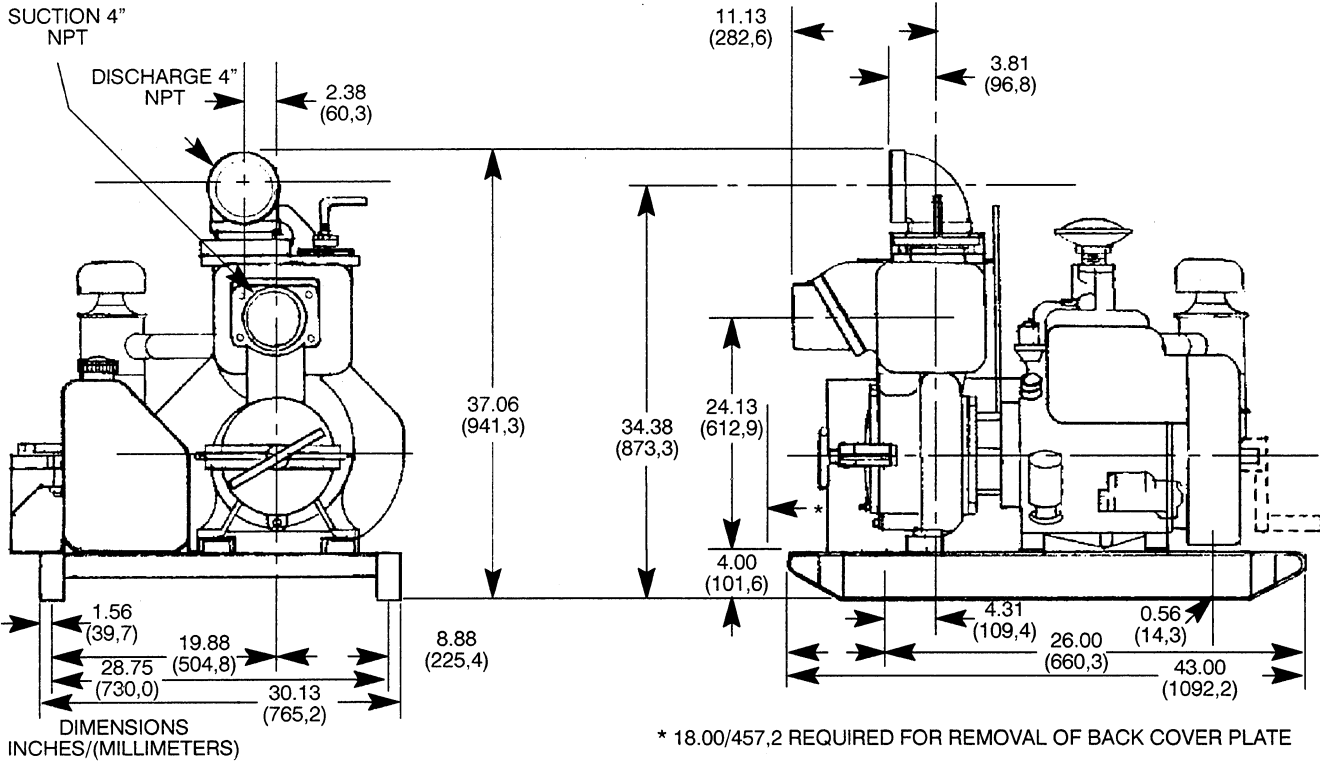
Printed in U.S.A.

**Specification Data**

APPROXIMATE  
DIMENSIONS and WEIGHTS

<b>NET WEIGHT:</b>	<b>SKID BASE</b> 660 LBS. (299 KG.)	<b>2-WHEEL</b> 935 LBS. (424 KG.)
<b>SHIPPING WEIGHT:</b>	760 LBS. (345 KG.)	1035 LBS. (469 KG.)
<b>EXPORT CRATE:</b>	49 CU. FT. (1,4 CU. M.)	65 CU. FT. (1,8 CU. M.)

**SECTION 45, PAGE 900**



**THE GORMAN-RUPP COMPANY • MANSFIELD, OHIO**

GORMAN-RUPP OF CANADA LIMITED • ST. THOMAS, ONTARIO, CANADA

Specifications Subject to Change Without Notice

Printed in U.S.A.