

Diesel Engine Driven

# Self Priming Centrifugal Pump

Model 14D52-1B50E FT4 S/G

Size 4" x 4"



Total Head		Capacity Of Pump In U.S. Gallons Per Minute (GPM) At Continuous Performance				
P.S.I.	Feet					
23.8	55	60	60	60	60	60
21.7	50	117	117	117	117	117
17.3	40	163	244	272	272	272
13.0	30	175	269	340	380	380
8.7	20	178	276	360	437	466
4.3	10	180	279	367	447	494
<b>Suction Lift</b>		<b>25'</b>	<b>20'</b>	<b>15'</b>	<b>10'</b>	<b>5'</b>



## PUMP SPECIFICATIONS

**Size:** 4" x 4" (102 mm x 102 mm) NPT - Female.**Casing:** Gray Iron 30

Maximum Operating Pressure 38 psi (262 kPa).\*

**Semi-Open Type, Two Vane Impeller:** Ductile Iron 65-45-12.  
Handles 2" (50,8 mm) Diameter Spherical Solids.**Replaceable Wear Plate:** Carbon Steel ASTM A36.**Removable Cover Plate:** Gray Iron 30 ASTM A48**Shaft Sleeve:** Alloy Steel 4130.**Intermediate Bracket:** Gray Iron 30 ASTM A48.**Seal:** Type 31, Mechanical, Self Lubricated, Silicon Carbide Rotating and Stationary Faces. Fluorocarbon Elastomers (DuPont Viton® or Equivalent). Stainless Steel 304 Cage and Spring. Maximum Temperature of Liquid Pumped 160°F (71°C).\***Flap Valve:** Buna-N <sup>w</sup>/Nylon Reinforcement; Gray Iron 30.**Suction Flange:** Gray Iron 30 ASTM A48.**Gaskets:** Cork with Nitrile Binder (NC710).**Hardware:** Standard Plated Steel.**Standard Equipment:** Roll Cage with Rubber Feet.  
90° Discharge Elbow.**Optional Equipment:** Battery.  
Wheel Kit <sup>w</sup>/Semi-Pneumatic Tires.*\*Consult Factory for Applications Exceeding Maximum Pressure and/or Temperature Indicated.*

## WARNING!

**Do not use in explosive atmosphere or for pumping volatile flammable liquids.**

## ENGINE SPECIFICATIONS

**Model:** Hatz 1B50E-UX.**EPA Tier:** Final Tier 4.**Type:** Single Cylinder, Four Cycle, Air Cooled, Diesel Engine.**Displacement:** 31.55 Cu. In. (517 cc).**Cylinder:** Aluminum Alloy**Lubrication:** Forced Circulation.**Air Cleaner:** Standard Dry Type.**Fuel Tank:** 14 U.S. Gallons (53,0 Liters).**Full Load Operating Time:** 21 Hrs.**Starter:** 12 Volt Electric.**Ignition System:** Electronic.**Standard Equipment:** Muffler <sup>w</sup>/Guard. Electronic Throttle Control. Oil Fill <sup>w</sup>/Dipstick; Drain Port.

## HATZ PUBLISHED PERFORMANCE:

Maximum Gross Continuous BHP  
10.2 (7,6 kW) @ 3000 RPM

GORMAN-RUPP PUMPS

www.grpumps.com

Specifications Subject to Change Without Notice

Printed in U.S.A.

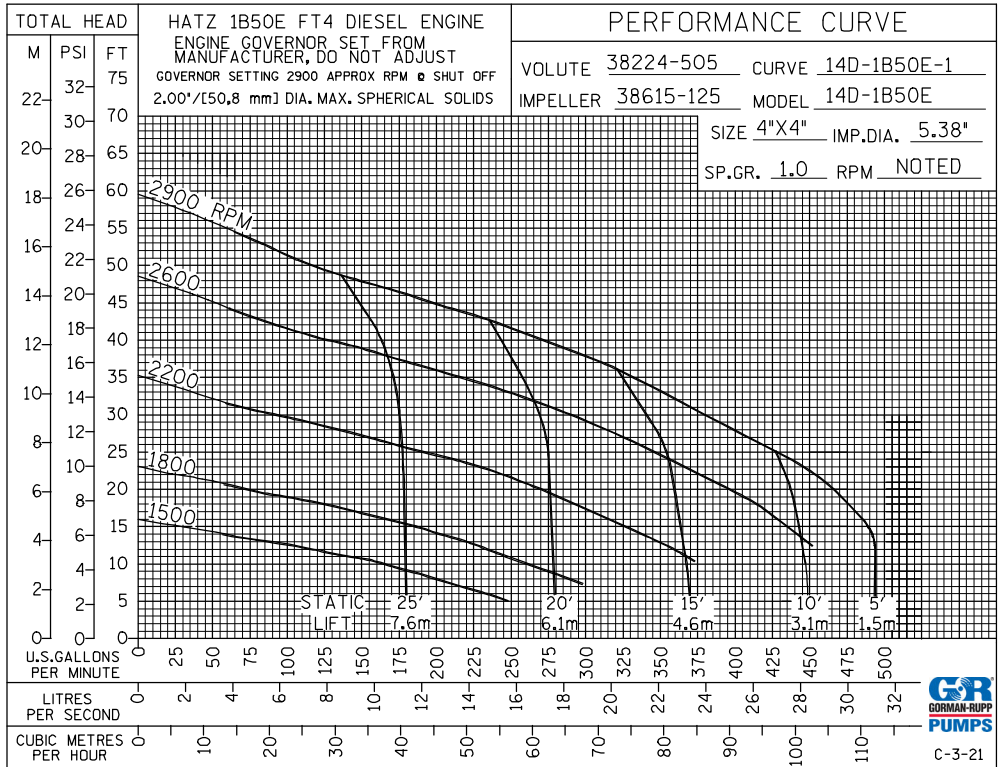
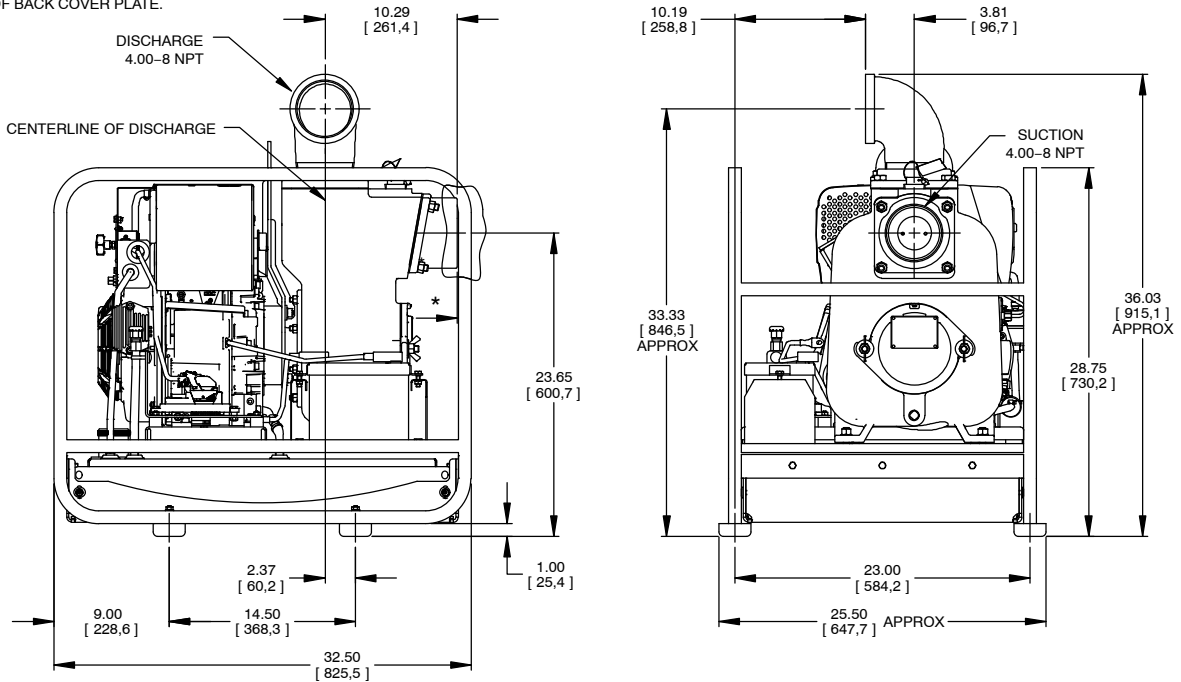
**Specification Data**

**SECTION 45, PAGE 886**

APPROXIMATE  
DIMENSIONS and WEIGHTS

**NET WEIGHT: 390 LBS. (177 KG.)**  
**SHIPPING WEIGHT: 570 LBS. (295 KG.)**  
**EXPORT CRATE: 25 CU. FT. (0,7 CU. M.)**  
**WHEEL KIT ADD 25 LBS. (11.3 KG.);**  
**SHIPPING CRATE (SEPARATE) 3 CU. FT. (0,1 CU. M.)**

\* 18.00/[457,2] RECOMMENDED FOR  
REMOVAL OF BACK COVER PLATE.  
7.50/[190,5] REQUIRED FOR  
REMOVAL OF BACK COVER PLATE.



**GORMAN-RUPP PUMPS**

www.grpumps.com

Specifications Subject to Change Without Notice

Printed in U.S.A.