

Diesel Engine Driven

Self Priming Centrifugal Pump

Model 14D52-1B50 FT4 S/G

Size 4" x 4"



Total Head		Capacity Of Pump In U.S. Gallons Per Minute (GPM) At Continuous Performance				
P.S.I.	Feet					
29.5	68	65	65	65	65	65
26.0	60	150	150	150	150	150
21.7	50	190	265	280	280	280
17.3	40	200	290	355	368	368
13.0	30	205	302	380	430	430
8.7	20	205	303	390	460	480
4.3	10	205	303	395	470	500
Suction Lift		25'	20'	15'	10'	5'



PUMP SPECIFICATIONS

Size: 4" x 4" (102 mm x 102 mm) NPT - Female.**Casing:** Gray Iron 30

Maximum Operating Pressure 48 psi (331 kPa).*

Semi-Open Type, Two Vane Impeller: Ductile Iron 65-45-12.
Handles 2" (50,8 mm) Diameter Spherical Solids.**Replaceable Wear Plate:** Carbon Steel ASTM A36.**Removable Cover Plate:** Gray Iron 30 ASTM A48**Shaft Sleeves:** Alloy Steel 4130.**Intermediate Bracket:** Gray Iron 30 ASTM A48.**Seal:** Type 31, Mechanical, Self Lubricated, Silicon Carbide Rotating and Stationary Faces. Fluorocarbon Elastomers (DuPont Viton® or Equivalent). Stainless Steel 304 Cage and Spring. Maximum Temperature of Liquid Pumped 160°F (71°C).***Flap Valve:** Buna-N^w/Nylon Reinforcement; Gray Iron 30.**Suction Flange:** Gray Iron 30 ASTM A48.**Gaskets:** Cork with Nitrile Binder (NC710).**Hardware:** Standard Plated Steel.**Standard Equipment:** Roll Cage with Rubber Feet.
90° Discharge Elbow. Strainer.**Optional Equipment:** Battery.
Wheel Kit^w/Semi-Pneumatic Tires.**Consult Factory for Applications Exceeding Maximum Pressure and/or Temperature Indicated.*

WARNING!

Do not use in explosive atmosphere or for pumping volatile flammable liquids.

ENGINE SPECIFICATIONS

Model: Hatz 1B50.**EPA Tier:** Final Tier 4.**Type:** Four Cylinder Air Cooled, Diesel Engine.**Displacement:** 31.55 Cu. In. (517 cc).**Cylinder:** Aluminum Alloy**Lubrication:** Forced Circulation.**Air Cleaner:** Standard Dry Type.**Fuel Tank:** 10 U.S. Gallons (37,9 Liters).**Full Load Operating Time:** 9.8 Hrs.**Starter:** 12 Volt Electric.**Ignition System:** Electronic.**Standard Equipment:** Muffler^w/Guard.
Standard Two Speed Throttle Control. Oil Fill^w/Dipstick; Drain Port.

HATZ PUBLISHED PERFORMANCE:

Maximum Gross Continuous BHP
10.9 (8.1 kW) @ 3000 RPM

GORMAN-RUPP PUMPS

www.grpumps.com

Specifications Subject to Change Without Notice

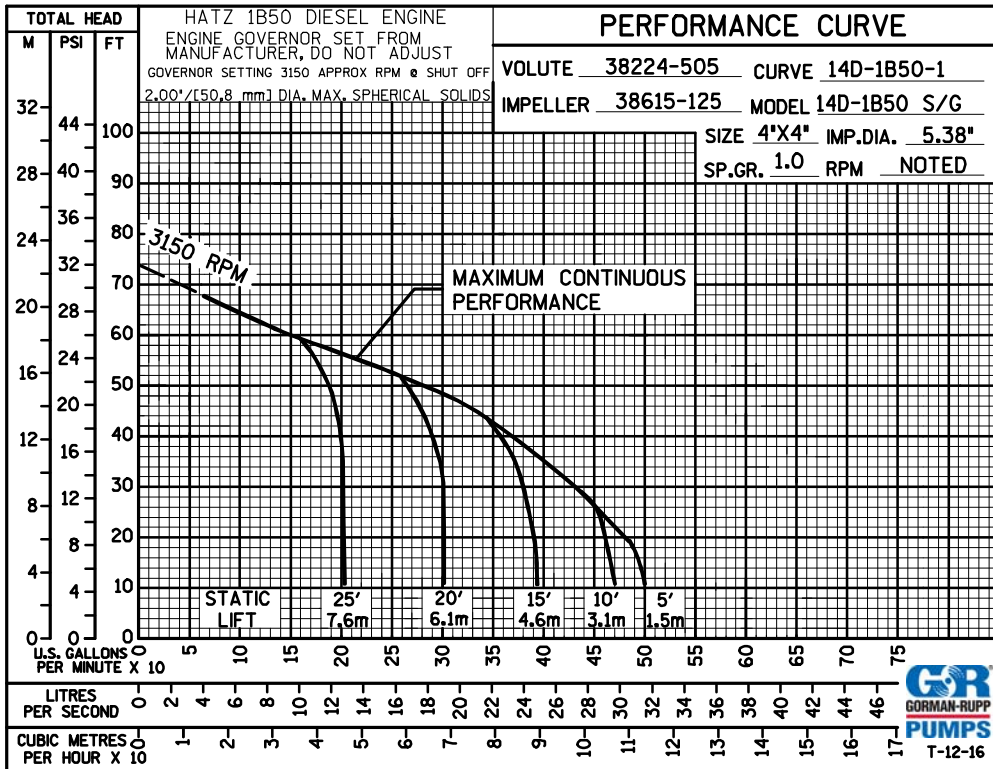
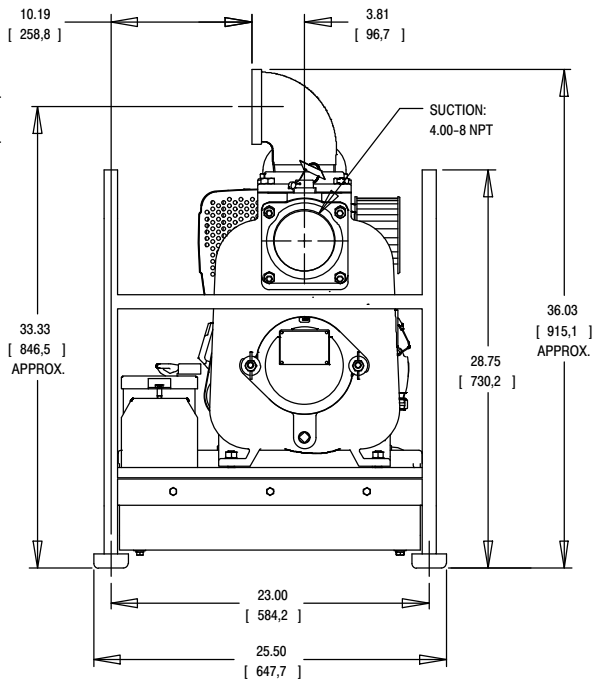
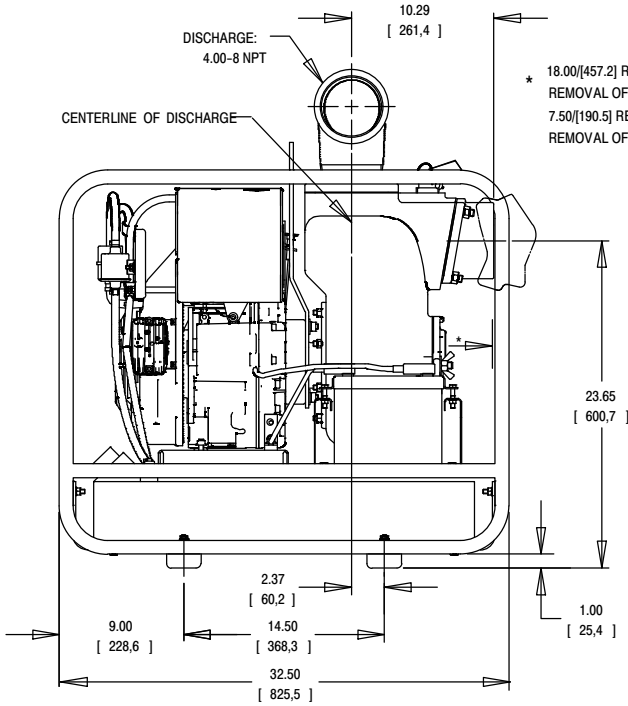
Printed in U.S.A.

Specification Data

SECTION 45, PAGE 885

APPROXIMATE
DIMENSIONS and WEIGHTS

NET WEIGHT: 330 LBS. (150 KG.)
SHIPPING WEIGHT: 385 LBS. (175 KG.)
EXPORT CRATE: 25 CU. FT. (0,7 CU. M.)
WHEEL KIT ADD: 25 LBS. (11.3 KG.);
SHIPPING CRATE (SEPARATE) 3 CU. FT. (0,1 CU. M.)



GORMAN-RUPP PUMPS

www.grpumps.com

Specifications Subject to Change Without Notice

Printed in U.S.A.