

A C D E U



Gasoline Engine Driven Self Priming Centrifugal Pump Models 14D52-CH13 and 14D52-CH13 S/G Size 4" x 4"

Total Head		Capacity of Pump in U.S. Gallons per Minute (GPM) at Continuous Performance			
P.S.I.	Feet				
41.6	96	54	54	54	54
34.7	80	220	220	220	220
26.0	60	275	364	420	420
17.3	40	290	387	473	530
8.7	20	300	400	490	563
Suction Lift		25'	20'	15'	10'



14D52-CH13 S/G (SHOWN)

PUMP SPECIFICATIONS

Size: 4" x 4" (102 mm x 102 mm) NPT - Female.

Casing: Gray Iron 30.

Maximum Operating Pressure 64 psi (441 kPa).*

Semi-Open, Two Vane Impeller: Ductile Iron 65-45-12.

Handles 2" (50,8 mm) Diameter Spherical Solids.

Removable Cover Plate: Gray Iron 30; 12 lbs. (5,5 kg).

Replaceable Wear Plate: Carbon Steel C1015.

Seal: Type 31, Mechanical, Self-Lubricated. Silicon Carbide Rotating and Stationary Faces. Fluorocarbon Elastomers (DuPont Viton® or Equivalent). Stainless Steel 304 Cage and Spring. Maximum Temperature of Liquid Pumped, 160°F (71°C).*

Flap Valve: Buna-N^W/Nylon Reinforcement; Gray Iron 30.

Suction Flange: Gray Iron 30.

Gaskets: Cork.

Hardware: Standard Plated Steel.

Standard Equipment: Roll Cage^W/Rubber Feet.

90° Ductile Iron Discharge Elbow. Strainer.

Optional Equipment: Two Wheel Truck Assembly with 12.00" x 3.00" (305 mm x 76 mm) Semi-Pneumatic Tires. Battery (S/G Model Only).

**Consult Factory for Applications Exceeding Maximum Pressure and/or Temperature Indicated.*


WARNING!

Do not use in explosive atmosphere or for pumping volatile flammable liquids.

ENGINE SPECIFICATIONS

Model: Kohler CH13.

Type: Single Cylinder, Air Cooled, Overhead Valve, Gasoline Engine.

Displacement: 24.3 Cu. In. (398 cc).

Cylinder: Aluminum Alloy^W/Cast Iron Liner.

Governor: Mechanical; Adjustable.

Oil Reservoir: 2.1 U.S. Qts. (1,9 liter).

Air Cleaner: Dual Element^W/Precleaner.

Fuel Tank: 5 U.S. Qts. (4,7 liter).

Full Load Operating Time: 1.1 Hrs.

Starter: Recoil or 12V Electric^W/15A Alternator (S/G Model Only).

Ignition System: Electronic; Solid State.

Standard Equipment: Muffler^W/Guard. Manual Choke and Throttle Control^W/Top Speed Limit. Oil Sentry™ Shut Down (S/G Model Only). Oil Fill^W/Dipstick; Drain Port Each Side.



THE GORMAN-RUPP COMPANY • MANSFIELD, OHIO

GORMAN-RUPP OF CANADA LIMITED • ST. THOMAS, ONTARIO, CANADA

www.grpumps.com

Specifications Subject to Change Without Notice

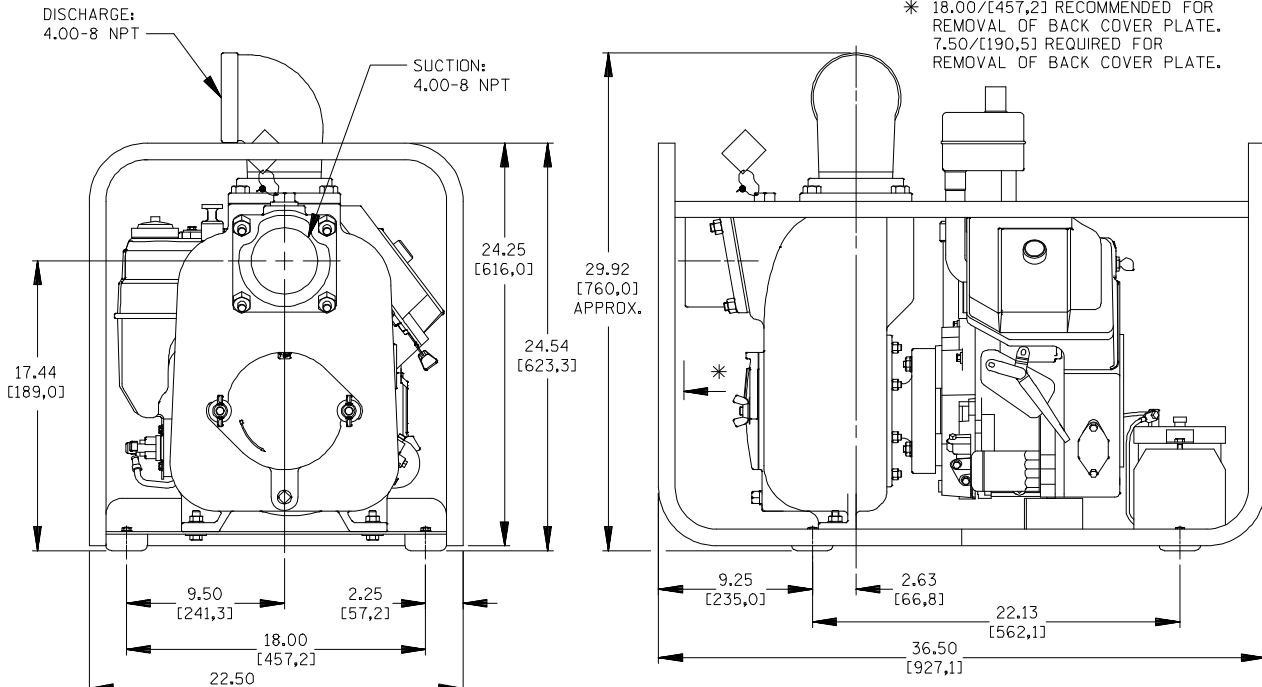
Printed in U.S.A.

Specification Data

SECTION 45, PAGE 830

APPROXIMATE DIMENSIONS and WEIGHTS

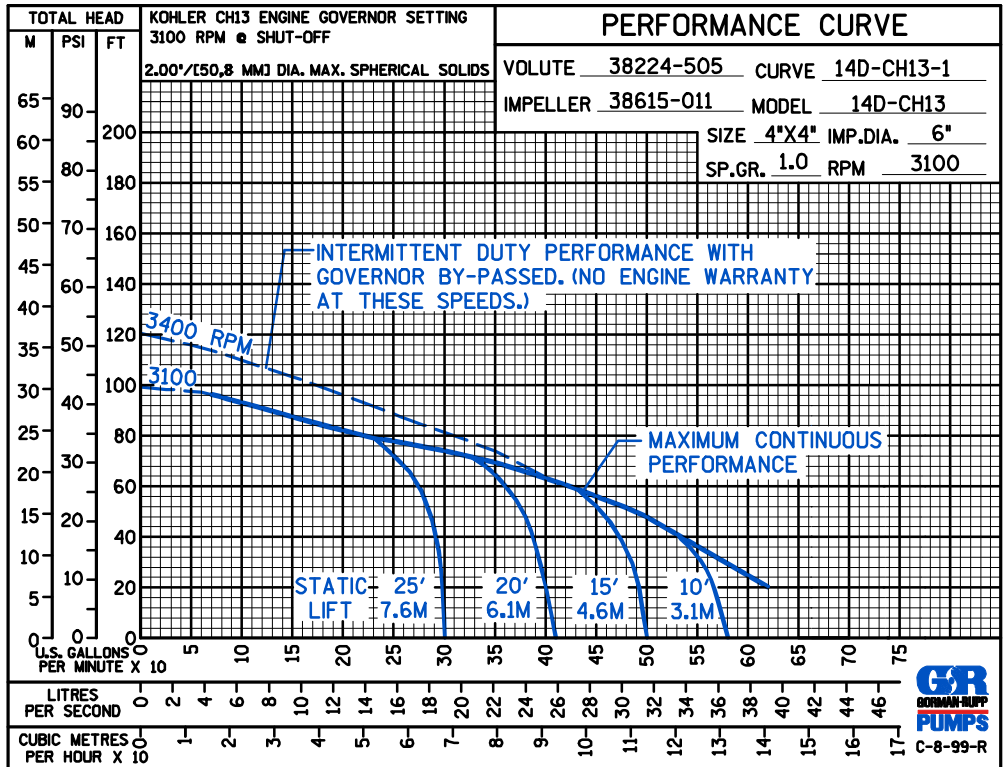
	WITHOUT S/G	WITH S/G
NET WEIGHT:	325 LBS. (147,4 KG.)	318 LBS. (144,2 KG.)
SHIPPING WEIGHT:	377 LBS. (171,0 KG.)	388 LBS. (176,0 KG.)
EXPORT CRATE:	25,1 CU. FT. (0,7 CU. M.)	
WHEEL KIT ADD 25 LBS. (11,3 KG.); SHIPPING CRATE (SEPARATE) 3 CU. FT. (0,1 CU. M.)		



POWERED BY KOHLER CH13PS GASOLINE ENGINE

14D1-CH13 S/G (SHOWN)

DIMENSIONS:
INCHES
[MILLIMETERS]



THE GORMAN-RUPP COMPANY • MANSFIELD, OHIO

GORMAN-RUPP OF CANADA LIMITED • ST. THOMAS, ONTARIO, CANADA

Specifications Subject to Change Without Notice

Printed in U.S.A.