

A C D E U



Gasoline Engine Driven Self Priming Centrifugal Pump Models 14D1-CH13 and 14D1-CH13 S/G Size 4" x 4"

Total Head		Capacity of Pump in U.S. Gallons per Minute (GPM) at Continuous Performance			
P.S.I.	Feet				
41.6	96	54	54	54	54
34.7	80	220	220	220	220
26.0	60	275	364	420	420
17.3	40	290	387	473	530
8.7	20	300	400	490	563
Suction Lift		25'	20'	15'	10'



14D1-CH13 S/G (SHOWN)

WARNING!

Do not use in explosive atmosphere or for pumping volatile flammable liquids.

PUMP SPECIFICATIONS

Size: 4" x 4" (102 mm x 102 mm) NPT - Female.
Casing: Aluminum 356-T6 w/Gray Iron 30. Cutwater Insert. Maximum Operating Pressure 64 psi (441 kPa).*
Semi-Open Type, Two Vane Impeller: Ductile Iron 65-45-12. Handles 2" (50,8 mm) Diameter Spherical Solids.
Replaceable Wear Plate: Carbon Steel C1015.
Removeable Coverplate: Aluminum 356-T6.
Shaft Sleeve: Alloy Steel 4130.
Intermediate Bracket: Aluminum 356-T6.
Seal: Type 31, Mechanical, Self-Lubricated. Silicon Carbide Rotating and Stationary Faces. Fluorocarbon Elastomers (DuPont Viton® or Equivalent). Stainless Steel 304 Cage and Spring. Maximum Temperature of Liquid Pumped, 160°F (71°C).*
Flap Valve: Buna-N w/Nylon Reinforcement; Gray Iron 30.
Flanges: Aluminum 356-T6.
Gaskets: Cork.
Hardware: Standard Plated Steel.
Standard Equipment: Roll Cage w/Rubber Feet. 90° Discharge Elbow. Strainer.
Optional Equipment: Two Wheel Truck Assembly with 10.00" x 2.75" (254 mm x 70 mm) Semi-Pneumatic Tires. Battery (S/G Model Only).

**Consult Factory for Applications Exceeding Maximum Pressure and/or Temperature Indicated.*

ENGINE SPECIFICATIONS

Model: Kohler CH13.
Type: Single Cylinder, Air Cooled, Overhead Valve, Gasoline Engine.
Displacement: 24.3 Cu. In. (398 cc).
Cylinder: Aluminum Alloy w/Cast Iron Liner.
Governor: Mechanical; Adjustable.
Oil Reservoir: 2.1 U.S. Qts. (1,9 liter).
Air Cleaner: Dual Element w/Precleaner.
Fuel Tank: 5 U.S. Qts. (4,7 liter).
Full Load Operating Time: 1.1 Hrs.
Starter: Recoil or 12V Electric w/15A Alternator (S/G Model Only).
Ignition System: Electronic; Solid State.
Standard Equipment: Muffler w/Guard. Manual Choke and Throttle Control w/Top Speed Limit. Oil Sentry™ Shut Down (S/G Model Only). Oil Fill w/Dipstick; Drain Port Each Side.



THE GORMAN-RUPP COMPANY • MANSFIELD, OHIO

GORMAN-RUPP OF CANADA LIMITED • ST. THOMAS, ONTARIO, CANADA

www.grpumps.com

Specifications Subject to Change Without Notice

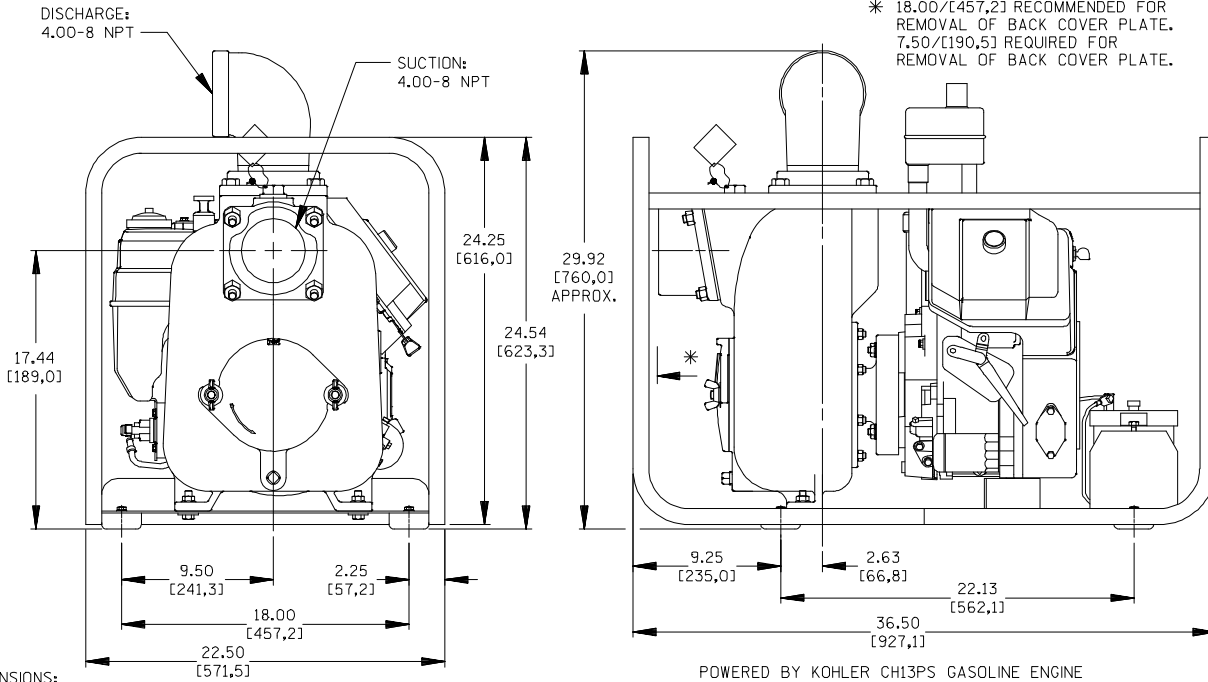
Printed in U.S.A.

Specification Data

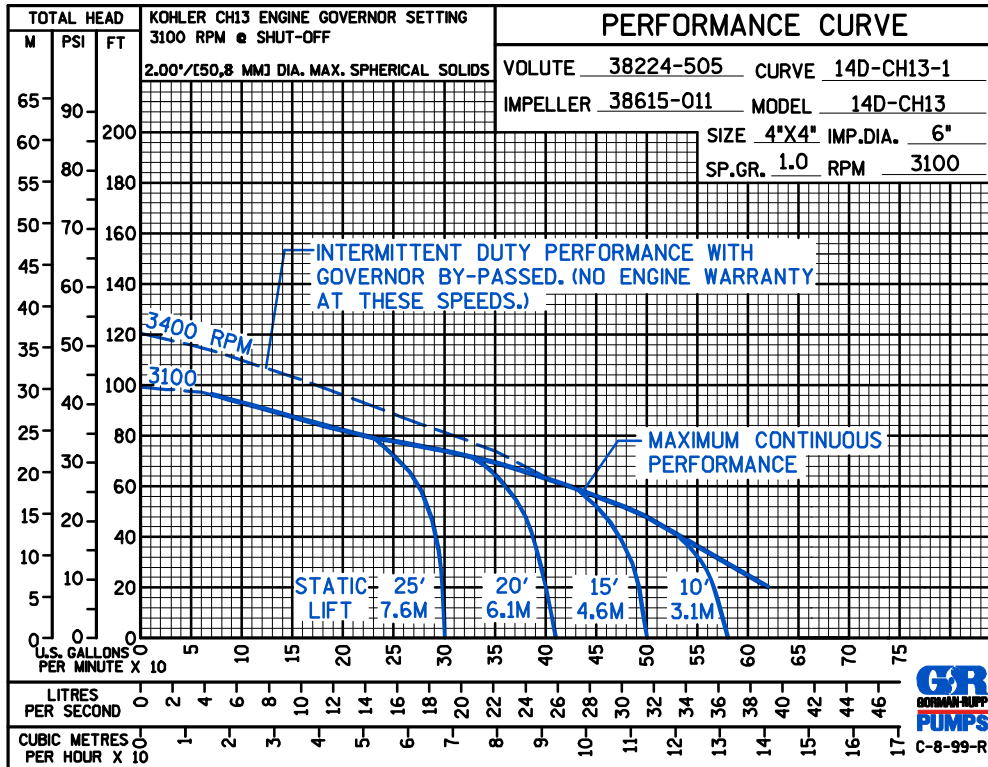
SECTION 45, PAGE 826

APPROXIMATE DIMENSIONS and WEIGHTS

WITHOUT S/G WITH S/G
 NET WEIGHT: 222 LBS. (100,7 KG.) 230 LBS. (104,3 KG.)
 SHIPPING WEIGHT: 274 LBS. (124,3 KG.) 285 LBS. (129,3 KG.)
 EXPORT CRATE: 25,1 CU. FT. (0,7 CU. M.)
 WHEEL KIT ADD 25 LBS. (11,3 KG.); SHIPPING CRATE (SEPARATE) 3 CU. FT. (0,1 CU. M.)



14D1-CH13 S/G (SHOWN)



THE GORMAN-RUPP COMPANY • MANSFIELD, OHIO

GORMAN-RUPP OF CANADA LIMITED • ST. THOMAS, ONTARIO, CANADA

Specifications Subject to Change Without Notice

Printed in U.S.A.