

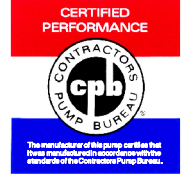
ACDEU

Self Priming Centrifugal Pump



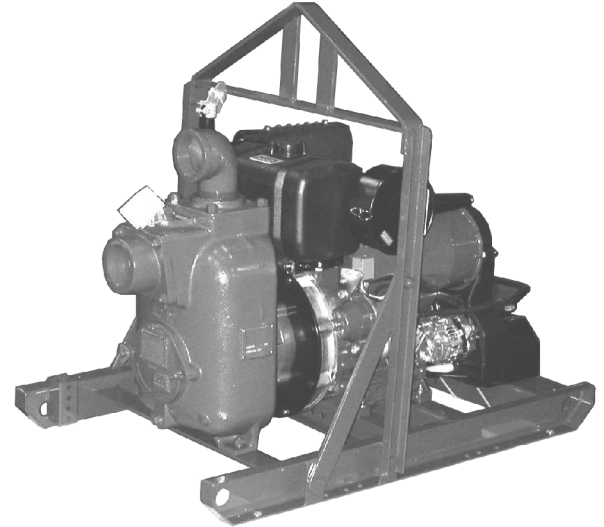
Diesel Engine Driven
Model 13E2-LPA2 S/G

Size 3" x 3"



20MT

Total Head		Capacity Of Pump In U.S. Gallons Per Minute (GPM) At Continuous Performance				
P.S.I.	Feet					
38.2	89	70	70	70	70	70
34.8	80	180	180	180	180	180
30.2	70	203	270	312	320	320
25	60	207	280	338	397	407
21.8	50	210	282	345	413	458
17.2	40	212	283	348	417	470
13	30	213	286	352	422	476
8.7	20	215	287	352	425	478
Suction Lift		25'	20'	15'	10'	5'



PUMP SPECIFICATIONS

- Size:** 3" x 3" (76 mm x 76 mm) N.P.T. Female.
- Pump Casing:** Gray Iron No. 30.
- Maximum Operating Pressure 62 psi (428 kPa).*
- Open Type, Two Vane Impeller:** Gray Iron No. 30.
- Handles 2" (50,8 mm) Diameter Spherical Solids.
- Replaceable Wear Plate:** Carbon Steel Grade 1045.
- Removable Cover Plate:** Gray Iron No. 30. 11 lbs (5.0 kg).
- Intermediate Bracket:** Gray Iron No. 30.
- Seal:** Double Grease-Lubricated with Spring Loaded Grease Cup. Sintered Bronze Stationary Seal Seats. Steel Rotating Faces. Neoprene Packing Rings. Maximum Temperature of Liquid Pumped, 110°F (43°C).* Maximum Suction Pressure 10 psi (69 kPa).
- Seal Liner:** Copper Alloy C26000.
- Flap Valve:** Buna-N with Nylon Reinforcing. Gray Iron No. 30.
- Flanges:** Gray Iron No. 30.
- Gaskets:** Cork with Nitrile Binder (NC710).
- Hardware:** Standard Plated Steel.
- Hoisting Bail.**
- Skid Base.**
- 90° Discharge Elbow.**
- Strainer.**
- Optional Equipment:** Battery. Two Wheel Truck Assemblies: P225/75 R15 Pneumatic Tires (35 MPH [56 KPH] Max.) 4.75" x 8" (121 mm x 203 mm) Semi-Pneumatic Tires (5 MPH [8 KPM] Max.).

*Consult Factory for Applications Exceeding Maximum Pressure and/or Temperature Indicated.

WARNING!

Do not use in explosive atmosphere or for pumping volatile flammable liquids.

ENGINE SPECIFICATIONS

- Model:** Lister Petter LPA2-01.
- Type:** Two Cylinder, Four Cycle, Air Cooled Diesel Engine.
- Displacement:** 44.3 Cu. In. (726 cc).
- Governor:** Mechanical.
- Fuel Injection:** Direct.
- Lubrication:** Full Pressure.
- Air Cleaner:** Dry Type.
- Oil Reservoir:** 3.4 U.S. Pints (3.2 Liters).
- Fuel Tank:** 3.17 U.S. Gallons (12 Liters).
- Full Load Operating Time:** 4.2 Hours.
- Starter:** 12 Volt Electric.

Standard Features: Muffler with Guard and Weather Cap. Start/Stop and Variable Throttle Lever Controls. Low Oil Pressure Safety Shut-down Switch.

LISTER PETTER PUBLISHED PERFORMANCE:
Maximum Continuous B.H.P. 14.1 @ 3000 RPM
Maximum Dynamic B.H.P. 15.5 @ 3000 RPM



THE GORMAN-RUPP COMPANY • MANSFIELD, OHIO

GORMAN-RUPP OF CANADA LIMITED • ST. THOMAS, ONTARIO, CANADA

Specifications Subject to Change Without Notice

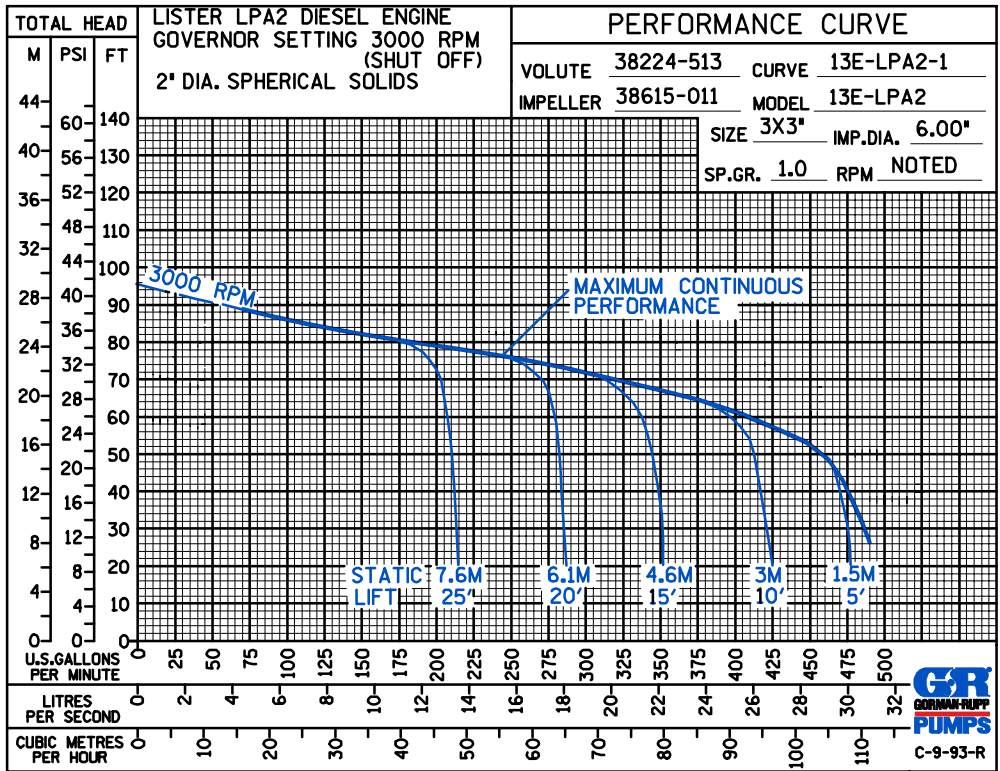
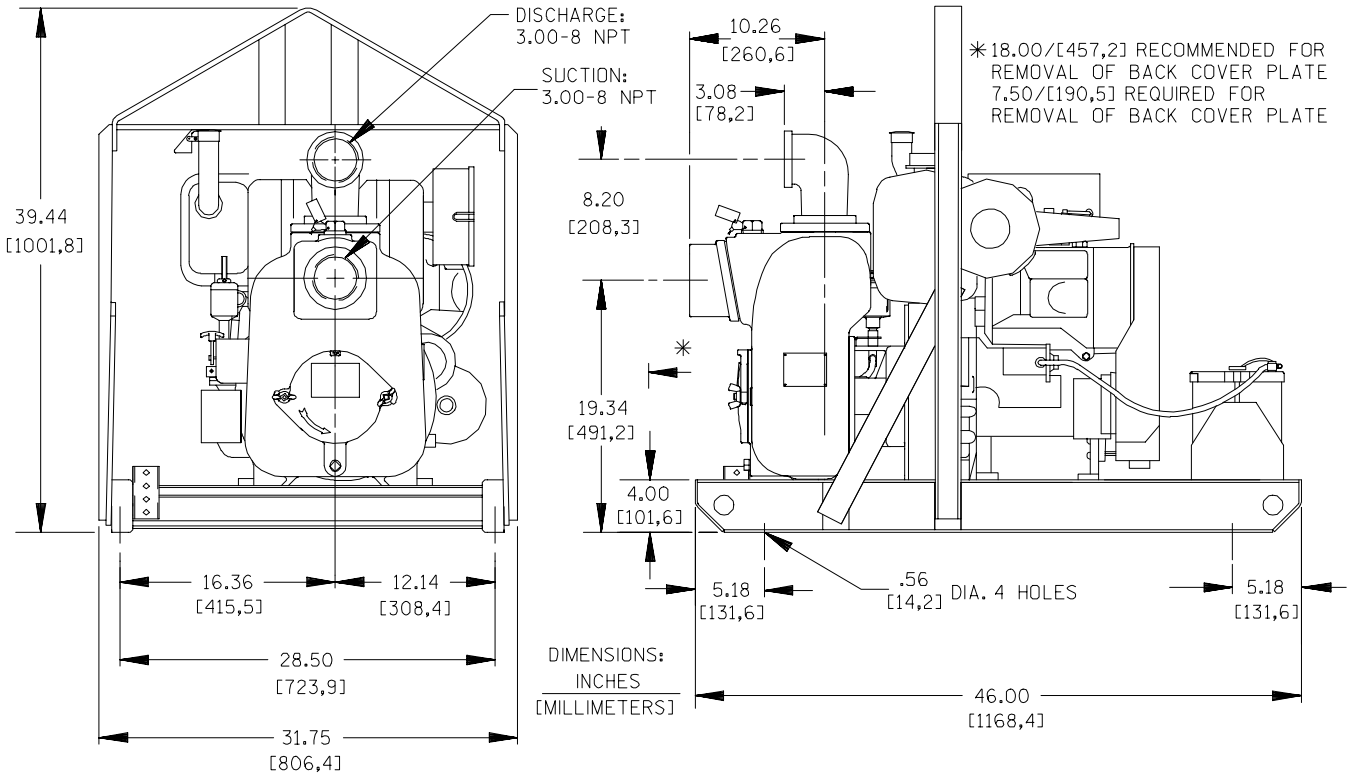
Printed in U.S.A.

Specification Data

SECTION 45, PAGE 750

APPROXIMATE DIMENSIONS and WEIGHTS

	SKID BASE	2-WHEEL
NET WEIGHT:	630 LBS. [285,8 KG.]	824 LBS. [374 KG.]
SHIPPING WEIGHTS:	734 LBS. [332,9 KG.]	824 LBS. [374 KG.]
EXPORT CRATE:	42 CU. FT. [1.2 CU. M.]	



THE GORMAN-RUPP COMPANY • MANSFIELD, OHIO

GORMAN-RUPP OF CANADA LIMITED • ST. THOMAS, ONTARIO, CANADA

Specifications Subject to Change Without Notice

Printed in U.S.A.