

ACDEU



Gasoline Engine Driven Self Priming Centrifugal Pump

Models 13A52-CH13 and 13A52-CH13 S/G

Size 3" x 3"



18 MT

Total Head		Capacity of Pump in U.S. Gallons per Minute (GPM) at Continuous Performance				
P.S.I.	Feet					
52.0	120	75	75	75	75	75
43.4	100	147	165	165	165	165
32.5	75	167	233	260	260	260
21.7	50	174	240	287	335	343
10.8	25	177	243	294	348	396
Suction Lift		25'	20'	15'	10'	5'



13A52-CH13 S/G SHOWN

PUMP SPECIFICATIONS**Size:** 3" x 3" (76 mm x 76 mm) NPT - Female.**Casing:** Gray Iron 30.

Maximum Operating Pressure 94 psi (648 kPa).*

Semi-Open Type, Two Vane Impeller: Ductile Iron 65-45-12. Handles 1 1/2" (38,1 mm) Diameter Spherical Solids.**Replaceable Wear Plate:** Standard Carbon Steel C1015.**Removable Cover Plate:** Gray Iron 30; 15 lbs. (6,8 kg).**Intermediate Bracket:** Gray Iron 30.**Shaft Sleeve:** Alloy Steel 4130.**Seal:** Type 31, Mechanical, Self-Lubricated. Silicon Carbide Rotating and Stationary Faces. Fluorocarbon Elastomers (DuPont Viton® or Equivalent). Stainless Steel 304 Cage and Spring. Maximum Temperature of Liquid Pumped, 160°F (71°C).***Flap Valve:** Buna-N^w/Nylon Reinforcement; Gray Iron 30.**Flange:** Gray Iron 30.**Gaskets:** Rubber and Vegetable Fiber.**Hardware:** Standard Plated Steel.**Standard Equipment:** Roll Cage^w/Rubber Feet.

90° Ductile Iron Discharge Elbow. Strainer.

Optional Equipment: Battery (**S/G Model Only**). Wheel Kit with 10.00" x 2.75" (254 mm x 70 mm) Semi-Pneumatic Tires.**Consult Factory for Applications Exceeding Maximum Pressure and/or Temperature Indicated.***ENGINE SPECIFICATIONS****Model:** Kohler CH13.**Type:** Single Cylinder, Air Cooled, Overhead Valve, Gasoline Engine.**Displacement:** 24.3 Cu. In. (398 cc).**Cylinder:** Aluminum Alloy^w/Cast Iron Liner.**Governor:** Mechanical; Adjustable.**Oil Reservoir:** 2.1 U.S. Qts. (1,9 liter).**Air Cleaner:** Dual Element^w/Precleaner.**Fuel Tank:** 5 U.S. Qts. (4,7 liter).**Full Load Operating Time:** 1.1 Hrs.**Starter:** Recoil or 12V Electric^w/15A Alternator (**S/G Model Only**).**Ignition System:** Electronic; Solid State.**Standard Equipment:** Muffler^w/Guard. Manual Choke and Throttle Control^w/Top Speed Limit. Oil Sentry™ Shut Down (**S/G Model Only**). Oil Fill^w/Dipstick; Drain Port Each Side.

THE GORMAN-RUPP COMPANY • MANSFIELD, OHIO

GORMAN-RUPP OF CANADA LIMITED • ST. THOMAS, ONTARIO, CANADA

www.grpumps.com

Specifications Subject to Change Without Notice

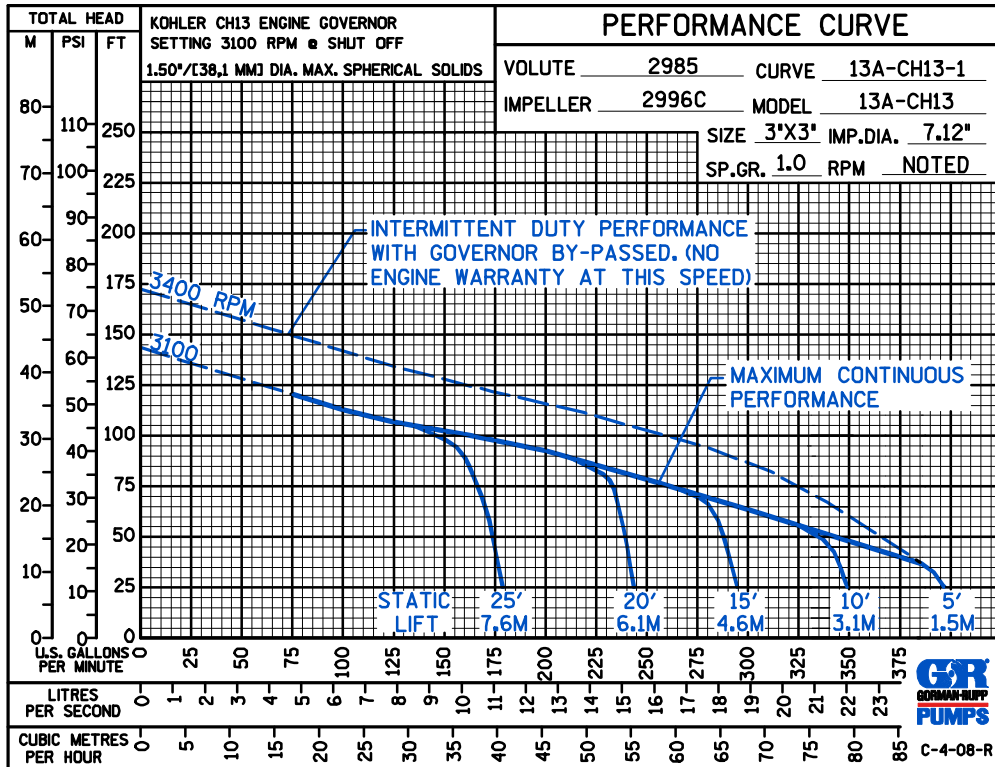
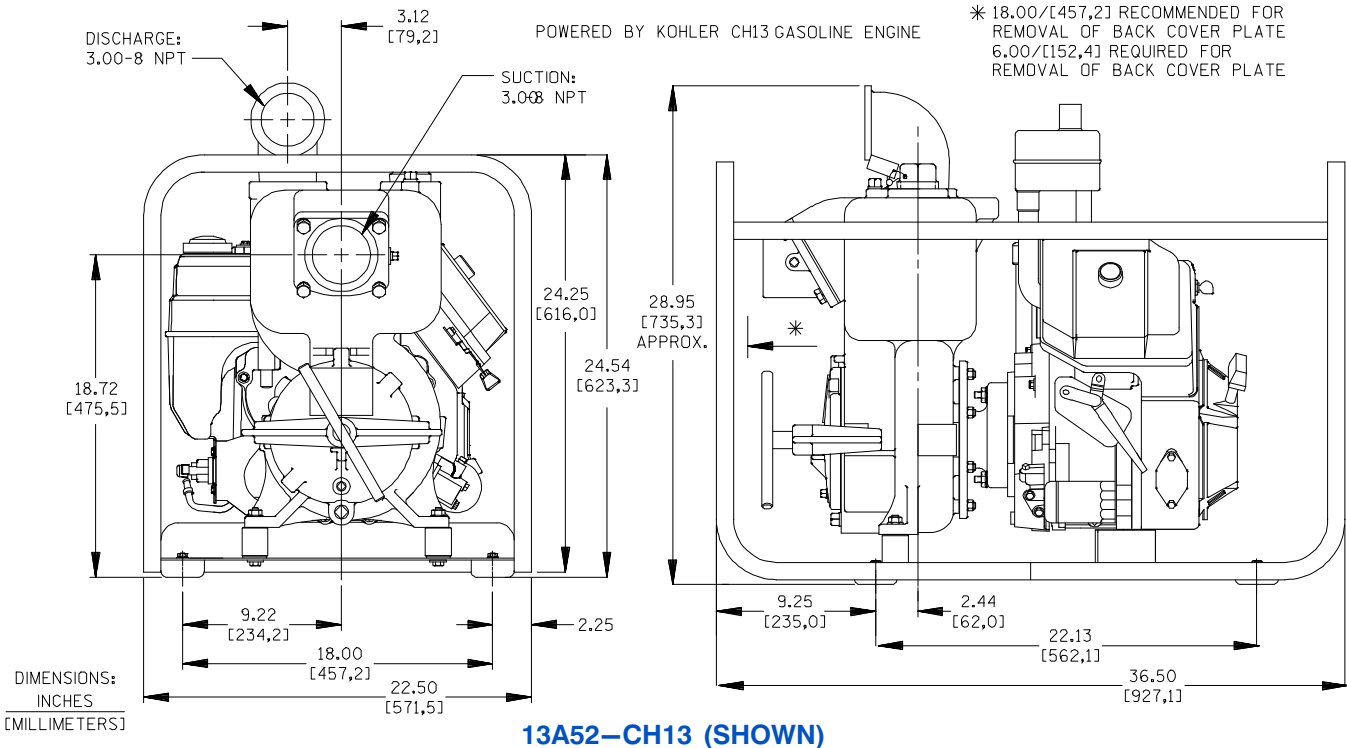
Printed in U.S.A.

Specification Data

SECTION 45, PAGE 675

APPROXIMATE DIMENSIONS and WEIGHTS

NET WEIGHT: 297 LBS. (135 KG.)
 SHIPPING WEIGHT: 338 LBS. (153 KG.)
 EXPORT CRATE SIZE: 24.5 CU. FT. (0,7 CU. M.)
 WHEEL KIT ADD 4 6 LBS. (21 KG.);
 SHIPPING CRATE (SEPARATE) 3 CU. FT. (0,1 CU. M.)



THE GORMAN-RUPP COMPANY • MANSFIELD, OHIO

GORMAN-RUPP OF CANADA LIMITED • ST. THOMAS, ONTARIO, CANADA

Specifications Subject to Change Without Notice

Printed in U.S.A.