

A C E G

Gasoline Engine Driven



Self Priming Centrifugal Pump

Model 13D-GX240

Size 3" x 3"



18MTC

Total Head		Capacity Of Pump In U.S. Gallons Per Minute (GPM) At Continuous Performance				
P.S.I.	Feet	90	90	90	90	90
38.6	89	90	140	150	150	150
34.7	80	100	182	205	205	205
30.3	70	138	210	242	258	258
26.0	60	162	228	266	292	302
21.7	50	176	238	282	315	335
17.3	40	180	246	292	328	356
13.0	30	182	250	300	338	370
8.7	20	185				
Suction Lift		25'	20'	15'	10'	5'



PUMP SPECIFICATIONS

- Size:** 3" x 3" (76 mm x 76 mm) NPT - Female.
Casing: Aluminum Alloy 356-T6 w/Gray Iron 30 Cutwater Insert. Maximum Operating Pressure 66 psi (455 kPa).*
- Semi-Open Type, Two Vane Impeller:** Ductile Iron 65-45-12. Handles 1 1/2" (38,1 mm) Diameter Spherical Solids.
Replaceable Wear Plate: Carbon Steel 1026.
Removable Cover Plate: Aluminum Alloy 356-T6; 4 lbs. (1.8 kg.).
Intermediate Bracket: Aluminum Alloy 356-T6.
Seal: Double, Grease-Lubricated with Spring-Loaded Grease Cup. Sintered Bronze Stationary Seal Seats. Steel Rotating Faces. Neoprene Packing Rings. Maximum Temperature of Liquid Pumped, 110°F (43°C). Maximum Suction Pressure 10 psi (69 kPa).*
- Seal Liner:** Copper Alloy C26000.
Flap Valve: Buna-N w/Nylon Reinforcing; Steel and Brass.
Suction Flange: Aluminum Alloy 356-T6.
Gaskets: Cork w/Nitrile Binder (NC710).
O-Ring: Buna-N.
Hardware: Standard Plated Steel.
Roll Cage with Rubber Feet.
90° Ductile Iron Discharge Elbow.
Strainer.
- Optional Equipment:** Wheel Kit with 2.75" x 10" (70 mm x 254 mm) Semi-Pneumatic Tires.

*Consult Factory for Applications Exceeding Maximum Pressure and/or Temperature Indicated.



ENGINE SPECIFICATIONS

- Model:** Honda GX240.
Type: Single Cylinder, Four Cycle, Air Cooled, Overhead Valve, Gasoline Engine.
Displacement: 14.8 Cu. In. (242 cc).
Carburetor: Horizontal Type.
Cylinder: Aluminum Alloy w/Cast Iron Liner.
Governor: Mechanical.
Lubrication: Splash System.
Air Cleaner: Dry Type, Dual Element.
Oil Reservoir: 37 U.S. Oz. (1,1 Liters).
Fuel Tank: 1.6 U.S. Gallons (6,1 Liters).
Full Load Operating Time: 2.7 Hours.
Starter: Rope Rewind.
Ignition System: Transistorized Magneto.
Standard Features: Muffler w/Guard. Rotary Stop Switch. Manual Throttle Control with Top Speed Limit. Manual Choke. "Oil Alert™" Low Oil Shut Down.

HONDA PUBLISHED PERFORMANCE:

Maximum Continuous B.H.P. 6.8 (5,1 kW) @ 3600 RPM
 Maximum Dynamic B.H.P. 8.0 (6,0 kW) @ 3600 RPM



THE GORMAN-RUPP COMPANY • MANSFIELD, OHIO

GORMAN-RUPP OF CANADA LIMITED • ST. THOMAS, ONTARIO, CANADA

www.grpumps.com
 Specifications Subject to Change Without Notice

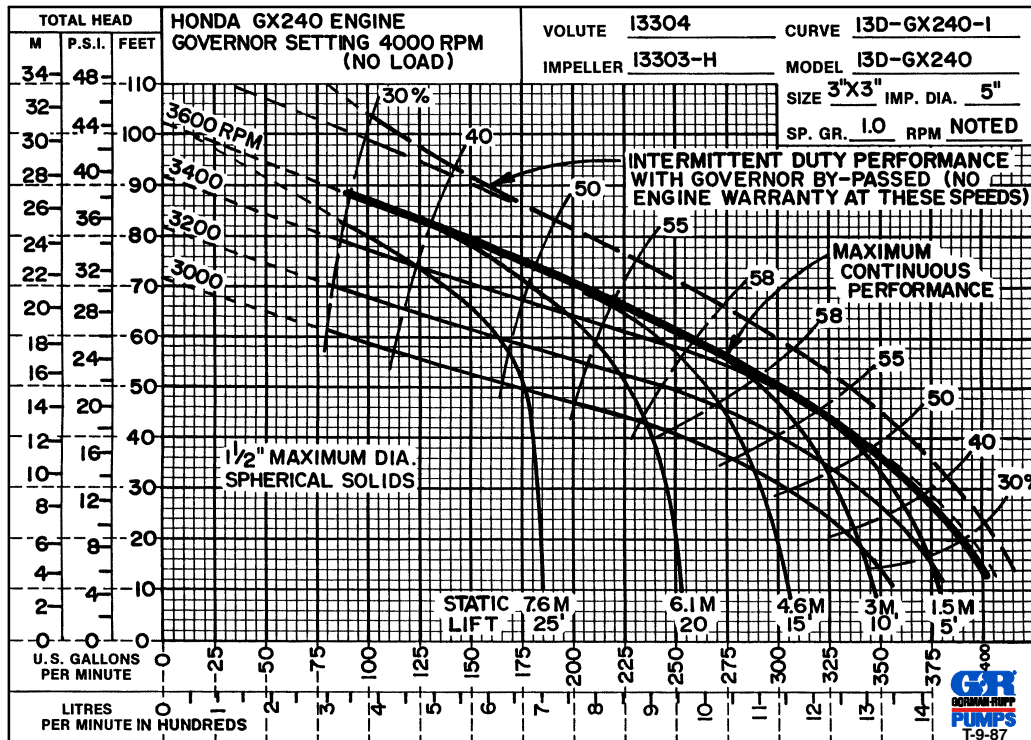
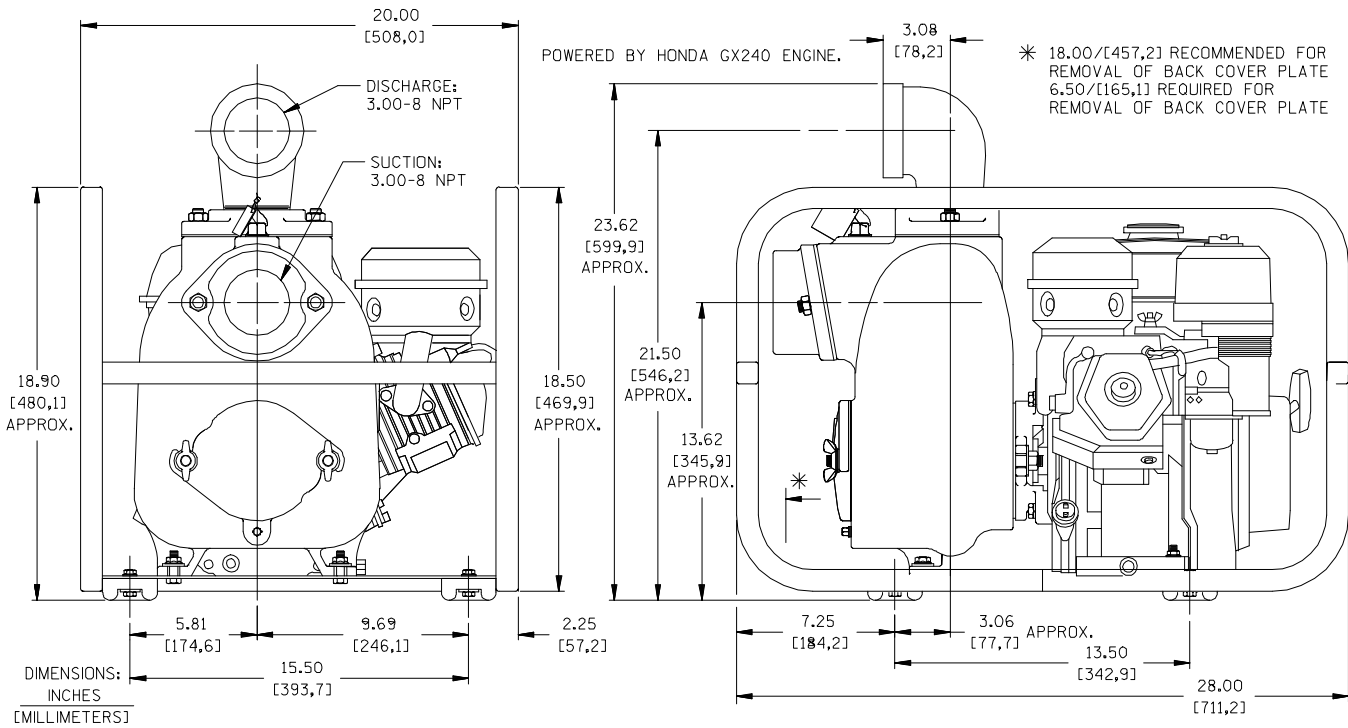
Printed in U.S.A.

Specification Data

APPROXIMATE
DIMENSIONS and WEIGHTS

NET WEIGHT: 126 LBS. (57 KG.)
SHIPPING WEIGHT: 136 LBS. (62 KG.)
EXPORT CRATE: 6.3 CU. FT. (0,19 CU. M.)
WHEEL KIT ADD 25 LBS. (11,3 KG.); SHIPPING CRATE (SEPARATE) 3 CU. FT. (0,1 CU. M.)

SECTION 45, PAGE 552



THE GORMAN-RUPP COMPANY • MANSFIELD, OHIO

GORMAN-RUPP OF CANADA LIMITED • ST. THOMAS, ONTARIO, CANADA

Specifications Subject to Change Without Notice

Printed in U.S.A.