



Self Priming Centrifugal Pump

Gasoline Engine Driven

Model 13D-19

Size 3" x 3"



18MTC

Total Head		Capacity Of Pump In U.S. Gallons Per Minute At Continuous Performance				
P.S.I.	Feet					
38.6	89	90	90	90	90	90
34.7	80	100	141	147	147	147
30.3	70	138	180	205	205	205
26.0	60	163	209	243	258	258
21.7	50	176	227	266	293	303
17.3	40	180	238	282	314	335
13.0	30	183	246	292	328	356
8.7	20	184	250	300	338	370
Suction Lift		25'	20'	15'	10'	5'



PUMP SPECIFICATIONS

- Size:** 3" x 3" (76 mm x 76 mm) NPT - Female.
- Casing:** Aluminum No. 356-T6 With Gray Iron No. 30. Cutwater Insert. Maximum Operating Pressure 67 psi (462 kPa).*
- Open Type, Two Vane Impeller:** Ductile Iron 65-45-12. Handles 1-1/2" (38 mm) Diameter Spherical Solids.
- Replaceable Wear Plate:** Steel No. 1045.
- Removable Cover Plate:** Aluminum No. 356-T6, 4 lbs. (1,8 kg).
- Intermediate Bracket:** Aluminum No. 356-T6.
- Seal:** Double Grease-Lubricated with Spring Loaded Grease Cup. Sintered Bronze Stationary Seal Seats. Rotating Faces are Steel. Maximum Temperature of Liquid Pumped, 110°F (43°C).* Maximum Suction Pressure 10 PSI (69 kPa).*
- Seal Liner:** Brass No. 70-30.
- Flap Valve:** Buna-N with Nylon Reinforcing. Grade 1045 Carbon Steel and Commercially Available Brass.
- Flange:** Aluminum No. 356-T6.
- Gaskets:** Cork with Nitrile Binder (NC710).
- O-Ring:** Buna-N.
- Hardware:** Standard Plated Steel.
- Roll Cage with Rubber Feet.**
- 90° Discharge Elbow.**
- Strainer.**

Optional Equipment: Two Wheel Truck Assembly with 2.75" x 10" (70 mm x 254 mm) Semi-Pneumatic Tires.

* Consult Factory for Applications Exceeding Maximum Pressure and/or Temperature Indicated.

WARNING!
Do not use in explosive atmosphere or for pumping volatile flammable liquids.

ENGINE SPECIFICATIONS

- Model:** Briggs & Stratton 19.
- Type:** Single Cylinder, Four Cycle, Air Cooled, Gasoline Engine.
- Displacement:** 19.44 Cu. In. (318 cc).
- Carburetor:** Flow-Jet.
- Governor:** Mechanical.
- Lubrication:** Splash System.
- Air Cleaner:** Dual Element.
- Oil Reservoir:** 2.75 U.S. Qts. (1,3 liter).
- Fuel Tank:** 4 U.S. Qts. (3,8 liter).
- Full Load Operating Time:** 1.2 Hrs.
- Starter:** Rope Rewind.

Standard Equipment: Muffler, Manual Stop, Choke, and Friction Control w/Top Speed Limit. "Oilgard™" Low Oil Shut Down.

BRIGGS & STRATTON PUBLISHED PERFORMANCE:

Maximum Continuous 6.8 BHP (5,1 kW) @ 3600 RPM
Maximum Dynamic 8.0 BHP (6,0 kW) @ 3600 RPM



THE GORMAN-RUPP COMPANY • MANSFIELD, OHIO

www.gormanrupp.com

GORMAN-RUPP OF CANADA LIMITED • ST. THOMAS, ONTARIO, CANADA

Specifications Subject to Change Without Notice

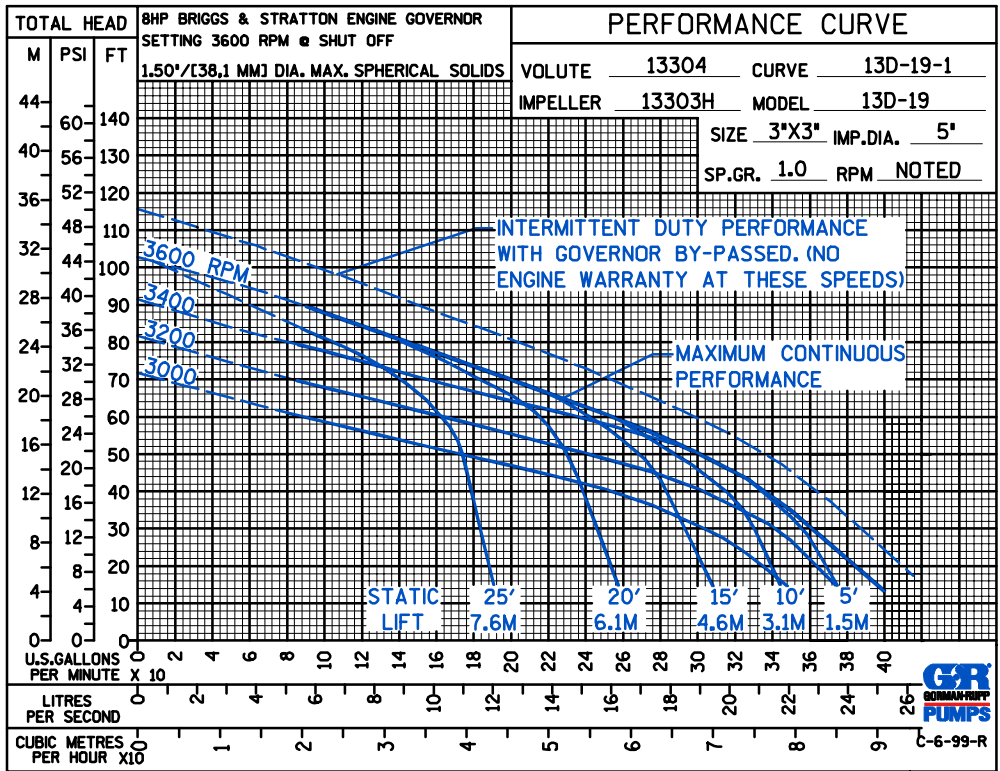
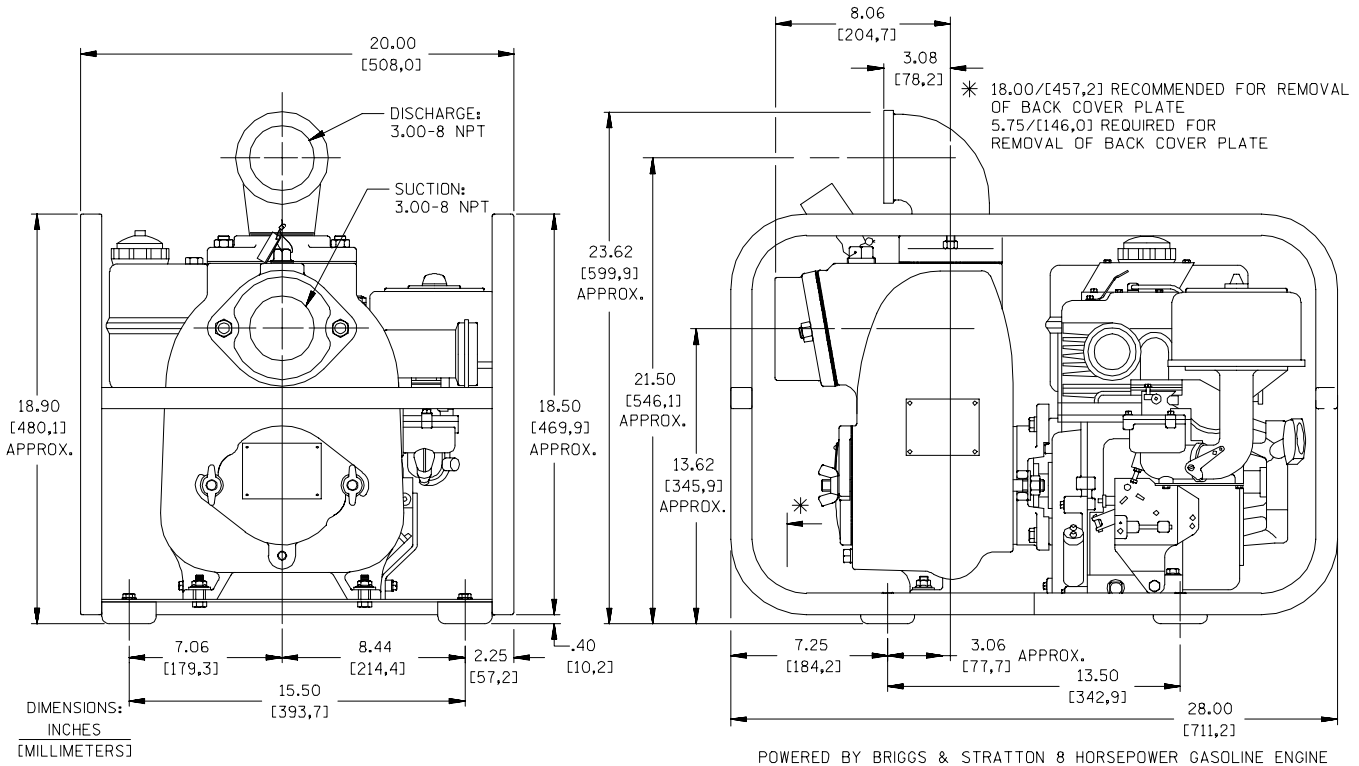
Printed in U.S.A.

Specification Data

APPROXIMATE DIMENSIONS and WEIGHTS

NET WEIGHT: 120 LBS. (54 KG.)
 SHIPPING WEIGHT: 130 LBS. (59 KG.)
 EXPORT CRATE: 8.5 CU. FT. (0,24 CU. M.)
 WHEEL KIT ADD 25 LBS. (11.3 KG.); SHIPPING CRATE (SEPARATE) 3 CU. FT. (0,1 CU. M.)

SECTION 45, PAGE 550



THE GORMAN-RUPP COMPANY • MANSFIELD, OHIO

GORMAN-RUPP OF CANADA LIMITED • ST. THOMAS, ONTARIO, CANADA

Specifications Subject to Change Without Notice

Printed in U.S.A.