



Self Priming Centrifugal Pump

Models 12D-1B30 FT4 and 12D1-1B30 FT4

Size 2" x 2"



| Total Head | | Capacity of Pump in U.S. Gallons per Minute (GPM) at Continuous Performance | | | |
|---------------------|------|---|------------|------------|-----------|
| P.S.I. | Feet | | | | |
| 50.3 | 116 | 40 | 40 | 40 | 40 |
| 43.4 | 100 | 86 | 100 | 100 | 100 |
| 34.7 | 80 | 92 | 114 | 134 | 158 |
| 26.0 | 60 | 95 | 117 | 136 | 174 |
| 17.3 | 40 | 98 | 119 | 138 | 178 |
| 8.7 | 20 | 100 | 121 | 140 | 180 |
| Suction Lift | | 20' | 15' | 10' | 5' |

PHOTO NOT AVAILABLE AT TIME OF PUBLISHING

PUMP SPECIFICATIONS

Size: 2" x 2" (51 mm x 51 mm) NPT - Female.

Casing: Aluminum Alloy 356-T6 w/Gray Iron 30 Cutwater Insert.
Maximum Operating Pressure 80 psi (552 kPa).*

Semi-Open Type, Two Vane Impeller: Ductile Iron 65-45-12.
Handles 1 3/16" (30.2 mm) Diameter Spherical Solids.

Replaceable Wear Plate: Carbon Steel ASTM A36.

Removable Cover Plate: Aluminum Alloy 356-T6; 4 lbs. (1,8 kg).

Intermediate Bracket: Gray Iron 30.

Seal:

(12D) Double, Grease-Lubricated w/Spring-Loaded Grease Cup. Sintered Bronze Stationary Seal Seats. Steel Rotating Faces. Neoprene Packing Rings. Maximum Temperature of Liquid Pumped, 110°F (43°C).

Maximum Suction Pressure 10 psi (69 kPa).*

(12D1) Type 31, Mechanical, Self-Lubricated. Silicon Carbide Rotating and Stationary Faces. Fluorocarbon Elastomers (DuPont Viton® or Equivalent). Stainless Steel 316 Cage and Spring.

Maximum Temperature of Liquid Pumped 160°F (71°C).*

Seal Liner: (12D) Copper Alloy C26000.

Shaft Sleeve: (12D1) 304 Stainless Steel.

Flap Valve: Buna-N with Nylon Reinforcement; Gray Iron 30 and Sintered Powdered Steel.

Suction Flange: Aluminum Alloy 356-T6.

Gaskets: Cork w/Nitrile Binder (NC710) and Vegetable Fiber.

Hardware: Standard Plated Steel.

Roll Cage with Rubber Feet.

90° Discharge Elbow.

Strainer.

Optional Equipment: Wheel Kit w/Semi-Pneumatic Tires.

**Consult Factory for Applications Exceeding Maximum Pressure and/or Temperature Indicated.*



ENGINE SPECIFICATIONS

Model: Hatz 1B30.

EPA Tier: Final Tier 4.

Type: Four Cycle, Air Cooled, Diesel Engine.

Displacement: 21.2 Cu. In. (347 cc).

Lubrication: Forced Circulation.

Air Cleaner: Dry Type.

Fuel Tank: 1.32 U.S. Gal. (5,0 liters).

Full Load Operating Time: 2.8 Hours.

Starter: Rope Recoil.

Standard Equipment: Exhaust Silencer Muffler w/Guard. 90° Exhaust Deflector. Hand Throttle and Stop Control.

HATZ PUBLISHED PERFORMANCE:

Maximum Continuous Net B.H.P.

6.8 (5,1 kW) @ 3600 RPM



GORMAN-RUPP PUMPS

www.grpumps.com

Specifications Subject to Change Without Notice

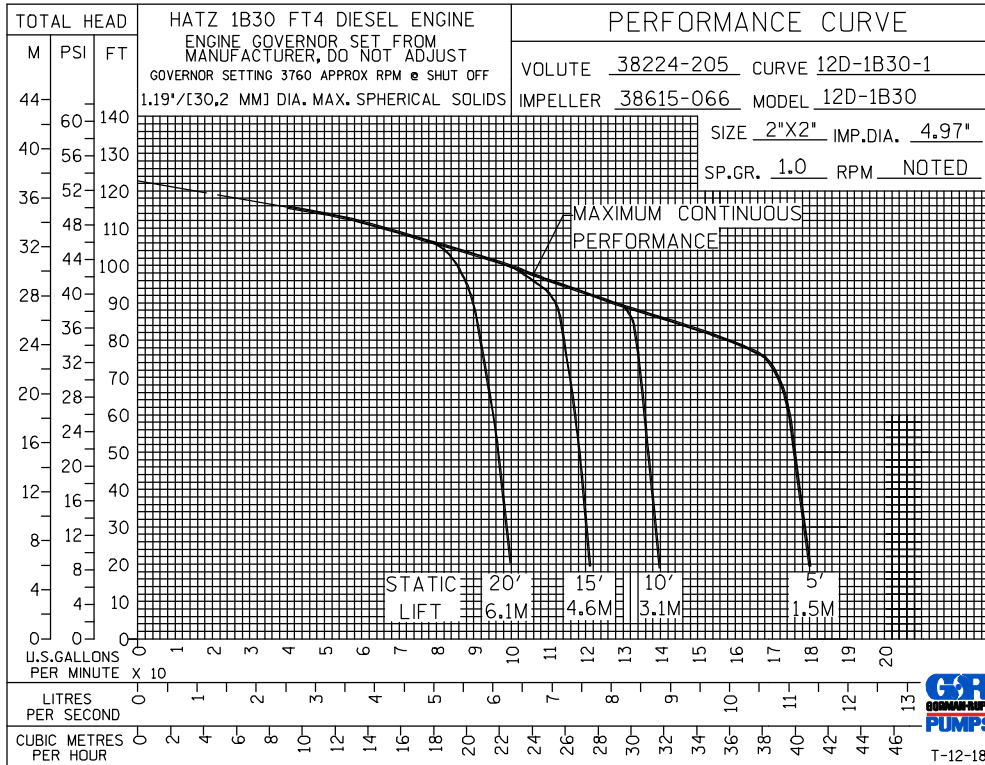
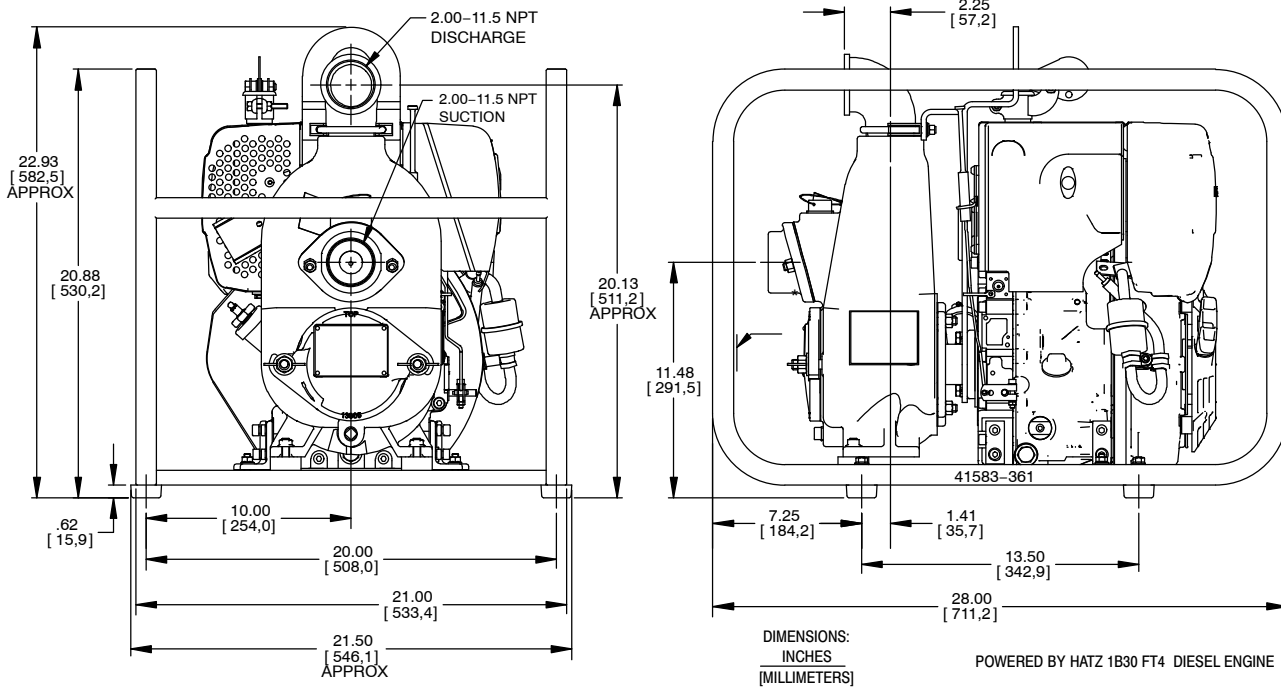
Printed in U.S.A.

Specification Data

APPROXIMATE DIMENSIONS and WEIGHTS

NET WEIGHT: 150 LBS. (68 KG.)
SHIPPING WEIGHT: 161 LBS. (73 KG.)
EXPORT CRATE: 13.2 CU. FT. (0,37 CU. M.)
WHEEL KIT (ADD): 25 LBS. (11,3 KG.);
SHIPPING CRATE (SEPARATE) 3 CU. FT. (0,1 CU. M.).

SECTION 45, PAGE 541



GORMAN-RUPP PUMPS

www.grpumps.com

Specifications Subject to Change Without Notice

Printed in U.S.A.