

A C E G



Self Priming Centrifugal Pump

Model 12D-L48EE

Size 2" x 2"



10MTC

Total Head		Capacity Of Pump In U.S. Gallons Per Minute (GPM) At Continuous Performance				
P.S.I.	Feet					
46.0	106	42	42	42	42	42
43.4	100	61	61	61	61	61
39.0	90	84	94	94	94	94
34.7	80	88	118	125	125	125
30.3	70	91	123	138	148	148
26.0	60	92	125	141	163	166
21.7	50	93	126	144	169	178
17.3	40	94	127	147	174	188
13.0	30	95	128	150	178	198
Suction Lift		25'	20'	15'	10'	5'



PUMP SPECIFICATIONS

- Size:** 2" x 2" (51 mm x 51 mm) NPT - Female.
- Casing:** Aluminum Alloy 356-T6 w/Gray Iron 30 Cutwater Insert. Maximum Operating Pressure 76 psi (524 kPa).*
- Semi-Open Type, Two Vane Impeller:** Ductile Iron 65-45-12. Handles 1 3/16" (30,2 mm) Diameter Spherical Solids.
- Replaceable Wear Plate:** Carbon Steel 1026.
- Removable Cover Plate:** Aluminum Alloy 356-T6; 4 lbs. (1,8 kg).
- Intermediate Bracket:** Gray Iron 30.
- Seal:** Double, Grease-Lubricated w/Spring-Loaded Grease Cup. Sintered Bronze Stationary Seal Seats. Steel Rotating Faces. Neoprene Packing Rings. Maximum Temperature of Liquid Pumped 110°F (43°C). Maximum Suction Pressure 10 psi (69 kPa).*
- Seal Liner:** Copper Alloy C26000.
- Flap Valve:** Buna-N w/Nylon Reinforcement; Gray Iron 30.
- Suction Flange:** Aluminum Alloy 356-T6.
- Gaskets:** Cork w/Nitrile Binder (NC710) and Vegetable Fiber.
- Hardware:** Standard Plated Steel.
- Roll Cage with Rubber Feet.**
- Strainer.**
- 90° Ductile Iron Discharge Elbow.**

Optional Equipment: Wheel Kit w/Semi-Pneumatic Tires.

**Consult Factory for Applications Exceeding Maximum Pressure and/or Temperature Indicated.*

WARNING!

Do not use in explosive atmosphere or for pumping volatile flammable liquids.

ENGINE SPECIFICATIONS

- Model:** Yanmar L48EE.
- Type:** Single Cylinder, Four Cycle, Air Cooled, Diesel Engine.
- Displacement:** 13.4 Cu. In. (219 cc).
- Governor:** Variable Speed, Engine-Mounted.
- Lubrication:** Forced Circulation.
- Air Cleaner:** Dry Type.
- Oil Reservoir:** 27 U.S. Oz. (0,8 liter).
- Fuel Tank:** 0.66 U.S. Gal. (2,5 liters).
- Full Load Operating Time:** 1.8 Hours.
- Starter:** Rope Rewind.

Standard Equipment: Exhaust Silencer Muffler w/Guard. 90° Exhaust Deflector. Hand Throttle and Stop Control.

YANMAR PUBLISHED PERFORMANCE:

Maximum Net Continuous B.H.P.
4.2 (3,1 kW) @ 3600 RPM



THE GORMAN-RUPP COMPANY • MANSFIELD, OHIO

GORMAN-RUPP OF CANADA LIMITED • ST. THOMAS, ONTARIO, CANADA

www.grpumps.com
Specifications Subject to Change Without Notice

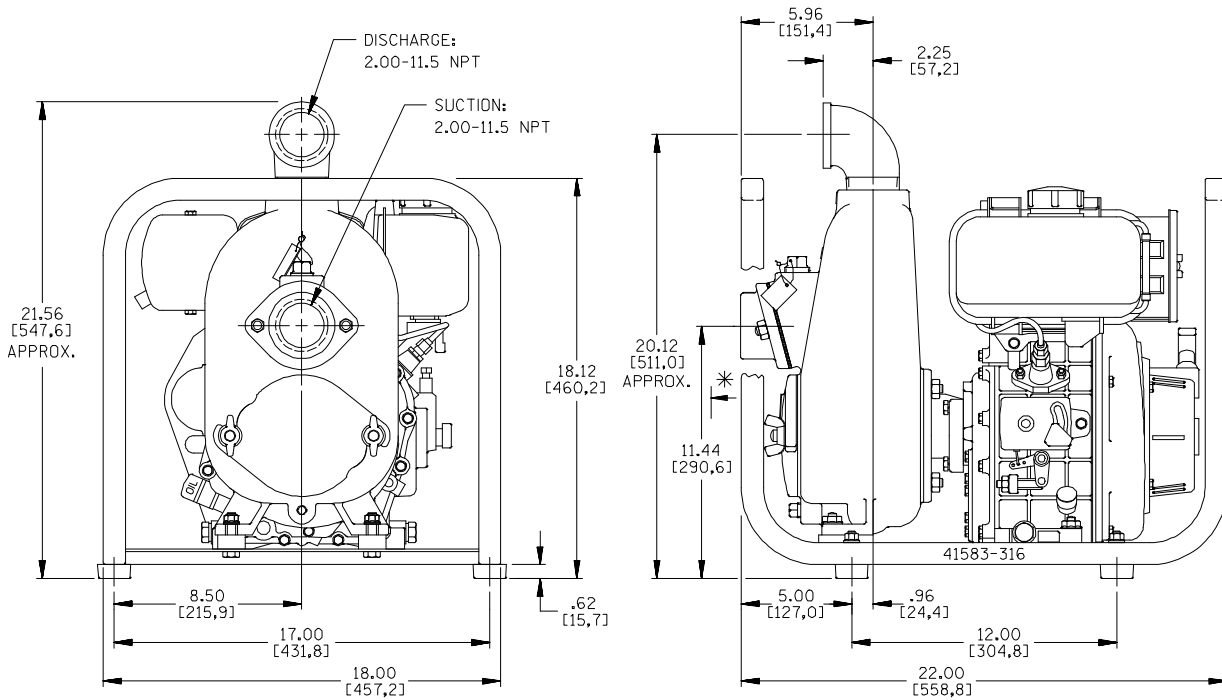
Printed in U.S.A.

Specification Data

APPROXIMATE DIMENSIONS and WEIGHTS

NET WEIGHT: 108 LBS. (49 KG.)
SHIPPING WEIGHT: 118 LBS. (54 KG.)
EXPORT CRATE: 5.6 CU. FT. (0,16 CU. M.)
WHEEL KIT (ADD): 25 LBS. (11,3 KG.);
SHIPPING CRATE (SEPARATE) 3 CU. FT. (0,1 CU. M.).

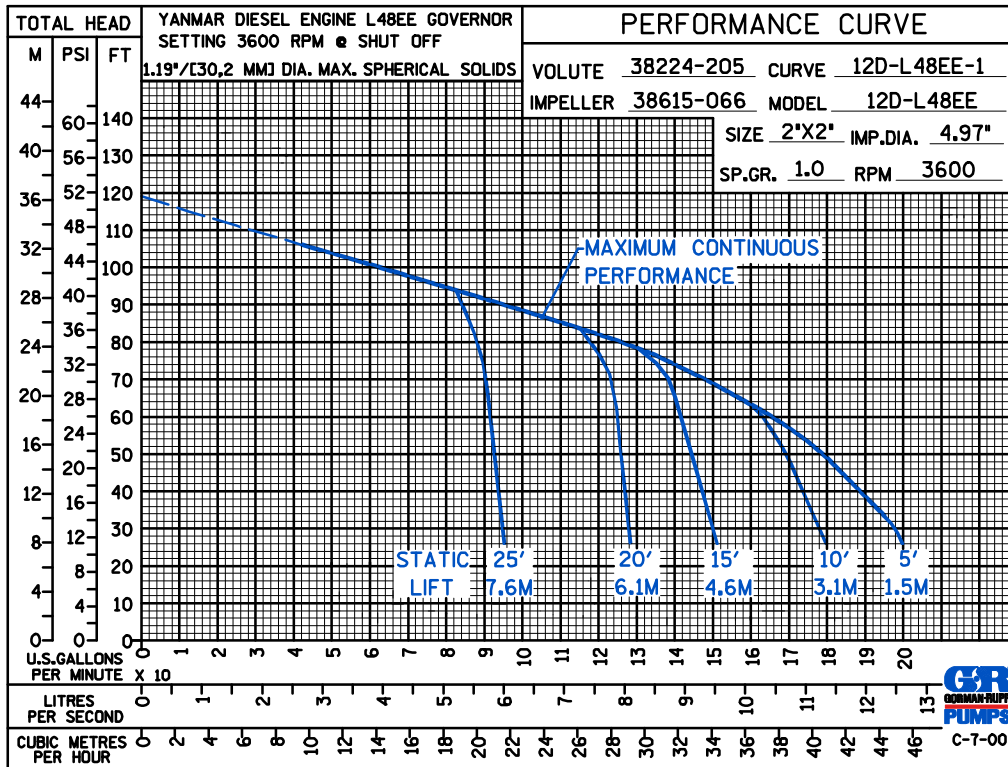
SECTION 45, PAGE 535



DIMENSIONS:
 INCHES
 [MILLIMETERS]

* 18.00/[25,4] RECOMMENDED FOR REMOVAL OF BACK COVER PLATE
 5.75/[146,0] REQUIRED FOR REMOVAL OF BACK COVER PLATE

POWERED BY YANMAR L48EE DIESEL ENGINE



THE GORMAN-RUPP COMPANY • MANSFIELD, OHIO

GORMAN-RUPP OF CANADA LIMITED • ST. THOMAS, ONTARIO, CANADA

Specifications Subject to Change Without Notice

Printed in U.S.A.