

A

Self Priming Centrifugal Pump



Gasoline Engine Driven

Model 12D-CH6

Size 2" x 2"



10MTC

Total Head		Capacity Of Pump In U.S. Gallons Per Minute (GPM) At Continuous Performance				
P.S.I.	Feet					
46.0	106	46	46	46	46	46
43.3	100	64	64	64	64	64
39.0	90	76	92	92	92	92
34.7	80	81	104	120	120	120
30.3	70	82	109	130	142	143
26.0	60	82	110	132	152	161
21.7	50	82	110	132	154	173
17.3	40	82	110	133	155	178
13.0	30	83	110	133	155	180
Suction Lift		25'	20'	15'	10'	5'



PUMP SPECIFICATIONS

- Size:** 2" x 2" NPT (51 mm x 51 mm) Female.
- Pump Casing:** Aluminum Alloy 356-T6 with Gray Iron No. 30 Cutwater Insert. Maximum Operating Pressure 70 psi (483 kPa).*
- Open Type, Two Vane Impeller:** Ductile Iron 65-45-12. Handles 1 3/16" (30 mm) Diameter Spherical Solids.
- Replaceable Wear Plate:** Carbon Steel Grade C-1045.
- Removable Cover Plate:** Aluminum No. 356-T6, 4 lbs. (1,8 kg).
- Intermediate Bracket:** Gray Iron No. 30.
- Seal:** Double, Grease-Lubricated with Spring-Loaded Grease Cup. Sintered Bronze Stationary Seal Seats. Steel Rotating Faces. Neoprene Packing Rings. Maximum Temperature of Liquid Pumped, 110°F (43°C).* Maximum Suction Pressure 10 psi (69 kPa).*
- Seal Liner:** Copper Alloy C26000.
- Flap Valve:** Buna-N with Nylon Reinforcement; Gray Iron No. 30.
- Flange:** Aluminum No. 356-T6.
- Gaskets:** Cork with Nitrile Binder (NC710) and Vegetable Fiber.
- Hardware:** Standard Plated Steel.
- Roll Cage with Rubber Feet.**
- Strainer.**
- 90° Discharge Elbow.**
- Optional Equipment:** Two Wheel Truck Assembly with 2.75" x 10" (70 mm x 254 mm) Semi-Pneumatic Tires.

* Consult Factory for Applications Exceeding Maximum Pressure and/or Temperature Indicated.

WARNING!

Do not use in explosive atmosphere or for pumping volatile flammable liquids.

ENGINE SPECIFICATIONS

- Model:** Kohler CH6 PT.
- Type:** Single Cylinder, Four Cycle, Air Cooled, Overhead Valve, Gasoline Engine.
- Displacement:** 10.98 Cu. In. (180 cc).
- Cylinder:** Aluminum w/cast iron sleeve.
- Governor:** Adjustable, Mechanical.
- Lubrication:** Splash System.
- Air Cleaner:** Dry Type, Dual Element.
- Fuel Tank:** 3.0 U.S. Quarts. (2,8 liters).
- Full Load Operating Time:** 2.3 Hrs.
- Starter:** Recoil.
- Ignition System:** Electronic, Solid State.
- Standard Equipment:** Muffler. ON-OFF Toggle Switch, Manual Throttle Control, Manual Choke Control. Oil Sentry™ Shut Down.

KOHLER

PUBLISHED PERFORMANCE:

Maximum Continuous BHP 4.7 (3,5 kW) @ 3600 RPM
Maximum Dynamic BHP 5.5 (4,1 kW) @ 3600 RPM



THE GORMAN-RUPP COMPANY • MANSFIELD, OHIO

www.gormanrupp.com

GORMAN-RUPP OF CANADA LIMITED • ST. THOMAS, ONTARIO, CANADA

Specifications Subject to Change Without Notice

Printed in U.S.A.

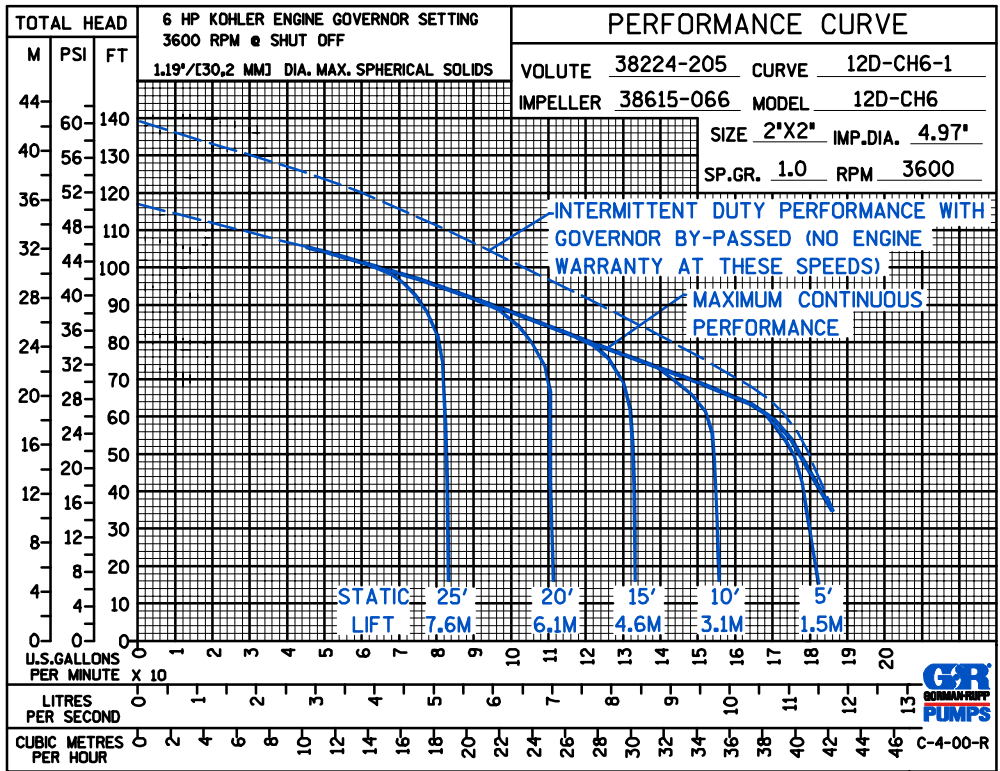
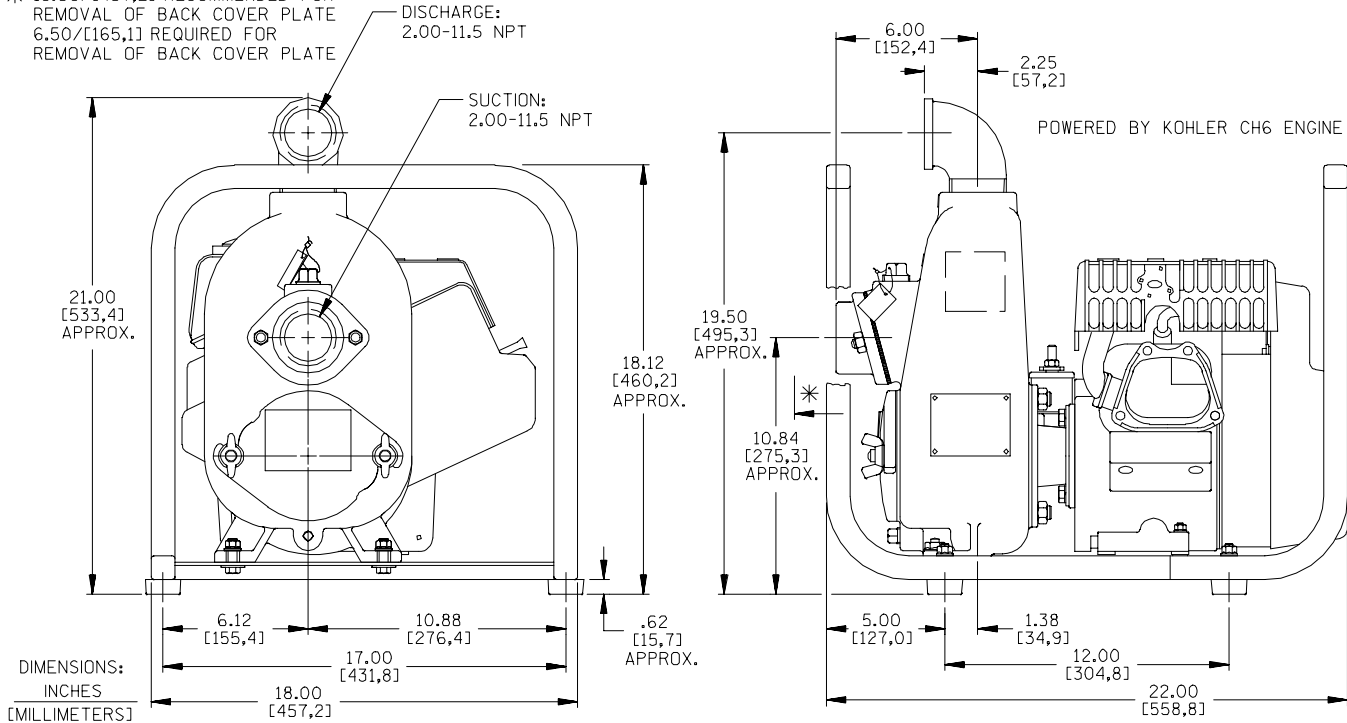
Specification Data

APPROXIMATE DIMENSIONS and WEIGHTS

NET WEIGHT: 77 LBS. (35 KG.)
 SHIPPING WEIGHTS: 95 LBS. (43 KG.)
 EXPORT CRATE: 5.7 CU. FT. (0,16 CU. M.)
 WHEEL KIT ADD 25 LBS. (11.3 KG.); SHIPPING CRATE (SEPARATE) 3 CU. FT. (0,1 CU. M.)

SECTION 45, PAGE 526

* 18.00/[457,2] RECOMMENDED FOR REMOVAL OF BACK COVER PLATE
 6.50/[165,1] REQUIRED FOR REMOVAL OF BACK COVER PLATE



THE GORMAN-RUPP COMPANY • MANSFIELD, OHIO

GORMAN-RUPP OF CANADA LIMITED • ST. THOMAS, ONTARIO, CANADA

Specifications Subject to Change Without Notice

Printed in U.S.A.