

A C E G

Gasoline Engine Driven



Self Priming Centrifugal Pump

Model 12D-11

Size 2" x 2"



10MTC

Total Head		Capacity Of Pump In U.S. Gallons Per Minute (GPM) At Continuous Performance				
P.S.I.	Feet					
56.4	130	37	37	37	37	37
52.0	120	61	61	61	61	61
47.7	110	81	84	84	84	84
43.4	100	85	105	106	106	106
39.0	90	85	115	129	129	129
34.7	80	85	114	138	149	149
30.3	70	85	115	140	163	166
26.0	60	85	115	141	166	180
21.7	50	86	116	141	167	187
17.3	40	86	116	142	169	188
Suction Lift		25'	20'	15'	10'	5'



PUMP SPECIFICATIONS

- Size:** 2" x 2" (51 mm x 51 mm) NPT - Female.
- Casing:** Aluminum Alloy 356-T6 w/Gray Iron 30 Cutwater Insert. Maximum Operating Pressure 94 psi (648 kPa).*
- Semi-Open Type, Two Vane Impeller:** Ductile Iron 65-45-12. Handles 1 3/16" (30,2 mm) Diameter Spherical Solids.
- Replaceable Wear Plate:** Carbon Steel 1026.
- Removable Cover Plate:** Aluminum Alloy 356-T6; 4 lbs. (1,8 kg).
- Intermediate Bracket:** Gray Iron 30.
- Seal:** Double, Grease-Lubricated with Spring-Loaded Grease Cup. Sintered Bronze Stationary Seal Seats. Steel Rotating Faces. Neoprene Packing Rings. Maximum Temperature of Liquid Pumped, 110°F (43°C). Maximum Suction Pressure 10 psi (69 kPa).*
- Seal Liner:** Copper Alloy C26000.
- Flap Valve:** Buna-N with Nylon Reinforcement; Gray Iron 30.
- Suction Flange:** Aluminum Alloy 356-T6.
- Gaskets:** Cork with Nitrile Binder (NC710) and Vegetable Fiber.
- Hardware:** Standard Plated Steel.
- Roll Cage with Rubber Feet.**
- Strainer.**
- 90° Ductile Iron Discharge Elbow.**
- Optional Equipment:** Wheel Kit with 2.75" x 10" (70 mm x 254 mm) Semi-Pneumatic Tires.

**Consult Factory for Applications Exceeding Maximum Pressure and/or Temperature Indicated.*

WARNING!

Do not use in explosive atmosphere or for pumping volatile flammable liquids.

ENGINE SPECIFICATIONS

- Model:** Briggs & Stratton Model 11.
- Type:** Single Cylinder, Four Cycle, Air Cooled, Overhead Valve, Gasoline Engine.
- Displacement:** 11.57 Cu. In. (190 cc).
- Carburetor:** Side Draft Venturi.
- Governor:** Mechanical.
- Lubrication:** Splash System.
- Air Cleaner:** Paper Element.
- Oil Reservoir:** 20 U.S. Oz. (0,6 Liter).
- Fuel Tank:** 3.0 U.S. Quarts. (2,8 Liters).
- Full Load Operating Time:** 2.1 Hrs.
- Starter:** Rope Rewind.

Standard Features: Magnetron Ignition. Manual Throttle Control with Top Speed Limit. Manual Choke and Stop. Dual Oil Fill/ Drain Plugs. Muffler w/Guard.

BRIGGS & STRATTON PUBLISHED PERFORMANCE:

Maximum Continuous BHP 5.1 (3,8 kW) @ 3600 RPM
Maximum Dynamic BHP 5.5 (4,1 kW) @ 3600 RPM



THE GORMAN-RUPP COMPANY • MANSFIELD, OHIO

GORMAN-RUPP OF CANADA LIMITED • ST. THOMAS, ONTARIO, CANADA

www.grpumps.com
Specifications Subject to Change Without Notice

Printed in U.S.A.

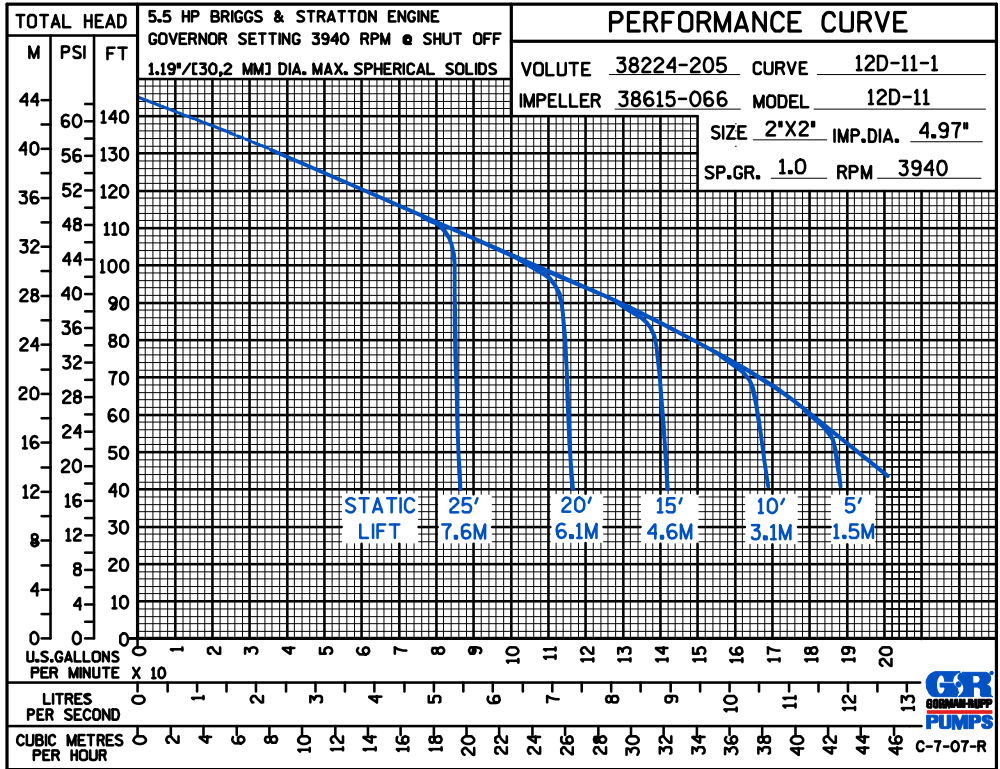
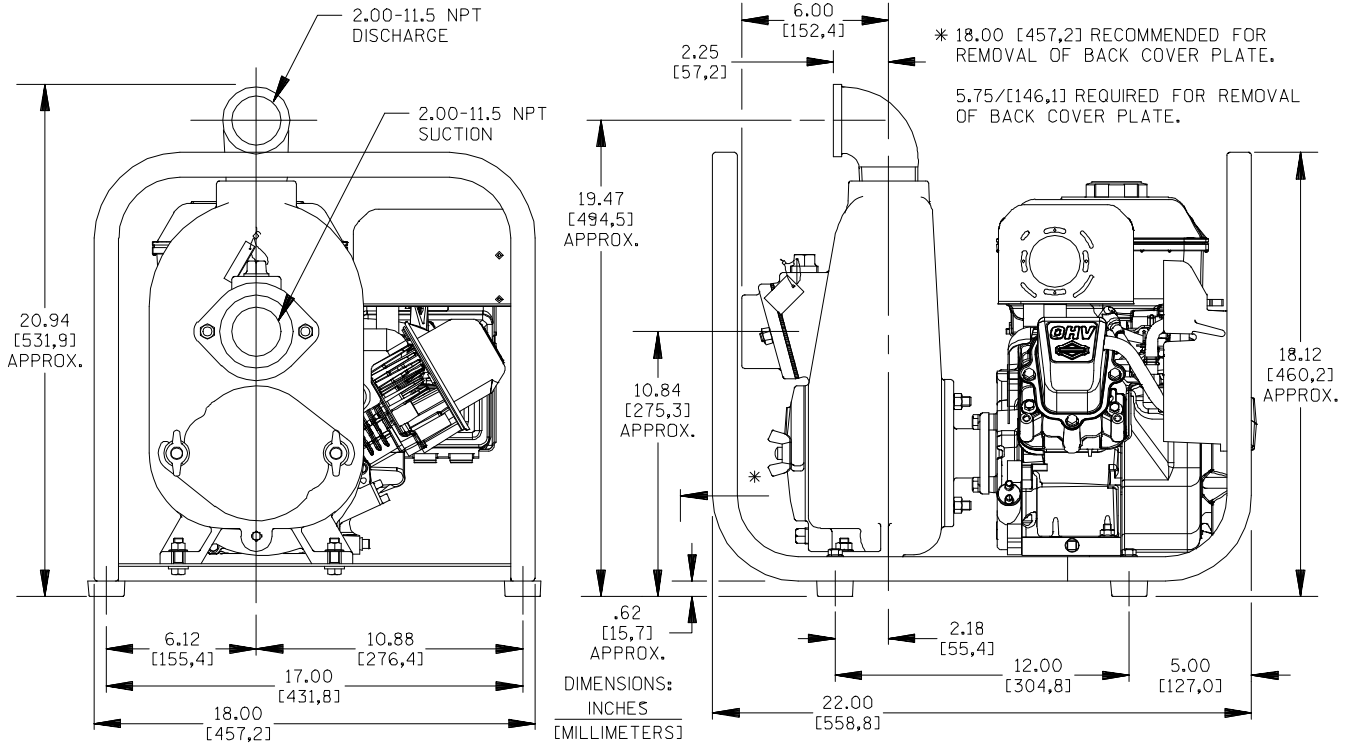
Specification Data

APPROXIMATE DIMENSIONS and WEIGHTS

NET WEIGHT: 83 LBS. (37,6 KG.)
SHIPPING WEIGHTS: 91 LBS. (41,3 KG.)
EXPORT CRATE: 4 CU. FT. (0,11 CU. M.)
WHEEL KIT ADD 25 LBS. (11,3 KG.); SHIPPING CRATE (SEPARATE) 3 CU. FT. (0,1 CU. M.)

SECTION 45, PAGE 520

POWERED BY BRIGGS & STRATTON 5.5 H.P. GASOLINE ENGINE



THE GORMAN-RUPP COMPANY • MANSFIELD, OHIO

GORMAN-RUPP OF CANADA LIMITED • ST. THOMAS, ONTARIO, CANADA

Specifications Subject to Change Without Notice

Printed in U.S.A.