

ACE

Self Priming Centrifugal Pump

Gasoline Engine Driven

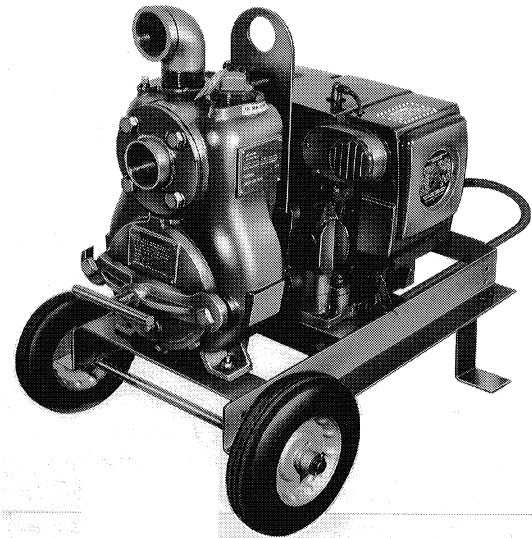
Model 12C2-M8

Size 2" x 2"



11MT

Total Head		CAPACITY OF PUMP IN U.S. GALLONS PER MINUTE AT CONTINUOUS PERFORMANCE				
P.S.I.	Feet					
39	89	45	45	45	45	45
35	80	79	85	85	85	85
30	70	83	112	127	127	127
26	60	84	114	143	165	165
22	50	85	115	144	171	187
17	40	86	116	144	172	188
13	30	87	117	142	172	189
18	20	88	117	145	173	192
Suction lift		25'	20'	15'	10'	5'



PUMP SPECIFICATIONS

Size: 2" [50,8 mm] x 2" [50,8 mm] N.P.T.-Female
 Casing: Gray Iron No. 30
 (Maximum Operating Pressure 60 psi. [414 kPa])
 Impeller: Open Type, Two Vanes, Ductile Iron No. 60-40-18
 (Handles 1 1/2" [38,1 mm] Dia. Spherical Solids)
 Wear Plate-Replaceable: Steel No. 1018
 Cover Plate-Removable: Gray Iron No. 30 (12 lbs. [.34 kg.])
 Intermediate Bracket: Gray Iron No. 30
 Seal: Double Grease-Lubricated with Spring Loaded Grease Cup. Sintered Bronze Stationary Seal Seats. Rotating Faces Are Steel. Maximum Temperature of Liquid Pumped, 110°F [43°C]
 Maximum Suction Pressure 10 Pounds Per Square Inch [69 kPa].
 Seal Liner: Brass No. 70-30
 Flap Valve: Buna-N with Nylon Reinforcing; Gray Iron No. 30
 Flange: Steel No. 1018
 Gaskets: Rubber; Vegetable Fiber
 Hardware: Standard Plated Steel
Standard Equipment:
 Hoisting Bail
 Base
 90° Discharge Elbow
 Strainer
Optional Equipment:
 2 Wheel Truck Assy with Semi-Pneumatic Tires,
 2.75" [69,9 mm] x 10" [254,0 mm]

ENGINE SPECIFICATIONS

Model: Kohler M8PT
 Type: Single Cylinder, Four Cycle,
 Air Cooled, Gasoline Engine
 Displacement: 18.64 Cu. In. [.31 L]
 Governor: Mechanical
 Carburetor: Fixed Jet
 Lubrication: Splash System
 Air Cleaner: Dry Type, Dual Element
 Oil Reservoir: 2.5 U.S. Pints [1.2 L]
 Fuel Tank: 1.25 U.S. Gallons [4.7 L]
 Operating Time; Full Load: 2.0 Hours
 Starter: Rope Rewind
Standard Features:
 Muffler
 "Oil Sentry™" Low Oil Shut Down
 Manual Throttle and Choke Control
Optional:
 12 Volt Starter/Generator

KOHLER PUBLISHED PERFORMANCE:

Max. Cont. B.H.P. 6.4 @ 3600 RPM
 Max. Dyn. B.H.P. 8.0 @ 3600 RPM



THE GORMAN-RUPP COMPANY • MANSFIELD, OHIO

GORMAN-RUPP OF CANADA LIMITED • ST. THOMAS, ONTARIO, CANADA

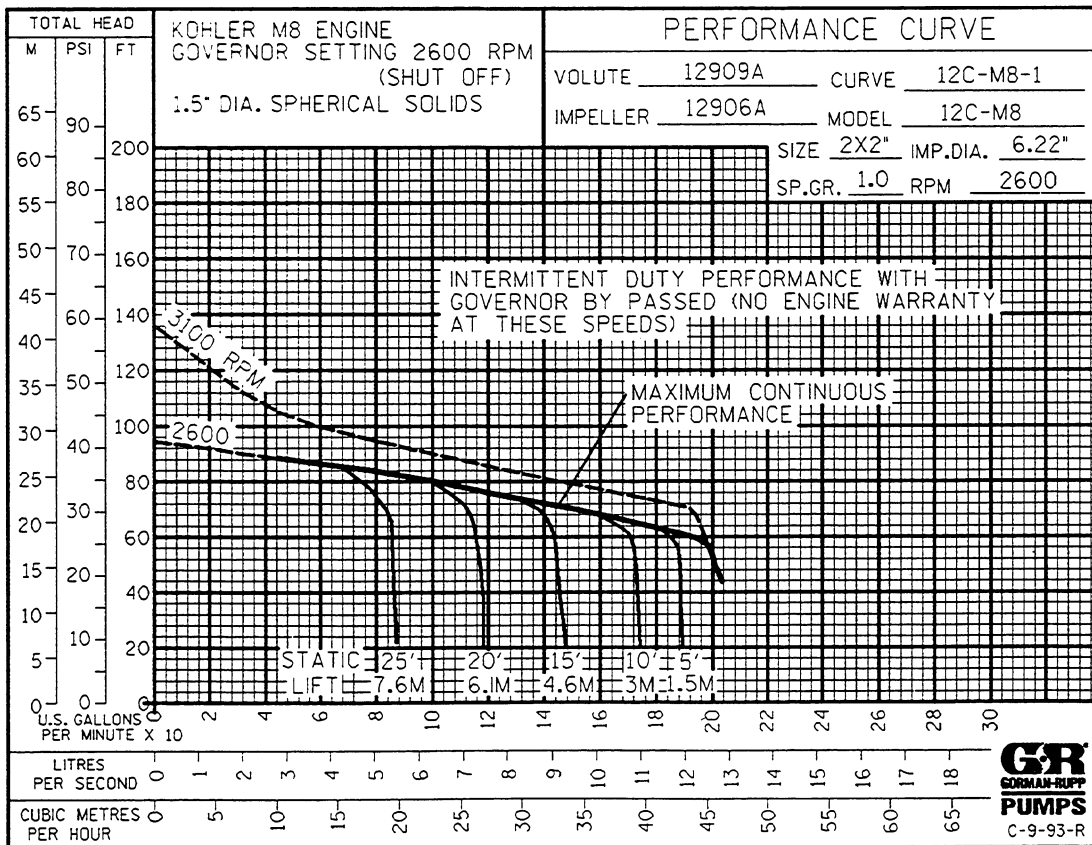
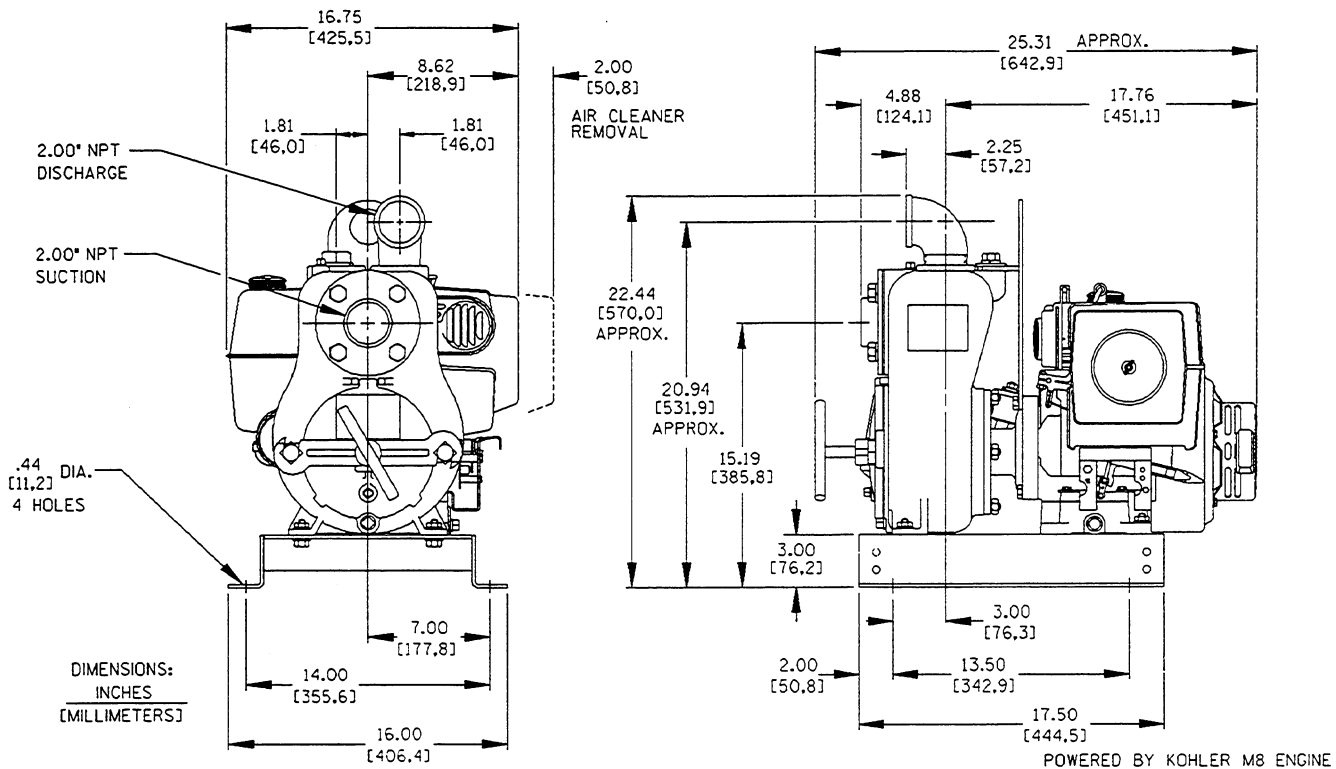
Printed in U.S.A.

Specification Data

SECTION 45, PAGE 500

**OVERALL DIMENSIONS
and
WEIGHTS APPROXIMATE**

NET WEIGHT:	SKID BASE 202 LBS. [32 KG.]	2-WHEEL 227 LBS. [103 KG.]
SHIPPING WEIGHT:	217 LBS. [98 KG.]	242 LBS. [110 KG.]
EXPORT CRATE:	10.0 CU. FT. [.28 CU. M.]	12.0 CU. FT. [.34 CU. M.]



THE GORMAN-RUPP COMPANY • MANSFIELD, OHIO

GORMAN-RUPP OF CANADA LIMITED • ST. THOMAS, ONTARIO, CANADA

Printed in U.S.A.