

Priming Assisted Centrifugal Pump w/Autostart



Model PAH10B60-6135H FT4 Size 12" x 10"



Total Head		Capacity of Pump in U.S. Gallons per Minute (GPM) at Continuous Performance				
P.S.I.	Feet					
156.0	360	N/A	1500	1500	1500	1500
138.7	320	N/A	3195	3750	3750	3750
121.4	280	N/A	3275	4190	4900	4900
118.8	274	1200	3275	4200	5095	5095
140.0	240	2140	3280	4220	5200	5720
86.7	200	2190	3290	4230	5210	5780
69.3	160	2200	3300	4240	5220	5800
52.0	120	2200	3300	4240	5250	5800
34.7	80	2200	3300	4240	5250	5810
17.3	40	2210	3310	4250	5260	5820
Suction Lift	±25'	20'	15'	10'	6'	

‡ Suction Lift Based On 1600 RPM Engine Speed.

PUMP SPECIFICATIONS

Size: 12" x 10" (305 mm x 254 mm) Flanged.

Casing: Ductile Iron 65-45-12.

Maximum Casing Pressure 250 psi (1723 kPa).
Maximum Operating Pressure 250 psi (1723 kPa) at Temperatures up to 100 F (37 C) Based on System Component Limitations.*

Enclosed Type, Four Vane Impeller: Ductile Iron 80-55-06.

Handles 2" (50,8 mm) Diameter Spherical Solids.

Impeller Shaft: Alloy Steel 4150M.

Replaceable Wear Ring: Ductile Iron 65-45-12.

Bearing Pedestal: Gray Iron 30.

Seal Plate: Ductile Iron 65-45-12.

Seal: Mechanical, SAE Non-Detergent Oil-Lubricated. Silicon Carbide Rotating Face and Stationary Seat. Fluorocarbon Elastomers (DuPont Viton® or Equivalent). Stainless Steel 18-8 Cage and Spring. Maximum Temperature of Liquid Pumped, 160°F (71°C).*

Shaft Sleeve: Stainless Steel 303/304.

Priming Chamber: Gray Iron 30 Housing w/Stainless Steel Float and Linkage.

Discharge Check Valve: Ductile Iron Housing w/Buna-N Flapper.

Radial Bearing: Open Single Ball.

Thrust Bearing: Open Double Ball.

Bearing Cavity Lubrication: Lithium EP2 Grease.

Suction Spool: Gray Iron 30.

Gaskets: Resistant Synthetic Rubber, Vegetable Fiber w/Compressed Synthetic Fibers.

O-Rings: Buna-N.

Hardware: Standard Plated Steel.

Seal Cavity Oil Level Sight Gauges.

*Consult Factory for Applications Exceeding Maximum Pressure and/or Temperature Indicated.

Standard Equipment: Gear-Driven Air Compressor. Hoisting Bail. Combination Skid Base w/Fuel Tank. **Full Feature Control Panel Single Ball Type Float Switch.****

Optional Equipment: Battery. Strainer. Suction Vacuum and Discharge Pressure Gauge Kit. Liquid Level Sensor. Threaded Flange Kit. Trailer Assembly.

**50 Ft. (15 m) Standard Length; Dual Switches and Alternate Cable Lengths Available From the Factory.



ENGINE SPECIFICATIONS

Model: John Deere 6135HFC09

EPA Tier: Tier 4.

Type: Six Cylinder, Charge Air Cooled, Diesel Engine. Enclosed w/Air Compressor

Displacement: 824 Cu. In. (13,5 liters).

Governor: Electronic Isochronous.

Lubrication: Forced Circulation.

Air Cleaner: Dry Type.

Fuel Tank: 284 U.S. Gals. (1075 liters).

Full Load Operating Time: 12.1 Hrs.

Starter: 12V Electric.

Optional Features: Electronic Fuel Level Sensor.

Engine Control Features: Padlockable Box with Throttle Control, Tachometer, Coolant Temperature, Oil Pressure, Voltage and Overstart Indicators/Shutdowns. Manual/Stop/Auto Keyswitch. Audible Start-up Warning Delay. Fuel Level Display/Alarm/Shutdown (For Use With Optional Fuel Level Sensor). Muffler w/Weather Cap.

JOHN DEERE PUBLISHED PERFORMANCE:

Maximum Gross BHP (Intermittent)
600 (448 kW) @ 2100 RPM



GORMAN-RUPP PUMPS

www.grpumps.com

Specifications Subject to Change Without Notice

Printed in U.S.A.

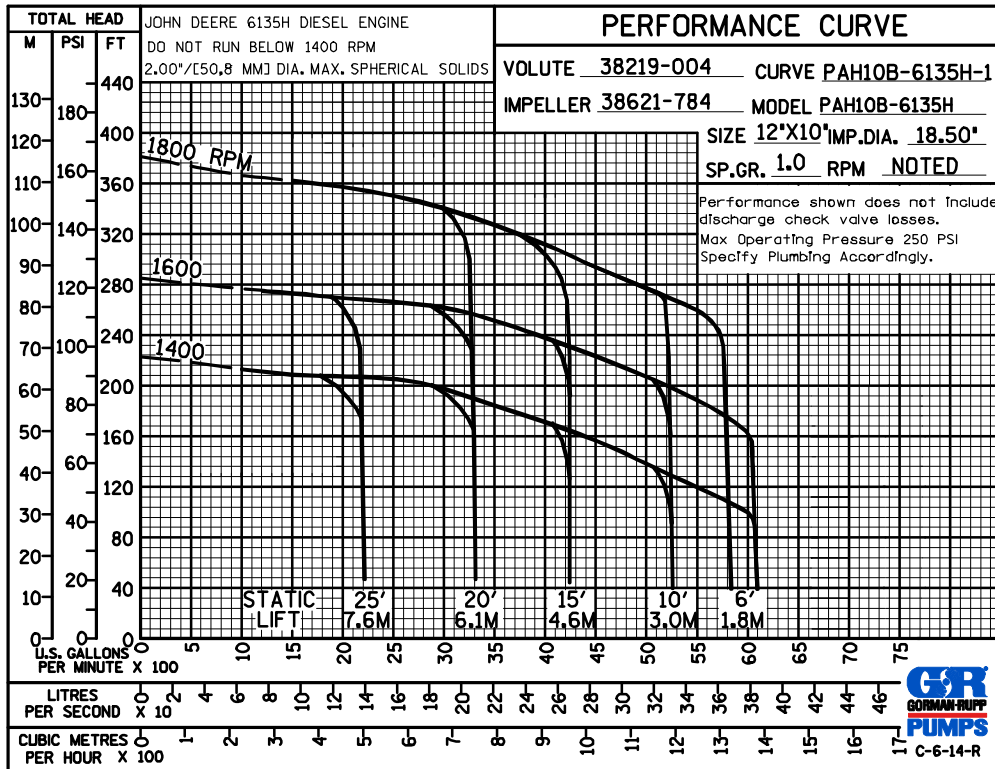
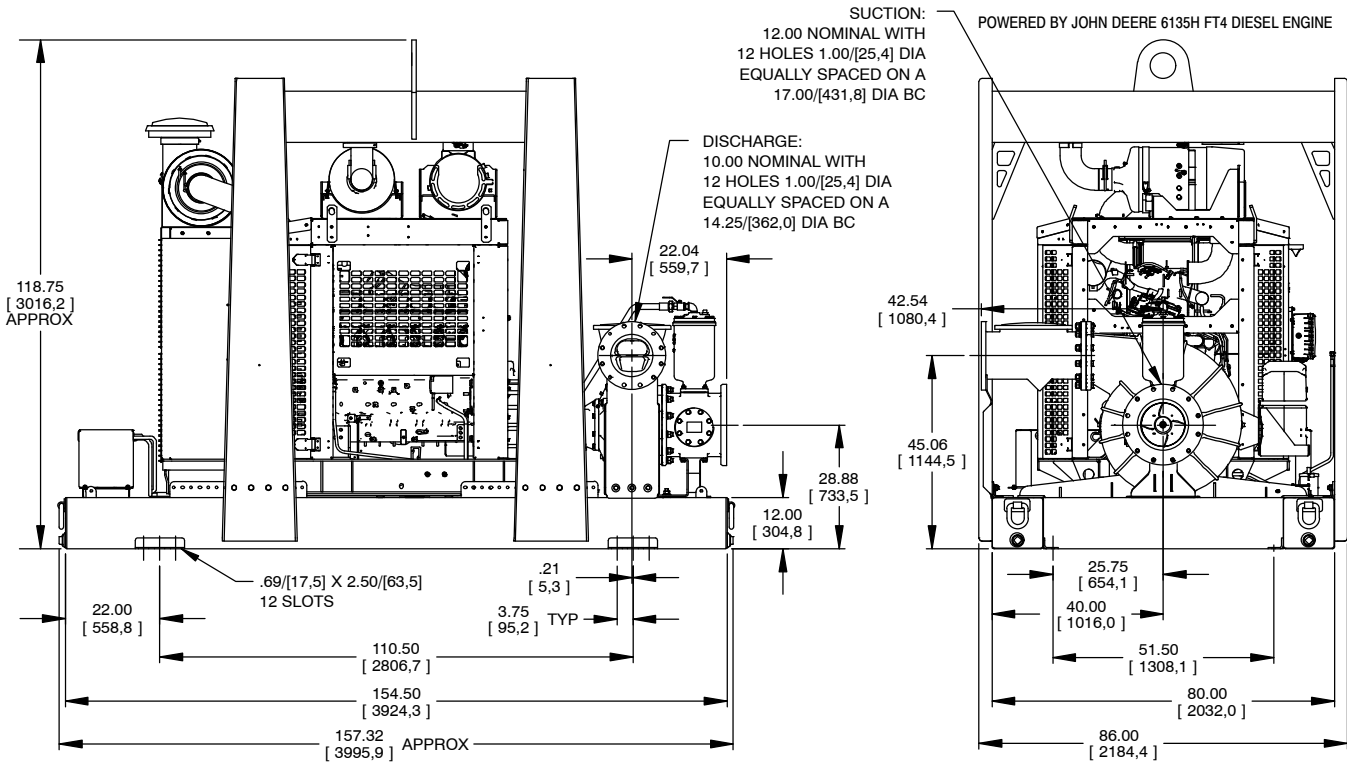
Specification Data

SECTION 43, PAGE 505

APPROXIMATE
DIMENSIONS and
WEIGHTS

NET WEIGHT:
SHIPPING WEIGHT:
EXPORT CRATE SIZE:

12,500 LBS. (5670 KG.)
12,750 LBS. (5783 KG.)
1021 CU. FT. (28,9 CU. M.)



GORMAN-RUPP PUMPS

www.grpumps.com

Specifications Subject to Change Without Notice

Printed in U.S.A.