



**Priming Assisted Centrifugal Pump  
w/Autostart  
Model PAH8A60-6090H  
Size 10" x 8"**



Total Head		Capacity of Pump in U.S. Gallons per Minute (GPM) at Continuous Performance			
P.S.I.	Feet				
133.5	308	950	950	950	950
121.4	280	1650	1650	1650	1650
104.0	240	1950	3000	3200	3200
86.7	200	1950	3100	3850	4250
69.4	160	1950	3100	4000	4600
52.0	120	1950	3100	4000	4825
34.7	80	1950	3100	4025	4900
17.3	40	1950	3100	4050	4900
<b>Suction Lift</b>		<b>25'</b>	<b>20'</b>	<b>15'</b>	<b>10'</b>



**PUMP SPECIFICATIONS**

**Size:** 10" x 8" (254 mm x 203 mm) Flanged.  
**Casing:** Ductile Iron 65-45-12.  
 Maximum Operating Pressure 222 psi (1531 kPa).\*  
**Enclosed Type, Two Vane Impeller:** Ductile Iron 65-45-12.  
 Handles 3" (76,2 mm) Diameter Spherical Solids.  
**Suction Head:** Gray Iron 30.  
**Suction Spool:** Gray Iron 30.  
**Impeller Shaft:** Alloy Steel 4150M.  
**Replaceable Wear Ring:** Ductile Iron 65-45-12.  
**Bearing Pedestal:** Gray Iron 30.  
**Seal Plate:** Gray Iron 30.  
**Seal:** Mechanical, SAE 30 Non-Detergent Oil-Lubricated. Silicon Carbide Rotating Face and Stationary Seat. Fluorocarbon Elastomers (DuPont Viton® or Equivalent). Stainless Steel 316 Cage and Stainless Steel 18-8 Spring. Maximum Temperature of Liquid Pumped 160 F (71 C).\*  
**Shaft Sleeve:** Stainless Steel 303/304.  
**Priming Chamber:** Gray Iron 30 Housing w/Stainless Steel Float and Linkage.  
**Discharge Check Valve:** Ductile Iron Housing w/Buna-N Flapper.  
**Radial Bearing:** Open Roller.  
**Thrust Bearing:** Open Double Ball.  
**Bearing Cavity Lubrication:** Lithium EP2 Grease.  
**Gaskets:** Vegetable Fiber.  
**O-Rings:** Buna-N.  
**Hardware:** Standard Plated Steel.  
**Seal Cavity Oil Level Sight Gauges.**  
*\*Consult Factory for Applications Exceeding Maximum Pressure and/or Temperature Indicated.*  
**Standard Equipment:** Strainer. Gear-Driven Air Compressor. Hoisting Bail. Combination Skid Base w/Fuel Tank. Single Ball Type Float Switch.\*\*  
**Optional Equipment:** Battery. Heated Priming Chamber Kit. Suction Vacuum and Discharge Pressure Gauge Kit. Tandem Axle Over-the-Road Trailer (Meets DOT Requirements) Available w/Either Electric or Hydraulic Surge Brakes, Running Lights, Jack Stands and Safety Chains/Cables. EPS w/ Submersible Transducer Liquid Level Sensor (50 Ft. [15M] Cable Standard, Alternate Lengths Available). Threaded Flange Kit.  
**\*\*50 Ft. (15 m) Standard Length; Dual Switches and Alternate Cable Lengths Available From the Factory.**

**WARNING!**  
Do not use in explosive atmosphere or for pumping volatile flammable liquids.

**ENGINE SPECIFICATIONS**

**Model:** John Deere 6090H "Power Tech."  
**Type:** Six Cylinder, Four Cycle, Charge Air Cooled, Enclosed, Liquid Cooled Diesel Engine.  
**Displacement:** 548 Cu. In. (9,0 liters).  
**Governor:** Electronic Isochronous.  
**Lubrication:** Forced Circulation.  
**Air Cleaner:** Dry Type.  
**Fuel Tank:** 262 U.S. Gals. (992 liters).  
**Full Load Operating Time:** 17.9 Hrs.  
**Starter:** 12V Electric.  
**Standard Features:** Low Oil Pressure, High Coolant Temperature and Start Failure Safety Shut Down Switches/Indicators. Throttle Control. Autostart Instrument Panel Includes: Tachometer, Voltmeter, Hourmeter, Coolant Temperature and Oil Pressure Indicators, Manual/Stop/Auto Key Switch, 10 Amp Fuse, Audible Startup Warning Delay. Muffler w/Weather Cap.

**JOHN DEERE PUBLISHED PERFORMANCE:**  
 Maximum Gross BHP (Intermittent)  
 375 (280 kW) @ 2200 RPM



GORMAN-RUPP PUMPS

www.grpumps.com

Specifications Subject to Change Without Notice

Printed in U.S.A.

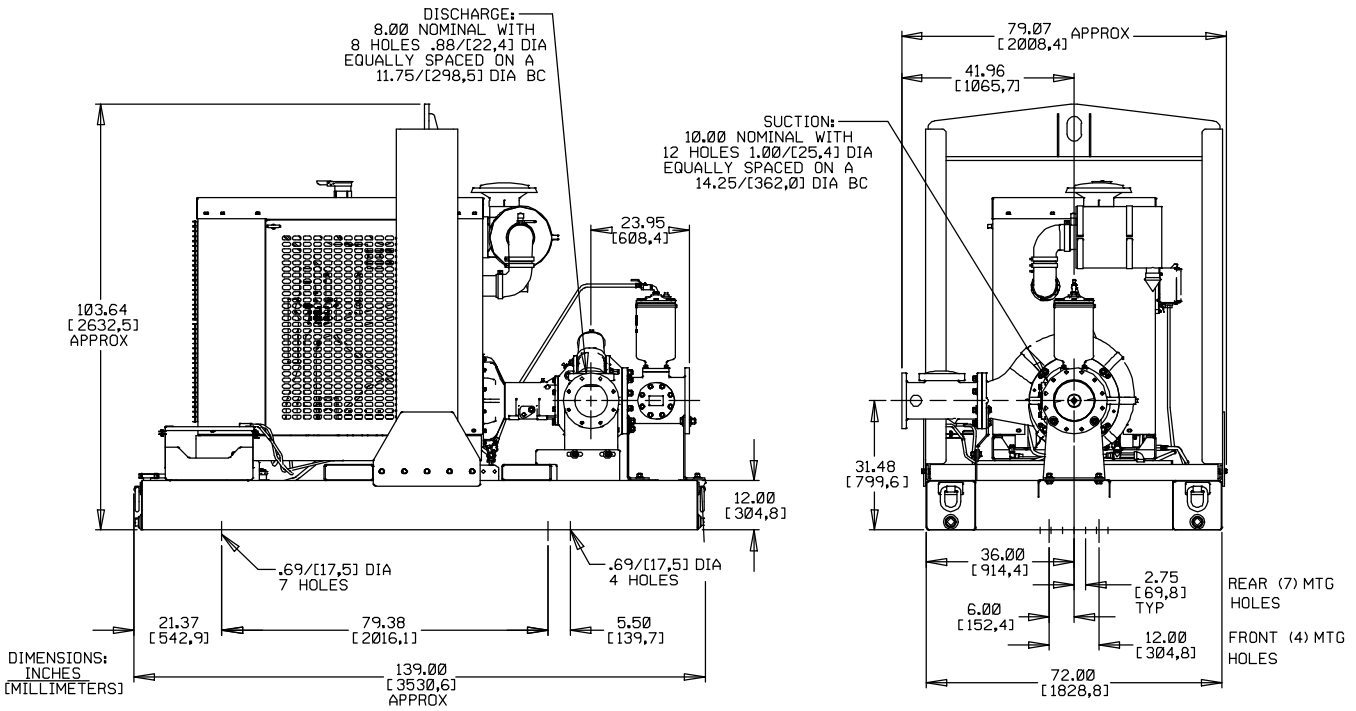
**Specification Data**

APPROXIMATE DIMENSIONS and WEIGHTS

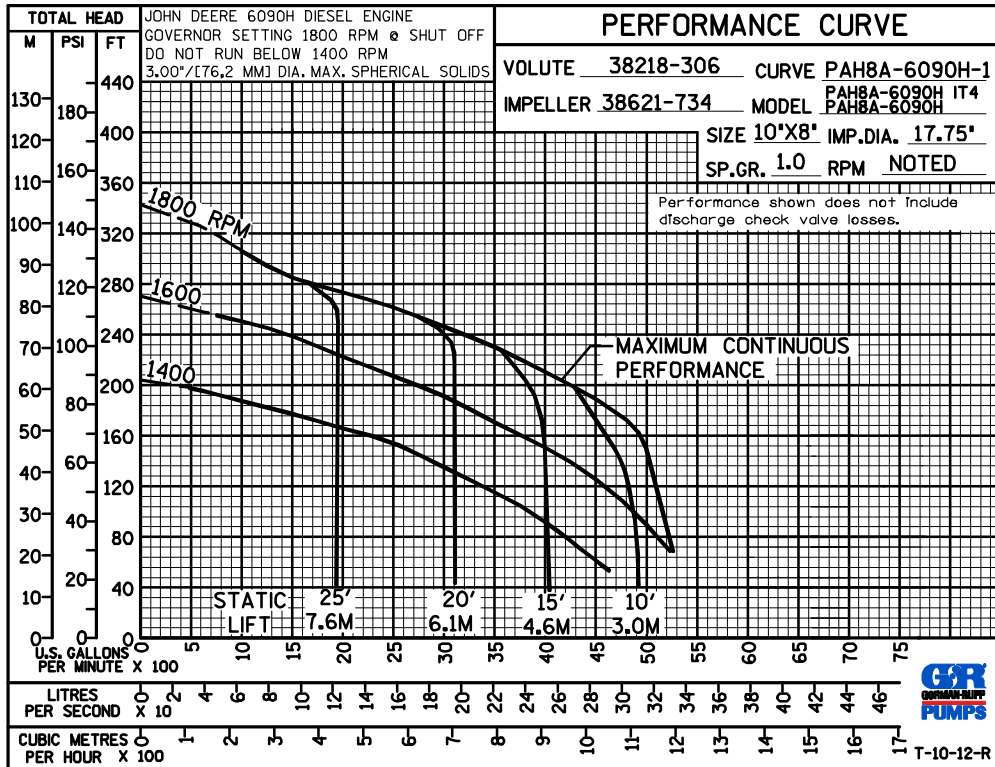
**NET WEIGHT:**  
**SHIPPING WEIGHT:**  
**EXPORT CRATE SIZE:**

**9150 LBS (4150,4 KG)**  
**9550 LBS (4331,8 KG)**  
**719 CU. FT. (20 CU. M.)**

SECTION 43, PAGE 410



POWERED BY: JOHN DEERE 6090H DIESEL ENGINE



**GORMAN-RUPP PUMPS**

www.grpumps.com

Specifications Subject to Change Without Notice

Printed in U.S.A.