



Priming Assisted Centrifugal Pump w/Autostart Model PAH6B60-6068H FT4 Size 10" x 6"



| Total Head | | Capacity of Pump in U.S. Gallons per Minute (GPM) at Continuous Performance | | | |
|---------------------|------|---|------------|------------|------------|
| P.S.I. | Feet | | | | |
| 107.5 | 248 | 350 | 350 | 350 | 350 |
| 97.5 | 225 | 1200 | 1200 | 1200 | 1200 |
| 86.7 | 200 | 1600 | 2000 | 2000 | 2000 |
| 75.9 | 175 | 1630 | 2640 | 2750 | 2750 |
| 65.0 | 150 | 1620 | 2700 | 3275 | 3320 |
| 54.2 | 125 | 1620 | 2700 | 3450 | 3790 |
| 43.4 | 100 | 1610 | 2700 | 3520 | 4050 |
| Suction Lift | | 25' | 20' | 15' | 10' |

PHOTO NOT AVAILABLE AT TIME OF PUBLISHING

PUMP SPECIFICATIONS

Size: 10" x 6" (254 mm x 152 mm) Flanged.

Casing: Ductile Iron 65-45-12.

Maximum Operating Pressure 164 psi (1131 kPa).*

Enclosed Type, Two Vane Impeller: Ductile Iron 65-45-12.

Handles 3" (76,2 mm) Diameter Spherical Solids.

Suction Head: Gray Iron 30.

Suction Spool: Gray Iron 30.

Impeller Shaft: Alloy Steel 4150M.

Externally Adjustable, Replaceable Wear Ring: Ductile Iron 65-45-12.

Bearing Pedestal: Gray Iron 30.

Seal Plate: Gray Iron 30.

Seal: Mechanical, SAE 30 Non-Detergent Oil-Lubricated. Silicon Carbide Rotating Face and Stationary Seat. Fluorocarbon Elastomers (DuPont Viton® or Equivalent). Stainless Steel 316 Cage and Stainless Steel 18-8 Spring. Maximum Temperature of Liquid Pumped 160°F (71°C).*

Shaft Sleeve: Stainless Steel 303/304.

Priming Chamber: Gray Iron 30 Housing w/Stainless Steel Float and Linkage.

Discharge Check Valve: Ductile Iron Housing w/Buna-N Flapper.

Radial Bearing: Open Roller.

Thrust Bearing: Open Double Ball.

Bearing Cavity Lubrication: Lithium EP2 Grease.

Gaskets: Vegetable Fiber.

O-Rings: Buna-N.

Hardware: Standard Plated Steel.

Seal Cavity Oil Level Sight Gauges.

*Consult Factory for Applications Exceeding Maximum Pressure and/or Temperature Indicated.

Standard Equipment: Gear-Driven Air Compressor. Hoisting Bail. [Full Feature Control Panel](#) Combination Skid Base w/Fuel Tank. [Single Ball Type Float Switch](#).**

**50 Ft. (15 m) Standard Length; Dual Switches and Alternate Cable Lengths Available From the Factory.

Optional Equipment: Battery. Strainer. Skid Drag Base Kit. NPT Threaded Flange Kit. Suction Vacuum and Discharge Pressure Gauge Kit. High Speed (55 MPH/89 KM/H) Tandem Axle Pneumatic-Tired Wheel Kit w/wo DOT-Approved Lights and Electric Brakes. [Tandem Axle Over-the-Road Trailer](#) (Meets DOT Requirements) Available w/Either Electric or Hydraulic Surge Brakes, Running Lights, Jack Stands and Safety Chains/Cables. Liquid Level Transducer.



ENGINE SPECIFICATIONS

Model: John Deere 6068HFC08.

EPA Tier: Final Tier 4.

Type: Six Cylinder, Charge-Air Cooled Diesel Engine. Enclosed. With Air Compressor

Displacement: 415 Cu. In. (6,8 liters).

Lubrication: Forced Circulation.

Air Cleaner: Dry Type.

Fuel Tank: 131 U.S. Gals. (496 liters).

Full Load Operating Time: 13.1 Hrs.

Starter: 12V Electric.

Standard Features: Muffler w/Guard and Weather Cap, DOC/DPF and SCR Exhaust After-Treatment System.

Optional: Electronic Fuel Level Sensor.

Engine Control Features: Padlockable Box with Throttle Control, Tachometer, Coolant Temperature, Oil Pressure, Voltage and Overstart Indicators/Shut-downs. Manual/Stop/Auto Keyswitch. Audible Startup Warning Delay. Fuel Level Display/Alarm/Shutdown (For Use With Optional Fuel Level Sensor).

JOHN DEERE PUBLISHED PERFORMANCE:

Maximum Gross BHP (Intermittent)
250 (187 kW) @ 2400 RPM



GORMAN-RUPP PUMPS

www.grpumps.com

Specifications Subject to Change Without Notice

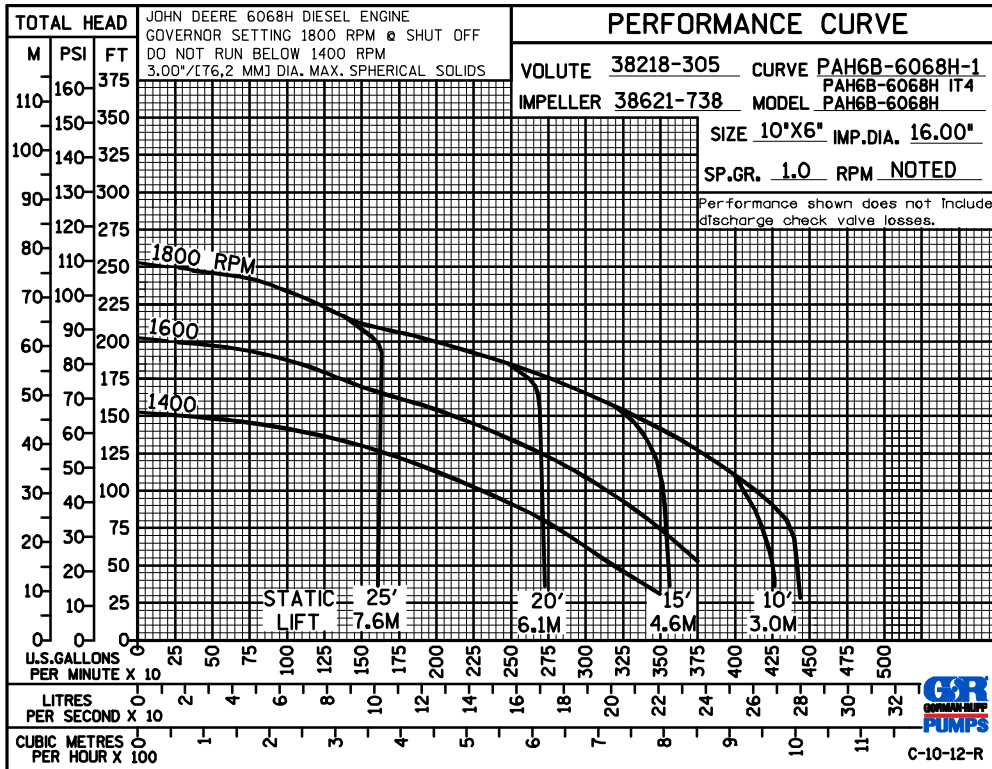
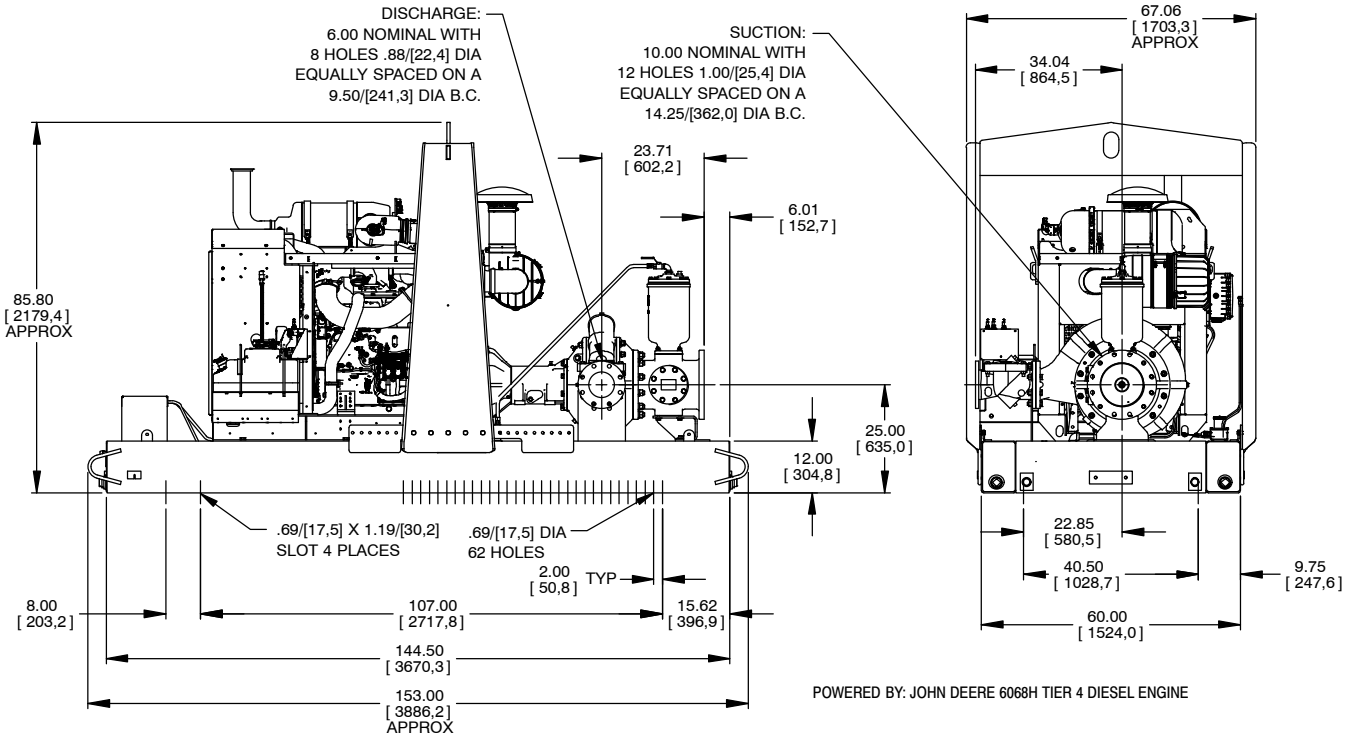
Printed in U.S.A.

Specification Data

APPROXIMATE DIMENSIONS and WEIGHTS

NET WEIGHT: 6800 LBS. (3084 KG.)
SHIPPING WEIGHT: 7280 LBS. (3302 KG.)
EXPORT CRATE SIZE: 581 CU. FT. (16,5 CU. M.)

SECTION 43, PAGE 312



GORMAN-RUPP PUMPS

www.grpumps.com

Specifications Subject to Change Without Notice

Printed in U.S.A.