



# Priming Assisted Centrifugal Pump w/Autostart

## Model PAH6C60-6068H

### Size 8" x 6"



Total Head		Capacity of Pump in U.S. Gallons per Minute (GPM) at Continuous Performance			
P.S.I.	Feet				
121.4	280	960	1000	1000	1000
104.0	240	1140	1600	1960	2240
86.7	200	1200	1640	2040	2320
69.4	160	1210	1650	2090	2360
52.0	120	1210	1660	2120	2400
34.7	80	1210	1670	2140	2440
17.3	40	1210	1690	2170	2500
<b>Suction Lift</b>		<b>25'</b>	<b>20'</b>	<b>15'</b>	<b>10'</b>

#### PUMP SPECIFICATIONS

**Size:** 8" x 6" (203,2 mm x 152,4 mm) Flanged.

**Casing:** Ductile Iron 65-45-12.

Maximum Operating Pressure 207 psi (1427 kPa).\*

**Enclosed Type, Two Vane Impeller:** Ductile Iron 65-45-12.

Handles 3" (76,2 mm) Diameter Spherical Solids.

**Suction Head:** Gray Iron 30

**Suction Spool:** Gray Iron 30.

**Impeller Shaft:** Alloy Steel 4150M.

**Replaceable Wear Ring:** Ductile Iron 65-45-12.

**Bearing Pedestal:** Gray Iron 30.

**Seal Plate:** Gray Iron 30.

**Seal:** Mechanical, SAE 30 Non-Detergent Oil-Lubricated. Silicon Carbide Rotating Face and Stationary Seat. Fluorocarbon Elastomers (DuPont Viton® or Equivalent). Stainless Steel 316 Cage and Stainless Steel 18-8 Spring. Maximum Temperature of Liquid Pumped 160 °F (71 °C).\*

**Shaft Sleeve:** Stainless Steel 303/304.

**Priming Chamber:** Gray Iron 30 Housing w/Stainless Steel Float and Linkage.

**Discharge Check Valve:** Ductile Iron Housing w/Buna-N Flapper.

**Radial Bearing:** Open Single Ball.

**Thrust Bearing:** Open Double Ball.

**Bearing Cavity Lubrication:** Lithium EP2 Grease.

**Gaskets:** Vegetable Fiber, Buna-N, Fluorocarbon (DuPont Viton® or Equivalent).

**O-Rings:** Buna-N.

**Hardware:** Standard Plated Steel.

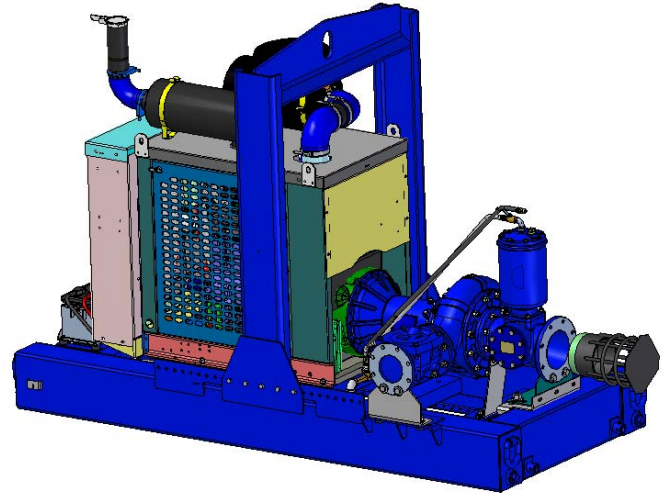
**Seal Cavity Oil Level Sight Gauges.**

\*Consult Factory for Applications Exceeding Maximum Pressure and/or Temperature Indicated.

**Standard Equipment:** Strainer. Gear-Driven Air Compressor. Hoisting Bail. Combination Skid Base w/Fuel Tank. Single Ball Type Float Switch.\*\*

**Optional Equipment:** Battery. Suction Vacuum and Discharge Pressure Gauge Kit. High Speed (55 MPH/89 KM/H) Tandem Axle Pneumatic-Tired Wheel Kit w/wo DOT-Approved Lights and Electric Brakes. Tandem Axle Over-the-Road Trailer (Meets DOT Requirements) Available w/Either Electric or Hydraulic Surge Brakes, Running Lights, Jack Stands and Safety Chains/Cables, [Full Feature Control Panel](#) For Use w/Submersible Transducer Liquid Level Sensor (50 Ft. [15 M] Cable Standard, Alternate Lengths Available).

\*\*50 Ft. (15 m) Standard Length; Dual Switches and Alternate Cable Lengths Available From the Factory.



#### ENGINE SPECIFICATIONS

**Model:** John Deere 6068H "Power Tech."

**EPA Tier:** Tier 3.

**Type:** Six Cylinder, Four Cycle, Turbocharged, Charge Air Cooled, Enclosed, Liquid Cooled Diesel Engine.

**Displacement:** 415 Cu. In. (6,8 liters).

**Lubrication:** Forced Circulation.

**Air Cleaner:** Dry Type.

**Fuel Tank:** 130 U.S. Gals. (492 liters).

**Full Load Operating Time:** 13.4 Hrs.

**Starter:** 12V Electric.

**Standard Features:** Muffler w/Weather Cap..

**Optional:** Electronic Fuel Level Sensor.

**Engine Control Features:** Padlockable Box with Throttle Control, Tachometer, Coolant Temperature, Oil Pressure, Voltage and Overstart Indicators/Shut-downs. Manual/Stop/Auto Keyswitch. Audible Startup Warning Delay. Fuel Level Display/Alarm/Shutdown (For Use With Optional Fuel Level Sensor).

#### JOHN DEERE PUBLISHED PERFORMANCE:

Maximum Gross BHP (Ind/Hvy Duty)  
225 (168 kW) @ 2200 RPM



## GORMAN-RUPP PUMPS

www.grpumps.com

Specifications Subject to Change Without Notice

Printed in U.S.A.

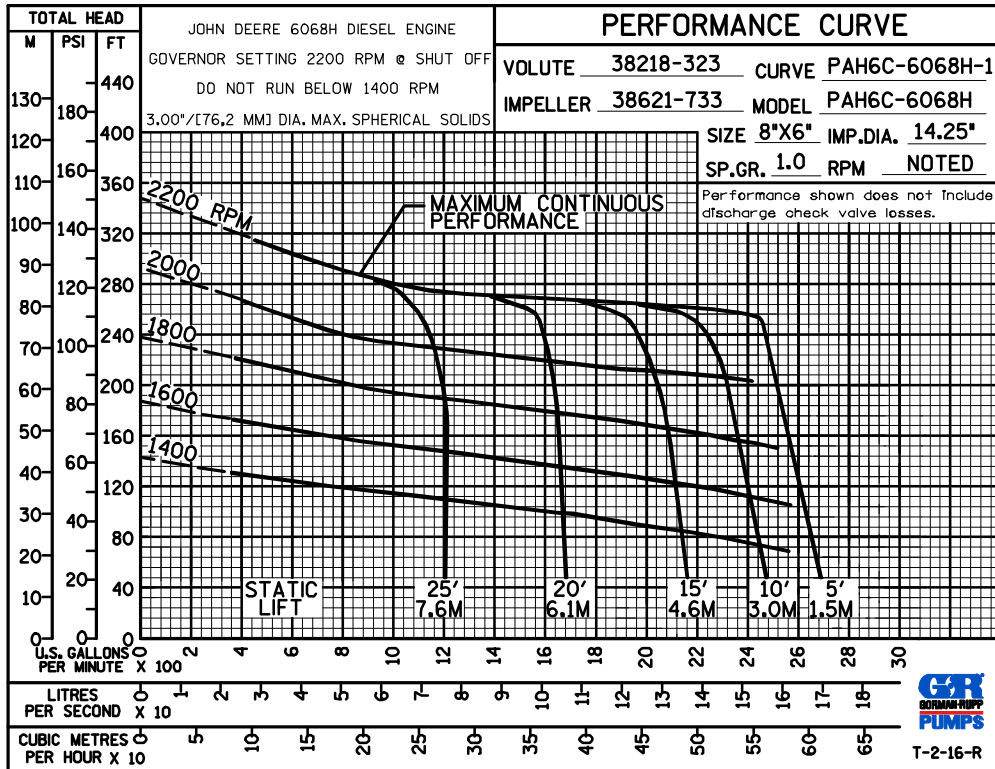
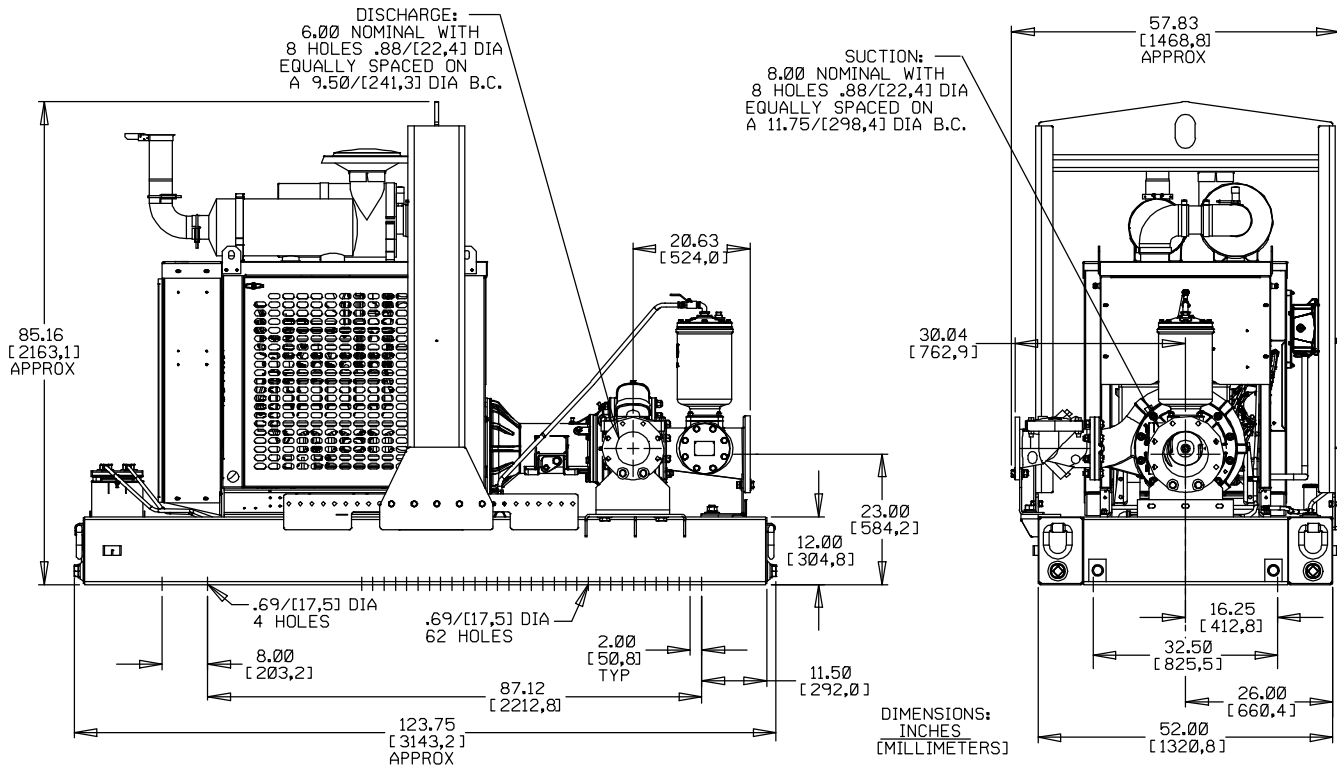
**Specification Data**

APPROXIMATE  
DIMENSIONS and WEIGHTS

**NET WEIGHT:**  
**SHIPPING WEIGHT:**  
**EXPORT CRATE SIZE:**

**5550 LBS. [2517,4 KG.]**  
**5850 LBS. [2653,5 KG.]**  
**385 CU. FT. (10,9 CU. M.)**

SECTION 43, PAGE 295



**GORMAN-RUPP PUMPS**

www.grpumps.com

Specifications Subject to Change Without Notice

Printed in U.S.A.