



Priming Assisted Centrifugal Pump w/Autostart Model PAH4A60-C4.4TA FT4 Size 6" x 4"



VARIOUS PATENTS APPLY

Total Head		Capacity of Pump in U.S. Gallons per Minute (GPM) at Continuous Performance			
P.S.I.	Feet				
127.4	294	400	400	N/A	N/A
121.4	280	580	580	N/A	N/A
104.0	240	1070	1280	320	N/A
86.7	200	1110	1370	1180	N/A
69.4	160	1120	1400	1740	N/A
52.0	120	1125	1410	1780	N/A
34.7	80	1130	1425	1790	N/A
17.3	40	1130	1430	1800	N/A
Suction Lift		25'	20'	±15'	±10'

PHOTO NOT AVAILABLE AT TIME OF PUBLISHING

‡Suction Lift Based On 1800 RPM Engine Speed.

PUMP SPECIFICATIONS

Size: 6" x 4" (152 mm x 102 mm) Flanged.

Casing: Ductile Iron 65-45-12.

Maximum Operating Pressure 201 psi (1386 kPa).*

Enclosed Type, Five Vane Impeller: Ductile Iron 65-45-12.

Handles 3" (76,2 mm) Diameter Spherical Solids.

Suction Head: Gray Iron 30.

Suction Spool: Gray Iron 30.

Impeller Shaft: Alloy Steel 4150M.

Externally Adjustable, Replaceable Wear Ring: Ductile Iron 65-45-12.

Bearing Pedestal: Gray Iron 30.

Seal Plate: Gray Iron 30.

Seal: Mechanical, SAE 30 Non-Detergent Oil-Lubricated. Silicon Carbide Rotating Face and Stationary Seat. Fluorocarbon Elastomers (DuPont Viton® or Equivalent). Stainless Steel 316 Cage and Stainless Steel 18-8 Spring. Maximum Temperature of Liquid Pumped 160° F (71° C).*

Shaft Sleeve: Stainless Steel 303/304.

Priming Chamber: Gray Iron 30 Housing w/Stainless Steel Float and Linkage.

Discharge Check Valve: Ductile Iron Housing with Welded Nickel Seat and Buna-N Flapper.

Radial Bearing: Open Single Row Roller.

Thrust Bearing: Open Double Row Ball.

Bearing Cavity Lubrication: Lithium EP2 Grease.

Gaskets: Vegetable Fiber. Fluorocarbon Elastomers (DuPont Viton® or Equivalent). Buna-N.

O-Rings: Buna-N.

Hardware: Standard Plated Steel.

Seal Cavity Oil Level Sight Gauges.

*Consult Factory for Applications Exceeding Maximum Pressure and/or Temperature Indicated.

Standard Equipment: Gear-Driven Air Compressor. Hoisting Bail. [Full Feature Control Panel](#) Combination Skid Base w/Fuel Tank. [Single Ball Type Float Switch](#).**

Optional Equipment: Battery. NPT Threaded Flange Kit. Heated Priming Chamber Kit. Suction Vacuum and Discharge Pressure Gauge Kit. High Speed (55 MPH/89 KM/H) Tandem Axle Pneumatic-Tired Wheel Kit w/wo DOT Approved Lights and Electric Brakes. [Tandem Axle Over-the-Road Trailer](#). Liquid Level Transducer.

**50 Ft. (15 m) Standard Length; Dual Switches and Alternate Cable Lengths Available From the Factory.

WARNING!

Do not use in explosive atmosphere or for pumping volatile flammable liquids.

ENGINE SPECIFICATIONS

Model: Caterpillar C4.4TA.

EPA Tier: Final Tier 4.

Type: Four Cylinder, Turbocharged Diesel Engine.

Displacement: 269 Cu. In. (4,41 Liters).

Lubrication: Forced Circulation.

Air Cleaner: Dry Type.

Fuel Tank: 110 U.S. Gals. (417 Liters).

Full Load Operating Time: 15.7 Hrs.

Starter: 12V Electric.

Standard Features: Muffler w/Weather Cap, DOC/SCR Exhaust After Treatment System.

Engine Control Features: Padlockable Box with Throttle Control, Tachometer, Coolant Temperature, Oil Pressure, Voltage and Overstart Indicators/Shut-downs. Manual/Stop/Auto Keyswitch. Audible Start-up Warning Delay. Electronic Fuel Level Sensor. Fuel Level Display/Alarm/Shutdown.

CATERPILLAR PUBLISHED PERFORMANCE:

Maximum Gross BHP (Intermittent)
148 (110 kW) @ 2200 RPM



GORMAN-RUPP PUMPS

www.grpumps.com

Specifications Subject to Change Without Notice

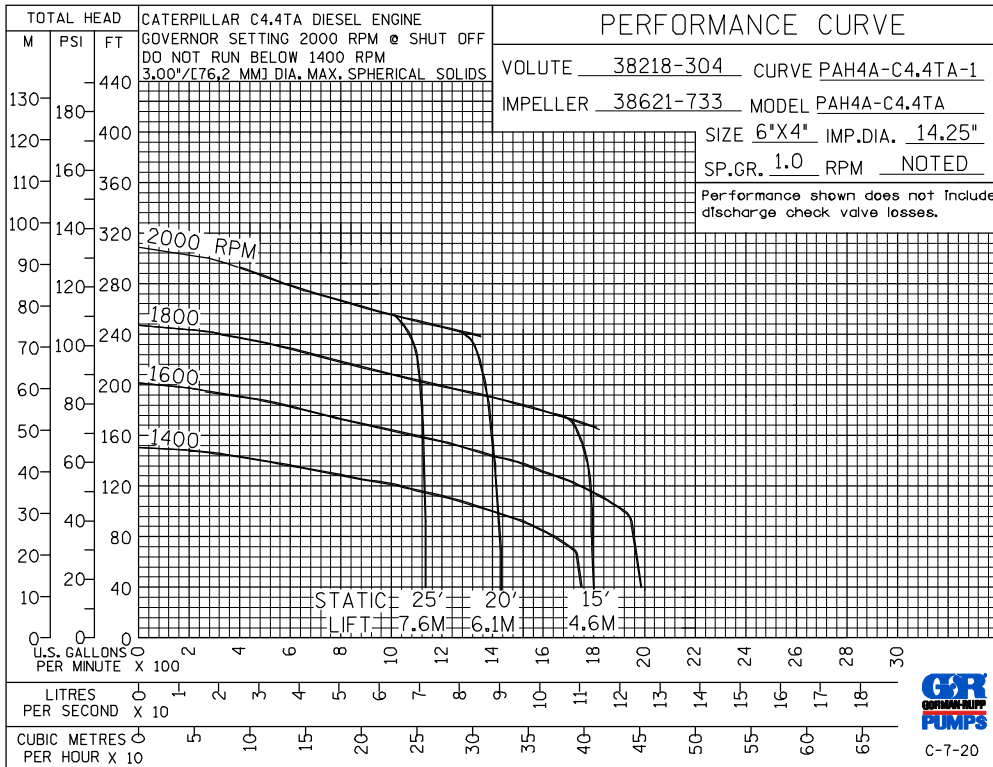
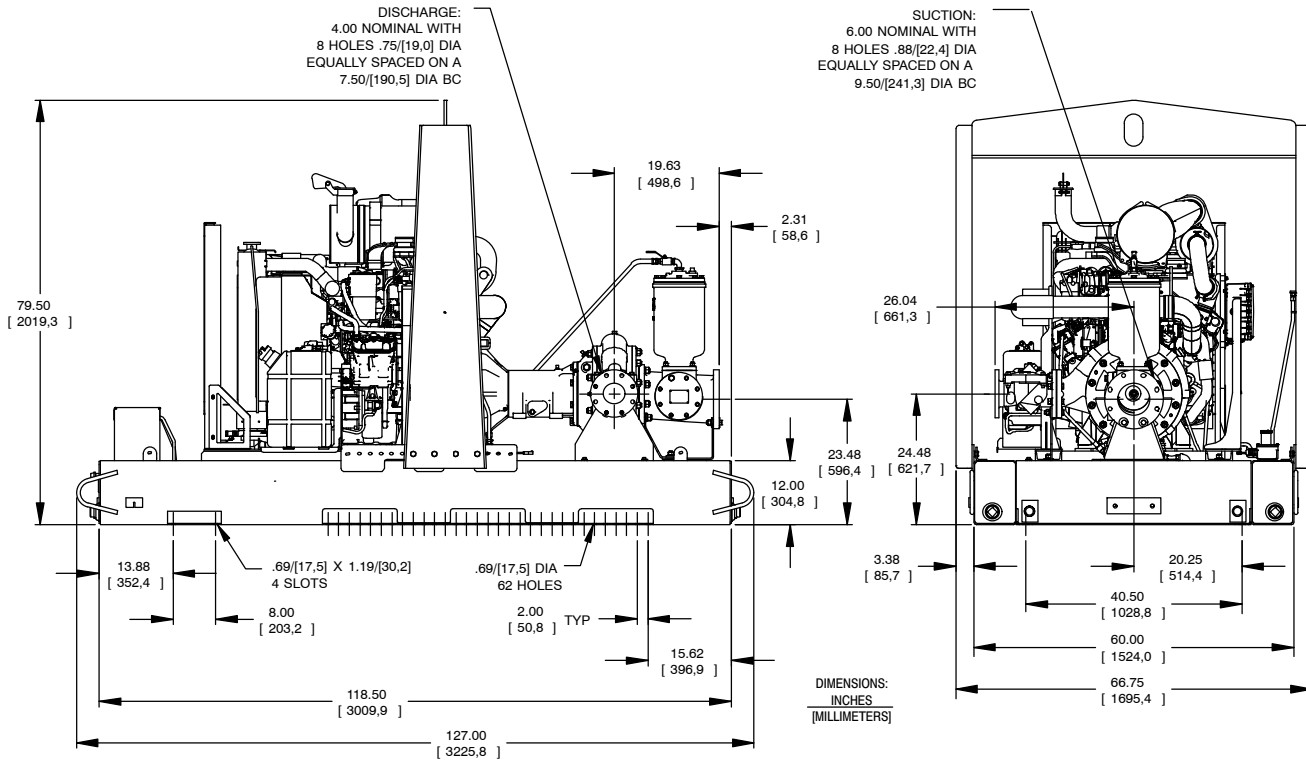
Printed in U.S.A.

Specification Data

SECTION 43, PAGE 234

APPROXIMATE
DIMENSIONS and WEIGHTS

NET WEIGHT: 4680 LBS. (2123 KG.)
SHIPPING WEIGHT: 4800 LBS. (2177 KG.)
EXPORT CRATE SIZE: 449 CU. FT. (12,7 CU. M.)



GORMAN-RUPP PUMPS

www.grpumps.com

Specifications Subject to Change Without Notice

Printed in U.S.A.