



**Diesel Engine Driven  
Priming Assisted Centrifugal Pump  
w/Autostart  
Model PAH4A60–4045H FT4  
Size 6” x 4”**



Total Head		Capacity of Pump in U.S. Gallons per Minute (GPM) at Continuous Performance				
P.S.I.	Feet					
127.0	293	400	400	N/A	N/A	N/A
121.4	280	560	560	N/A	N/A	N/A
104.0	240	1060	1280	320	320	320
86.7	200	1110	1370	1160	1200	1200
69.4	160	1120	1400	1740	1880	1880
52.0	120	1125	1415	1780	2040	2180
34.7	80	1130	1425	1790	2060	2200
17.3	40	1130	1430	1800	2060	2230
<b>Suction Lift</b>		<b>25'</b>	<b>20'</b>	<b>±15'</b>	<b>±10'</b>	<b>±5'</b>

±Suction Lift Based On 1800 RPM Engine Speed.

**PUMP SPECIFICATIONS**

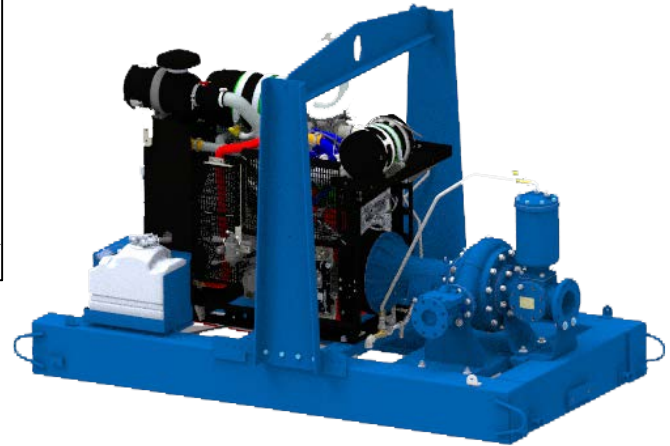
- Size:** 6” x 4” (152 mm x 102 mm) Flanged.
- Casing:** Ductile Iron 65-45-12.
- Maximum Operating Pressure:** 201 psi (1386 kPa).\*
- Enclosed Type, Two Vane Impeller:** Ductile Iron 65-45-12.  
Handles 3” (76.2 mm) Diameter Spherical Solids.
- Suction Head:** Gray Iron 30.
- Suction Spool:** Gray Iron 30.
- Impeller Shaft:** Alloy Steel 4150M.
- Replaceable Wear Ring:** Ductile Iron 65-45-12.
- Pedestal:** Gray Iron 30.
- Seal Plate:** Gray Iron 30.
- Seal:** Mechanical, SAE 30 Non-Detergent Oil-Lubricated. Silicon Carbide Rotating Face and Stationary Seat. Fluorocarbon Elastomers (DuPont Viton® or Equivalent). Stainless Steel 316 Cage and Stainless Steel 18-8 Spring. Maximum Temperature of Liquid Pumped 160° F (71° C).\*
- Shaft Sleeve:** Stainless Steel 303/304.
- Priming Chamber:** Gray Iron 30 Housing w/Stainless Steel Float and Linkage.
- Discharge Check Valve:** Ductile Iron Housing with Welded Nickel Seat and Buna-N Flapper.
- Radial Bearing:** Open Single Row Roller.
- Thrust Bearing:** Open Double Row Ball.
- Bearing Cavity Lubrication:** Lithium EP2 Grease.
- Gaskets:** Vegetable Fiber, Buna-N.
- O-Rings:** Buna-N.
- Hardware:** Standard Plated Steel.
- Seal Cavity Oil Level Sight Gauges.**

\*Consult Factory for Applications Exceeding Maximum Pressure and/or Temperature Indicated.

**Standard Equipment:** Gear-Driven Air Compressor. Hoisting Bail. Combination Skid Base w/Fuel Tank. [Single Ball Type Float Switch](#). [Full Feature Control Panel](#)\*\*

**Optional Equipment:** Battery. Skid Base Kit. NPT Threaded Flange Kit. Heated Priming Chamber Kit. Suction Vacuum and Discharge Pressure Gauge Kit. Wheel Kit w/ DOT-Approved Lights and Electric Brakes. [Tandem Axle Over-the-Road Trailer](#) (Meets DOT Requirements) Available w/ Either Electric or Hydraulic Surge Brakes, Running Lights, Jack Stands and Safety Chains/Cables. Liquid Level Transducer.

\*\*50 Ft. (15 m) Standard Length; Dual Switches and Alternate Cable Lengths Available From the Factory.



**WARNING!**

Do not use in explosive atmosphere or for pumping volatile flammable liquids.

**ENGINE SPECIFICATIONS**

- Model:** John Deere 4045HFC06
- EPA Tier:** Final Tier 4.
- Type:** Four Cylinder, Turbocharged, Diesel Engine with Air Compressor.
- Displacement:** 276 Cu. In. (4,5 liters).
- Lubrication:** Forced Circulation.
- Air Cleaner:** Dry Type.
- Fuel Tank:** 120 U.S. Gals. (454 liters).
- Full Load Operating Time:** 15.0 Hrs.
- Starter:** 12V Electric.
- Standard Features:** Weather Cap. DOC/SCR Exhaust After Treatment System.
- Engine Control Features:** Padlockable Box with Throttle Control, Tachometer, Coolant Temperature, Oil Pressure, Voltage and Overstart Indicators/Shutdowns. Manual/Stop/Auto Keyswitch. Audible Startup Warning Delay. Fuel Level Display/Alarm/Shutdown. Electronic Fuel Level Sensor.

**JOHN DEERE PUBLISHED PERFORMANCE:**  
Maximum Gross BHP (Continuous)  
156 (116 kW) @ 2200 RPM



**GORMAN-RUPP PUMPS**

www.grpumps.com

Specifications Subject to Change Without Notice

Printed in U.S.A.

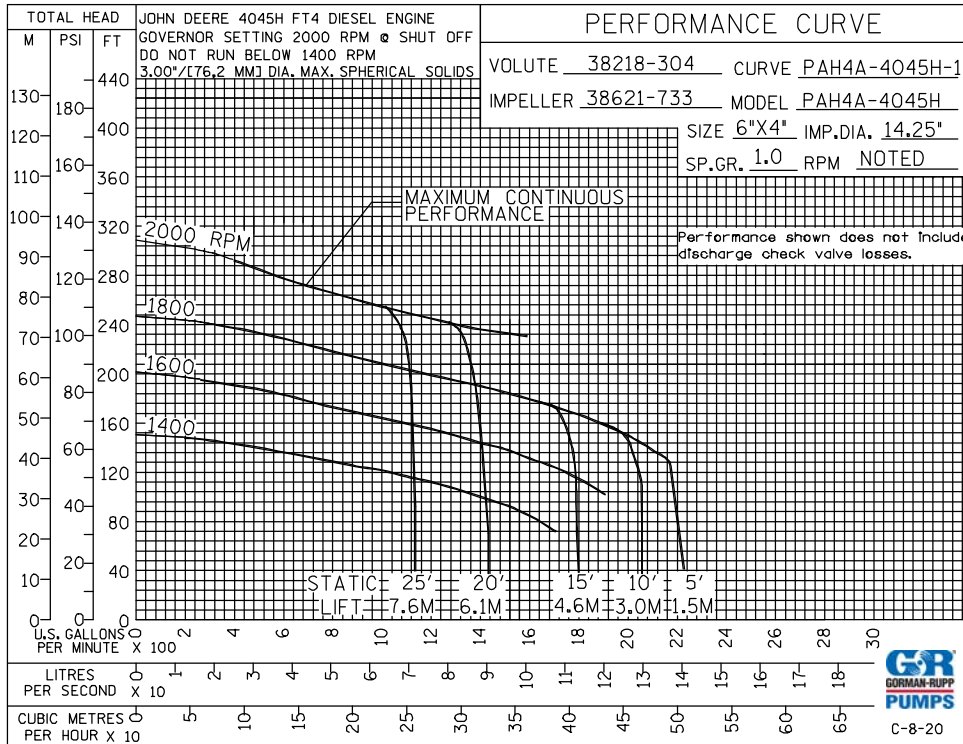
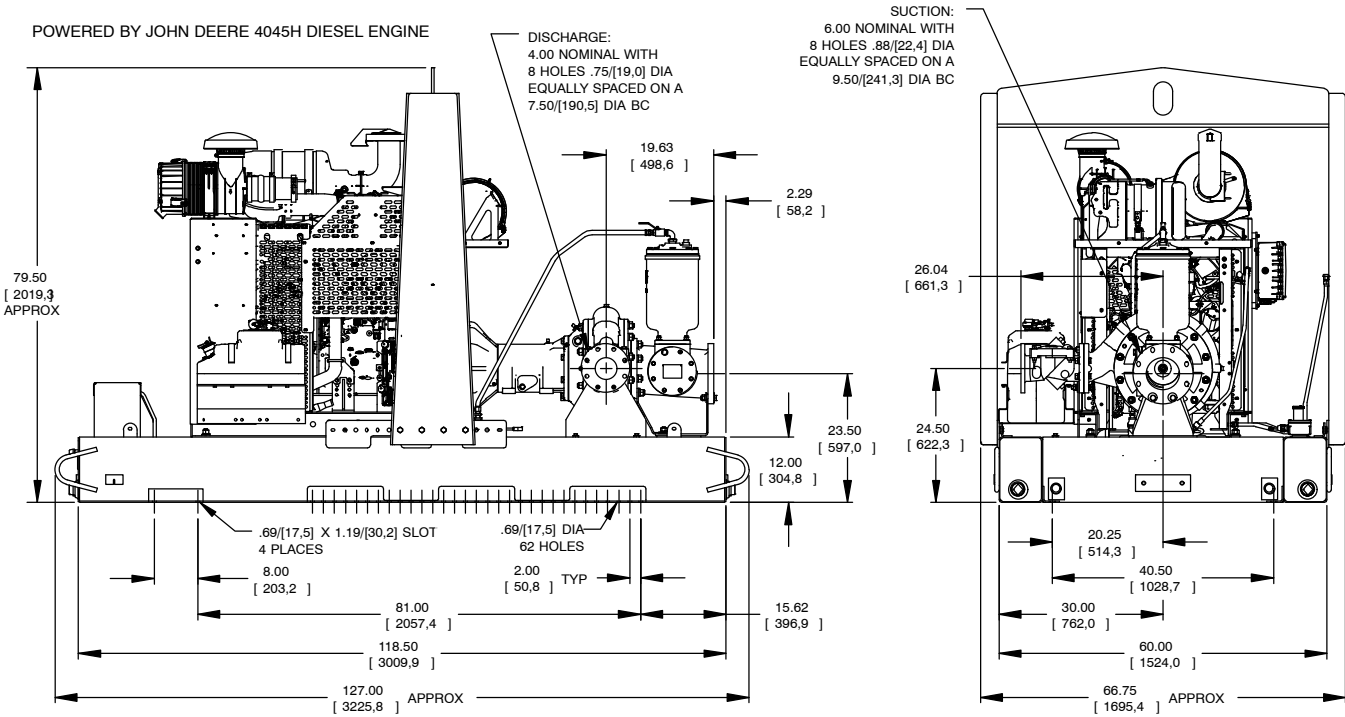
**Specification Data**

SECTION 43, PAGE 232

APPROXIMATE DIMENSIONS and WEIGHTS

**SKID BASE**

**NET WEIGHT:** 4300 LBS. (1950,4 KG.)  
**SHIPPING WEIGHT:** 4425 LBS. (2007,1 KG.)  
**EXPORT CRATE SIZE:** 449 CU. FT. (12,7 CU. M.)



**GORMAN-RUPP PUMPS**

www.grpumps.com

Specifications Subject to Change Without Notice

Printed in U.S.A.