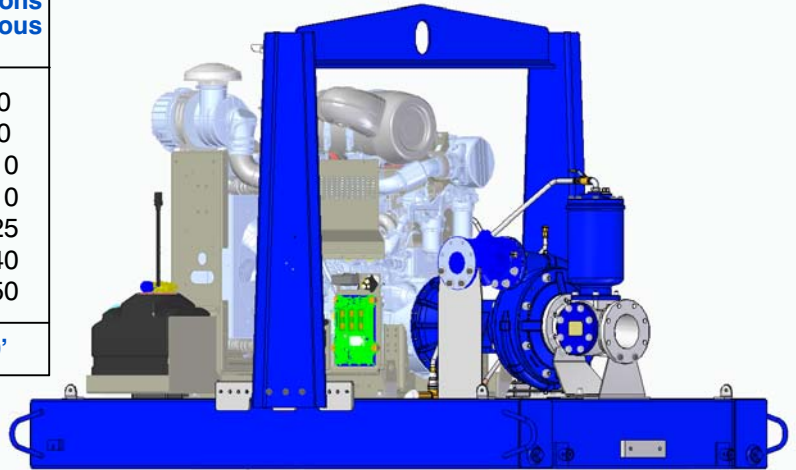




# Priming Assisted Centrifugal Pump w/Autostart Model PAH4D60-4045H FT4 Size 6" x 4"



Total Head		Capacity of Pump in U.S. Gallons per Minute (GPM) at Continuous Performance			
P.S.I.	Feet				
122.2	282	460	460	460	460
104.0	240	520	760	895	930
86.7	200	520	762	998	1110
69.3	160	522	765	1000	1210
52.0	120	525	770	1000	1225
34.7	80	527	770	1002	1240
17.3	40	530	770	1005	1250
<b>Suction Lift</b>		<b>25'</b>	<b>20'</b>	<b>15'</b>	<b>10'</b>



**PUMP SPECIFICATIONS**

**Size:** 6" x 4" (152 mm x 102 mm) Flanged.  
**Casing:** Ductile Iron 65-45-12.  
 Maximum Operating Pressure 184 psi (1269 kPa).\*  
**Enclosed Type, Five Vane Impeller:** Ductile Iron 65-45-12.  
 Handles 1/2" (12,7 mm) Diameter Spherical Solids.  
**Suction Head:** Ductile Iron 65-45-12.  
**Suction Spool:** Gray Iron 30.  
**Impeller Shaft:** Alloy Steel 4150M.  
**Replaceable Wear Ring:** Ductile Iron 65-45-12.  
**Bearing Pedestal:** Gray Iron 30.  
**Seal Plate:** Gray Iron 30.  
**Seal:** Mechanical, SAE 30 Non-Detergent Oil-Lubricated. Silicon Carbide Rotating Face and Stationary Seat. Fluorocarbon Elastomers (DuPont Viton® or Equivalent). Stainless Steel 316 Cage and Stainless Steel 18-8 Spring. Maximum Temperature of Liquid Pumped 160°F (71°C).\*  
**Shaft Sleeve:** Stainless Steel 303/304.  
**Priming Chamber:** Gray Iron 30 Housing w/Stainless Steel Float and Linkage.  
**Discharge Check Valve:** Ductile Iron Housing w/Buna-N Flapper.  
**Radial Bearing:** Open Single Ball.  
**Thrust Bearing:** Open Double Ball.  
**Bearing Cavity Lubrication:** Lithium EP2 Grease.  
**Gaskets:** Vegetable Fiber.  
**O-Rings:** Buna-N.  
**Hardware:** Standard Plated Steel.  
**Seal Cavity Oil Level Sight Gauges.**  
*\*Consult Factory for Applications Exceeding Maximum Pressure and/or Temperature Indicated.*  
**Standard Equipment:** Gear-Driven Air Compressor. Hoisting Bail. Combination Skid Base w/Fuel Tank. [Single Ball Type Float Switch](#). [Full Feature Control Panel](#)\*\*  
**Optional Equipment:** Battery. Skid Drag Base Kit. NPT Threaded Flange Kit. Heated Priming Chamber Kit. Suction Vacuum and Discharge Pressure Gauge Kit. Wheel Kit w/ DOT-Approved Lights and Electric Brakes. [Tandem Axle Over-the-Road Trailer](#) (Meets DOT Requirements) Available w/ Either Electric or Hydraulic Surge Brakes, Running Lights, Jack Stands and Safety Chains/Cables Liquid Level Transducer.  
*\*\*50 Ft. (15 m) Standard Length; Dual Switches and Alternate Cable Lengths Available From the Factory.*

**WARNING!**

Do not use in explosive atmosphere or for pumping volatile flammable liquids.

**ENGINE SPECIFICATIONS**

**Model:** John Deere 4045HFC04  
**EPA Tier:** Tier 4.  
**Type:** Four Cylinder, Turbocharged, Diesel Engine with Air Compressor.  
**Displacement:** 276 Cu. In. (4,5 liters).  
**Lubrication:** Forced Circulation.  
**Air Cleaner:** Dry Type.  
**Fuel Tank:** 110 U.S. Gals. (417 liters).  
**Full Load Operating Time:** 16.1 Hrs.  
**Starter:** 12V Electric.  
**Standard Features:** Weather Cap. DOC/SCR Exhaust After Treatment System.  
**Engine Control Features:** Padlockable Box with Throttle Control, Tachometer, Coolant Temperature, Oil Pressure, Voltage and Overstart Indicators/Shutdowns. Manual/Stop/Auto Key-switch. Audible Startup Warning Delay. Fuel Level Display/Alarm/Shutdown Electronic Fuel Level Sensor.

**JOHN DEERE PUBLISHED PERFORMANCE:**  
 Maximum Gross BHP (Continuous)  
 125 (93 kW) @ 2200 RPM



GORMAN-RUPP PUMPS

www.grpumps.com

Specifications Subject to Change Without Notice

Printed in U.S.A.

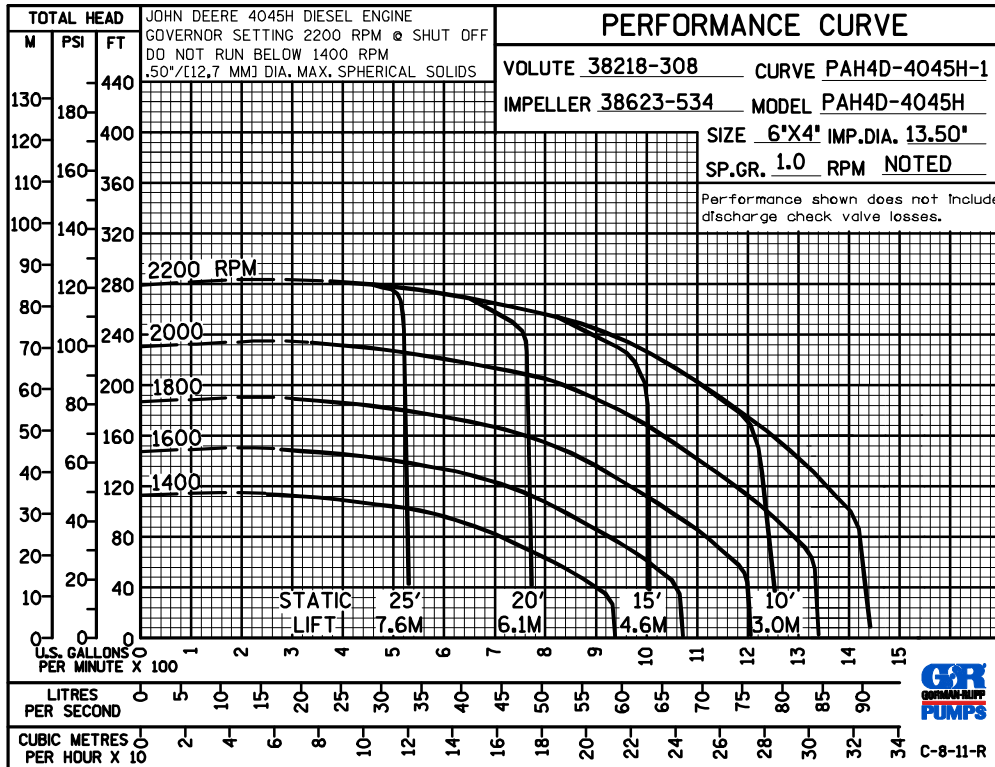
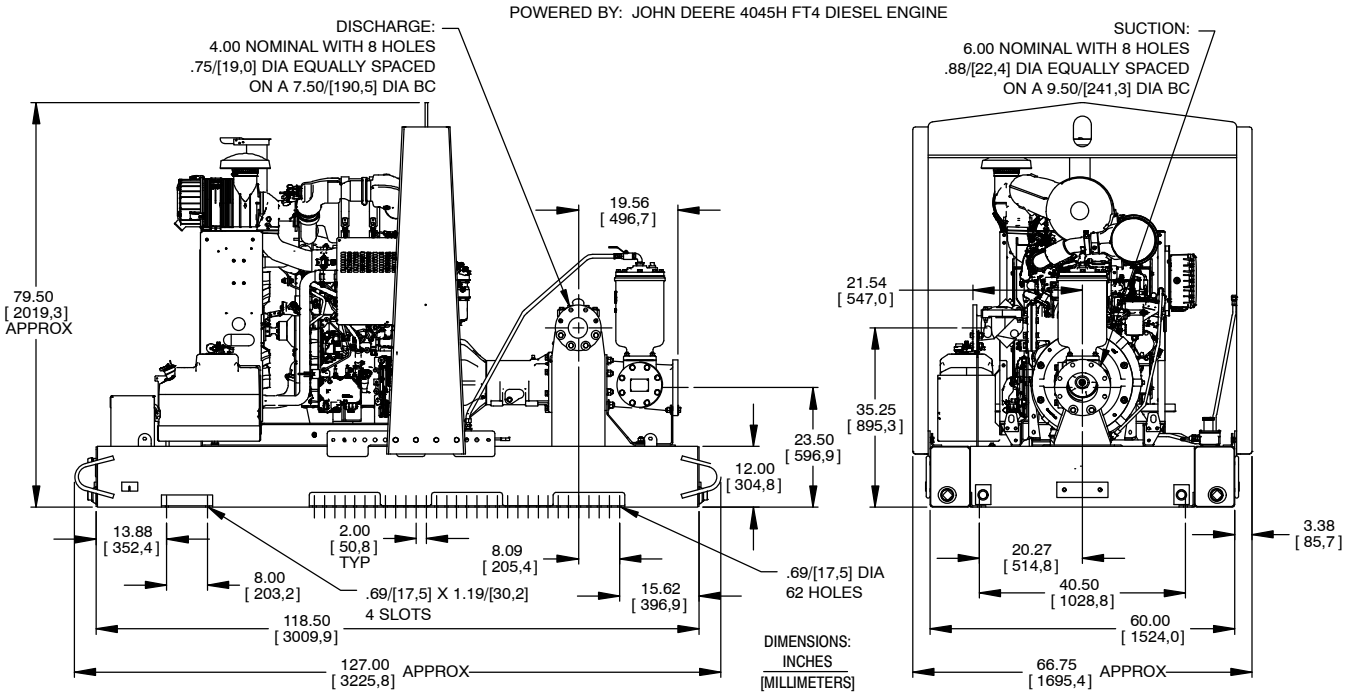
**Specification Data**

APPROXIMATE DIMENSIONS and WEIGHTS

**NET WEIGHT:**  
**SHIPPING WEIGHT:**  
**EXPORT CRATE SIZE:**

**SKID BASE**  
**4280 LBS. (1941,4 KG.)**  
**4405 LBS. (1998,1 KG.)**  
**453 CU. FT. (12,8 CU. M.)**

SECTION 43, PAGE 211



**GORMAN-RUPP PUMPS**

www.grpumps.com

Specifications Subject to Change Without Notice

Printed in U.S.A.