



# Priming Assisted Centrifugal Pump w/Autostart

## Model PAH3A60—4045H FT4 Size 6" x 3"



Total Head		Capacity of Pump in U.S. Gallons per Minute (GPM) at Continuous Performance			
P.S.I.	Feet				
173.4	400	480	480	480	480
156.1	360	600	810	840	845
138.7	320	608	882	1000	1040
121.4	280	610	900	1075	1160
104.0	240	610	900	1100	1200
86.7	200	615	900	1100	1200
69.4	160	615	900	1100	1200
52.0	120	615	900	1100	1200
34.7	80	615	900	1100	1200
17.3	40	615	900	1100	1200
<b>Suction Lift</b>		<b>25'</b>	<b>20'</b>	<b>15'</b>	<b>10'</b>

PHOTO NOT AVAILABLE AT TIME OF PUBLISHING

### PUMP SPECIFICATIONS

**Size:** 6" x 3" (152 mm x 76 mm) Flanged.

**Casing:** Ductile Iron 65-45-12.

Maximum Casing Pressure 260 psi (1793 kPa).\*

Maximum Operating Pressure 250 psi (1723 kPa) at Temperatures up to 100° F (37° C) Based on System Component Limitations.\*

**Enclosed Type, Five Vane Impeller:** Ductile Iron 65-45-12.

Handles 1/2" (12,7 mm) Diameter Spherical Solids.

**Suction Head:** Ductile Iron 65-45-12.

**Suction Spool:** Gray Iron 30.

**Impeller Shaft:** Alloy Steel 4150M.

**Replaceable Wear Ring:** Ductile Iron 65-45-12.

**Bearing Pedestal:** Gray Iron 30.

**Seal Plate:** Gray Iron 30.

**Seal:** Mechanical, SAE 30 Non-Detergent Oil-Lubricated. Silicon Carbide Rotating Face and Stationary Seat. Fluorocarbon Elastomers (DuPont Viton® or Equivalent). Stainless Steel 316 Cage and Stainless Steel 18-8 Spring. Maximum Temperature of Liquid Pumped 160° F (71° C).\*

**Shaft Sleeve:** Stainless Steel 303/304.

**Priming Chamber:** Gray Iron 30 Housing w/Stainless Steel Float and Linkage.

**Discharge Check Valve:** Ductile Iron Housing w/Buna-N Flapper.

**Radial Bearing:** Open Single Ball.

**Thrust Bearing:** Open Double Ball.

**Bearing Cavity Lubrication:** Lithium EP2 Grease.

**Gaskets:** Vegetable Fiber.

**O-Rings:** Buna-N.

**Hardware:** Standard Plated Steel.

**Seal Cavity Oil Level Sight Gauges.**

\*Consult Factory for Applications Exceeding Maximum Pressure and/or Temperature Indicated.

**Standard Equipment:** Strainer. Gear-Driven Air Compressor. Hoisting Bail. Combination Skid Base w/Fuel Tank. [Single Ball Type Float Switch](#). [Full Feature Control Panel](#)\*\*

**Optional Equipment:** Battery. Skid Drag Base Kit. Heated Priming Chamber Kit. NPT Threaded Flange Kit. Suction Vacuum and Discharge Pressure Gauge Kit. Wheel Kit w/ DOT Approved Lights and Electric Brakes. [Tandem Axle Over-the-Road Trailer](#). (Meets DOT Requirements) Available w/ Either Electric or Hydraulic Surge Brakes, Running Lights, Jack Stands and Safety Chains/Cables. Liquid Level Transducer.

\*\*50 Ft. (15 m) Standard Length; Dual Switches and Alternate Cable Lengths Available From the Factory.



### ENGINE SPECIFICATIONS

**Model:** John Deere 4045HFC06

**EPA Tier:** Tier 4.

**Type:** Four Cylinder, Turbocharged, Diesel Engine with Air Compressor.

**Displacement:** 276 Cu. In. (4,5 liters).

**Governor:** Electronic.

**Lubrication:** Forced Circulation.

**Air Cleaner:** Dry Type.

**Fuel Tank:** 120 U.S. Gals. (454 liters).

**Full Load Operating Time:** 14.4 Hrs.

**Starter:** 12V Electric.

**Standard Features:** Weather Cap. DOC/SCR Exhaust After Treatment System.

**Engine Control Features:** Padlockable Box with Throttle Control, Tachometer, Coolant Temperature, Oil Pressure, Voltage and Overstart Indicators/Shutdowns. Manual/Stop/Auto Keyswitch. Audible Startup Warning Delay. Fuel Level Display/Alarm/Shutdown. Electronic Fuel Level Sensor.

### JOHN DEERE PUBLISHED PERFORMANCE:

Maximum Gross BHP (Ind/Hvy Duty)  
156 (116 kW) @ 2200 RPM



## GORMAN-RUPP PUMPS

www.grpumps.com

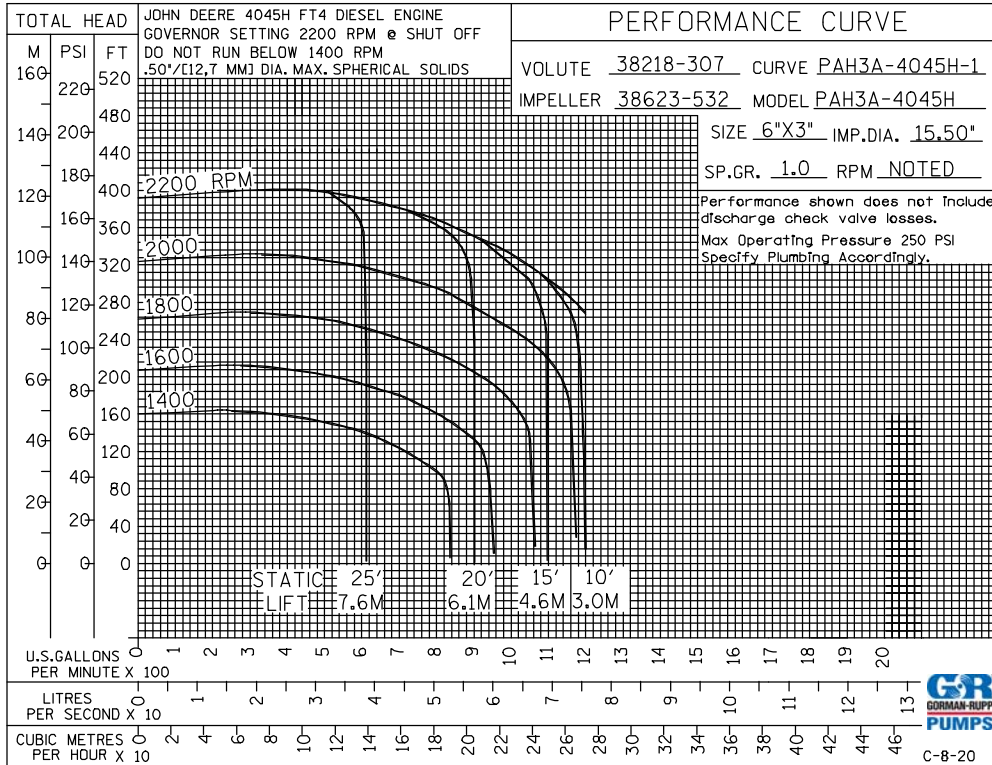
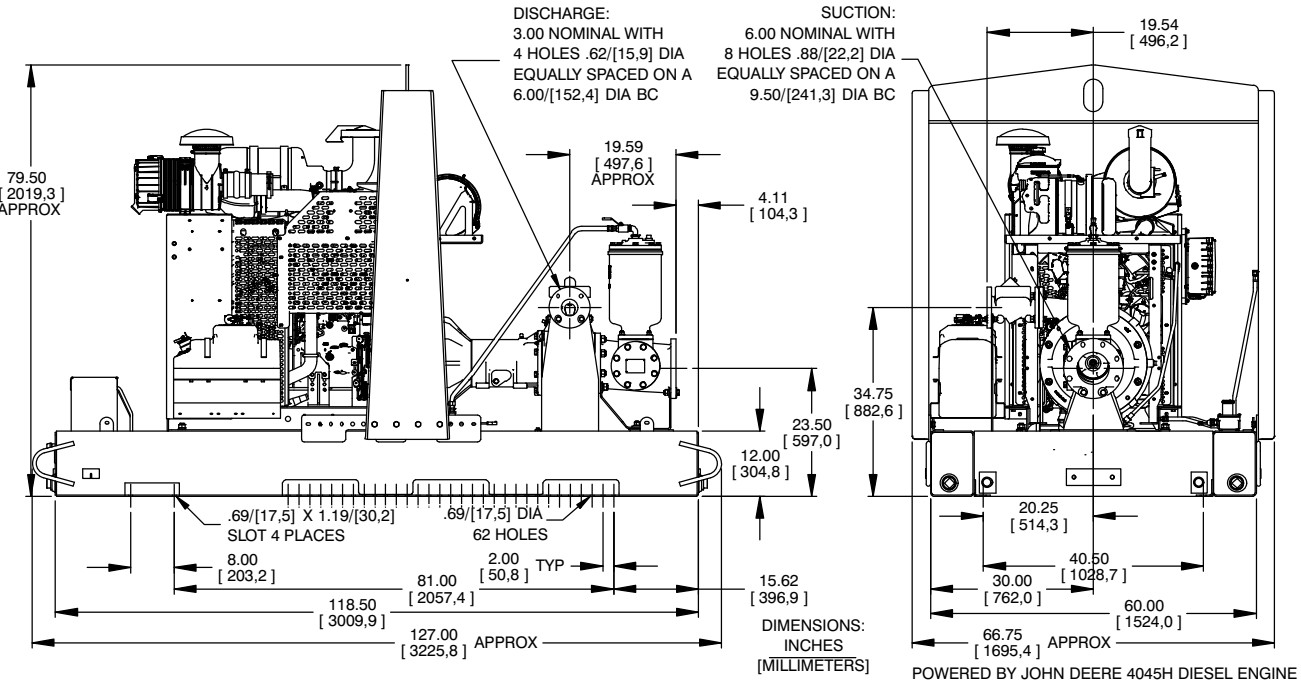
Specifications Subject to Change Without Notice

Printed in U.S.A.

**Specification Data**

APPROXIMATE  
DIMENSIONS and WEIGHTS

**SKID BASE**  
**NET WEIGHT:** 4510 LBS. (2045,7 KG.)  
**SHIPPING WEIGHT:** 4710 LBS. (2136,4 KG.)  
**EXPORT CRATE SIZE:** 453 CU. FT. (12,8 CU. M.)



**GORMAN-RUPP PUMPS**

www.grpumps.com

Specifications Subject to Change Without Notice

Printed in U.S.A.