

A C D E U



VARIOUS PATENTS APPLY

Diesel Engine Driven Priming Assisted Centrifugal Pump w/Autostart

Model PA12A60-B-6068T

Size 12" x 12"



Total Head		Capacity of Pump in U.S. Gallons per Minute (GPM) at Continuous Performance				
P.S.I.	Feet					
45.1	104	1100	1100	1100	1100	1100
43.4	100	2000	2000	2000	2000	2000
39.0	90	2720	3550	3550	3550	3550
34.7	80	3010	4090	4525	4525	4525
30.4	70	3100	4250	5050	5200	5200
26.0	60	3150	4300	5100	5650	5700
22.7	50	3200	4350	5150	5800	6000
17.3	40	3390	4400	5200	5870	6100
13.0	30	3350	4450	5250	5900	6150
8.7	20	3400	4500	5300	5920	6320
Suction Lift		25'	20'	15'	10'	5'



PUMP SPECIFICATIONS

Size: 12" x 12" (305 mm x 305 mm) Flanged.
Casing: Gray Iron No. 30. Maximum Operating Pressure 71 psi (489 kPa).*
Enclosed Type, Three Vane Impeller: Ductile Iron No. 60-40-18.
 Handles 3" (76,2 mm) Diameter Spherical Solids.
Impeller Shaft: Stainless Steel No. 17-4 PH.
Replaceable Wear Rings: Impeller - Ductile Iron No. 80-60-03.
 Suction Head - Copper Alloy C93200.
Seal Plate: Gray Iron No. 30.
Bearing Housing: Gray Iron No. 30.
Seal: Mechanical, Oil-Lubricated, Double Floating, Self-Aligning. Silicon Carbide Rotating and Stationary Faces. Stainless Steel No. 316 Stationary Seat. Buna-N and Fluorocarbon Elastomers (DuPont Viton® or Equivalent). Stainless Steel No. 18-8 Cage and Spring. Maximum Temperature of Liquid Pumped 160°F (71°C).*
Shaft Sleeve: Stainless Steel No. 304.
Priming Chamber: Gray Iron No. 30 Housing w/Stainless Steel Float and Linkage.
Discharge Check Valve: 125# Ductile Iron Housing w/Buna-N Flapper.
Radial Bearing: Single Row Roller.
Thrust Bearings: (2) Open Single Row Ball.
Bearing and Seal Cavity Lubrication: SAE No. 30 Non-Detergent Oil.
Flanges: Gray Iron No. 30.
Gaskets: Vegetable Fiber, Buna-N, Resistant Synthetic Rubber and Cork.
O-Rings: Buna-N and Neoprene.
Hardware: Standard Plated Steel.
Bearing and Seal Cavity Oil Level Sight Gauges.
**Consult Factory for Applications Exceeding Maximum Pressure and/or Temperature Indicated.*
Standard Equipment: Belt-Driven Air Compressor. Hoisting Bail. Skid Base. Strainer. Single Ball Type Float Switch. **
Optional Equipment: Battery. Heated Priming Chamber Kit. Automatic Air Release Valve. Suction Vacuum and Discharge Pressure Gauge Kit. EPS w/Submersible Transducer Liquid Level Sensor.**
***50 Ft. (15 m) Standard Length; Dual Switches and Alternate Cable Lengths Available From the Factory.*

WARNING!

Do not use in explosive atmosphere or for pumping volatile flammable liquids.

ENGINE SPECIFICATIONS

Model: John Deere 6068T "Power Tech".
Type: Six Cylinder, Four Cycle, Turbo-Charged, Liquid Cooled Diesel Engine.
Displacement: 414 Cu. In. (6,8 liter).
Governor: Mechanical.
Lubrication: Forced Circulation.
Air Cleaner: Dry Type.
Oil Reservoir: 20 U.S. Qts. (19 liter) Dry; 19 U.S. Qts. (18 liter) Refill.
Fuel Tank: 171 U.S. Gals. (647 liter).
Full Load Operating Time: 23.2 Hrs.
Starter: 12V Electric.
Standard Features: Low Oil Pressure and High Coolant Temperature Safety Shut Down Switches. Autostart Instrument Panel Includes: Tachometer, Voltmeter, Hourmeter, Coolant Temperature Gauge, Oil Pressure Gauge, Manual/Stop/Auto Key Switch, 10 Amp Pushbutton Circuit Breaker, Audible Startup Warning Delay. Muffler w/Guard and Weather Cap. Throttle Control.

JOHN DEERE PUBLISHED PERFORMANCE:
 Maximum Continuous BHP 153 (114 kW) @ 2500 RPM



THE GORMAN-RUPP COMPANY • MANSFIELD, OHIO

GORMAN-RUPP OF CANADA LIMITED • ST. THOMAS, ONTARIO, CANADA

www.grpumps.com

Specifications Subject to Change Without Notice

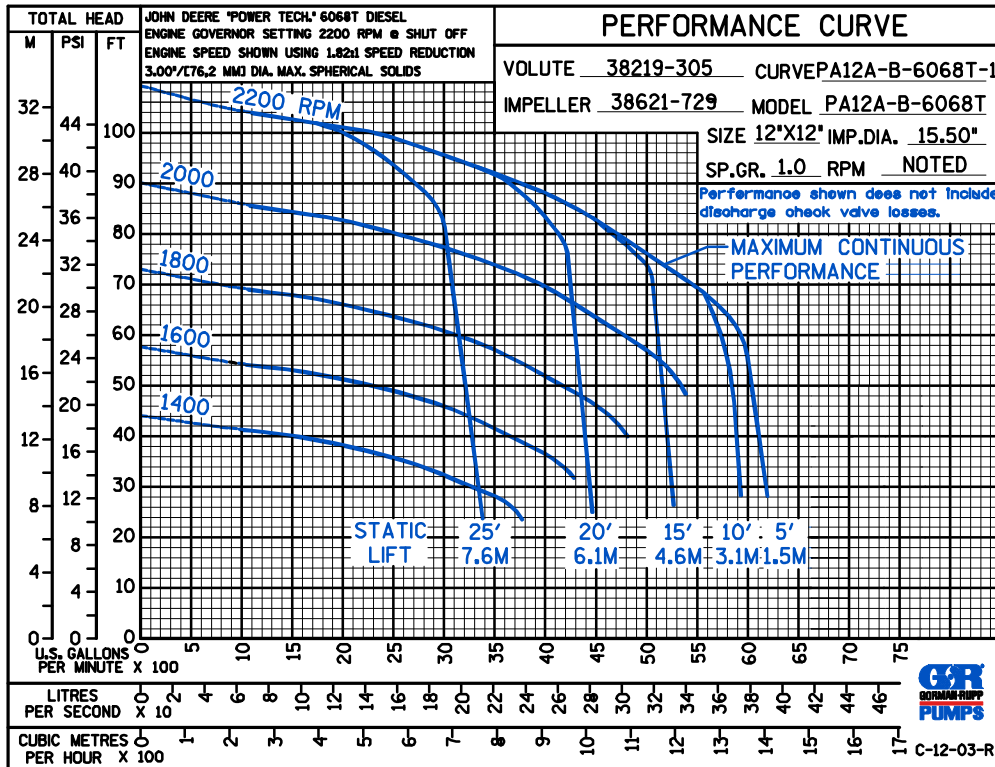
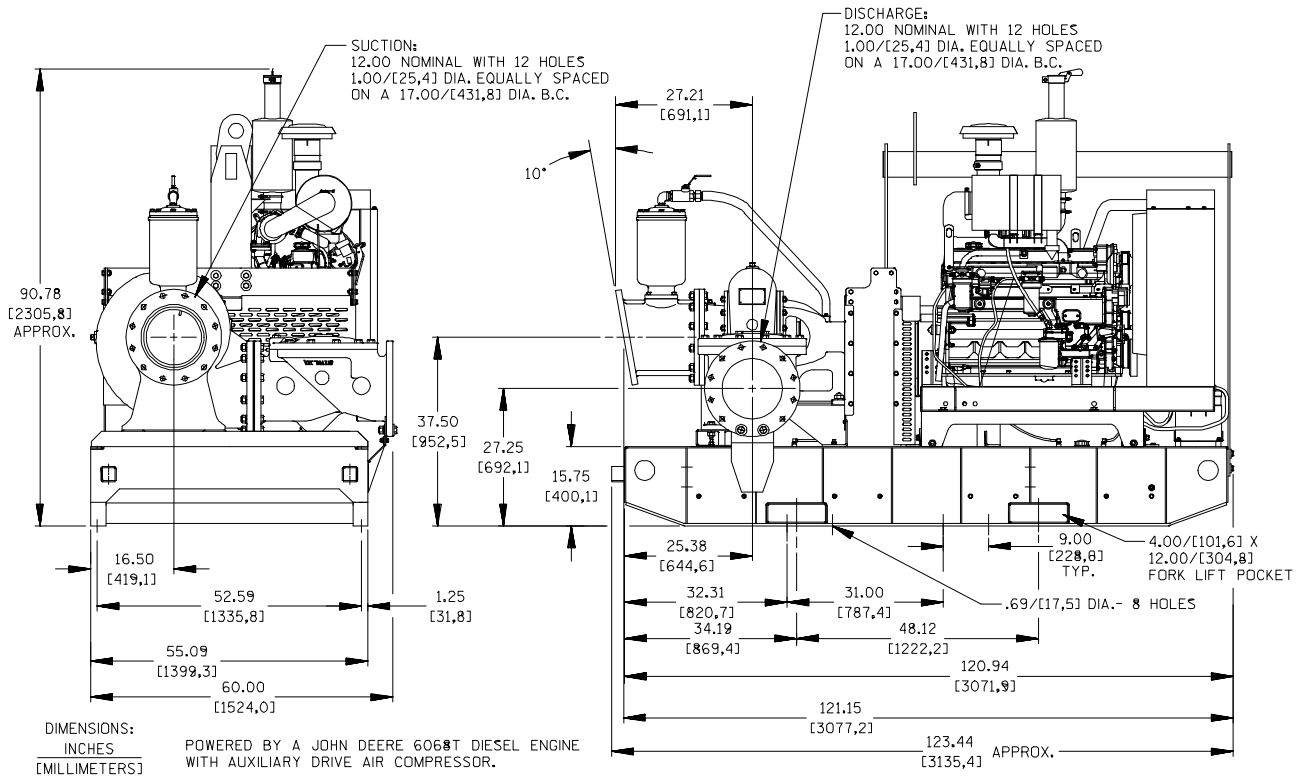
Printed in U.S.A.

Specification Data

APPROXIMATE
DIMENSIONS and WEIGHTS

NET WEIGHT: 6910 LBS. (3134 KG.)
SHIPPING WEIGHT: 7155 LBS. (3245 KG.)
EXPORT CRATE SIZE: 423 CU. FT. (12,0 CU. M.)

SECTION 42, PAGE 1800



THE GORMAN-RUPP COMPANY • MANSFIELD, OHIO

GORMAN-RUPP OF CANADA LIMITED • ST. THOMAS, ONTARIO, CANADA

Specifications Subject to Change Without Notice

Printed in U.S.A.