



**Sound Attenuated  
Diesel Engine Driven  
Environmental Silent Pump  
Priming Assisted Centrifugal Pump  
w/Autostart  
Model PA10A60-4045H FT4-ESP  
Size 10" x 10"**



Total Head		Capacity of Pump in U.S. Gallons per Minute (GPM) at Continuous Performance				
P.S.I.	Feet					
60.7	140	780	780	780	780	780
52.0	120	1590	1840	1920	1920	1920
43.4	100	1840	2400	2820	3020	3020
34.7	80	1920	2520	3020	3500	3620
26.0	60	2020	2580	3100	3630	3820
17.3	40	2100	2640	3180	3720	3920
8.7	20	2180	2700	3260	3720	3920
<b>Suction Lift</b>		<b>24'</b>	<b>20'</b>	<b>15'</b>	<b>10'</b>	<b>5'</b>



**PUMP SPECIFICATIONS**

**Size:** 10" x 10" (254 mm x 254 mm) Flanged.  
**Casing:** Gray Iron 30.  
 Maximum Operating Pressure 98 psi (676 kPa).\*  
**Semi-Open Type, Two Vane Impeller:** Ductile Iron 65-45-12.  
 Handles 3.25" (82,6 mm) Diameter Spherical Solids.  
**Suction Spool:** Gray Iron 30.  
**Impeller Shaft:** Stainless Steel 17-4 PH.  
**Externally Adjustable Front Wear Ring:** Ductile Iron 80-55-06.  
**Intermediate:** Gray Iron 30.  
**Seal Plate:** Gray Iron 30.  
**Seal:** Mechanical, Oil-Lubricated, Double Floating, Self-Aligning. Silicon Carbide Rotating and Stationary Faces. Stainless Steel 316 Stationary Seat. Fluorocarbon Elastomers (DuPont Viton® or Equivalent). Stainless Steel 316 Cage and Spring. Maximum Temperature of Liquid Pumped, 160°F (71°C).\*  
**Priming Chamber:** Gray Iron 30 Housing w/Stainless Steel Float and Linkage.  
**Discharge Check Valve:** Ductile Iron Housing w/Welded Nickel Seat and Buna-N Flapper.  
**Radial Bearing:** Open Single Ball.  
**Thrust Bearing:** Open Double Ball.  
**Bearing and Seal Cavity Lubrication:** SAE 30 Non-Detergent Oil.  
**Gaskets:** Resistant Synthetic Rubber, PTFE, Cork, Vegetable Fiber, and Compressed Synthetic Fibers.  
**O-Rings:** Buna-N.  
**Hardware:** Standard Plated Steel.  
**Bearing and Seal Cavity Oil Level Sight Gauges.**  
*\*Consult Factory for Applications Exceeding Maximum Pressure and/or Temperature Indicated.*  
**Standard Equipment:** Gear-Driven Air Compressor. Hoisting Bail. Soundproof (EPA Average 78.9 dBA at 23 feet [7 meters] Under Load) Lightweight Aluminum Enclosure - Removable for Maintenance of Pump or Engine - w/Padlockable Door Panels. Combination Skid Base w/Fuel Tank. Full Feature Control Panel Single Ball Type Float Switch.\*\*  
**Optional Equipment:** Battery. High Speed (55 MPH/89 KM/H) Single Axle Pneumatic-Tired Wheel Kit w/w<sub>o</sub> DOT-Approved Lights and Electric Brakes. Tandem Axle Over-the-Road Trailer (Meets DOT Requirements) Available w/Either Electric or Hydraulic Surge Brakes, Running Lights, Jack Stands and Safety Cables/Chains. Heated Priming Chamber. Skid Base Kit. Liquid Level Transducer.  
**\*\*50 Ft. (15 m) Standard Length; Dual Switches and Alternate Cable Lengths Available From the Factory.**

**WARNING!**  
Do not use in explosive atmosphere or for pumping volatile flammable liquids.

**ENGINE SPECIFICATIONS**

**Model:** John Deere 4045HFC04.  
**EPA Tier** Tier 4.  
**Type:** Turbocharged Four Cylinder, Diesel Engine w/Air Compressor.  
**Displacement:** 276 Cu. In. (4,5 liters).  
**Governor:** Electronic Isochronous.  
**Lubrication:** Forced Circulation.  
**Air Cleaner:** Dry Type.  
**Fuel Tank:** 110 U.S. Gals. (416 liters).  
**Full Load Operating Time:** 17.5 Hrs.  
**Starter:** 12V Electric.  
**Standard Features:** Muffler w/Weather Cap, DOC/SCR Exhaust After Treatment System.  
**Engine Control Features:** Padlockable Box with Throttle Control, Tachometer, Coolant Temperature, Oil Pressure, Voltage and Overstart Indicators/Shut-downs. Manual/Stop/Auto Keyswitch. Audible Start-up Warning Delay. Electronic Fuel Level Sensor. Fuel Level Display/Alarm/Shutdown.

**JOHN DEERE PUBLISHED PERFORMANCE:**  
 Maximum Gross BHP (Continuous)  
 125 (93 kW) @ 2200 RPM



**GORMAN-RUPP PUMPS**

www.grpumps.com

Specifications Subject to Change Without Notice

Printed in U.S.A.

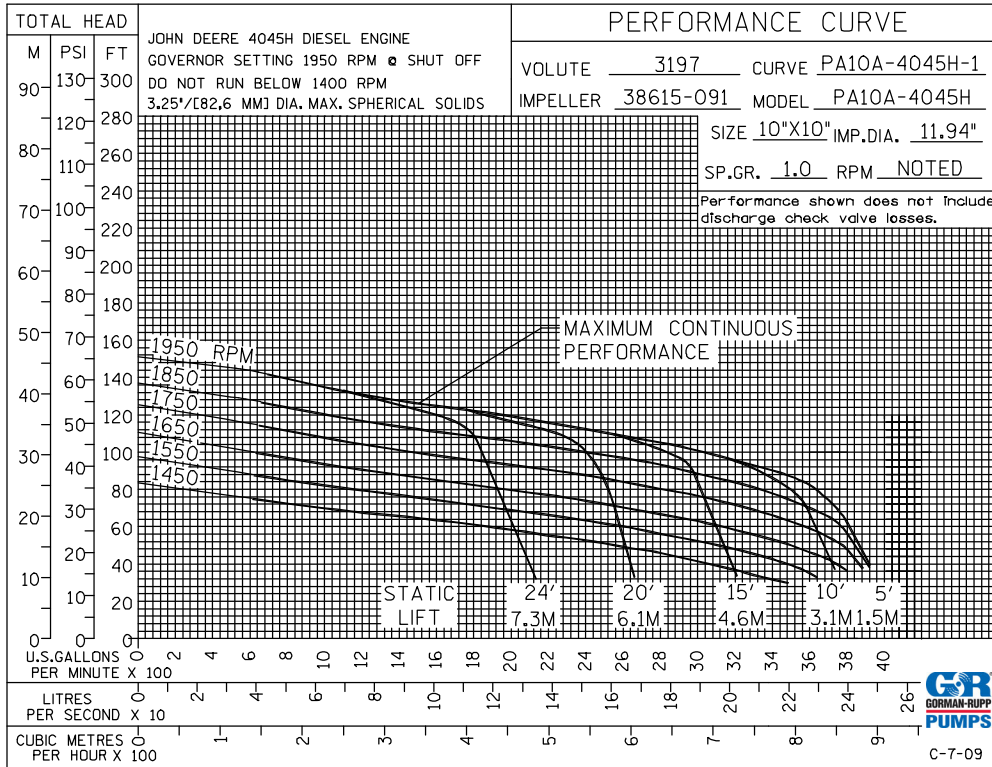
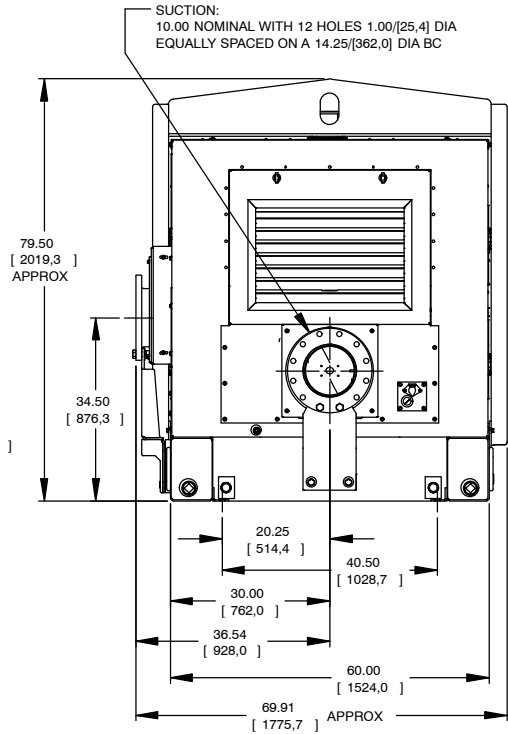
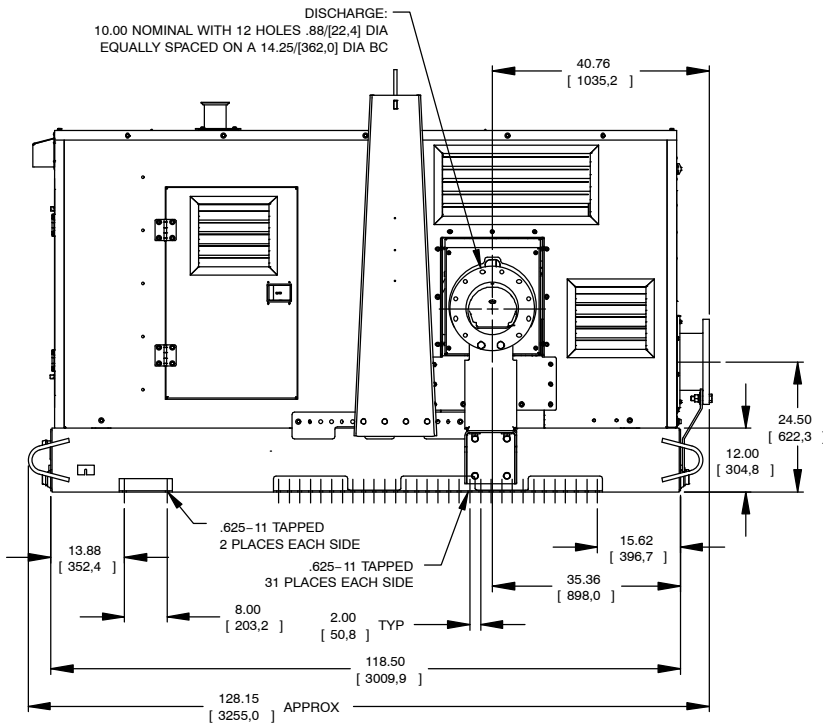
**Specification Data**

**SECTION 42, PAGE 1508**

APPROXIMATE DIMENSIONS and WEIGHTS

NET WEIGHT:  
SHIPPING WEIGHT:  
EXPORT CRATE SIZE:

**SKID BASE**  
5920 LBS. (2685,3 KG.)  
6145 LBS. (2787,3 KG.)  
470 CU. FT. (13,3 CU. M.)



**GORMAN-RUPP PUMPS**

www.grpumps.com

Specifications Subject to Change Without Notice

Printed in U.S.A.