

ACDEU



VARIOUS PATENTS APPLY

Diesel Engine Driven Priming Assisted Centrifugal Pump w/Autostart Model PA6G60-C9 Size 8" x 6"



Total Head		Capacity of Pump in U.S. Gallons per Minute (GPM) at Continuous Performance				
P.S.I.	Feet					
156.4	361	1470	1470	1470	1470	1470
151.7	350	1550	1950	1950	1950	1950
130.1	300	1660	2450	2999	3300	3300
108.4	250	1670	2460	3000	3370	3650
86.7	200	1690	2470	3005	3380	3650
65.0	150	1700	2500	3010	3390	3660
43.4	100	1710	2500	3020	3400	3670
21.7	50	1750	2500	3040	3400	3700
Suction Lift		25'	20'	15'	10'	5'



PUMP SPECIFICATIONS

Size: 8" x 6" (203 mm x 152 mm) Flanges.
Casing: Gray Iron. Maximum Operating Pressure 236 psi (1627 kPa).*
Enclosed Type, Six Vane Impeller: Gray Iron 30.
 Handles 1 7/32" (31 mm) Diameter Spherical Solids.
Impeller Shaft: Stress-Proof Stainless Steel.
Replaceable Wear Rings: Gray Iron 30.
Back Plate: Gray Iron 30.
Bearing Frame: Gray Iron 30.
Seal: Mechanical Type, w/Run-Dry Oil-Lubrication System. Silicon Carbide Rotating Face. Tungsten Titanium Carbide Stationary Face. Fluorocarbon (DuPont Viton® or Equivalent) Elastomers. Stainless Steel 18-8 Cage and Spring.
 Maximum Temperature of Liquid Pumped 160°F (71°C).*
Shaft Sleeve: Chrome Plated Stainless Steel 416.
Priming Chamber: Gray Iron 30 Housing w/Stainless Steel Float and Linkage.
Discharge Check Valve: Gray Iron 30 Housing; Buna-N Flapper.
Radial Bearing: Single Row Ball.
Thrust Bearings: Two Single Row Ball.
Bearing Lubrication: Grease.
Flanges: Gray Iron 30.
Gaskets: Vegetable Fiber, Resistant Synthetic Rubber.
O-Rings: Buna-N.
Hardware: Standard Plated Steel.
Seal Oil Reservoir Sight Gauge.

*Consult Factory for Applications Exceeding Maximum Pressure and/or Temperature Indicated.

Standard Equipment: Gear-Driven Air Compressor. Hoisting Bail. Combination Skid Base w/Fuel Tank. Strainer. Single Ball Type Float Switch.**

Optional Equipment: NPT Threaded Flanges. Battery. EPS w/Submersible Transducer Liquid Level Sensor.**

**50 Ft. (15 m) Standard Length; Dual Switches and Alternate Cable Lengths Available From the Factory.

WARNING!

Do not use in explosive atmosphere or for pumping volatile flammable liquids.

ENGINE SPECIFICATIONS

Model: Caterpillar C9 ACERT™ .
Type: Six Cylinder, Four Cycle, Turbocharged, Charge Air Cooled, Liquid Cooled Diesel Engine.
Displacement: 537 Cu. In. (8,8 Liters).
Governor: Electronic Isochronous.
Lubrication: Forced Circulation.
Air Cleaner: Dry Type.
Oil Reservoir: 8.5 U.S. Gallons (32 Liters) Refill.
Fuel Tank: 236 U.S. Gallons (893 Liters).
Full Load Operating Time: 16.3 Hrs.
Starter: 12V Electric.
Standard Features: Low Oil Pressure and High Coolant Temperature Safety Shut Down Switches. Autostart Instrument Panel Includes: Tachometer, Voltmeter, Hourmeter, Coolant Temperature Gauge, Oil Pressure Gauge, Manual/Stop/Auto Key Switch, 10 Amp Pushbutton Circuit Breaker, Startup Warning Delay. Muffler w/Weather Cap. Throttle Control.

CATERPILLAR PUBLISHED PERFORMANCE:
 Maximum Gross BHP (Industrial) 350 (261 kW) @ 2200 RPM



THE GORMAN-RUPP COMPANY • MANSFIELD, OHIO

GORMAN-RUPP OF CANADA LIMITED • ST. THOMAS, ONTARIO, CANADA

www.grpumps.com

Specifications Subject to Change Without Notice

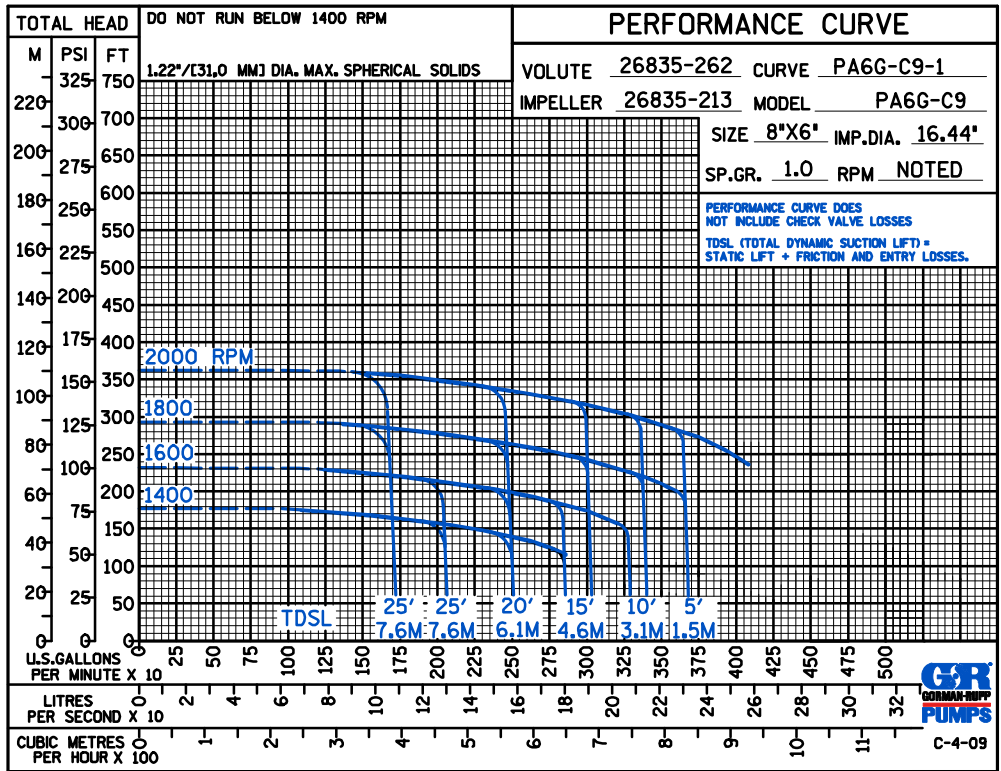
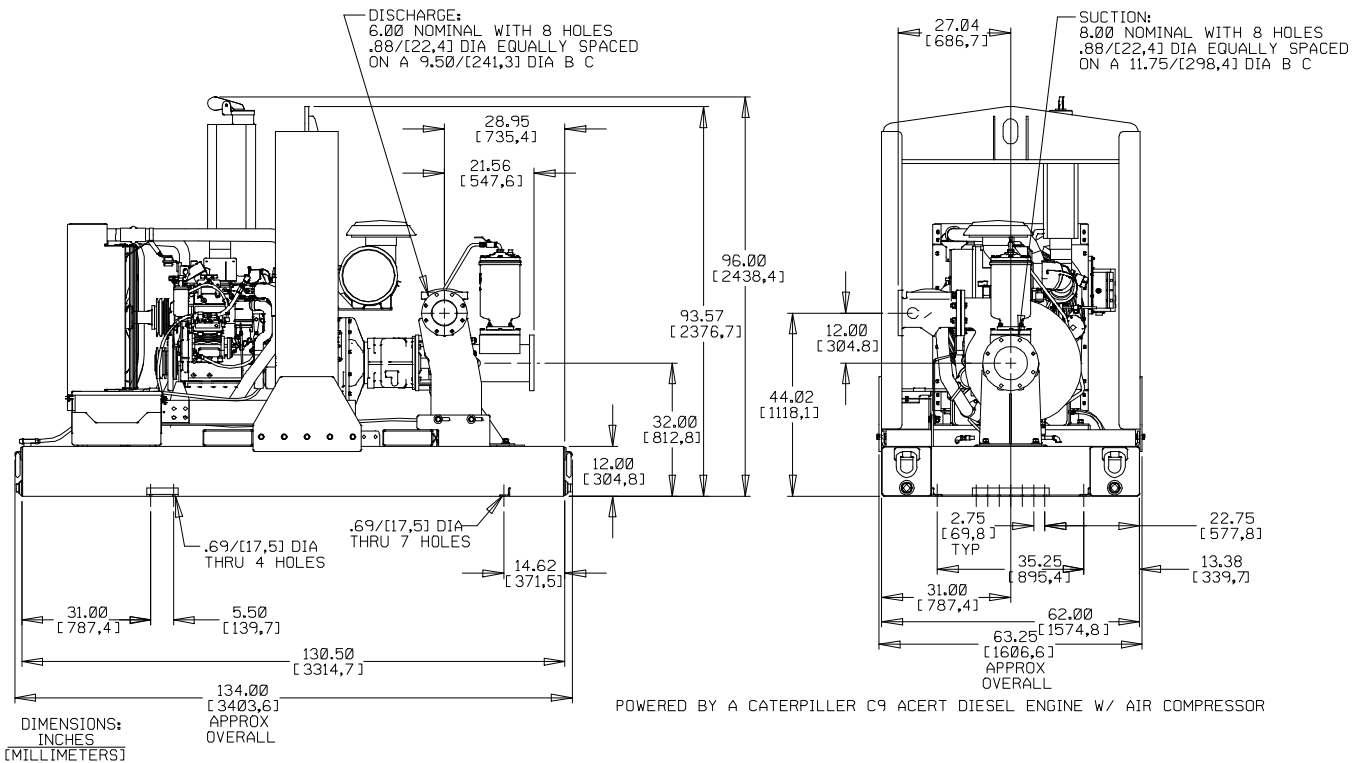
Printed in U.S.A.

Specification Data

SECTION 42, PAGE 1140

APPROXIMATE
DIMENSIONS and WEIGHTS

NET WEIGHT: 7465 LBS. (3386 KGS.)
SHIPPING WEIGHT: 7765 LBS. (3522 KGS.)
EXPORT CRATE SIZE: 583 CU. FT. (16,5 M.)



THE GORMAN-RUPP COMPANY • MANSFIELD, OHIO

GORMAN-RUPP OF CANADA LIMITED • ST. THOMAS, ONTARIO, CANADA

Specifications Subject to Change Without Notice

Printed in U.S.A.