



**Diesel Engine Driven  
Priming Assisted Centrifugal Pump  
w/Autostart  
Model PA6F60-4045T  
Size 6" x 6"**



Total Head		Capacity of Pump in U.S. Gal- lons per Minute (GPM) at Continuous Performance			
P.S.I.	Feet				
52.9	122	600	600	600	600
52.0	120	700	700	700	700
43.4	100	1380	1425	1424	1425
34.7	80	1500	1875	2050	2100
26.0	60	1550	1950	2240	2475
17.4	40	1600	1975	2290	2570
8.7	20	1630	2000	2320	2600
<b>Suction Lift</b>		<b>25'</b>	<b>20'</b>	<b>15'</b>	<b>10'</b>

Photo unavailable at time of publishing

**PUMP SPECIFICATIONS**

- Size:** 6" x 6" (150 mm x 150 mm) Flanged.
- Casing:** Gray Iron. Maximum Operating Pressure 98 psi (676 kPa).\*
- Enclosed Type, Two Vane Impeller:** Gray Iron 30.  
Handles 3" (76,2 mm) Diameter Spherical Solids.
- Impeller Shaft:** Stress-Proof Stainless Steel.
- Replaceable Wear Ring:** Gray Iron 30.
- Back Plate:** Gray Iron 30.
- Bearing Frame:** Gray Iron 30.
- Seal:** Mechanical Type, w/Run-Dry Oil-Lubrication System. Silicon Carbide Rotating Face. Tungsten Titanium Carbide Stationary Face. Fluorocarbon (DuPont Viton® or Equivalent) Elastomers. Stainless Steel 18-8 Cage and Spring. Maximum Temperature of Liquid Pumped 160°F (71°C).\*
- Shaft Sleeve:** Chrome Plated Stainless Steel 416.
- Priming Chamber:** Gray Iron 30 Housing w/Stainless Steel Float and Linkage.
- Discharge Check Valve:** 125# Ductile Iron Housing w/Buna-N Flapper.
- Radial Bearing:** Single Row Ball.
- Thrust Bearing:** Single Row Ball.
- Bearing Lubrication:** Grease.
- Flanges:** Gray Iron 30.
- Gaskets:** Vegetable Fiber, Resistant Synthetic Rubber.
- O-Rings:** Buna-N.
- Hardware:** Standard Plated Steel.
- Seal Oil Reservoir Sight Gauge.**

\*Consult Factory for Applications Exceeding Maximum Pressure and/or Temperature Indicated.

**Standard Equipment:** Gear-Driven Air Compressor. Hoisting Bail. Strainer. Combination Skid Base w/Fuel Tank. Single Ball Type Float Switch\*\*.

**Optional Equipment:** Battery. High Speed (55 MPH/89 KM/H) Wheel Kit with ST225/75R15 Pneumatic Tires. Over-the-Road Trailer (Meets D.O.T. and Transport Canada Requirements) Available w/Either Electric or Hydraulic Surge Brakes, Running Lights, Two Trailer Jack Stands and Safety Chains. EPS w/Submersible Transducer Liquid Level Sensor (50 Ft. [15 M] Cable Standard, Alternate Lengths Available).

\*\*50 Ft. (15 m) Standard Length; Dual Switches and Alternate Cable Lengths Available From the Factory.

**WARNING!**

Do not use in explosive atmosphere or for pumping volatile flammable liquids.

**ENGINE SPECIFICATIONS**

- Model:** John Deere 4045T.
- Type:** Four Cylinder, Four Cycle, Turbocharged, Liquid Cooled Diesel Engine.
- Displacement:** 276 Cu. In. (4,5 liters).
- Governor:** Mechanical.
- Lubrication:** Forced Circulation.
- Air Cleaner:** Dry Type.
- Oil Reservoir:** 17.5 U.S. Qts. (16,6 liters) Dry; 15.5 U.S. Qts. (14,7 liters) Refill.
- Fuel Tank:** 88 U.S. Gals. (330 liters).
- Full Load Operating Time:** 27.5 Hrs.
- Starter:** 12V Electric.
- Standard Features:** Low Oil Pressure and High Coolant Temperature Safety Shut Down Switches/Indicators. Autostart Instrument Panel Includes: Tachometer, Voltmeter, Hourmeter, Coolant Temperature Gauge, Oil Pressure Gauge, Manual/Stop/Auto Key Switch, 10 Amp Pushbutton Circuit Breaker, Audible Startup Warning Delay. Muffler w/Guard and Weather Cap. Throttle Control.

**JOHN DEERE PUBLISHED PERFORMANCE:**  
Maximum Gross Continuous BHP (Industrial) 72 (54 kW) @ 2400 RPM



**THE GORMAN-RUPP COMPANY • MANSFIELD, OHIO**

GORMAN-RUPP OF CANADA LIMITED • ST. THOMAS, ONTARIO, CANADA

www.grpumps.com

Specifications Subject to Change Without Notice

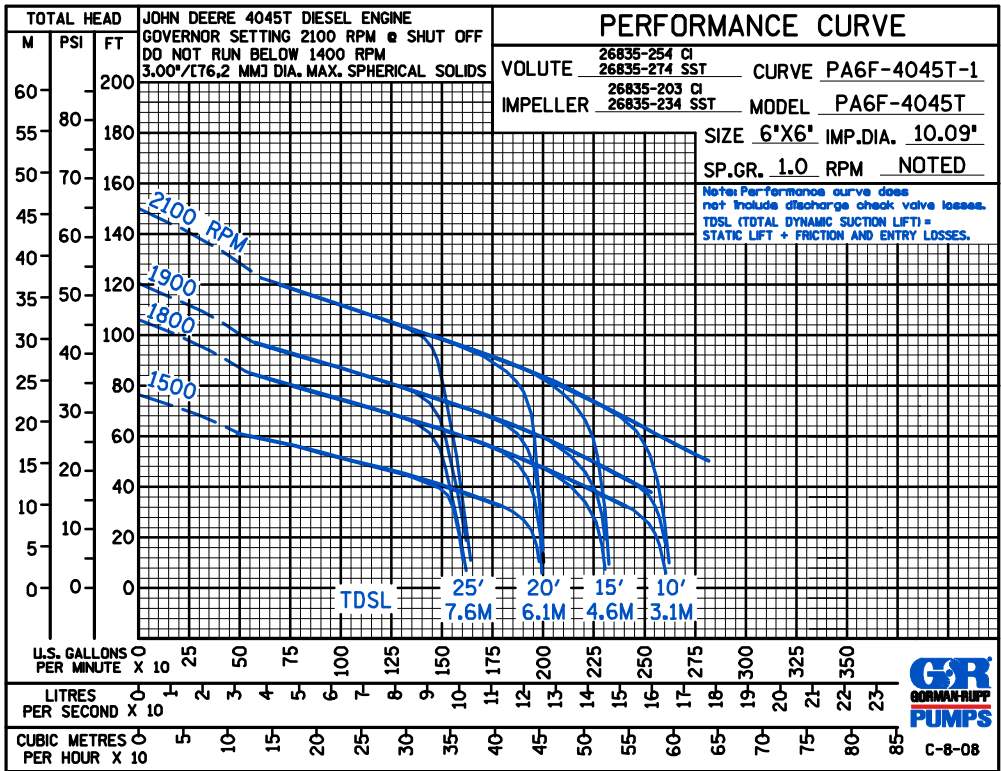
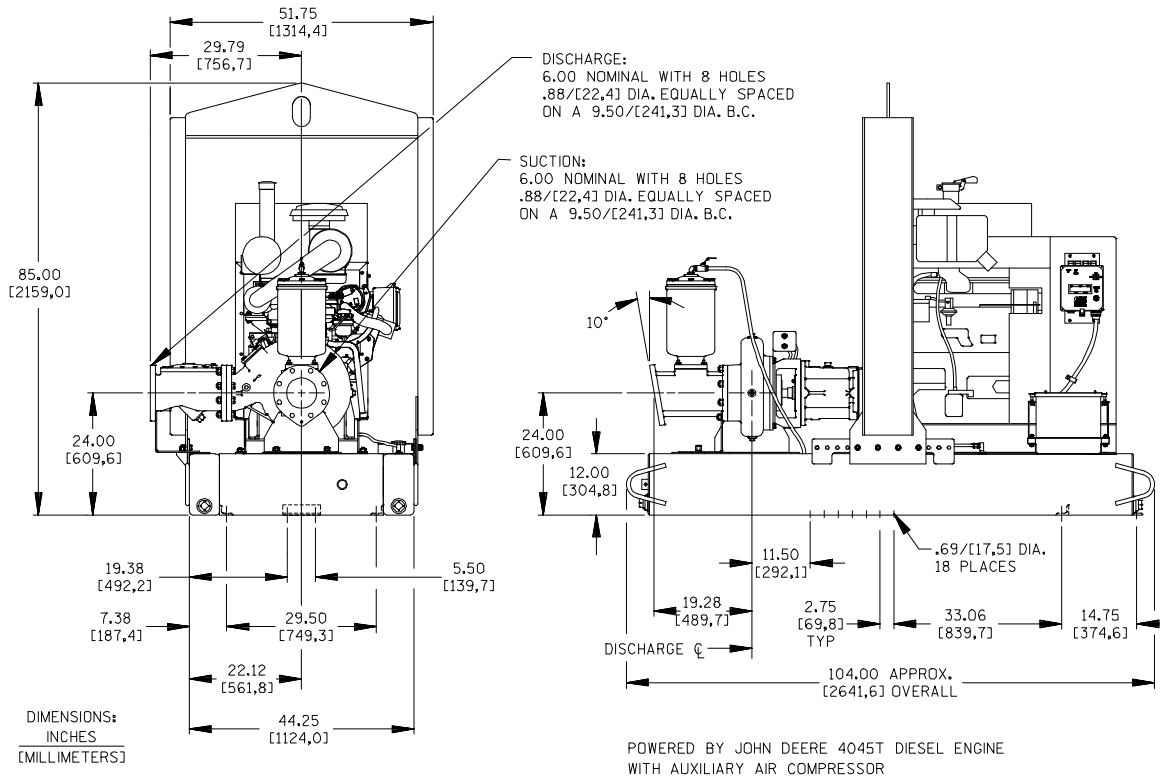
Printed in U.S.A.

**Specification Data**

APPROXIMATE  
DIMENSIONS and WEIGHTS

	<b>SKID BASE</b>	<b>2-WHEEL</b>
<b>NET WEIGHT:</b>	3495 LBS. (1585 KG.)	3990 LBS. (1810 KG.)
<b>SHIPPING WEIGHT:</b>	3645 LBS. (1653 KG.)	3900 LBS. (1810 KG.)
<b>EXPORT CRATE SIZE:</b>	273 CU. FT. (7,7 CU. M.)	

SECTION 42, PAGE 1129



THE GORMAN-RUPP COMPANY • MANSFIELD, OHIO

GORMAN-RUPP OF CANADA LIMITED • ST. THOMAS, ONTARIO, CANADA

Specifications Subject to Change Without Notice

Printed in U.S.A.