



**Diesel Engine Driven  
Priming Assisted Centrifugal Pump  
w/Autostart  
Model PA6F22-4045T  
Size 6" x 6"**



Total Head		Capacity of Pump in U.S. Gallons per Minute (GPM) at Continuous Performance			
P.S.I.	Feet				
52.9	122	600	600	600	600
52.0	120	700	700	700	700
43.4	100	1380	1425	1424	1425
34.7	80	1500	1875	2050	2100
26.0	60	1550	1950	2240	2475
17.4	40	1600	1975	2290	2570
8.7	20	1630	2000	2320	2600
<b>Suction Lift</b>		<b>25'</b>	<b>20'</b>	<b>15'</b>	<b>10'</b>

Photo unavailable at time of publishing

### PUMP SPECIFICATIONS

**Size:** 6" x 6" (150 mm x 150 mm) Flanged.

**Casing:** Stainless Steel 316.

Maximum Operating Pressure 98 psi (676 kPa).\*

**Enclosed Type, Two Vane Impeller:** Stainless Steel 316.

Handles 3" (76,2 mm) Diameter Spherical Solids.

**Impeller Shaft:** Stainless Steel 17-4 PH.

**Replaceable Wear Ring:** Stainless Steel 316.

**Back Plate:** Stainless Steel 316.

**Bearing Frame:** Gray Iron 30.

**Seal:** Mechanical Type, w/Run-Dry Oil-Lubrication System. Silicon Carbide Rotating Face. Tungsten Titanium Carbide Stationary Face. Fluorocarbon Elastomers (DuPont Viton® or Equivalent), Stainless Steel 18-8 Cage and Spring. Maximum Temperature of Liquid Pumped 160°F (71°C).\*

**Shaft Sleeve:** Chrome Plated Stainless Steel 316.

**Priming Chamber:** Stainless Steel 316 Housing, Float and Linkage.

**Discharge Check Valve:** 125# Stainless Steel 316 Housing w/Fluorocarbon Flapper (DuPont Viton® or Equivalent).

**Radial and Thrust Bearings:** Open Single Row Ball.

**Bearing Lubrication:** Grease.

**Flanges:** Stainless Steel 316.

**Gaskets:** Fluorocarbon (DuPont Viton® or Equivalent), Neoprene and Vegetable Fiber w/Cork.

**O-Rings:** Fluorocarbon (DuPont Viton® or Equivalent).

**Wetted Hardware:** Stainless Steel 316.

**Seal Oil Reservoir Sight Gauge.**

\*Consult Factory for Applications Exceeding Maximum Pressure and/or Temperature Indicated.

**Standard Equipment:** Gear-Driven Air Compressor. Hoisting Bail. Strainer. Combination Skid Base w/Fuel Tank. Single Ball Type Float Switch\*\*.

**Optional Equipment:** Battery. High Speed (55 MPH/89 KM/H) Wheel Kit with ST225/75R15 Pneumatic Tires. Over-the-Road Trailer (Meets D.O.T. and Transport Canada Requirements) Available w/ Either Electric or Hydraulic Surge Brakes, Running Lights, Two Trailer Jack Stands and Safety Chains. EPS w/ Submersible Transducer Liquid Level Sensor.\*\*

\*\*50 Ft. (15 m) Standard Length; Dual Switches and Alternate Cable Lengths Available From the Factory.



### ENGINE SPECIFICATIONS

**Model:** John Deere 4045T.

**Type:** Four Cylinder, Four Cycle, Turbocharged, Liquid Cooled Diesel Engine.

**Displacement:** 276 Cu. In. (4,5 liters).

**Governor:** Mechanical.

**Lubrication:** Forced Circulation.

**Air Cleaner:** Dry Type.

**Oil Reservoir:** 17.5 U.S. Qts. (16,6 liters) Dry;  
15.5 U.S. Qts. (14,7 liters) Refill.

**Fuel Tank:** 88 U.S. Gals. (330 liters).

**Full Load Operating Time:** 27.5 Hrs.

**Starter:** 12V Electric.

**Standard Features:** Low Oil Pressure and High Coolant Temperature Safety Shut Down Switches/Indicators. Autostart Instrument Panel Includes: Tachometer, Voltmeter, Hourmeter, Coolant Temperature Gauge, Oil Pressure Gauge, Manual/Stop/Auto Key Switch, 10 Amp Pushbutton Circuit Breaker, Audible Startup Warning Delay, Muffler w/Guard and Weather Cap. Throttle Control.

### JOHN DEERE PUBLISHED PERFORMANCE:

Maximum Gross Continuous BHP (Industrial) 72 (54 kW) @ 2400 RPM



**THE GORMAN-RUPP COMPANY • MANSFIELD, OHIO**

GORMAN-RUPP OF CANADA LIMITED • ST. THOMAS, ONTARIO, CANADA

www.grpumps.com

Specifications Subject to Change Without Notice

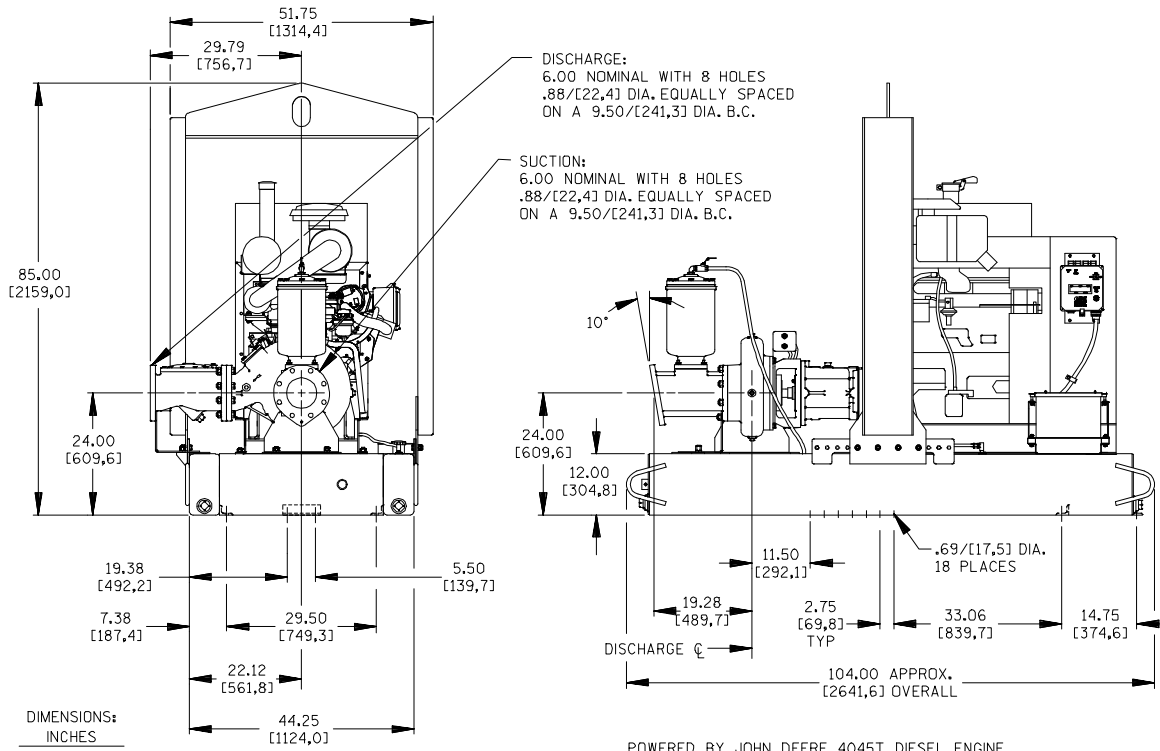
Printed in U.S.A.

**Specification Data**

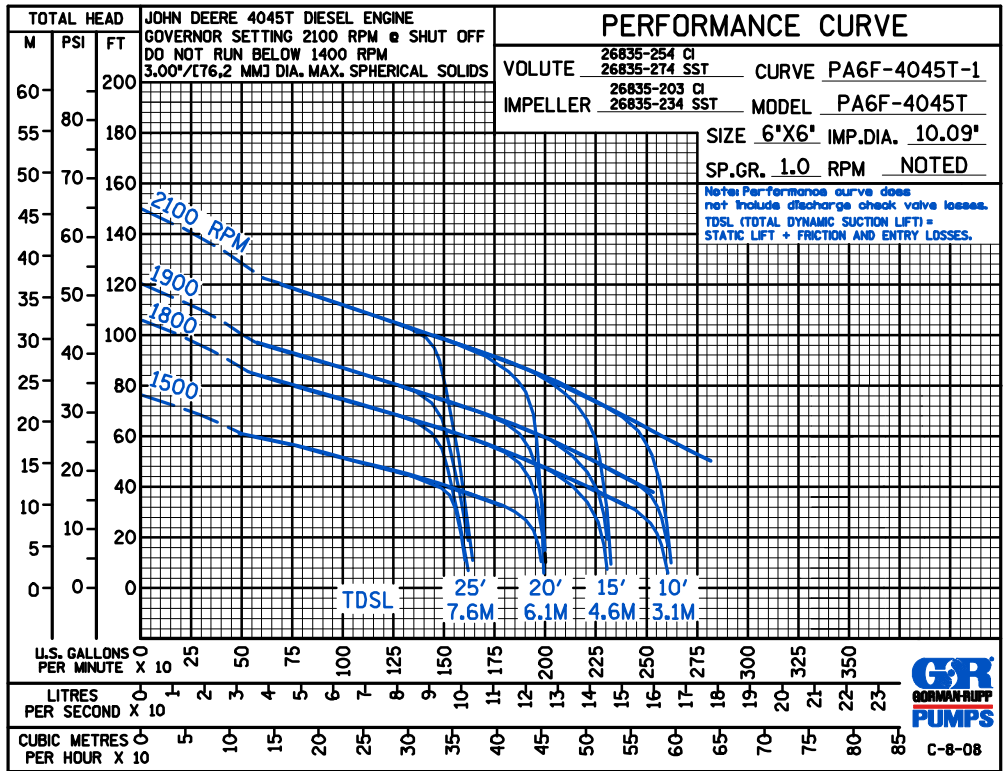
APPROXIMATE  
DIMENSIONS and WEIGHTS

	<b>SKID BASE</b>	<b>2-WHEEL</b>
<b>NET WEIGHT:</b>	3430 LBS. (1555 KG.)	3990 LBS. (1810 KG.)
<b>SHIPPING WEIGHT:</b>	3730 LBS. (1691 KG.)	3990 LBS. (1810 KG.)
<b>EXPORT CRATE SIZE:</b>	299 CU. FT. (8,5 CU. M.)	

SECTION 42, PAGE 1127



DIMENSIONS:  
INCHES  
[MILLIMETERS]



THE GORMAN-RUPP COMPANY • MANSFIELD, OHIO

GORMAN-RUPP OF CANADA LIMITED • ST. THOMAS, ONTARIO, CANADA

Specifications Subject to Change Without Notice

Printed in U.S.A.