

A C D E U



**Diesel Engine Driven
Priming Assisted Centrifugal Pump
w/Autostart
Model PA6C60-4045D
Size 6" x 6"**



Total Head		Capacity of Pump in U.S. Gallons per Minute (GPM) at Continuous Performance				
P.S.I.	Feet					
63.3	146	200	200	200	200	200
60.7	140	400	400	400	400	400
52.0	120	820	1000	1000	1000	1000
43.4	100	960	1380	1420	1420	1420
34.7	80	1040	1500	1770	1770	1770
26.0	60	1100	1510	1815	2050	2050
17.4	40	1140	1505	1820	2120	2250
8.7	20	1200	1550	1820	2150	2360
Suction Lift		25'	20'	15'	10'	5'

PUMP SPECIFICATIONS

- Size:** 6" x 6" (152 mm x 152 mm) Flanged.
- Casing:** Ductile Iron No. 65-45-12. Maximum Operating Pressure 100 psi (690 kPa).*
- Open Type, Two Vane Impeller:** Ductile Iron No. 65-45-12. Handles 3" (76,2 mm) Diameter Spherical Solids.
- Impeller Shaft:** Stainless Steel No. 17-4 PH.
- Replaceable Wear Plate:** Ductile Iron No. 80-60-03.
- Removeable Cleanout Cover Plate:** Gray Iron No. 30.
- Intermediate Bracket:** Gray Iron No. 30.
- Seal Plate:** Gray Iron No. 30.
- Seal:** Mechanical, Oil-Lubricated. Silicon Carbide Rotating and Stationary Faces. Stainless Steel No. 316 Stationary Seat. Fluorocarbon Elastomers (DuPont Viton® or Equivalent). Stainless Steel No. 18-8 Cage and Spring. Maximum Temperature of Liquid Pumped, 160°F (71°C).*
- Shaft Sleeve:** Stainless Steel No. 17-4 PH.
- Priming Chamber:** Gray Iron No. 30.
- Discharge Check Valve:** Gray Iron No. 30 Housing w/Buna-N Flapper.
- Radial and Thrust Bearings:** Open Double Ball.
- Bearing and Seal Cavity Lubrication:** SAE No. 30 Non-Detergent Oil.
- Flanges:** Gray Iron No. 30.
- Gaskets:** Resistant Synthetic Rubber, Cork, PTFE, Vegetable Fiber, and Compressed Synthetic Fibers.
- Hardware:** Standard Plated Steel.
- Bearing and Seal Cavity Oil Level Sight Gauges.**

*Consult Factory for Applications Exceeding Maximum Pressure and/or Temperature Indicated.

Standard Equipment: Gear-Driven Air Compressor. Hoisting Bail. Combination Skid Base w/Fuel Tank. Strainer. Single Ball Type Float Switch.**

**50 Ft. (15 m) Standard Length; Dual Switches and Alternate Cable Lengths Available From the Factory.

Optional Equipment: Battery. High Speed (55 MPH/89 KM/H) Wheel Kit with ST225/75R15 Pneumatic Tires. Over-the-Road Trailer (Meets D.O.T. and Transport Canada Requirements) Available w/Either Electric or Hydraulic Surge Brakes, Running Lights, Two Trailer Jack Stands and Safety Chains. EPS w/Submersible Transducer Liquid Level Sensor (50 Ft. [15 M] Cable Standard, Alternate Lengths Available).



SHOWN WITH OPTIONAL NPT SUCTION AND DISCHARGE FLANGES

WARNING!
Do not use in explosive atmosphere or for pumping volatile flammable liquids.

ENGINE SPECIFICATIONS

- Model:** John Deere 4045D "Power Tech".
- Type:** Four Cylinder, Four Cycle, Liquid Cooled Diesel Engine.
- Displacement:** 276 Cu. In. (4,5 liters).
- Governor:** Mechanical.
- Lubrication:** Forced Circulation.
- Air Cleaner:** Dry Type.
- Oil Reservoir:** 9 U.S. Qts. (8,5 liters) Dry; 8 U.S. Qts. (7,6 liters) Refill.
- Fuel Tank:** 88 U.S. Gals. (330 liters).
- Full Load Operating Time:** 26.1 Hrs.
- Starter:** 12V Electric.
- Standard Features:** Low Oil Pressure, High Coolant Temperature and Start Failure Safety Shut Down Switches/Indicators. Throttle Control. Autostart Instrument Panel Includes: Tachometer, Voltmeter, Hourmeter, Coolant Temperature and Oil Pressure Indicators, Manual/Stop/Auto Key Switch, 10 Amp Fuse, Audible Startup Warning Delay. Muffler w/Guard and Weather Cap.

JOHN DEERE PUBLISHED PERFORMANCE:
Maximum Continuous BHP 76 (57 kW) @ 2500 RPM
Maximum Dynamic BHP 80 (60 kW) @ 2500 RPM



THE GORMAN-RUPP COMPANY • MANSFIELD, OHIO

GORMAN-RUPP OF CANADA LIMITED • ST. THOMAS, ONTARIO, CANADA

www.grpumps.com

Specifications Subject to Change Without Notice

Printed in U.S.A.

Specification Data

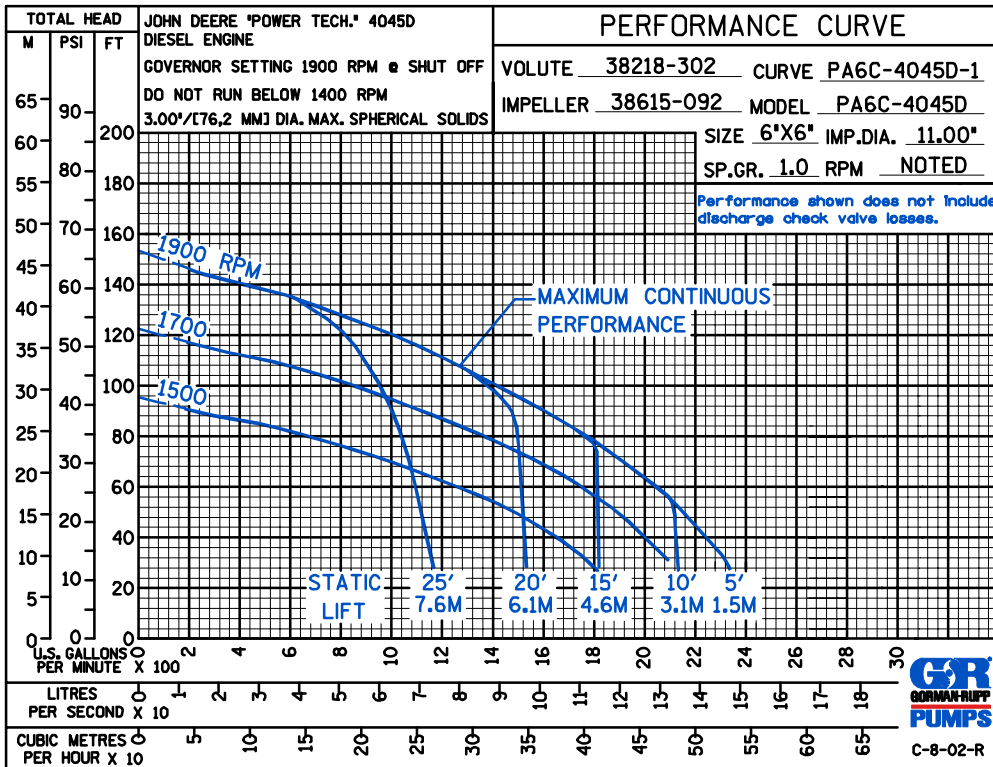
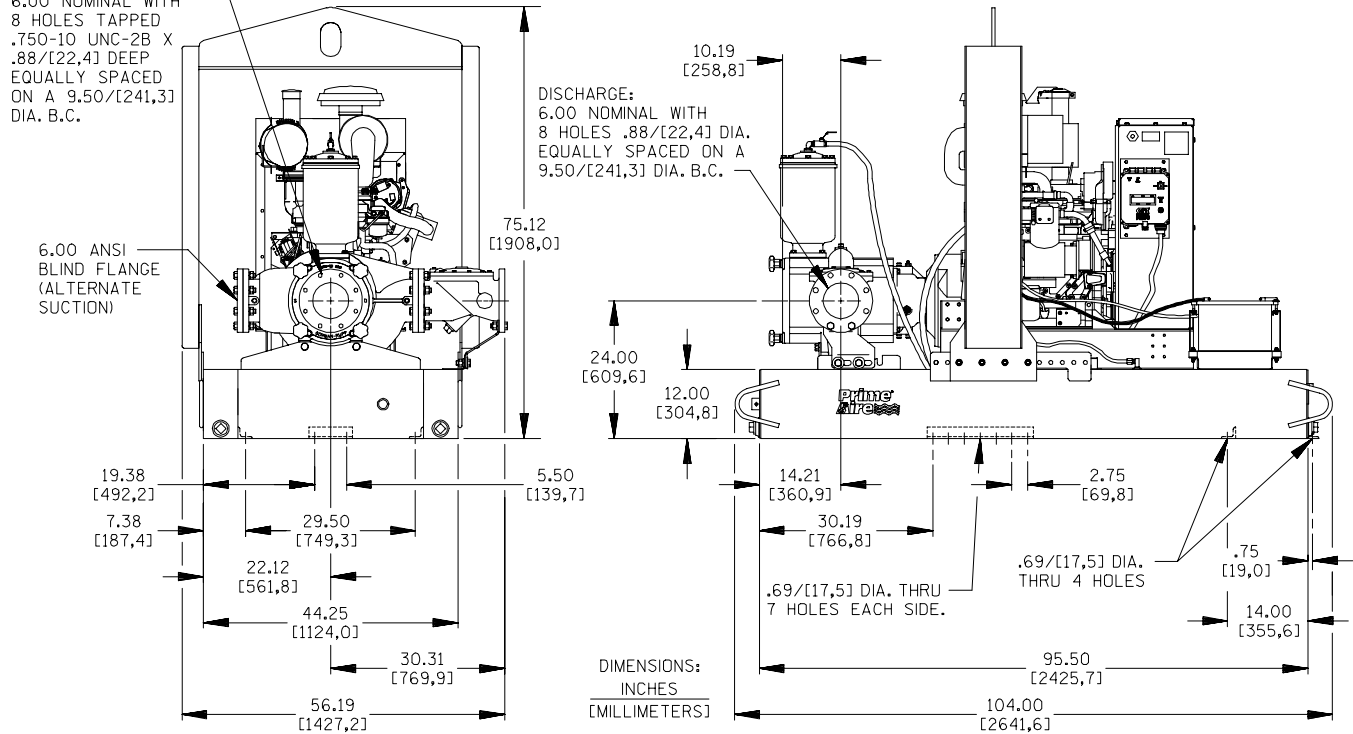
APPROXIMATE
DIMENSIONS and WEIGHTS

	SKID BASE	2-WHEEL
NET WEIGHT:	3310 LBS. (1501 KG.)	3600 LBS. (1633 KG.)
SHIPPING WEIGHT:	3460 LBS. (1569 KG.)	3600 LBS. (1633 KG.)
EXPORT CRATE SIZE:	247 CU. FT. (7 CU. M.)	

SECTION 42, PAGE 1100

SUCTION:
6.00 NOMINAL WITH
8 HOLES TAPPED
.750-10 UNC-2B X
.88/[22,4] DEEP
EQUALLY SPACED
ON A 9.50/[241,3]
DIA. B.C.

POWERED BY: JOHN DEERE 4045D DIESEL ENGINE .



THE GORMAN-RUPP COMPANY • MANSFIELD, OHIO

GORMAN-RUPP OF CANADA LIMITED • ST. THOMAS, ONTARIO, CANADA

Specifications Subject to Change Without Notice

Printed in U.S.A.