

ACDEU



# Priming Assisted Centrifugal Pump w/Autostart Model PA6A60-4045D Size 6" x 6"



Total Head		Capacity of Pump in U.S. Gallons per Minute (GPM) at Continuous Performance			
P.S.I.	Feet				
60.7	136	310	310	310	310
52.0	120	700	720	720	720
43.4	100	765	1040	1180	1180
34.7	80	800	1085	1345	1500
26.0	60	835	1130	1420	1700
17.3	40	850	1180	1485	1720
Suction Lift		25'	20'	15'	10'



**PUMP SPECIFICATIONS**

**Size:** 6" x 6" NPT (152 mm x 152 mm) - Female.  
**Casing:** Gray Iron 30.  
 Maximum Operating Pressure 99 psi (683 kPa).\*  
**Semi-Open Type, Two Vane Impeller:** Ductile Iron 65-45-12.  
 Handles 3" (76,2 mm) Diameter Spherical Solids.  
**Impeller Shaft:** Stainless Steel 17-4 PH.  
**Shaft Sleeve:** Stainless Steel 17-4 PH.  
**Replaceable Wear Plate:** Steel 1015.  
**Intermediate Bracket:** Gray Iron 30.  
**Seal Plate:** Gray Iron 30.  
**Seal:** Mechanical, Oil-Lubricated, Double Floating Self-Aligning. Silicon Carbide Rotating and Stationary Faces. Stainless Steel 316 Stationary Seat. Fluorocarbon Elastomers (DuPont Viton® or Equivalent). Stainless Steel 18-8 Cage and Spring. Maximum Temperature of Liquid Pumped 160°F (71°C).\*  
**Priming Chamber:** Gray Iron 30 Housing w/Stainless Steel Float and Linkage.  
**Discharge Check Valve:** Ductile Iron w/Buna-N Flapper.  
**Radial Bearing:** Open Single Row Ball.  
**Thrust Bearing:** Open Double Row Ball.  
**Bearing and Seal Cavity Lubrication:** SAE 30 Non-Detergent Oil.  
**Flanges:** Gray Iron 30.  
**Gaskets:** Resistant Synthetic Rubber, Cork, PTFE, Vegetable Fiber, and Compressed Synthetic Fibers.  
**Hardware:** Standard Plated Steel.  
**Bearing and Seal Cavity Oil Level Sight Gauges.**  
*\*Consult Factory for Applications Exceeding Maximum Pressure and/or Temperature Indicated.*  
**Standard Equipment:** Hoisting Bail. Skid Base. Strainer. Gear-Driven Air Compressor.  
**Optional Equipment:** Battery. G-R Hard Iron Impeller. High Speed (55 MPH/89 KM/H) Single Axle Pneumatic-Tired Wheel Kit w/wo DOT-Approved Lights and Electric Brakes. Tandem Axle Over-the-Road Trailer (Meets DOT Requirements) Available w/Either Electric or Hydraulic Surge Brakes, Running Lights, Jack Stands and Safety Cables. EPS w/Submersible Transducer Liquid Level Sensor.\*\*  
**\*\*50 Ft. (15 m) Standard Length;  
 150 Ft. (46 m) Maximum; Specify Length at Time of Order.**

**WARNING!**  
 Do not use in explosive atmosphere or for pumping volatile flammable liquids.

**ENGINE SPECIFICATIONS**

**Model:** John Deere 4045D "Power Tech".  
**Type:** Four Cylinder, Four Cycle, Liquid Cooled Diesel Engine.  
**Displacement:** 276 Cu. In. (4,5 liter).  
**Governor:** Mechanical.  
**Lubrication:** Forced Circulation.  
**Air Cleaner:** Dry Type.  
**Oil Reservoir:** 9 U.S. Qts. (8,5 liter) Dry; 8 U.S. Qts. (7,6 liter) Refill.  
**Fuel Tank:** 68.4 U.S. Gallons (259 liter).  
**Full Load Operating Time:** 25.1 Hrs.  
**Starter:** 12V Electric.  
**Standard Features:** Low Oil Pressure and High Coolant Temperature Safety Shut Down Switches/Indicators. Autostart Instrument Panel Includes: Tachometer, Voltmeter, Hour-meter, Coolant Temperature Gauge, Oil Pressure Gauge, Manual/Stop/Auto Key Switch, 10 Amp Pushbutton Circuit Breaker, Audible Startup Warning Delay. Muffler w/Guard and Weather Cap. Throttle Control.  
**JOHN DEERE PUBLISHED PERFORMANCE:**  
 Maximum Net Continuous BHP  
 72 (54 kW) @ 2500 RPM



**THE GORMAN-RUPP COMPANY • MANSFIELD, OHIO**  
 GORMAN-RUPP OF CANADA LIMITED • ST. THOMAS, ONTARIO, CANADA

www.grpumps.com

Specifications Subject to Change Without Notice

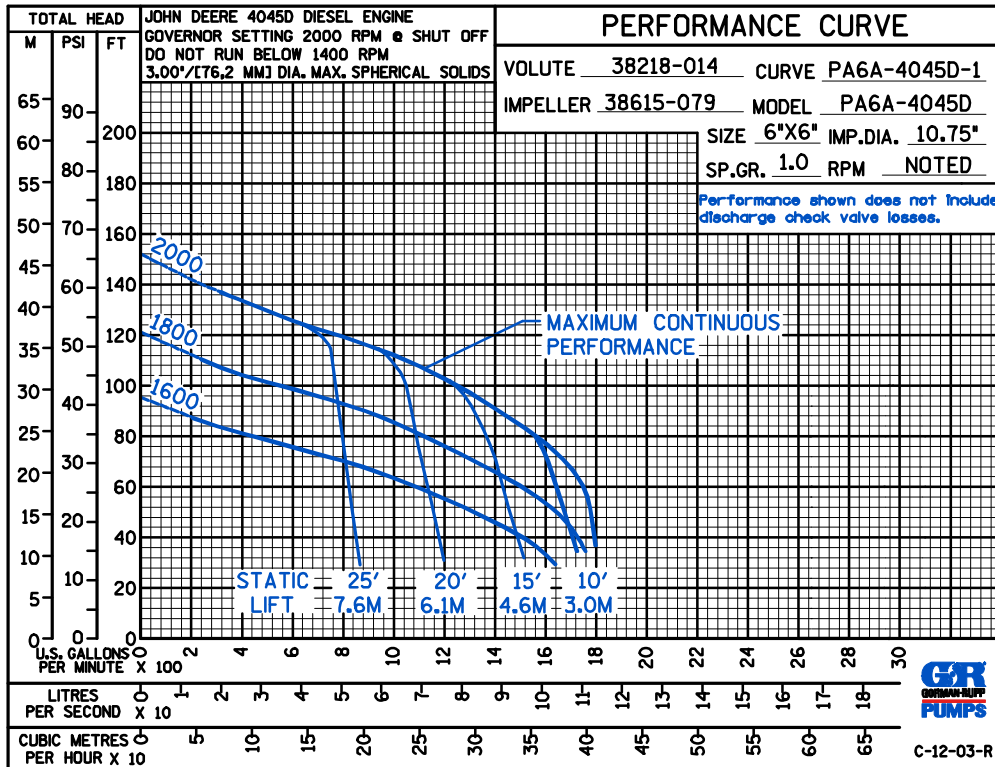
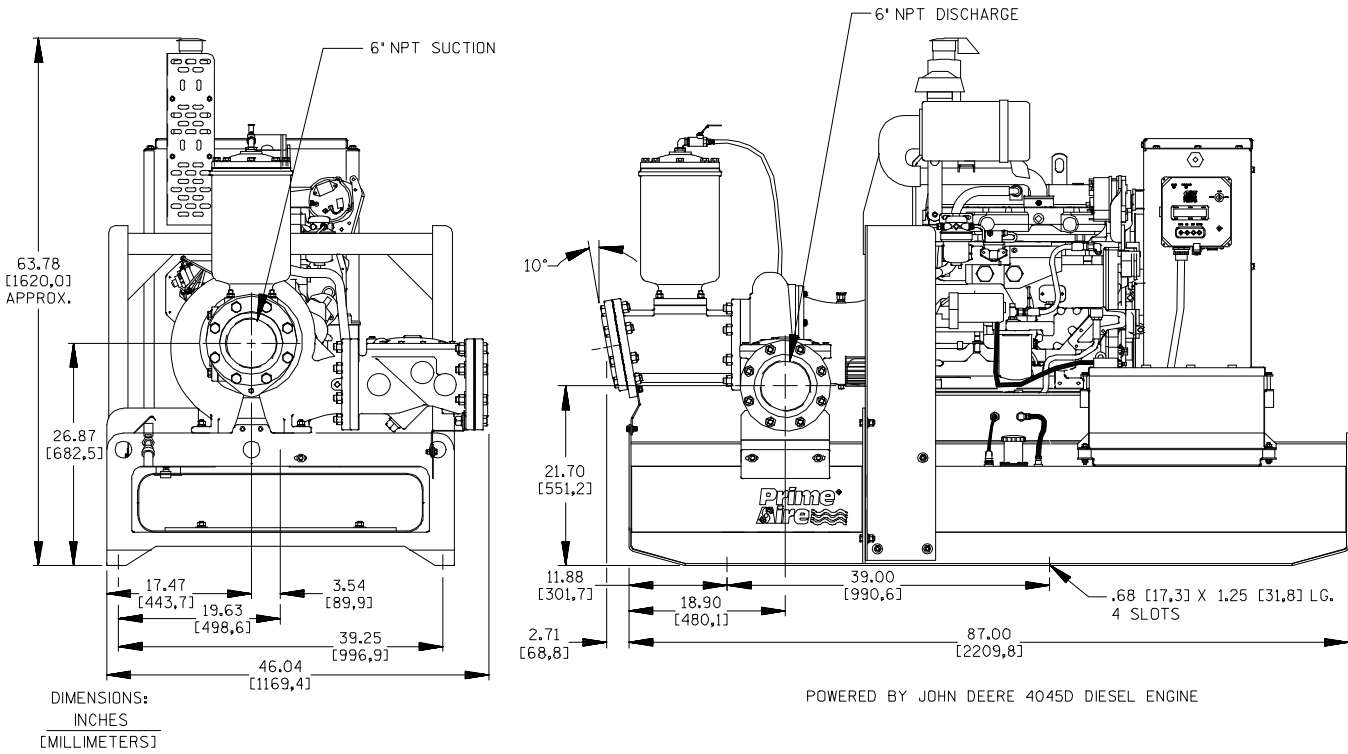
Printed in U.S.A.

**Specification Data**

**SECTION 42, PAGE 900**

APPROXIMATE  
DIMENSIONS and WEIGHTS

	<b>SKID BASE</b>	<b>2-WHEEL</b>
<b>NET WEIGHT:</b>	2922 LBS. (1325 KG.)	3250 LBS. (1474 KG.)
<b>SHIPPING WEIGHT:</b>	3230 LBS. (1465 KG.)	3250 LBS. (1474 KG.)
<b>EXPORT CRATE SIZE:</b>	229 CU. FT. (6,5 CU. M.)	400 CU. FT. (11,3 CU. M.)



**THE GORMAN-RUPP COMPANY • MANSFIELD, OHIO**

GORMAN-RUPP OF CANADA LIMITED • ST. THOMAS, ONTARIO, CANADA

Specifications Subject to Change Without Notice

Printed in U.S.A.