



# Priming Assisted Centrifugal Pump w/Autostart Model PA6A60-F4L Size 6" x 6"



| Total Head          |      | Capacity of Pump in U.S. Gallons per Minute (GPM) at Continuous Performance |            |            |            |
|---------------------|------|---|------------|------------|------------|
| P.S.I.              | Feet |   |            |            |            |
| 60.7                | 140  | 300   | 300        | 300        | 300        |
| 52.0                | 120  | 700   | 820        | 820        | 820        |
| 43.4                | 100  | 760   | 1040       | 1200       | 1200       |
| 34.7                | 80   | 790   | 1080       | 1355       | 1510       |
| 26.0                | 60   | 820   | 1125       | 1420       | 1640       |
| 17.3                | 40   | 840   | 1180       | 1480       | 1660       |
| <b>Suction Lift</b> |      | <b>25'</b>  | <b>20'</b> | <b>15'</b> | <b>10'</b> |

**PUMP SPECIFICATIONS**

**Size:** 6" x 6" NPT (152 mm x 152 mm) - Female.  
**Casing:** Gray Iron 30.  
 Maximum Operating Pressure 99 psi (683 kPa).\*  
**Semi-Open Type, Two Vane Impeller:** Ductile Iron 65-45-12. Handles 3" (76,2 mm) Diameter Spherical Solids.  
**Impeller Shaft:** Stainless Steel 17-4 PH.  
**Shaft Sleeve:** Stainless Steel 17-4 PH.  
**Replaceable Wear Plate:** Steel 1015.  
**Intermediate Bracket:** Gray Iron 30.  
**Seal Plate:** Gray Iron 30.  
**Seal:** Mechanical, Oil-Lubricated, Double Floating Self-Aligning. Silicon Carbide Rotating and Stationary Faces. Stainless Steel 316 Stationary Seat. Fluorocarbon Elastomers (DuPont Viton® or Equivalent). Stainless Steel 18-8 Cage and Spring. Maximum Temperature of Liquid Pumped 160°F (71°C).\*  
**Priming Chamber:** Gray Iron 30 Housing w/Stainless Steel Float and Linkage.  
**Discharge Check Valve:** Ductile Iron w/Buna-N Flapper.  
**Radial Bearing:** Open Single Row Ball.  
**Thrust Bearing:** Open Double Row Ball.  
**Bearing and Seal Cavity Lubrication:** SAE 30 Non-Detergent Oil.  
**Flanges:** Gray Iron 30.  
**Gaskets:** Resistant Synthetic Rubber, Cork, PTFE, Vegetable Fiber, and Compressed Synthetic Fibers.  
**Hardware:** Standard Plated Steel.  
**Bearing and Seal Cavity Oil Level Sight Gauges.**  
*\*Consult Factory for Applications Exceeding Maximum Pressure and/or Temperature Indicated.*  
**Standard Equipment:** Belt-Driven Air Compressor. Hoisting Bail. Skid Base. Strainer. Single Ball Type Float Switch.\*\*  
**Optional Equipment:** Battery. G-R Hard Iron Impeller. High Speed (55 MPH/89 KM/H) Single Axle Pneumatic-Tired Wheel Kit w/wo DOT-Approved Lights and Electric Brakes. Tandem Axle Over-the-Road Trailer (Meets DOT Requirements) Available w/Either Electric or Hydraulic Surge Brakes, Running Lights, Jack Stands and Safety Cables/Chains. EPS w/Submersible Transducer Liquid Level Sensor. \*\*  
**\*\*50 Ft. (15 m) Standard Length;  
 150 Ft. (46 m) Maximum; Specify Length at Time of Order.**



**WARNING!**  
Do not use in explosive atmosphere or for pumping volatile flammable liquids.

**ENGINE SPECIFICATIONS**

**Model:** Deutz D914L4.  
**Type:** Four Cylinder, Four Cycle, Air Cooled Diesel Engine.  
**Displacement:** 263.2 Cu. In. (4,3 Liters).  
**Governor:** Mechanical.  
**Lubrication:** Forced Circulation.  
**Air Cleaner:** Dry Element.  
**Oil Reservoir:** 13.7 U.S. Qts. (13 Liters) Dry; 12.7 U.S. Qts. (12 Liters) Refill.  
**Fuel Tank:** 68.4 U.S. Gallons (259 Liters).  
**Full Load Operating Time:** 19.2 Hrs.  
**Starter:** 12V Electric.  
**Standard Features:** High Oil Temperature, Low Oil Pressure, V-belt, Alternator And Start Failure Safety Shut Down Switches/Indicators. Fuel Level Gauge. Throttle Control. Autostart Instrument Panel Includes: Temperature Gauge, Oil Pressure Gauge, Ammeter, Hourmeter, Tachometer, Stop/Auto Key Switch, 15 Amp Fuse, Audible Startup Warning Delay. Muffler w/Guard and Weather Cap.

**DEUTZ PUBLISHED PERFORMANCE:**  
 Maximum Gross Continuous B.H.P.  
 73.7 (55 kW) @ 2300 RPM



GORMAN-RUPP PUMPS

www.grpumps.com

Specifications Subject to Change Without Notice

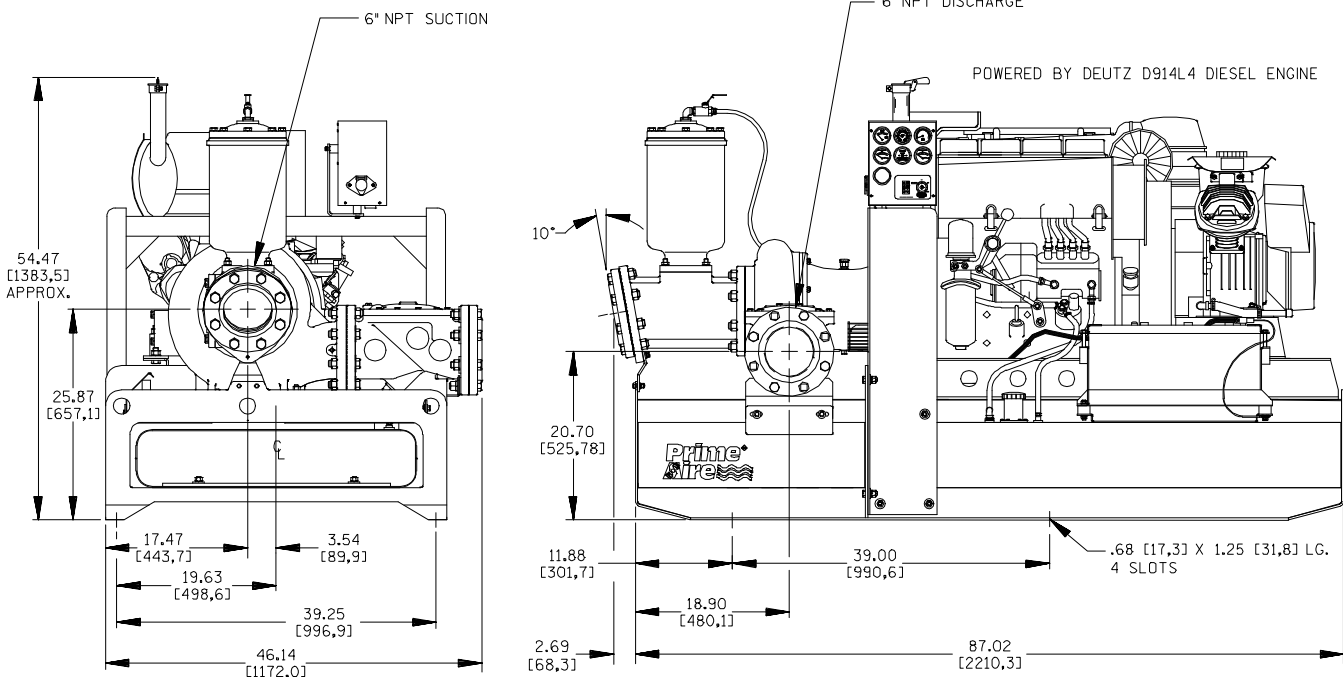
Printed in U.S.A.

# Specification Data

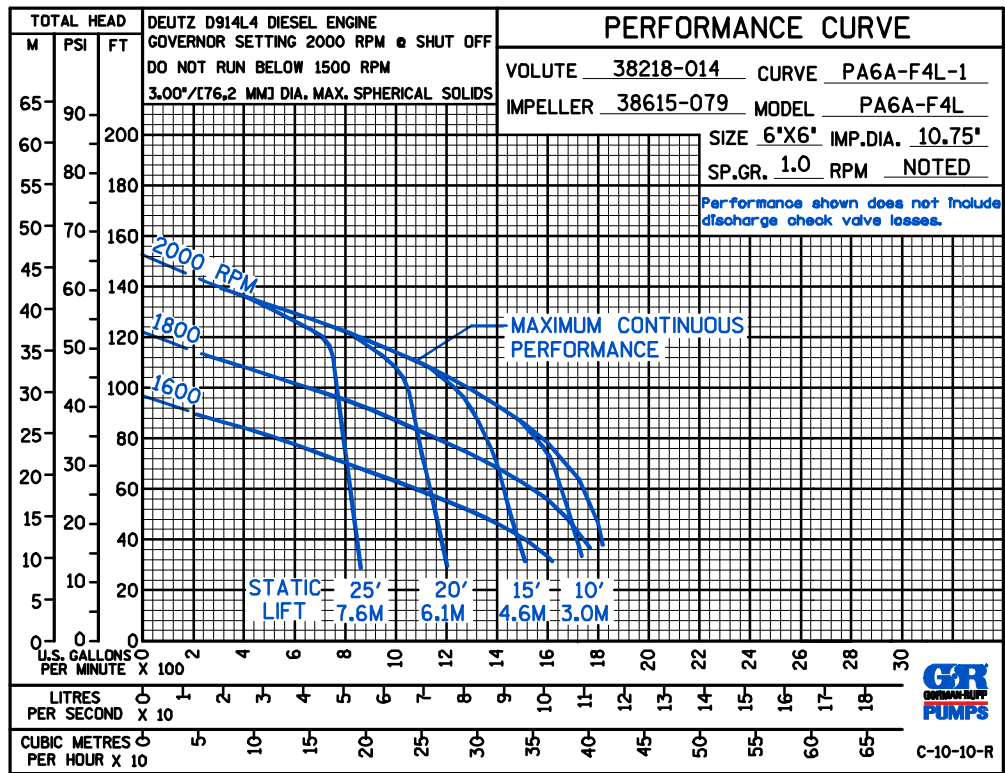
SECTION 42, PAGE 700

APPROXIMATE DIMENSIONS and WEIGHTS

|                           |  |  |
|---------------------------|--|--|
| <b>NET WEIGHT:</b>        | <b>SKID BASE</b><br>2662 LBS. (1207 KG.) | <b>2-WHEEL</b><br>3176 LBS. (1441 KG.) |
| <b>SHIPPING WEIGHT:</b>   | 2890 LBS. (1311 KG.)                     | 3176 LBS. (1441 KG.)                   |
| <b>EXPORT CRATE SIZE:</b> | 175 CU. FT. (5 CU. M.)                   | 377 CU. FT. (10,7 CU. M.)              |



DIMENSIONS:  
INCHES  
[MILLIMETERS]



## GORMAN-RUPP PUMPS

www.grpumps.com

Specifications Subject to Change Without Notice

Printed in U.S.A.