

ACDEU **Priming Assisted Centrifugal Pump**

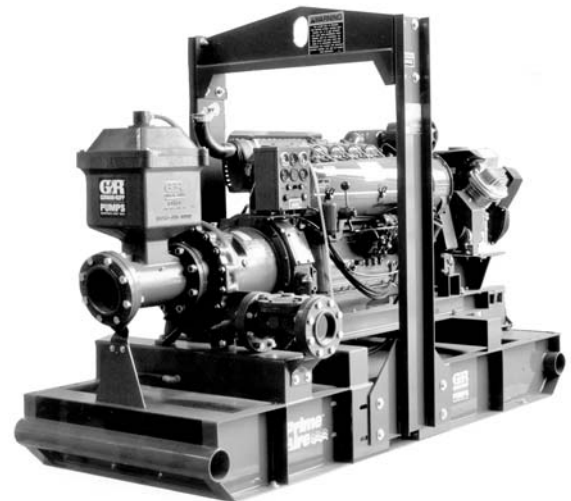


Diesel Engine Driven

Models PA4B60-F6L and PA4B60-F6L-A

Size 6" x 4"

Total Head		Capacity of Pump in U.S. Gallons per Minute (GPM) at Continuous Performance			
P.S.I.	Feet				
176.0	406	190	190	190	190
173.4	400	275	275	275	275
156.1	360	378	518	518	518
138.7	320	386	540	658	658
121.4	280	395	560	670	755
104.0	240	405	566	684	780
86.7	200	410	570	698	790
69.4	160	415	580	710	800
52.0	120	420	585	720	810
34.7	80	425	590	725	820
Suction Lift		25'	20'	15'	10'



PA4B60-F6L SHOWN



Do not use in explosive atmosphere or for pumping volatile flammable liquids.

ENGINE SPECIFICATIONS

Model: Deutz F6L 912D.
Type: Six Cylinder, Four Cycle, Air Cooled Diesel Engine.
Displacement: 345 Cu. In. (5,7 liter).
Governor: Mechanical.
Lubrication: Forced Circulation.
Air Cleaner: Oil Bath with Precleaner.
Oil Reservoir: 14.8 U.S. Qts. (14 liter) Dry.
 12.7 U.S. Qts. (12 liter) Refill.
Fuel Tank: 100 U.S. Gals. (378 liter).
Full Load Operating Time: 19.7 Hrs.
Starter: 12V Electric.

Standard Features: Low Oil Pressure and V-Belt Failure Safety Shut Down Switches. Instrument Panel with: Temperature Gauge, Oil Pressure Gauge, Ammeter, Hourmeter, Tachometer, Alternator Failure Light, and Start Key Switch. Exhaust Muffler w/Guard and Weather Cap. Throttle Control.

DEUTZ PUBLISHED PERFORMANCE:
 Maximum Continuous BHP 98 (73 kW) @ 2500 RPM

PUMP SPECIFICATIONS

Size: 6" x 4" NPT (152 mm x 102 mm) - Female.
Suction Head: Gray Iron No. 30.
Casing: Gray Iron No. 40. Maximum Operating Pressure 267 psi (18,7 kg/cm²).*
Enclosed Type, Six Vane Impeller: Gray Iron No. 30. Handles 13/32" (10,3 mm) Diameter Spherical Solids.
Impeller Shaft: Stainless Steel No. 17-4 PH.
Replaceable Wear Rings: Bronze No. C83600.
Intermediate Bracket: Gray Iron No. 30.
Seal: Mechanical, Oil-Lubricated, Double Floating, Self-Aligning. Silicon Carbide Rotating and Stationary Faces. Stainless Steel No. 316 Cage, Spring and Stationary Seat. Fluorocarbon Elastomers (DuPont Viton® or Equivalent). Maximum Temperature of Liquid Pumped 160°F (71°C).*
 *Consult Factory for Applications Exceeding Maximum Pressure and/or Temperature Indicated.
Shaft Sleeve: Stainless Steel 17-4 PH.
Priming Chamber: Gray Iron No. 30.
Discharge Check Valve: Gray Iron No. 30 Housing. Buna-N Flapper.
Bearing: Open Double Ball.
Bearing Lubrication: Grease.
Flanges: Gray Iron No. 30.
Gaskets: Vegetable Fiber.
O-Rings: Buna-N.
Hardware: Standard Plated Steel.
Seal Cavity Oil Level Sight Gauge.
PA4B60-F6L-A ONLY: Liquid Level Controls: Submersible Transducer* and Electronic Pressure Switch (EPS) Control with Start/Stop Set Point Adjustments for Automatic Filling/Emptying.
 *50 Ft. (15 m) Standard Length; 150 Ft. (46 m) Maximum; Specify Length at Time of Order.
Standard Equipment: Belt-Driven Air Compressor. Hoisting Bail. Strainer. Skid Base.
Optional Equipment: Battery. Two Wheel Truck Assembly with P225/75R15 Pneumatic Tires. Over-the-Road Trailer (Meets D.O.T. and Transport Canada Requirements).



THE GORMAN-RUPP COMPANY • MANSFIELD, OHIO

www.grpumps.com

GORMAN-RUPP OF CANADA LIMITED • ST. THOMAS, ONTARIO, CANADA

Specifications Subject to Change Without Notice

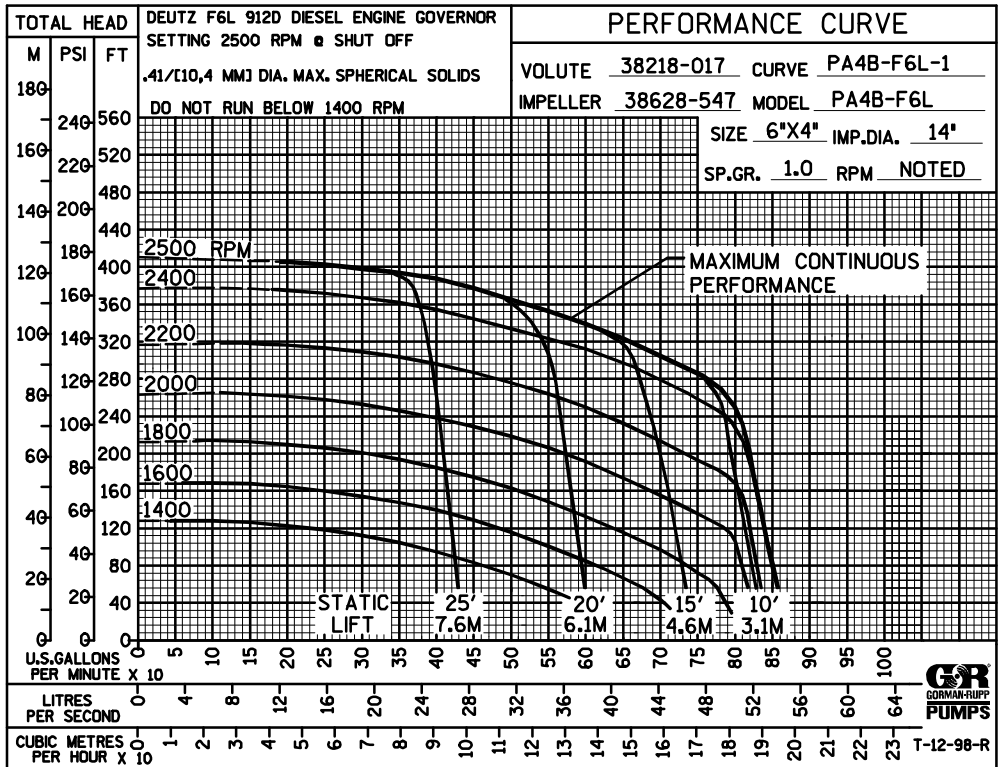
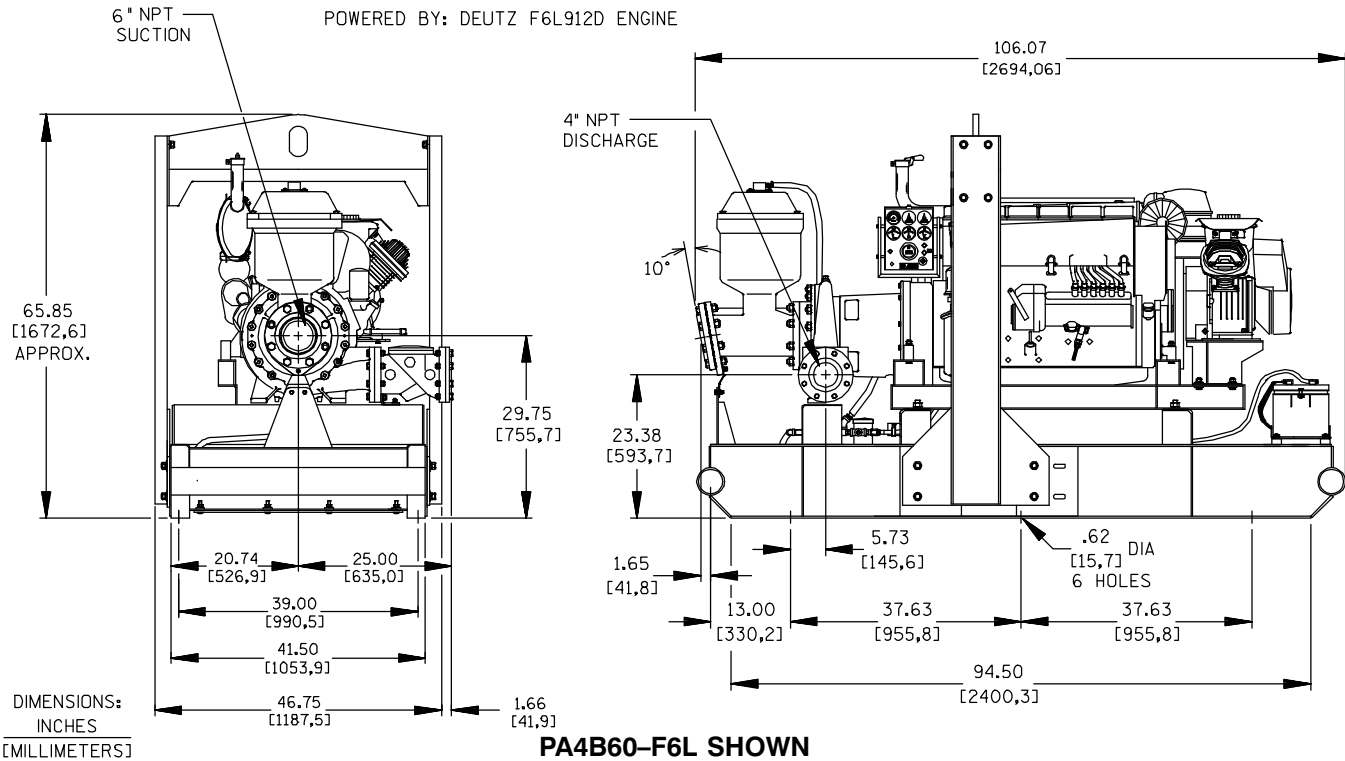
Printed in U.S.A.

Specification Data

APPROXIMATE DIMENSIONS and WEIGHTS

	SKID BASE	2-WHEEL
NET WEIGHT:	3620 LBS. (1642 KG.)	3870 LBS. (1755 KG.)
SHIPPING WEIGHT:	3710 LBS. (1683 KG.)	3870 LBS. (1755 KG.)
EXPORT CRATE SIZE:	196 CU. FT. (5,5 CU. M.)	456 CU. FT. (12,9 CU. M.)

SECTION 42, PAGE 500



THE GORMAN-RUPP COMPANY • MANSFIELD, OHIO

GORMAN-RUPP OF CANADA LIMITED • ST. THOMAS, ONTARIO, CANADA

Specifications Subject to Change Without Notice

Printed in U.S.A.