



# Priming Assisted Centrifugal Pump w/Autostart

## Model PA4B60-4045H FT4

### Size 6" x 4"



Total Head		Capacity of Pump in U.S. Gallons per Minute (GPM) at Continuous Performance			
P.S.I.	Feet				
159.5	368	190	190	190	190
151.7	350	340	340	340	340
130.0	300	430	550	550	550
108.4	250	435	585	688	710
86.7	200	440	595	705	810
65.0	150	450	600	720	840
43.4	100	460	607	730	850
21.7	50	465	615	740	860
<b>Suction Lift</b>		<b>25'</b>	<b>20'</b>	<b>15'</b>	<b>10'</b>



#### PUMP SPECIFICATIONS

**Size:** 6" x 4" (152 mm x 102 mm) Flanged.

**Suction Head:** Gray Iron 30.

**Casing:** Gray Iron 40.

**Maximum Operating Pressure** 239 psi (1648 kPa).\*

**Enclosed Type, Six Vane Impeller:** Gray Iron 30.

Handles 13/32" (10,4 mm) Diameter Spherical Solids.

**Impeller Shaft:** Stainless Steel 17-4 PH.

**Replaceable Wear Ring:** Copper Alloy C83600.

**Replaceable Balance Ring:** Copper Alloy C83600.

**Intermediate Bracket:** Gray Iron 30.

**Bearing Retainer:** Gray Iron 30.

**Seal:** Mechanical, Oil-Lubricated, Double Floating, Self-Aligning. Silicon Carbide Rotating and Stationary Faces. Stainless Steel 316 Cage, Spring and Stationary Seat. Fluorocarbon Elastomers (DuPont Viton® or Equivalent). Maximum Temperature of Liquid Pumped 160°F (71°C).\*

**Shaft Sleeve:** Stainless Steel 17-4 PH.

**Priming Chamber:** Gray Iron 30 Housing w/Stainless Steel Float and Linkage.

**Discharge Check Valve:** Ductile Iron Housing with Welded Nickel Seat and Buna-N Flapper.

**Bearing:** Open Double Row Ball.

**Bearing Lubrication:** Grease.

**Gaskets:** Vegetable Fiber w/Cork and Resistant Synthetic Rubber.

**O-Rings:** Buna-N.

**Hardware:** Standard Plated Steel.

**Seal Oil Reservoir Sight Gauge.**

*\*Consult Factory for Applications Exceeding Maximum Pressure and/or Temperature Indicated.*

**Standard Equipment:** Hoisting Bail. Combination Skid Base w/Fuel Tank. [Single Ball Type Float Switch](#). [Full Feature Control Panel](#)\*\*

**Optional Equipment:** Battery. Heated Priming Chamber Kit. Skid-Drag Base Kit. Suction and Discharge NPT Threaded Flange Kits. High Speed (55 MPH/89 KM/H) Tandem Axle Pneumatic-Tired Wheel Kit w/wo DOT-Approved Lights and Electric Brakes. [Tandem Axle Over-the-Road Trailer](#). Transducer Liquid Level Sensor. \*\*

*\*\*50 Ft. (15 m) Standard Length; Dual Switches and Alternate Cable Lengths Available From the Factory.*



#### ENGINE SPECIFICATIONS

**Model:** John Deere 4045HFC04

**EPA Tier:** Final Tier 4.

**Type:** Four Cylinder, Turbocharged, Diesel Engine w/ Air Compressor.

**Displacement:** 276 Cu. In. (4,5 liters).

**Governor:** Electronic Isochronous.

**Lubrication:** Forced Circulation.

**Air Cleaner:** Dry Type.

**Oil Reservoir:** 16.7 U.S. Qts. (15,8 liters) Dry; 14.7 U.S. Qts. (13,9 liters) Refill.

**Fuel Tank:** 110 U.S. Gals. (416 liters).

**Full Load Operating Time:** 23.1 Hrs.

**Starter:** 12V Electric.

**Standard Features:** Muffler w/Guard and Weather Cap, DOC, DPF & SCR Exhaust After-Treatment System.

**Engine Control Features:** Padlockable Box with Throttle Control, Tachometer, Coolant Temperature, Oil Pressure, Voltage and Overstart Indicators/Shutdowns. Manual/Stop/Auto Keyswitch. Audible Startup Warning Delay. Fuel Level Display/Alarm/Shutdown. Electronic Fuel Level Sensor.

**JOHN DEERE PUBLISHED PERFORMANCE:**  
Maximum Gross BHP (Continuous)  
125 (93 kW) @ 2200 RPM



## GORMAN-RUPP PUMPS

www.grpumps.com

Specifications Subject to Change Without Notice

Printed in U.S.A.

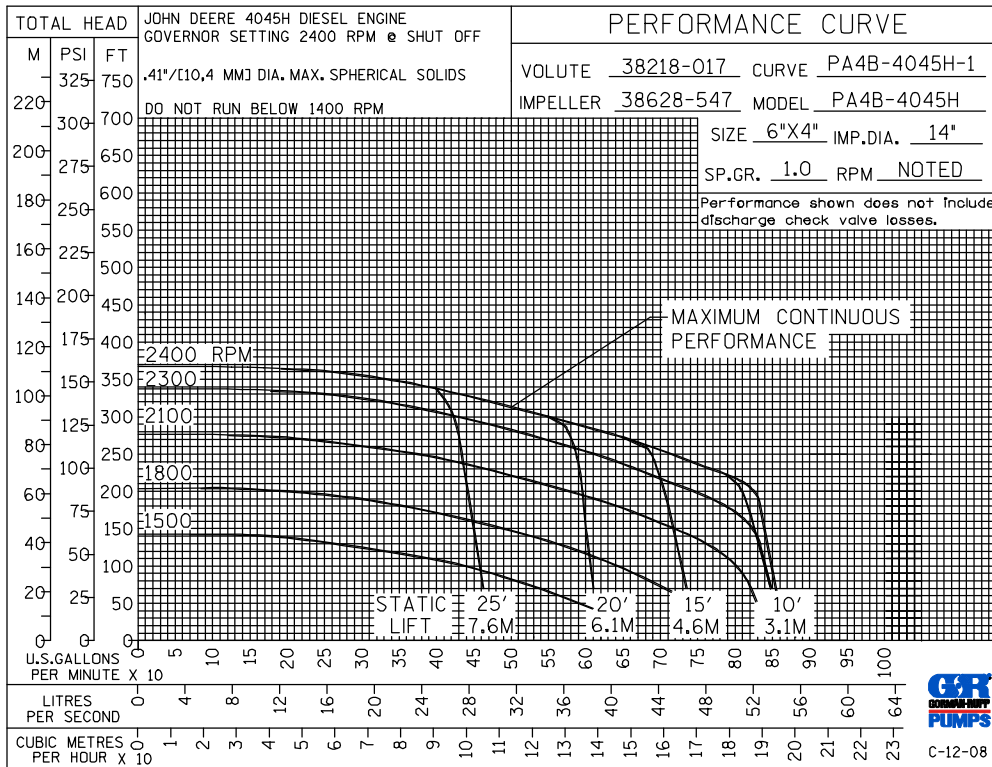
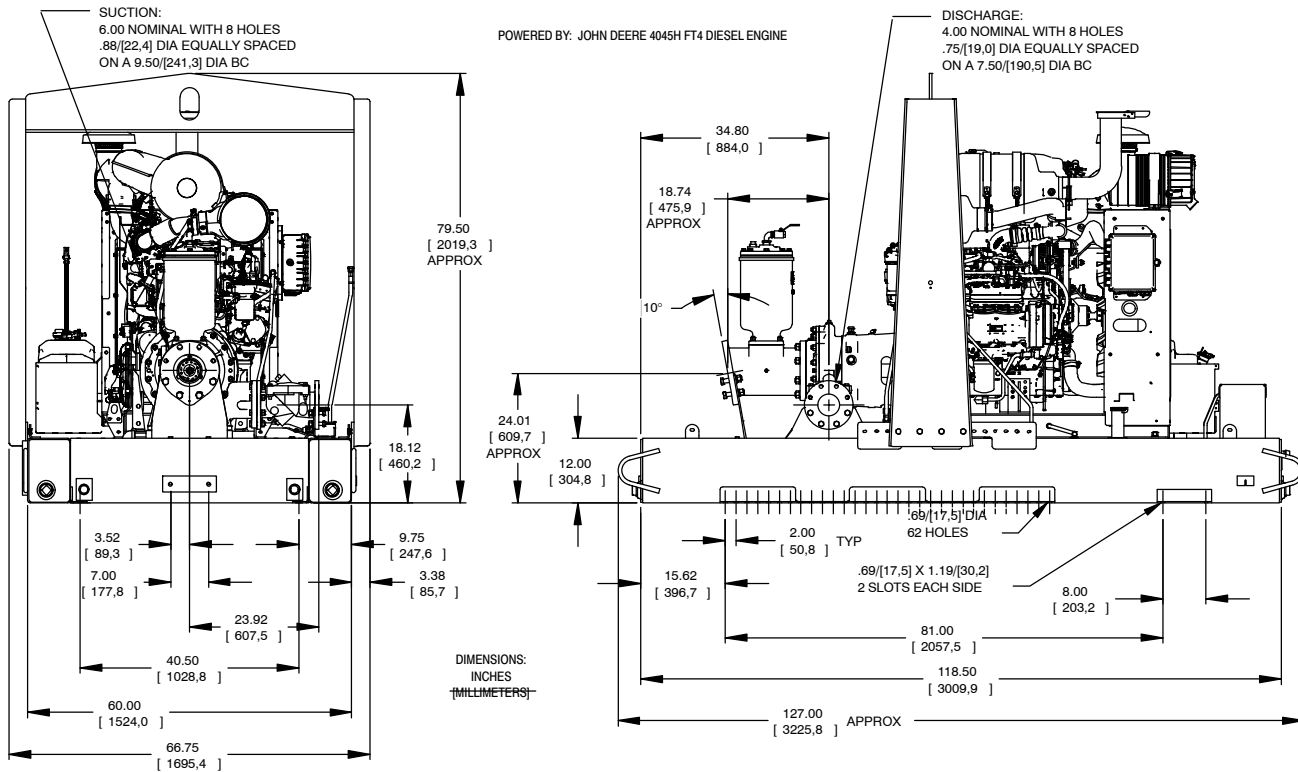
**Specification Data**

**SECTION 42, PAGE 406**

APPROXIMATE  
DIMENSIONS and WEIGHTS

**NET WEIGHT:**  
**SHIPPING WEIGHT:**  
**EXPORT CRATE SIZE:**

**4575 LBS. (2075,2 KGS.)**  
**4700 LBS. (2131,9 KGS.)**  
**447 CU. FT. (12,7 CU. M.)**



**GORMAN-RUPP PUMPS**

www.grpumps.com

Specifications Subject to Change Without Notice

Printed in U.S.A.