

ACDEU

Priming Assisted Centrifugal Pump

Diesel Engine Driven



Models PA4B60-4045T and PA4B60-4045T-A

Size 6" x 4"

Total Head		Capacity of Pump in U.S. Gallons per Minute (GPM) at Continuous Performance			
P.S.I.	Feet				
172.5	398	190	190	190	190
151.7	350	412	460	460	460
130.1	300	432	580	640	640
108.4	250	440	592	700	770
86.7	200	450	600	712	830
65.0	150	458	605	725	840
43.4	100	465	610	735	845
Suction Lift		25'	20'	15'	10'

PUMP SPECIFICATIONS

Size: 6" x 4" NPT (152 mm x 102 mm) - Female.**Suction Head:** Gray Iron No. 30.**Casing:** Gray Iron No. 40. Maximum Operating Pressure 259 psi (18,2 kg/cm²).***Enclosed Type, Six Vane Impeller:** Gray Iron No. 30. Handles 13/32" (10,3 mm) Diameter Spherical Solids.**Impeller Shaft:** Stainless Steel No. 17-4 PH.**Replaceable Wear Rings:** Bronze No. C83600.**Intermediate Bracket:** Gray Iron No. 30.**Seal:** Mechanical, Oil-Lubricated, Double Floating, Self-Aligning. Silicon Carbide Rotating and Stationary Faces. Stainless Steel No. 316 Cage, Spring and Stationary Seat. Fluorocarbon Elastomers (DuPont Viton® or Equivalent). Maximum Temperature of Liquid Pumped 160°F (71°C).*

* Consult Factory for Applications Exceeding Maximum Pressure and/or Temperature Indicated.

Shaft Sleeve: Stainless Steel 17-4 PH.**Priming Chamber:** Gray Iron No. 30.**Discharge Check Valve:** Gray Iron No. 30 Housing. Buna-N Flapper.**Bearing:** Open Double Ball.**Bearing Lubrication:** Grease.**Flanges:** Gray Iron No. 30.**Gaskets:** Vegetable Fiber.**O-Rings:** Buna-N.**Hardware:** Standard Plated Steel.**Seal Cavity Oil Level Sight Gauge.****PA4B60-4045T-A ONLY:** Liquid Level Controls: Submersible Transducer* and Electronic Pressure Switch (EPS) Control with Start/Stop Set Point Adjustments for Automatic Filling/Emptying.

* 50 Ft. (15 m) Standard Length; 150 Ft. (46 m) Maximum; Specify Length at Time of Order.

Standard Equipment: Skid Base. Strainer. Gear-Driven Air Compressor. Hoisting Bail.**Optional Equipment:** Battery. Two Wheel Truck Assembly with P225/75R15 Pneumatic Tires. Over-the-Road Trailer (Meets D.O.T. and Transport Canada Requirements).

PA4B60-4045T SHOWN



WARNING!

Do not use in explosive atmosphere or for pumping volatile flammable liquids.

ENGINE SPECIFICATIONS

Model: John Deere 4045TF150 "Power Tech".**Type:** Four Cylinder, Four Cycle, Liquid Cooled, Turbocharged Diesel Engine.**Displacement:** 276 Cu. In. (4,5 liter).**Governor:** Mechanical.**Lubrication:** Forced Circulation.**Air Cleaner:** Dry Type with Precleaner.**Oil Reservoir:** 14 U.S. Qts. (13,3 liter) Dry; 13 U.S. Qts. (12,3 liter) Refill.**Fuel Tank:** 100 U.S. Gals. (378 liter).**Full Load Operating Time:** 19.7 Hrs.**Starter:** 12V Electric.**Standard Features:** Low Oil Pressure and High Coolant Temperature Safety Shut Down Switches. Instrument Panel Includes: Tach-Hourmeter, Coolant Temperature Gauge, Oil Pressure Gauge, Vernier Throttle Control, On/Off Key Switch, and Ammeter. Exhaust Muffler.**JOHN DEERE PUBLISHED PERFORMANCE:** Maximum Continuous BHP 103 (77 kW) @ 2500 RPM

THE GORMAN-RUPP COMPANY • MANSFIELD, OHIO

GORMAN-RUPP OF CANADA LIMITED • ST. THOMAS, ONTARIO, CANADA

Specifications Subject to Change Without Notice

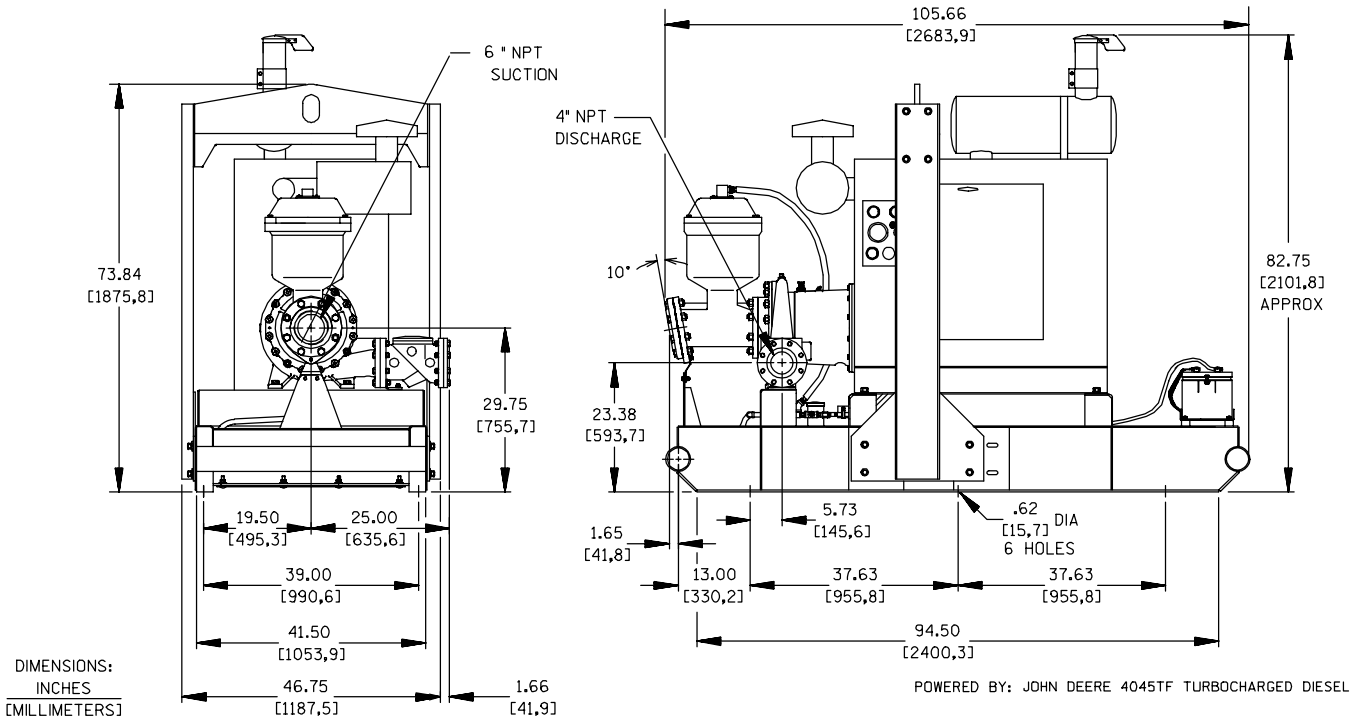
Printed in U.S.A.

Specification Data

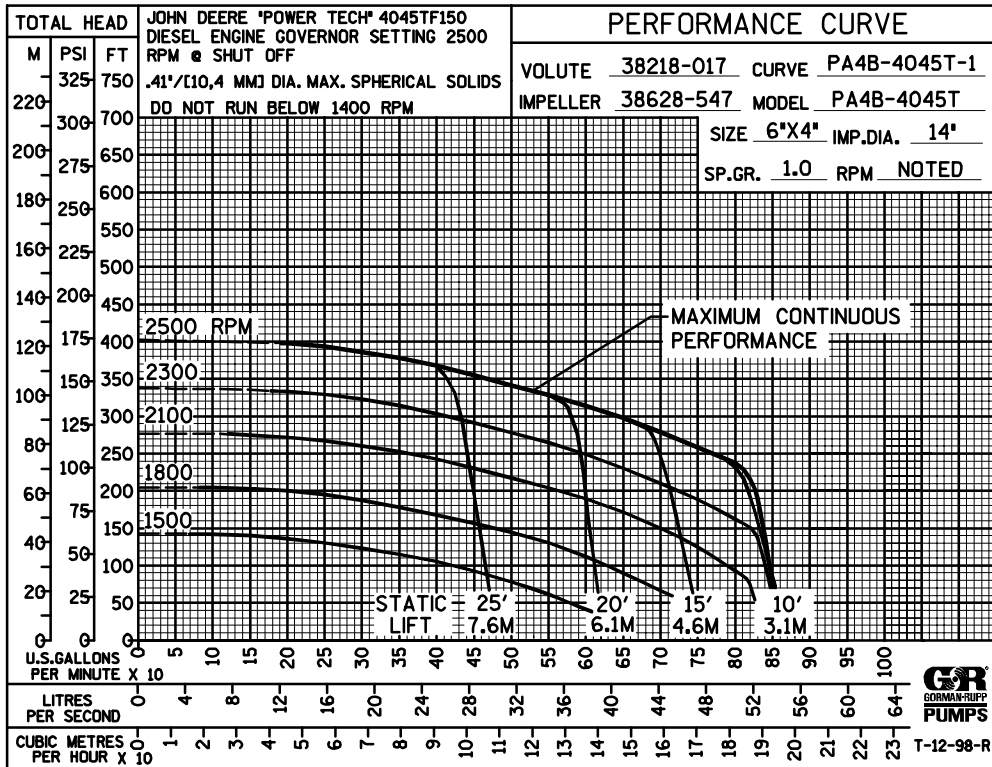
APPROXIMATE DIMENSIONS and WEIGHTS

	SKID BASE	2-WHEEL
NET WEIGHT:	3810 LBS. (1728 KG.)	4040 LBS. (1833 KG.)
SHIPPING WEIGHT:	3900 LBS. (1769 KG.)	4040 LBS. (1833 KG.)
EXPORT CRATE SIZE:	245 CU. FT. (6,9 CU. M.)	505 CU. FT. (14,3 CU. M.)

SECTION 42, PAGE 400



PA4B60-4045T SHOWN



THE GORMAN-RUPP COMPANY • MANSFIELD, OHIO

GORMAN-RUPP OF CANADA LIMITED • ST. THOMAS, ONTARIO, CANADA

Specifications Subject to Change Without Notice

Printed in U.S.A.