

A C D E U



Diesel Engine Driven Priming Assisted Centrifugal Pump w/Autostart Model PA4C60-4045T Size 6" x 4"



Total Head		Capacity of Pump in U.S. Gallons per Minute (GPM) at Continuous Performance			
P.S.I.	Feet				
128.3	296	350	350	350	350
121.4	280	630	720	720	720
104.0	240	690	975	1110	1200
86.7	200	700	980	1120	1220
69.4	160	700	980	1120	1220
52.0	120	700	980	1120	1220
34.7	80	700	980	1120	1220
17.3	40	700	980	1120	1220
Suction Lift		25'	20'	15'	10'

PUMP SPECIFICATIONS

Size: 6" x 4" (152 mm x 102 mm) Flanged.
Casing: Gray Iron No. 30.
 Maximum Operating Pressure 217 psi (1496 kPa).*
Enclosed Type, Two Vane Impeller: Gray Iron No. 30.
 Handles 3" (76,2 mm) Diameter Spherical Solids.
Impeller Shaft: Stress-Proof Stainless Steel.
Replaceable Wear Ring: Gray Iron No. 30.
Back Plate: Gray Iron No. 30.
Bearing Frame: Gray Iron No. 30.
Seal: Mechanical Type w/Run-Dry Oil-Lubrication System. Silicon Carbide Rotating Face. Tungsten Titanium Carbide Stationary Face. Fluorocarbon Elastomers (DuPont Viton® or Equivalent). Stainless Steel No. 18-8 Cage and Spring. Maximum Temperature of Liquid Pumped 160°F (71°C).*
Shaft Sleeve: Chrome Plated Stainless Steel No. 416.
Priming Chamber: Gray Iron No. 30.
Discharge Check Valve: 125# Ductile Iron Housing w/Buna-N Flapper.
Radial Bearing: Open Single Row Ball.
Thrust Bearings: Two Open Single Row Ball.
Bearing Lubrication: Grease.
Flanges: Gray Iron No. 30.
Gaskets: Vegetable Fiber w/Cork and Resistant Synthetic Rubber.
O-Rings: Buna-N.
Hardware: Standard Plated Steel.
Seal Oil Reservoir Sight Gauge.

**Consult Factory for Applications Exceeding Maximum Pressure and/or Temperature Indicated.*

Standard Equipment: Gear-Driven Air Compressor. Hoisting Bail. Combination Skid Base w/Fuel Tank. Strainer. Single Ball Type Float Switch.**

Optional Equipment: Battery. High Speed (55 MPH/89 KM/H) Wheel Kit with ST225/75R15 Pneumatic Tires. Over-the-Road Trailer (Meets D.O.T. and Transport Canada Requirements) Available w/Either Electric or Hydraulic Surge Brakes, Running Lights, Two Trailer Jack Stands and Safety Chains. EPS w/Submersible Transducer Liquid Level Sensor.**

***50 Ft. (15 m) Standard Length; Dual Switches and Alternate Cable Lengths Available From the Factory.*



WARNING!

Do not use in explosive atmosphere or for pumping volatile flammable liquids.

ENGINE SPECIFICATIONS

Model: John Deere 4045T "Power Tech".
Type: Four Cylinder, Four Cycle, Turbocharged, Liquid Cooled Diesel Engine.
Displacement: 276 Cu. In. (4,5 liters).
Governor: Mechanical.
Lubrication: Forced Circulation.
Air Cleaner: Dry Type.
Oil Reservoir: 9 U.S. Qts. (8,5 liters) Dry; 8 U.S. Qts. (7,6 liters) Refill.
Fuel Tank: 88 U.S. Gals. (330 liters).
Full Load Operating Time: 17.9 Hrs.
Starter: 12V Electric.
Standard Features: Low Oil Pressure and High Coolant Temperature Safety Shut Down Switches. Autostart Instrument Panel Includes: Tachometer, Voltmeter, Hourmeter, Coolant Temperature Gauge, Oil Pressure Gauge, Manual/Stop/Auto Key Switch, 10 Amp Pushbutton Circuit Breaker, Startup Warning Delay, Muffler w/Guard and Weather Cap. Throttle Control.

JOHN DEERE PUBLISHED PERFORMANCE:
 Maximum Continuous BHP 103 (77 kW) @ 2500 RPM



THE GORMAN-RUPP COMPANY • MANSFIELD, OHIO

GORMAN-RUPP OF CANADA LIMITED • ST. THOMAS, ONTARIO, CANADA

www.grpumps.com

Specifications Subject to Change Without Notice

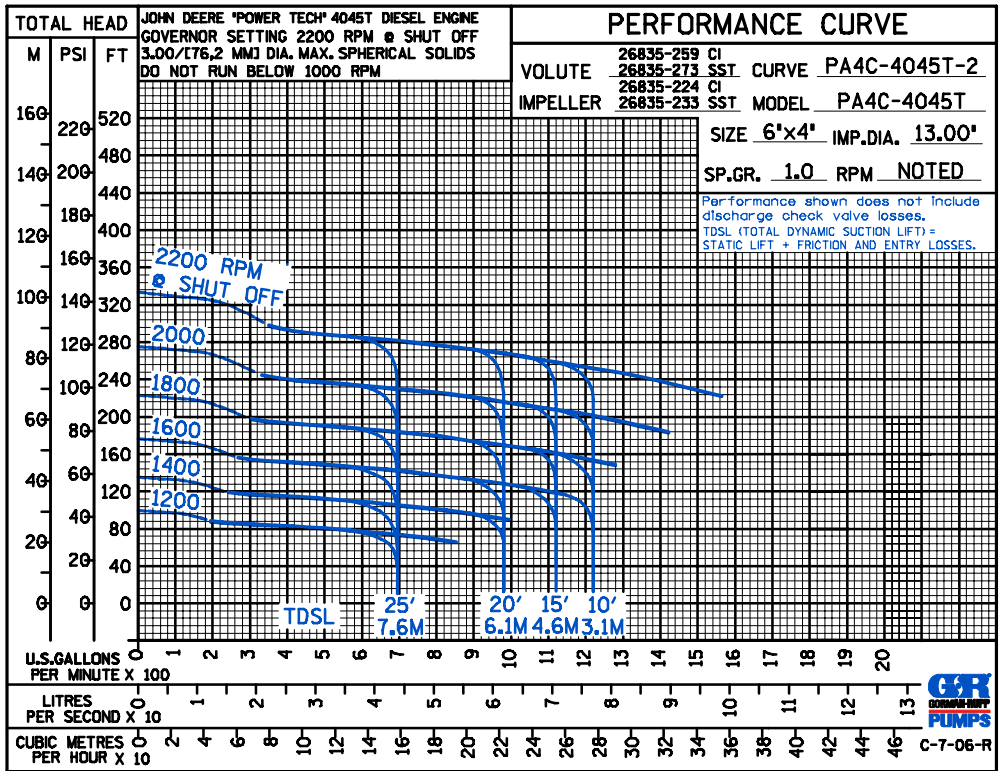
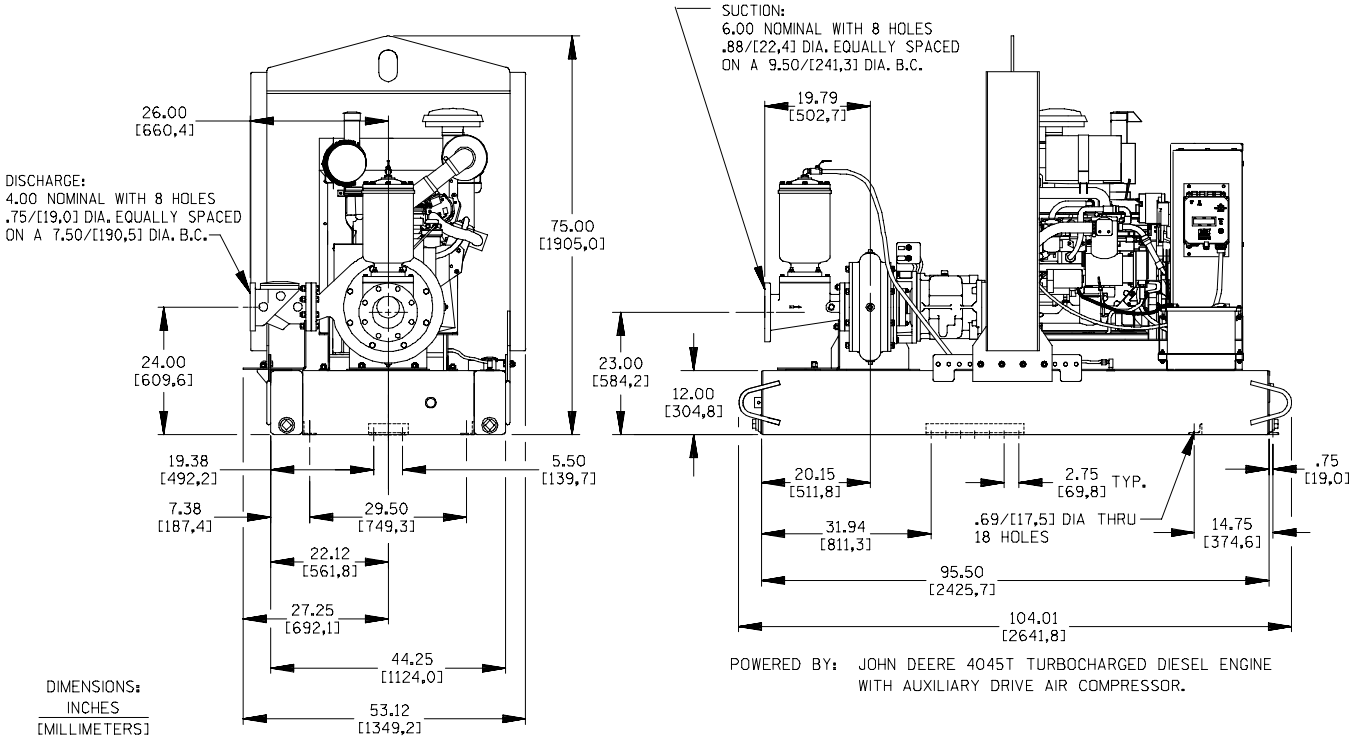
Printed in U.S.A.

Specification Data

SECTION 42, PAGE 380

APPROXIMATE DIMENSIONS and WEIGHTS

	SKID BASE	2-WHEEL
NET WEIGHT:	3690 LBS. (1674 KG.)	4185 LBS. (1898 KG.)
SHIPPING WEIGHT:	3840 LBS. (1742 KG.)	4185 LBS. (1898 KG.)
EXPORT CRATE SIZE:	305 CU. FT. (8,6 CU. M.)	



THE GORMAN-RUPP COMPANY • MANSFIELD, OHIO

GORMAN-RUPP OF CANADA LIMITED • ST. THOMAS, ONTARIO, CANADA

Specifications Subject to Change Without Notice

Printed in U.S.A.